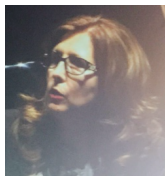


Alessandra Lugaresi, MD, PhD: Curriculum vitae et studiorum



PERSONAL DATA

Born in Bologna, Italy, August 1st, 1960.

EDUCATIONAL AND PROFESSIONAL TRAINING, ACADEMIC ACHIEVEMENTS

1985/07/16: Graduated in Medicine and Surgery, University of Bologna, final mark 110/110, magna cum laude

1989: Post-graduate specialization in Neurology, University of Bologna, final mark 70/70, magna cum laude

1995/10/20: PhD in Neuroscience, University of Ancona

ACADEMIC APPOINTMENTS

1992/04/01- 2000/03/31: Assistant Professor in Neurology, Univ. "G. d'Annunzio", Chieti

2000/04/01-2016/03/31: Associate Professor in Neurology, Univ. "G. d'Annunzio", Chieti

2016/04/01- present: Associate Professor in Neurology, University of Bologna, Bologna

Director MS Center in Chieti from April 1st 1996 to March 31st, 2016.

Director UOSI Riabilitazione Sclerosi Multipla, April 1st, 2016 to present.

FELLOWSHIPS, AWARDS/PRIZES AND GRANTS

1987: Award Associazione per le Ricerche Neurologiche (ARIN) for publication #5

1989: International fellowship from Italian Ministry of education

1989/09/01- 1991/12/31: "Post-Doctoral Fellow" of Muscular Dystrophy Association at Columbia University of New York

1992-1994: Telethon Italy grant (1992-1994).

MEMBERSHIPS

Società Italiana di Neurologia (SIN)

International Society of Neuroimmunology (ISNI)

European Neurological Society (ENS)

MAJOR SCIENTIFIC ACHIEVEMENTS

Prof. Lugaresi's main research activities focus on Multiple Sclerosis (MS), including prognostic indicators and identification best practices. Collecting combined clinical, neuroradiological and biological observations she contributed to the elucidation of factors leading to progression and disability accrual. She also contributed to identify novel adverse events linked to MS treatment.

RESEARCH PRODUCTION AND IMPACT

Prof. Lugaresi's research activity has led to more than 220 scientific papers (22 first Author, 14 senior author) published in international peer-reviewed journals (202 articles, 7 reviews, 7 letters, 4 conference papers, 3 erratum and 1 note) and more than 300 abstracts (> 200 from International Meetings and published on international journals).

H-index = 54; **citations**: 9392 (5444 pre-209, 3948 dal 2020)

Identification codes: Scopus, 7007004836896 ; **ResearcherID**, C-7743-2012; **ORCID**, 0000-0003-2902-5589.

RESEARCH PRODUCTION IN THE LAST 5 YEARS

Total no. of peer-reviewed full paper publications (2019-to date): 68 (Scopus)

EDITORIAL RESPONSIBILITIES

- BMC Neurology (Invited associate editor): 2016-present
- Frontiers in Neurology – Multiple Sclerosis and Neuroimmunology (Invited Review Editor) 2021-present
- Frontiers in Neurology - Autoimmune and Autoinflammatory Disorders (Invited Review Editor) 2021-present
- Frontiers in Neurology - Multiple Sclerosis and Neuroimmunology (Guest Associate Editor)
- Frontiers in Immunology - Multiple Sclerosis and Neuroimmunology (Guest Associate Editor)
- Frontiers in Neurology (Invited Research topic Editor) 2022-present

REFEREE FOR:

- Wellcome Trust Foundation.
- Ministero della Salute (ECM reprise program)
- Italian Multiple Sclerosis Foundation (FISM)

REVIEWER FOR SCIENTIFIC JOURNALS:

- BMC Health Services Research (2018)
- BMC Neurology (2015; 2017; 2018, 2; 2020, 2)
- Clinical neurology and neurosurgery (2016, 2)
- CNS Drugs (2016)
- European Journal of Neurology (2005; 2019; 2021)
- Expert Opinion on Biological Therapy (2013; 2015)
- Expert Opinion on Drug Delivery (2014, 2)
- Expert Opinion on Investigational Drugs (2020)
- Expert Opinion on Pharmacotherapy (2020)
- Expert Opinion of Clinical Pharmacology (2013)
- Expert Review of Neurotherapeutics (2014; 2015)
- Health Expectations (2014)
- Journal of Clinical Pharmacy and Therapeutics (2016, 2)
- Journal of Neurology, Neurosurgery and Psychiatry (2023)
- Medical Devices: Evidence and research (2014)
- Multiple Sclerosis and Demyelinating Disorders (2019)
- Multiple Sclerosis Journal - Experimental, Translational and Clinical (2020; 2022, 2)
- Neuroimmunology reports (2021)
- Multiple Sclerosis and Related Disorders (2019, 2)
- Neurodegenerative Disease Management (2020)
- Neurological Sciences (2018; 2021, 2; 2022, 2)
- Neuropsychiatric Disease and Treatment (2018)
- Patient Preference and Adherence (2016, 2; 2017)
- PLOS One (2014, 2; 2018, 2)
- SpringerPlus (2016)
- The patient: patient centered outcomes research (2015, 2)
- Therapeutic Advances in Chronic Disease (2021, 2)

LECTURES AND CONFERENCES

She has presented more than 100 invited lectures and chaired more than 50 sessions at local, national or international meetings.

TEACHING ACTIVITIES

❖ University "G. d'Annunzio"

- Medicine: Neuroimmunological and paraneoplastic diseases (2014-15)

- Dental School: Neurology (2004-2016)
- Nursing: Neurology (2001-2016)
- Residencies in Internal Medicine and Specialistic branches: Neurology and emergencies in neurology
- Master in Emergency: Neurological acute diseases
- Master in pain Medicine: pain in neurological disorders (Multiple Sclerosis, Parkinson's disease, ...)

❖ University Alma Mater Studiorum, Bologna

- Medicina: 37317 (sede Bologna)- MALATTIE DEL SISTEMA NERVOSO (C.I.) - 03668 - NEUROLOGIA (AK-D) – 1 CFU
- Medicina (Campus Ravenna) - 03668 - NEUROLOGIA - a.a. 2023/2024
- Tecniche di neurofisiopatologia: 39447 - INDAGINI ELETTROFISIOLOGICHE SPECIALI, NEURORIABILITAZIONE E ULTRASONOLOGIA (C.I.) - 39448 - NEUROLOGIA 2 – 1 CFU
- Tecniche Ortopediche: 39476 - SCIENZE NEUROLOGICHE E RIABILITAZIONE (C.I.) - 03668 - NEUROLOGIA – 2 CFU
- Nursing (Campus Rimini): 39560 - SCIENZE CLINICHE DELL'AREA MEDICO-SPECIALISTICA (C.I.) - 30908 - NEUROLOGIA – 1 CFU
- Scuola di Specializzazione in Neurologia: 80396 - DAL CASO CLINICO AL PERCORSO DIAGNOSTICO TERAPEUTICO 2, 80400 - NEUROLOGIA II - DIDATTICA FRONTALE (C.I.) - PERCORSI DIAGNOSTICO TERAPEUTICI 1, 80480 – NEUROLOGIA 3-C

SCIENTIFIC ACTIVITY

Institute of Biochemistry (1980-1983).

Neurological Institute, Univ. Bologna (1984-1988).

Neuromuscular research Lab. - Columbia University - New York (14/3/1987-30/4/1987).

Institute of Neurology and Behavioral Sciences – Univ. Chieti (1988-1989; 1991-1996)

Neuroimmunology Lab. - Columbia University (1/9/1989-31/12/1991).

Neurological institute, Dept. Oncology & Neuroscience – Univ. Chieti (1997-2010)

MS Center, Dept Neuroscience & Imaging (2010-to March 31st, 2016).

Department of Biomedical and Neuromotor Sciences (DIBINEM) of the University “Alma Mater Studiorum” of Bologna, April 1st to present.

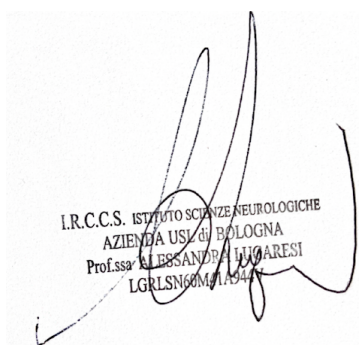
FOREIGN LANGUAGES

Speaks fluently English and French.

ADDITIONAL INFORMATION

Experienced in randomized, blinded clinical trials conducted according to GCP.

I authorize the use of my personal data in accordance with Decree 196 of June 30, 2003 and UE GDPR 2016/679



I.R.C.C.S. ISTITUTO SCIENZE NEUROLOGICHE
AZIENDA USL di BOLOGNA
Prof.ssa ALESSANDRA LUGARESÌ
LGRLSN60M1A947

Bologna, July 15, 2023

Prof. Alessandra Lugaresi

SELECTED REFERENCES (20)

1. Lizak N, Malpas CB, Sharmin S, Havrdova EK, Horakova D, Izquierdo G, Eichau S, **Lugaresi A**, Duquette P, Girard M, Prat A, Larochelle C, Trojano M, Grand'Maison F, Grammond P, Sola P, Ferraro D, Hupperts R, Bergamaschi R, Boz C, Van Pesch V, Spitaleri D, Terzi M, Kalincik T; MSBase Study Group. **Association of Sustained Immunotherapy With Disability Outcomes in Patients With Active Secondary Progressive Multiple Sclerosis**. *JAMA Neurol*. 2020 Jul 27;77(11):1-11. doi: 10.1001/jamaneurol.2020.2453. Online ahead of print.PMID: 32716480
IF (2019): 13,61
2. Malpas CB, Manouchehrinia A, Sharmin S, Roos I, Horakova D, Havrdova EK, Trojano M, Izquierdo G, Eichau S, Bergamaschi R, Sola P, Ferraro D, **Lugaresi A**, Prat A, Girard M, Duquette P, Grammond P, Grand'Maison F, Ozakbas S, Van Pesch V, Granella F, Hupperts R, Pucci E, Boz C, Sidhom Y, Gouider R, Spitaleri D, Soysal A, Petersen T, Verheul F, Karabudak R, Turkoglu R, Ramo-Tello C, Terzi M, Cristiano E, Slee M, McCombe P, Macdonell R, Fragoso Y, Olascoaga J, Altintas A, Olsson T, Butzkueven H, Hillert J, Kalincik T. Early clinical markers of aggressive multiple sclerosis. *Brain*. 2020 May 1;143(5):1400-1413. doi: 10.1093/brain/awaa081.PMID: 32386427
IF (2019): 11.34
3. He A, Merkel B, Brown JWL, Zhovits Ryerson L, Kister I, Malpas CB, Sharmin S, Horakova D, Kubala Havrdova E, Spelman T, Izquierdo G, Eichau S, Trojano M, **Lugaresi A**, Hupperts R, Sola P, Ferraro D, Lycke J, Grand'Maison F, Prat A, Girard M, Duquette P, Larochelle C, Svenningsson A, Petersen T, Grammond P, Granella F, Van Pesch V, Bergamaschi R, McGuigan C, Coles A, Hillert J, Piehl F, Butzkueven H, Kalincik T; MSBase study group. Timing of high-efficacy therapy for multiple sclerosis: a retrospective observational cohort study. *Lancet Neurol*. 2020 Apr;19(4):307-316. doi: 10.1016/S1474-4422(20)30067-3. Epub 2020 Mar 18. PMID: 32199096
IF (2019): 30.04
4. Foschi M, **Lugaresi A**. Evaluating dalfampridine for the treatment of relapsing-remitting multiple sclerosis: does it add to the treatment armamentarium? *Expert Opin Pharmacother*. 2019 Aug;20(11):1309-1320. doi: 10.1080/14656566.2019.1623879. Epub 2019 Jun 25. PMID:31237780
IF = 3.04
5. Foschi M, Rizzo G, Liguori R, Avoni P, Mancinelli L, **Lugaresi A***, Ferini-Strambi L*. Sleep-related Disorders and their relationship with MRI findings in Multiple Sclerosis. *Sleep Medicine* doi: 10.1016/j.sleep.2019.01.010
* authors contributed equally
IF (2018) = 3.36
6. Brown JWL, Coles A, Horakova D, Havrdova E, Izquierdo G, Prat A, Girard M, Duquette P, Trojano M, **Lugaresi A**, Bergamaschi R, Grammond P, Alroughani R, Hupperts R, McCombe P, Van Pesch V, Sola P, Ferraro D, Grand'Maison F, Terzi M, Lechner-Scott J, Flechter S, Slee M, Shaygannejad V, Pucci E, Granella F, Jokubaitis V, Willis M, Rice C, Scolding N, Wilkins A, Pearson OR, Ziemssen T, Hutchinson M, Harding K, Jones J, McGuigan C, Butzkueven H, Kalincik T, Robertson N; MSBase Study Group. Association of Initial Disease-Modifying Therapy With Later Conversion to Secondary Progressive Multiple Sclerosis. *JAMA*. 2019 Jan 15;321(2):175-187. doi: 10.1001/jama.2018.20588.
IF = 45.5
7. Hughes J, Jokubaitis V, **Lugaresi A**, Hupperts R, Izquierdo G, Prat A, Girard M, Duquette P, Grand'Maison F, Grammond P, Sola P, Ferraro D, Ramo-Tello C, Trojano M, Slee M, Shaygannejad V, Boz C, Lechner-Scott J, Van Pesch V, Pucci E, Solaro C, Verheul F, Terzi M, Granella F, Spitaleri D, Alroughani R, Jun JK, Fambiatos A, Van der Walt A, Butzkueven H, Kalincik T; MSBase Study Group. Association of Inflammation and Disability Accrual in Patients With Progressive-Onset Multiple Sclerosis. *JAMA Neurol*. 2018 Nov 1;75(11):1407-1415. doi: 10.1001/jamaneurol.2018.2109. PMID:30083762
IF = 12.32
8. Vacchiano V, Frattaruolo N, Mancinelli L, Foschi M, Carotenuto A, Scandellari C, Piattelli M, Brescia Morra V, **Lugaresi A**. Teeth loss after teriflunomide treatment: Casual or causal? A short case series. *Mult Scler Relat Disord*. 2018 Aug; 24:120-122. doi: 10.1016/j.msard.2018.06.018. Epub 2018 Jun 30. PMID:29982109
IF = 2.73

9. Vacchiano V, Foschi M, Sabattini L, Scandellari C, **Lugaresi A**. Arthritic psoriasis during natalizumab treatment: a case report and review of the literature. *Neurol Sci*. 2017 Nov; 18:170-172. doi: 10.1016/j.msard.2017.09.029. Epub 2017 Sep 25. PMID:29141803
IF = 2.28
10. Mancinelli L, Amerio P, di Iorio M, Di Tommaso V, De Luca G, Onofri M, **Lugaresi A**. "Nail loss after teriflunomide treatment: A new potential adverse event". *Mult Scler Relat Disord*. 2017; 18:170-172. doi: 10.1016/j.msard.2017.09.029. Epub 2017 Sep 25. PMID:29141803
IF= 3.20
11. Lizak N, **Lugaresi A**, Alroughani R, Lechner-Scott J, Slee M, Havrdova E, Horakova D, Trojano M, Izquierdo G, Duquette P, Girard M, Prat A, Grammond P, Hupperts R, Grand'Maison F, Sola P, Pucci E, Bergamaschi R, Oreja-Guevara C, Van Pesch V, Ramo C, Spitaleri D, Iuliano G, Boz C, Granella F, Olascoaga J, Verheul F, Rozsa C, Cristiano E, Flechter S, Hodgkinson S, Amato MP, Deri N, Jokubaitis V, Spelman T, Butzkueven H, Kalincik T; MSBase Study Group. Highly active immunomodulatory therapy ameliorates accumulation of disability in moderately advanced and advanced multiple sclerosis. *J Neurol Neurosurg Psychiatry*. 2017 Mar;88(3):196-203. doi: 10.1136/jnnp-2016-313976. Epub 2016 Sep 28. PMID: 27683916
IF= 7.14
12. Kalincik T, Manouchehrinia A, Sobisek L, Jokubaitis V, Spelman T, Horakova D, Havrdova E, Trojano M, Izquierdo G, **Lugaresi A**, Girard M, Prat A, Duquette P, Grammond P, Sola P, Hupperts R, Grand'Maison F, Pucci E, Boz C, Alroughani R, Van Pesch V, Lechner-Scott J, Terzi M, Bergamaschi R, Iuliano G, Granella F, Spitaleri D, Shaygannejad V, Oreja-Guevara C, Slee M, Ampapa R, Verheul F, McCombe P, Olascoaga J, Amato MP, Vucic S, Hodgkinson S, Ramo-Tello C, Flechter S, Cristiano E, Rozsa C, Moore F, Luis Sanchez-Menoyo J, Laura Saladino M, Barnett M, Hillert J, Butzkueven H; MSBase Study Group. Towards personalized therapy for multiple sclerosis: prediction of individual treatment response. *Brain*. 2017 Sep 1;140(9):2426-2443. doi: 10.1093/brain/awx185. PMID: 29050389
IF = 10.84
13. **Lugaresi A**, De Robertis F, Clerico M, Brescia Morra V, Centonze D, Borghesan S, Maniscalco GT, On Behalf Of The River Study Group. Long-term adherence of patients with relapsing-remitting multiple sclerosis to subcutaneous self-injections of interferon β -1a using an electronic device: the RIVER study. *Expert Opin Drug Deliv*. 2016 Feb 24:1-5. [Epub ahead of print]. PMID: 26909646
IF = 5.657
14. Moccia M, Palladino R, Russo C, Massarelli M, Nardone A, Triassi M, **Lugaresi A**, Brescia Morra V. How many injections did you miss last month? A simple question to predict interferon β -1a adherence in multiple sclerosis. *Expert Opin Drug Deliv*. 2015 Dec;12(12):1829-35. doi: 10.1517/17425247.2015.1078789. Epub 2015 Sep 15. PMID: 26371561
IF=5.434
15. Spadaro M, Caldano M, Marnetto F, **Lugaresi A**, Bertolotto A. Natalizumab treatment reduces L-selectin (CD62L) in CD4+ T cells. *J Neuroinflammation*. 2015 Aug 12;12:146. doi: 10.1186/s12974-015-0365-x. PMID: 26259673
IF=5.785
16. **Lugaresi A**. Pharmacology and clinical efficacy of dalfampridine for treating multiple sclerosis. *Expert Opin Drug Metab Toxicol*. 2014 Dec 16:1-12. [Epub ahead of print], PMID: 25510833
IF =3.53
17. **Lugaresi A**, Rottoli MR, Patti F. Fostering adherence to injectable disease-modifying therapies in multiple sclerosis. *Expert Rev Neurother*. 2014 Sep;14(9):1029-42. doi: 10.1586/14737175.2014.945523. Epub 2014 Aug 11.
IF=2,78
18. Giordano A, **Lugaresi A**, Confalonieri P, Granella F, Radice D, Trojano M, Martinelli V, Solari A, on behalf of the SIMS-Practice group. Implementation of the "Sapere Migliora" information aid for newly diagnosed people with multiple sclerosis in routine clinical practice: a late-phase controller trial. *Multiple Sclerosis Journal* 2014 Jan 13, doi:10.1177/1352458513519180
IF=4,47
19. Kalincik T, Vivek V, Jokubaitis V, Lechner-Scott J, Trojano M, Izquierdo G, **Lugaresi A**, Grand'maison F, Hupperts R, Oreja-Guevara C, Bergamaschi R, Iuliano G, Alroughani R, Van Pesch V, Amato MP, Slee M, Verheul F, Fernandez-

Bolanos R, Fiol M, Spitaleri DL, Cristiano E, Gray O, Cabrera-Gomez JA, Shaygannejad V, Herbert J, Vucic S, Needham M, Petkovska-Boskova T, Sirbu CA, Duquette P, Girard M, Grammond P, Boz C, Giuliani G, Rio ME, Barnett M, Flechter S, Moore F, Singhal B, Bacile EA, Saladino ML, Shaw C, Skromne E, Poehlau D, Vella N, Spelman T, Liew D, Kilpatrick TJ, Butzkueven H; MSBase Study Group. Sex as a determinant of relapse incidence and progressive course of multiple sclerosis. *Brain*. 2013 Dec;136(Pt 12):3609-17. doi: 10.1093/brain/awt281. Epub 2013 Oct 18. IF= 10.23

20. **Lugaresi A.** RebiSmart™ (version 1.5) device for multiple sclerosis treatment delivery and adherence. *Expert Opin Drug Deliv*. 2013 Feb;10(2):273-83. doi: 10.1517/17425247.2013.746311. Epub 2012 Dec 20. IF= 4,12