

2013



ALMA MATER STUDIORUM  
UNIVERSITÀ DI BOLOGNA



School of Pharmacy, Biotechnology and Sport Science  
**LAUREA (FIRST CYCLE DEGREE/  
BACHELOR - 180 ECTS) IN APPLIED  
PHARMACEUTICAL SCIENCES**  
A.Y. 2013/2014

Programme Director Prof. Ferruccio Poli

REPORT

Study Programme Report  
Applied Pharmaceutical Sciences  
Programme ex D.M. 270/04 - Code 8518 - Class L-29  
School of Pharmacy, Biotechnology and Sport Science  
Programme Director Prof. Ferruccio Poli

Created in collaboration with Teaching and Learning Administrative Area (AFORM – Area della Formazione) – Quality Assurance Unit

Edited by AAGG – University Web Portal Division and CeSLA – Web Technology Division, with MultiPublishing technology

Release date: July 2013

Academic year of reference: 2013/2014

[www.unibo.it/QualityAssuranceEn](http://www.unibo.it/QualityAssuranceEn)

# INDICE

<b>What is the Study Programme Report?</b> .....	1
<b>A. Presentation and prospects</b> .....	2
A.1. Presentation .....	2
A.2. Admission requirements .....	2
A.3. Learning outcomes .....	2
A.4. Career opportunities .....	4
A.5. Opinion of social partners and potential employers .....	4
A.6. Further studies .....	4
<b>B. Teaching and Learning</b> .....	5
B.1. Course Structure Diagram .....	5
B.2. Calendar and lecture timetable .....	5
<b>C. Resources and services</b> .....	6
C.1. Teachers .....	6
C.2. Student services: offices .....	6
C.2.1. Future students .....	6
C.2.2. Enrolled students .....	6
C.2.3. International students .....	6
C.2.4. Graduates .....	6
<b>D. The Study Programme in figures</b> .....	7
D.1. Students starting their university careers .....	7
D.1.1. Enrolments and registrations .....	7
D.1.2. Additional data on students' starting their university careers .....	9
D.1.2.1. Candidates registered for the entrance exam .....	9
D.1.2.2. Incoming students .....	10
D.1.2.3. Additional Learning Requirements .....	12
D.2. Regularity of studies .....	13
D.2.1. Students leaving the Programme between years 1 and 2 .....	13
D.2.2. Regular graduates .....	15
D.2.3. Additional data on regularity of studies .....	16
D.2.3.1. Credits obtained by students in the 1st year .....	16
D.2.3.2. Exams passed and average grade .....	17
D.3. Opinions of graduates and attending students .....	19
D.3.1. Opinion of graduates .....	19
D.3.2. Additional data on opinions of students .....	20
D.3.2.1. Opinion of attending students .....	20
D.4. Entry into the world of work .....	21
D.4.1. Employment situation .....	21
D.5. Information on pre-reform programmes (DM 509/99) .....	22
D.5.1. Students starting their university careers .....	22
D.5.1.1. Enrolments and registrations .....	22
D.5.1.2. Additional data on students' starting their university careers .....	22
D.5.1.2.1. Candidates registered for the entrance exam .....	22
D.5.1.2.2. Incoming students .....	22
D.5.2. Regularity of studies .....	22
D.5.2.1. Students leaving the Programme between years 1 and 2 .....	22
D.5.2.2. Regular graduates .....	23
D.5.2.3. Additional data on regularity of studies .....	25
D.5.2.3.1. Credits obtained by students in the 1st year .....	25
D.5.2.3.2. Exams passed and average grade .....	25

D.5.3. Opinions of attending students and graduates .....	26
D.5.3.1. Opinion of graduates .....	26
D.5.3.2 Additional data on opinions of students .....	28
D.5.3.2.1. Opinion of attending students .....	28
D.5.4. Entry into the world of work .....	29
D.5.4.1. Employment situation .....	29
<b>E. Find out more: the quality of your Study Programme .....</b>	<b>33</b>
<b>F. Glossary terms .....</b>	<b>36</b>

# WHAT IS THE STUDY PROGRAMME REPORT?

## What is the Study Programme Report?

The Study Programme Report provides updated information which is important for the purposes of Quality Assurance and is published annually by the University of Bologna.

The main aspects of the teaching programme are described in detail, with a view to assuring the principle of transparency and promoting self-assessment and continuous improvement processes.

The document provides a concrete overview of the features and results of the Study Programme for students, families, employers and so on.

For example, regarding the current issue of employment, it describes the learning outcomes and career opportunities; it also includes statistics on the percentage of employed graduates (D.4. Employment situation).

The document is organised into five sections and a glossary:

## A. Presentation and prospects

Key information on the Study Programme, including the expected learning outcomes, career opportunities and further studies.

## B. Teaching and Learning

The updated course structure diagram with the full titles and listings of the course units and the latest published lecture timetable.

## C. Resources and services

The list of teaching staff and their relative curricula, the offices (secretariats), services (work placements) and infrastructures (libraries, laboratories) available to students.

## D. The Study Programme in Figures

Key data shows how many students are enrolled, how many have been assigned additional learning requirements, how many drop out after the first year, how many graduate in line with the programme schedule, the opinions of attending and graduating students on the teaching programmes and information concerning graduate employment.

## E. Find out more: the quality of your Study Programme

How the quality system applied to your Study Programme works. The quality system of your Study Programme is a set of processes and responsibilities adopted to guarantee the quality of all Study Programmes at the University of Bologna.

## NOTES:

- Reports are available for all Study Programmes for which it is possible to enrol in the first year in academic year 2012/2013: the information and data provided is as updated as possible.
- Sections A, B and C provide data for the academic year 2012/2013.
- Section D presents data regarding the Study Programmes in the last three academic years.
- The information and data were taken from the University databases and the reports published by the [Statistical Observatory of the University of Bologna](#) and [AlmaLaurea](#), and are updated to **15 June 2012**.

## A. PRESENTATION AND PROSPECTS

*This section presents the key information concerning the Study Programme, including the expected learning outcomes, career opportunities and further studies, updated to the academic year 2013/2014.*

### A.1. PRESENTATION

*This paragraph provides information on the specific learning outcomes of the Study Programme and the curriculum.*

The study programme in APPLIED PHARMACEUTICAL SCIENCES aims to train students to become professionals in the areas of herbal medicine and environmental toxicology and safety.

With the skills acquired in the field of herbal medicine, graduates in Applied Pharmaceutical Sciences are able to work at specialist level in the fields of processing, formulation, packaging, sales and control of herb-based health products, guaranteeing user safety and protection of consumer health.

Graduates may also work in the agricultural field in the production of medicinal plants and will have the basic knowledge required to manage a production company.

The cultural knowledge and professional skills acquired in environmental and toxicology fields will allow graduates to work in analytical and experimental laboratories, carrying out activities linked to biological, chemical, microbiological and toxicological controls and risk assessment associated to the presence of toxic substances in food and the environment, in order to protect the health of the population.

### A.2. ADMISSION REQUIREMENTS

*This paragraph provides information on the knowledge required for admission to the Study Programme.*

Students wishing to enrol in the degree programme in Applied Pharmaceutical Sciences must possess a high school leaving qualification lasting 5 years or an equivalent foreign qualification. Admission to the study programme is subject to the possession of basic knowledge of Mathematics, Physics, Biology and Chemistry, as laid down in the ministerial programmes for secondary schools. In order to enter the course, candidates are required to sit and pass a compulsory entry test.

Despite passing the test mentioned, students who do not reach the minimum expected score are allowed to enter the course but will be allocated an additional learning requirement, called OFA.

Any additional learning requirement will be fulfilled by following the rules laid down/described in the degree programme teaching regulations.

[INFORMATION on entry TEST \(italian\)](#)

The assessment methods for admission, as well as the allocation of additional learning requirements, where applicable, are laid down in the Degree Programme Teaching Regulation.

### A.3. LEARNING OUTCOMES

*This paragraph provides information on the knowledge and skills students will have acquired by the end of the Programme.*

#### KNOWLEDGE AND UNDERSTANDING:

Graduates:

- will be familiar with the fundamental principles of chemistry in the field of molecular structure, reactions and chemical balances;
- will be familiar with the fundamental principles of organic chemistry, the main classes of organic compounds and their reactivity;
- will know the main structures of animal and plant cells, and the reproductive mechanisms of cells and organisms;
- will possess knowledge of general and applied biochemistry used to understand biological mechanisms and metabolic activities;
- will possess knowledge of the properties of nutrients contained in food and dietary products;
- will be familiar with microscopic and macroscopic anatomy, will know the organisation of tissues and different organs of the human body;
- will understand cell physiology and the physiology of organs and apparatus in the human body.

The above knowledge and understanding are achieved through participation in lectures, practical exercises, self-study foreseen in the learning activities in chemical, biological and biochemical fields.

Assessment of the achievement of the described learning outcomes shall be mainly through written and oral exams.

#### APPLYING KNOWLEDGE AND UNDERSTANDING

Graduates

Know and know how to apply the basic notions of mathematics and physics.

Possess the basic notions of computing and will be able to use the most common IT tools.

Possess applied knowledge in one of the following areas:

#### **Environmental Toxicology:**

- Know the toxicity mechanisms of chemical and physical compounds, as well as the interactive effects with other molecules in the environment.
- Know and are able to apply instrumental techniques for the chemical and toxicological analysis of polluting substances in the environment and in matrices, and assess the obtained results.
- Are able to describe, measure, explain and forecast the severity and frequency of the negative effects of toxic substances in foods and the environment on living organisms.

#### **Herbal techniques:**

- Know how to recognise herbs and assess their possible use in therapeutic and healthcare fields.
  - Are familiar with the technological transformation processes of a plant substrate into a finished commercial product.
  - Are able to apply specific instrumental and laboratory techniques aiming at:  
Analysing drugs and assessing the features of innovative compounds and clinical experimentation,  
Analysing the active pharmacological ingredients of herbal medicines,  
Transforming plant raw materials into finished products suitable for human use,  
Carrying out chemical analyses of polluting substances in the environment and in biological matrices (toxicological analysis methods).
- The ability to apply the above knowledge and understanding will be achieved through laboratory work, applied case studies presented by the lecturers in class and practical and computing exercises, in particular in biological, chemical and pharmaceutical subjects, as well as during the internship and in preparation of the final examination.

These learning outcomes are assessed through written and oral exams and laboratory reports; the students will also be set specific tasks which aim to demonstrate their command of tools, methods and critical autonomy. During the internship, students will be assessed through a report presented by the students and the tutor.

#### **MAKING JUDGEMENTS**

Graduates:

- Implement quality controls and environmental risk assessments.
- Are able to assess the quality of herbal products (herbalist technician area), risk/benefit analysis of elements and pollutant risks (toxicological-environmental area).
- Evaluate risk/benefit analyses relating to the complete production cycle of herbal products.
- Organise and plan activities, generate new proposals and solve problems.
- Work autonomously, formulate independent opinions and take autonomous decisions.

Judgement skills are developed in particular through practical exercises, supervised seminars and the production of written assignments, above all in the areas of quality assessment and certification, as well as during the internship and the activities assigned by the supervising professor in preparation of the final dissertation.

Judgement skills are assessed through laboratory reports, and the students' ability to work autonomously as well as in groups during the activities assigned in preparation of the final examination, as well as the internship.

#### **COMMUNICATION SKILLS**

Graduates

- possess appropriate knowledge of the English language to consult texts and scientific publications in the health field, having developed their English language skills (level B1 of the European reference framework).
- Possess relational and communication skills appropriate to exercising the profession, in particular concerning relations with healthcare workers.
- Are able to work alongside other professionals for the production and implementation of plans and procedures to manage safety and quality problems, in line with specific regulations.
- Possess a spirit of initiative and entrepreneurialism which allows them to work in groups.

Written and oral communication skills are developed in particular during seminars, practical exercises, learning activities and the internship, which also require the production of reports and written assignments as well as their oral presentation. The above communication skills will be assessed through the production and presentation of a dissertation for the final examination. The English language is learned and assessed through seminars and e-learning activities and relative tests.

#### **LEARNING SKILLS:**

Graduates:

- will be able to understand and keep abreast of national and European legislation in specific professional sectors including the protection of industrial property in the pharmaceutical field, intermediate distribution and administration to the public of medicines and healthcare products, legislation in the field of herbal products, chemical safety or environmental protection.
- will be able to analyse and summarise and will possess theoretical learning skills.

Learning skills are acquired throughout the study period, particularly during the course units and self-study in legal and legislative fields, and the consultation of sectoral databases.

Learning skills are evaluated through continuous assessment during the learning activities which require the presentation of autonomously researched data as well as through tutoring activities relative to the preparation of projects and the evaluation of the self-learning skills developed during the activities in preparation of the final examination.

## A.4. CAREER OPPORTUNITIES

*This paragraph provides information on the occupational profile, functions and fields of employment available to graduates of this Programme.*

Graduates may fill the following professional roles and relative functions in the listed fields of employment:

### **-Herbalist**

Recognises medicinal plants and controls their cultivation and production techniques;

Grows and processes medicinal plants;

Organises specific laboratory activities which apply extractive, analytical, technological, microbiological methods as required by law;

Formulates, produces and controls herbal and phytocosmetic products;

Carries out flora protection activities concerning wild medicinal plants and controls their collection in State, regional and provincial authorities;

Provides healthcare information on the effectiveness, contraindications, usage and other indications concerning plant-based healthcare products;

Carries out quality control on medicinal products following quality system certification standards;

Cultivates medicinal plants and produces herbal products;

Draws up HACCP self-control and product traceability programmes, for commercial businesses and production firms;

Prepares information materials which accompany herbal medicines;

Provides information on the contents, preservation, methods of use and times, purposes and activities of products;

Provides technical and scientific advice on the health and hygiene supervision of medicinal plants and derivatives to state administrations, in particular in the Ministries of Health, Natural Resources and Forestry, Trade and Industry and Finance.

Career opportunities:

Freelance worker or employee in:

Herbalist's

Pharmacies and Para-pharmacies (manager of herbal products department)

Plant-based health product stores

Herbal, phytocosmetic, dietary-food industries (production and sales)

Herbal laboratories and quality control bodies

Scientific information activities for manufacturers in the sector

Consulting for herbal laboratories and production/sales firms concerning statutory information notices for plant-based food supplements

Medicinal plant promotion and advertising

National Health Service

### **- Environmental toxicology**

Analytical, biochemical, microbiological and toxicological controls to assure environmental safety and food product quality;

Acquires and critically interprets scientific documents to assess the risks to humans associated to the presence of toxic substances in foods and in the environment;

Collaborates in the definition of plans and procedures to manage safety and quality problems, in line with specific regulations.

Career opportunities:

Freelance worker or employee in:

Public and private chemical, microbiological, toxicological, environmental and food analysis laboratories

Industries in the environmental control sector

Environmental control and management departments in public and private companies Study centres and authorities for the development of technical standards and quality certification

Chemical, pharmaceutical, food and cosmetics and related industries

Universities and other public and private research bodies.

The degree programme project has been submitted to selected external stakeholders in order to receive their opinions and feedbacks on the learning outcomes and the professional profiles .

## A.5. OPINION OF SOCIAL PARTNERS AND POTENTIAL EMPLOYERS

*This paragraph describes the outcome of the consultation with the representative employment and trade organisations.*

This information is not available in English at this time.

## A.6. FURTHER STUDIES

It gives access to second cycle studies (laurea magistrale) and 1 st level master degree.



## B. TEACHING AND LEARNING

*This section describes the updated course structure diagram (for academic year 2013/2014), with the full titles and listings of the course units and the latest published lecture timetable.*

### B.1. COURSE STRUCTURE DIAGRAM

*The link takes you to the Study Programme course structure diagrams. You can also access to each course unit content.*

- [Study plan: all course units in the programme](#)

### B.2. CALENDAR AND LECTURE TIMETABLE

*The links take you to the teaching calendar (exam session and final examination session) and the lecture timetable (in Italian).*

- [Lecture timetable](#)
- [Exam sessions](#)
- [Final examination sessions](#)

## C. RESOURCES AND SERVICES

*This section provides a list of teaching staff and their relative curricula and and description of the services available to students for the academic year 2013/2014.*

### C.1. TEACHERS

*The paragraph lists the lecturers who teach in the Study Programme: from here you can access the personal web pages of each one.  
Information updated to 28 May 2013 (in Italian).*

#### **Permanent teaching staff:**

<a href="#">Angelini, Sabrina</a>	<a href="#">Cappadone, Concettina</a>	<a href="#">Hrelia, Patrizia</a>	<a href="#">Rambaldi, Mirella</a>
<a href="#">Antognoni, Fabiana</a>	<a href="#">Carboni, Lucia</a>	<a href="#">Lenzi, Monia</a>	<a href="#">Rampa, Angela</a>
<a href="#">Arbizzani, Catia</a>	<a href="#">Castellini, Alessandra</a>	<a href="#">Leoni, Alberto</a>	<a href="#">Roberti, Marinella</a>
<a href="#">Barbanti, Lorenzo</a>	<a href="#">Cavallari, Cristina</a>	<a href="#">Luppi, Barbara</a>	<a href="#">Romualdi, Patrizia</a>
<a href="#">Belluti, Federica</a>	<a href="#">Cavalli, Andrea</a>	<a href="#">Manaresi, Elisabetta</a>	<a href="#">Rovelli, Tiziano</a>
<a href="#">Bigucci, Federica</a>	<a href="#">Cerchiara, Teresa</a>	<a href="#">Martelli, Alberto Maria</a>	<a href="#">Sapone, Andrea</a>
<a href="#">Bolognesi, Maria Laura</a>	<a href="#">Dinelli, Giovanni</a>	<a href="#">Masiero, Stefano</a>	<a href="#">Tonelli, Roberto</a>
<a href="#">Brigidi, Patrizia</a>	<a href="#">Ferri, Elida Nora</a>	<a href="#">Mercolini, Laura</a>	<a href="#">Vitali, Beatrice</a>
<a href="#">Brigotti, Maurizio</a>	<a href="#">Ferroni, Stefano</a>	<a href="#">Pieraccini, Silvia</a>	<a href="#">Zattoni, Andrea</a>
<a href="#">Budriesi, Roberta</a>	<a href="#">Fiorentini, Diana</a>	<a href="#">Poli, Ferruccio</a>	
<a href="#">Cagliari, Francesca</a>	<a href="#">Guardigli, Massimo</a>	<a href="#">Prata, Cecilia</a>	
<a href="#">Canossa, Marco</a>	<a href="#">Guernelli, Susanna</a>	<a href="#">Raggi, Maria Augusta</a>	

#### **Contract teaching staff:**

[Borsari, Giuseppina](#)  
[Calandriello, Francesca](#)  
[Ferrari, Patrizio](#)  
[Marescalchi, Ombretta](#)  
[Menotta, Simonetta](#)  
[Mortera, Gabriella](#)  
[Poluzzi, Vanes](#)  
[Rampinelli, Patrizia](#)  
[Savini, Saverio](#)  
[Speroni, Ester](#)

### C.2. STUDENT SERVICES: OFFICES

#### C.2.1. FUTURE STUDENTS

*The link take you to the webpage which provides specific information about the offices and the services for the future students (in Italian).*

- [Future students](#)

#### C.2.2. ENROLLED STUDENTS

*The link take you to the webpage with the information on the offices and the services for the enrolled students (in Italian).*

- [Enrolled students](#)

#### C.2.3. INTERNATIONAL STUDENTS

*The link take you to the webpage with the information on the offices and the services for the international students (in Italian).*

- [International students](#)

#### C.2.4. GRADUATES

*The link take you to the webpage with the information on the offices and the services for the graduates (in Italian).*

- [Graduates](#)

## D. THE STUDY PROGRAMME IN FIGURES

Information on students' starting their university careers, how many students are in line with the regular programme, opinions of students and graduates on the teaching programmes and information concerning graduate employment.

This section provides the data of the last academic years for the Study Programme (SP) and a comparison with similar Study Programmes. The University of Bologna has divided its Study Programmes into four groups:

- **BIOMEDICAL** group: Study Programmes of the Schools of Pharmacy, Biotechnology and Sport Science; Medicine; Agriculture and Veterinary Medicine
- **SCIENTIFIC-TECHNOLOGICAL** group: Study Programmes of the Schools of Engineering and Architecture; Sciences
- **SOCIAL SCIENCES** group: Study Programmes of the Schools of Economics, Management, and Statistics; Law, Political Sciences
- **HUMANITIES** group: Study Programmes of the Schools of Arts, Humanities, and Cultural Heritage; Foreign Languages and Literatures, Interpreting and Translation; Psychology and Education

The section presents the results of the Study Programme for the last three academic years.

Main data shows how many students enrolled, the number of students assigned OEA, how many drop out after the first year, how many graduate in line with the programme schedule, the opinions of attending and graduating students on the teaching programmes and information concerning graduate employment.

The information and data presented in this section, updated to 28 May 2013, were taken from University databases and [AlmaLaurea](#).

Study Programmes may be subject to degree programme system modifications from one academic year to the next, and the data provided in this section may refer to a programme with a slightly different system to the one currently running (such as programme title, course structure diagram and list of lecturers). However, indicatively the data presents the general trend of the Study Programme over the past three years.

Most of the Study Programmes running at the University of Bologna have been reformed in compliance with DM 270/04, most of them from the academic year 2008/2009. In the reports provided for these Programmes, paragraph D.5. refers to the Study Programmes as they were presented prior to the reform.

### D.1. STUDENTS STARTING THEIR UNIVERSITY CAREERS

Characteristics of incoming students at the beginning of their university careers. Tables and graphs provide information on the number of **registered students**, focusing on the characteristics of the students, results of any entrance tests and the students assigned any **additional learning requirements**.

#### D.1.1. ENROLMENTS AND REGISTRATIONS

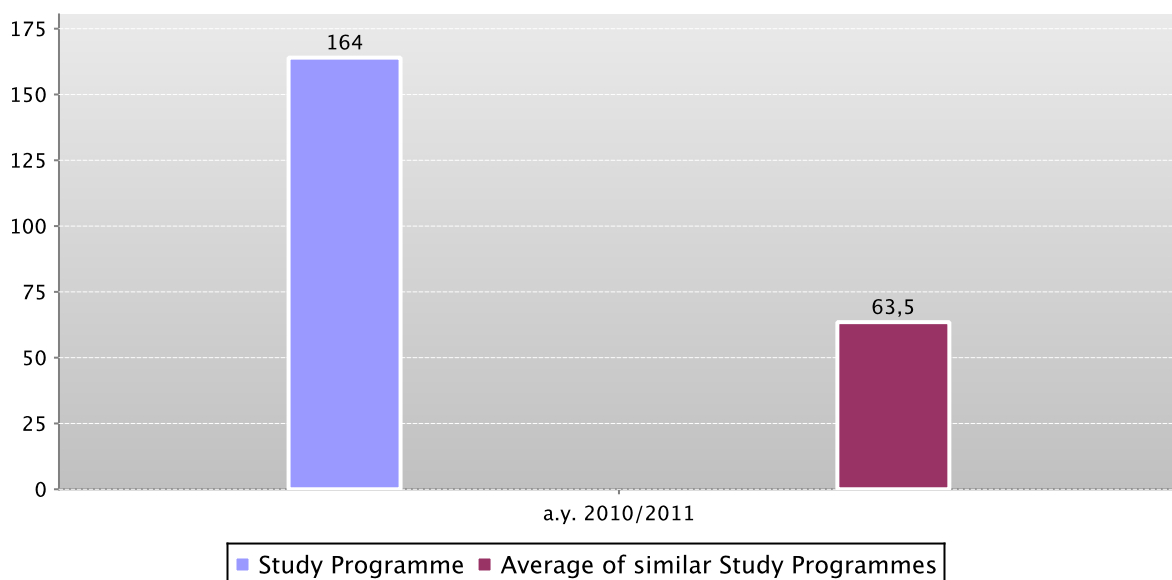
The **graph** shows the number of **students enrolled in the 1st year** compared with the **average of similar Study Programmes** (which belong to the same group).

In addition, the **table** shows the total number of **registered students** and the total number of enrolled students.

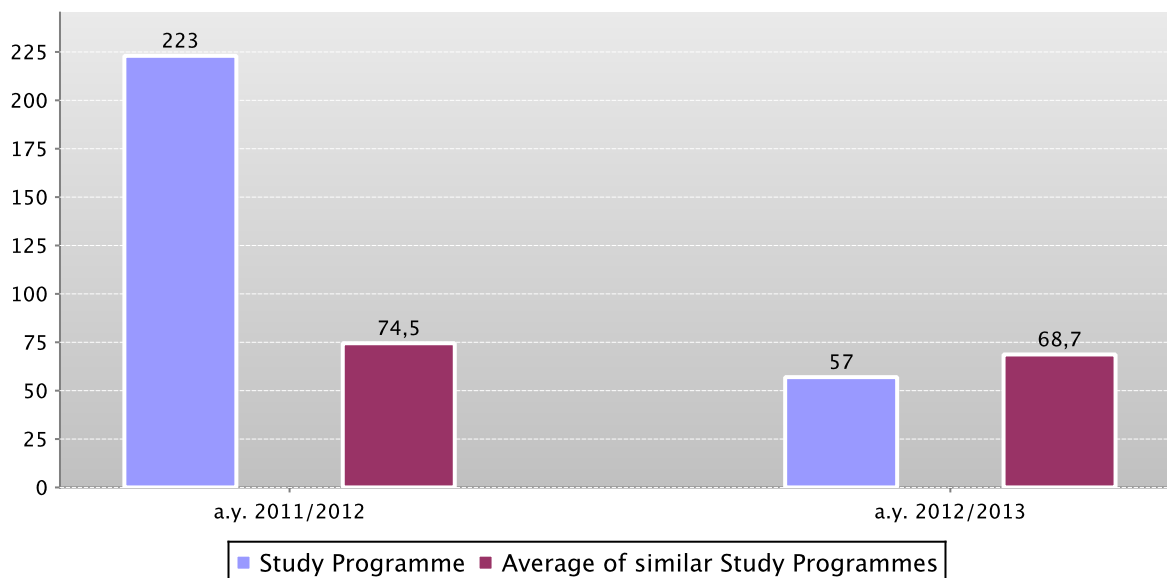
Data of the Study Programme is compared with the average of the Study Programmes of **average of similar Study Programmes** (which belong to the same group) for the indicated academic years.

First year enrolments

Data of the Study Programme D.M. 270/04 Applied Pharmaceutical Sciences (code 0914)



Data of the Study Programme D.M. 270/04 Applied Pharmaceutical Sciences (code 8518)



Data of the Study Programme D.M. 270/04 Applied Pharmaceutical Sciences (code 0914)

	a.y. 2010/2011		
	Registered students	N. first year enrolments	Total N. enrolled students
Study Programme	154	164	271
Average of similar Study Programmes	48,9	63,5	136,8

Data of the Study Programme D.M. 270/04 Applied Pharmaceutical Sciences (code 8518)

	a.y. 2011/2012			a.y. 2012/2013		
	Registered students	N. first year enrolments	Total N. enrolled students	Registered students	N. first year enrolments	Total N. enrolled students
Study Programme	228	223	408	51	57	294
Average of similar Study Programmes	58,1	74,5	106,6	51,8	68,7	104,4

## D.1.2. ADDITIONAL DATA ON STUDENTS' STARTING THEIR UNIVERSITY CAREERS

### D.1.2.1. CANDIDATES REGISTERED FOR THE ENTRANCE EXAM

The number of students sitting the [entrance exam](#) for the Study Programme. Concerns the programmes with restricted access. The methods of managing the call for applications and the list of candidates, including the methods for filling any unclaimed places, may vary from year to year.

The **table** shows the number of places available for the study programme, the number of candidates enrolling for the exam, the number sitting the exam and the percentage of students sitting the exam compared to the number of places available.

For all programmes with restricted access, candidates are required to sit an entrance exam and there are a limited number of places available. The entrance exam is a test which is used to draw up a graded list of candidates; students may enrol in the programme according to their place in the list. The methods of managing the call for applications and the list of candidates, including the methods for filling any unclaimed places, may vary from year to year. The test may be specific to a Degree Programme or may be part of a single exam covering several programmes from the same university or from other universities (during the registration the students should indicate their first choice).

The following definitions apply:

**Available places** = the number of places laid down in the call for applications to the Study Programme, or determined by subsequent legal provisions; these exclude any additional places reserved according to special provisions of the programme (e.g. for international study programmes, they do not include places for foreign students selected from other universities; for all programmes with restricted access regulated nationally, these do not include the places reserved for transferring students).

**Number of candidates for the exam** = number of students registered for the exam indicating the study programme as their first choice;

**Number of participants in the exam** = number of students participating in the exam indicating the study programme as their first choice;

**Number of participants in the exam for every available place** = number of students participating in the exam who indicated the study programme as their first choice as a ratio of the number of places available on the programme.

Data of the Study Programme D.M. 270/04 Applied Pharmaceutical Sciences (code 8518)

	Number of places available (a)	Candidates registered for the exam	Candidates sitting the exam (b)	Number of candidates sitting the exam per place available (b/a)
a.y. 2012/2013	150	96	92	0,6

## D.1.2.2. INCOMING STUDENTS

Geographic origin, type of high school certificate, age and gender of students.

Data shows a homogeneous group of students (**cohort**) which started together their academic career. Students which have passed to an other Study Programme, transferred from an other university, or registered to a 2nd degree are not included.

The **tables** show the number, geographic origin, gender, age, type and grade of high school certificate of students enrolling in the degree programme.

Data of the Study Programme is compared with the average of the Study Programmes of **average of similar Study Programmes (which belong to the same group)** for the indicated academic years.

Data of the Study Programme D.M. 270/04 Applied Pharmaceutical Sciences (code 0914)

		Registered students	Geographic origin					Gender		Average age of registered students		
			Students coming from the province of the Study Programme site	Students coming from other provinces where Unibo has a site	Students coming from other provinces of Emilia Romagna region	Students coming from other Italian regions	Students coming from abroad	M	F	19 or less	20 - 24	25 or more
Students 2010/2011	Study Programme	154	50,6%	30,5%	1,9%	16,2%	0,6%	26,6%	73,4%	68,8%	24,7%	6,5%
	Average of similar Study Programmes	48,9	37,0%	25,5%	7,9%	27,5%	2,1%	44,1%	55,9%	62,3%	28,7%	9,1%

		High school certificate					Grade of High school			
		Vocational schools	Technical Colleges	High school specializing in education and in psycho-pedagogical science	High schools specializing in classical studies, modern languages, science education	Other Italian or foreign high schools	Grade ranging from 60 to 69	Grade ranging from 70 to 79	Grade ranging from 80 to 89	Grade ranging from 90 to 100
Students 2010/2011	Study Programme	13,0%	20,8%	11,0%	51,9%	3,2%	32,5%	32,5%	19,5%	15,6%
	Average of similar Study Programmes	9,7%	27,6%	4,5%	49,6%	8,6%	28,2%	33,3%	21,6%	14,8%

Data of the Study Programme D.M. 270/04 Applied Pharmaceutical Sciences (code 8518)

		Registered students	Geographic origin					Gender		Average age of registered students		
			Students coming from the province of the Study Programme site	Students coming from other provinces where Umbro has a site	Students coming from other provinces of Emilia Romagna region	Students coming from other Italian regions	Students coming from abroad	M	F	19 or less	20 - 24	25 or more
Students 2011/2012	Study Programme	228	38,2%	32,9%	2,2%	25,4%	1,3%	19,7%	80,3%	68,0%	27,2%	4,8%
	Average of similar Study Programmes	58,1	36,9%	22,9%	9,7%	27,4%	3,0%	41,8%	58,2%	65,1%	29,1%	5,9%
Students 2012/2013	Study Programme	51	39,2%	35,3%	3,9%	21,6%		15,7%	84,3%	70,6%	25,5%	3,9%
	Average of similar Study Programmes	51,8	35,6%	23,4%	10,3%	28,3%	2,4%	48,4%	51,6%	63,7%	29,7%	6,5%

		High school certificate					Grade of High school			
		Vocational schools	Technical Colleges	High school specializing in education and in psycho-pedagogical science	High schools specializing in classical studies, modern languages, science education	Other Italian or foreign high schools	Grade ranging from 60 to 69	Grade ranging from 70 to 79	Grade ranging from 80 to 89	Grade ranging from 90 to 100
Students 2011/2012	Study Programme	12,3%	20,6%	17,5%	42,5%	7,0%	27,6%	33,8%	25,0%	13,6%
	Average of similar Study Programmes	8,1%	24,2%	9,5%	50,5%	7,7%	26,6%	32,3%	21,6%	17,7%
Students 2012/2013	Study Programme	11,8%	23,5%	19,6%	35,3%	9,8%	23,5%	43,1%	21,6%	7,8%
	Average of similar Study Programmes	8,6%	23,2%	7,2%	54,0%	7,0%	22,1%	34,6%	23,1%	15,0%

### D.1.2.3. ADDITIONAL LEARNING REQUIREMENTS

Students on the programme assigned **additional learning requirements** (OFA). OFA are learning requirements assigned to enrolled students who have not demonstrated the full possession of the entrance requirements. The assessment methods of students' initial preparation and the fulfilment of the OFA are described in the Study Programme Regulations, and may change each year. Students not completing the additional learning requirements are obliged to re-enrol in year 1 as repeating students.

The **table** shows the number of **registered students**, the number of students assigned OFA, the number who fulfilled them, the percentage of students assigned the OFA compared to the number of enrolled students and the percentage fulfilling the OFA compared to those assigned them.

*Data of the Study Programme D.M. 270/04 Applied Pharmaceutical Sciences (code 0914)*

	Registered students (a)	Students assigned OFA (b)	Students who fulfilled OFA (c)	% of students assigned OFA compared to the number of enrolled students (b/a)	% of students fulfilling the OFA compared to number of students assigned (c/b)
Students 2010/2011	154	20	7	13,0%	35,0%

*Data of the Study Programme D.M. 270/04 Applied Pharmaceutical Sciences (code 8518)*

	Registered students (a)	Students assigned OFA (b)	Students who fulfilled OFA (c)	% of students assigned OFA compared to the number of enrolled students (b/a)	% of students fulfilling the OFA compared to number of students assigned (c/b)
Students 2011/2012	228	17	7	7,5%	41,2%
Students 2012/2013	51	0			

\*Note: At the time of publication of this report the number of students fulfilling the OFA can be measured for a.y. 2009/2010 and a.y. 2010/2011 only.



## D.2. REGULARITY OF STUDIES

*Insight into the regularity with which the students pass their exams.*

*Graphs and tables provide information on the number of students who leave the programme after the first year and the number of regular graduates, focusing on the number of credits obtained at the end of the first year, on the exams passed and average grade achieved for each course unit.*

### D.2.1. STUDENTS LEAVING THE PROGRAMME BETWEEN YEARS 1 AND 2

Here the number of students leaving the Study Programme is shown.

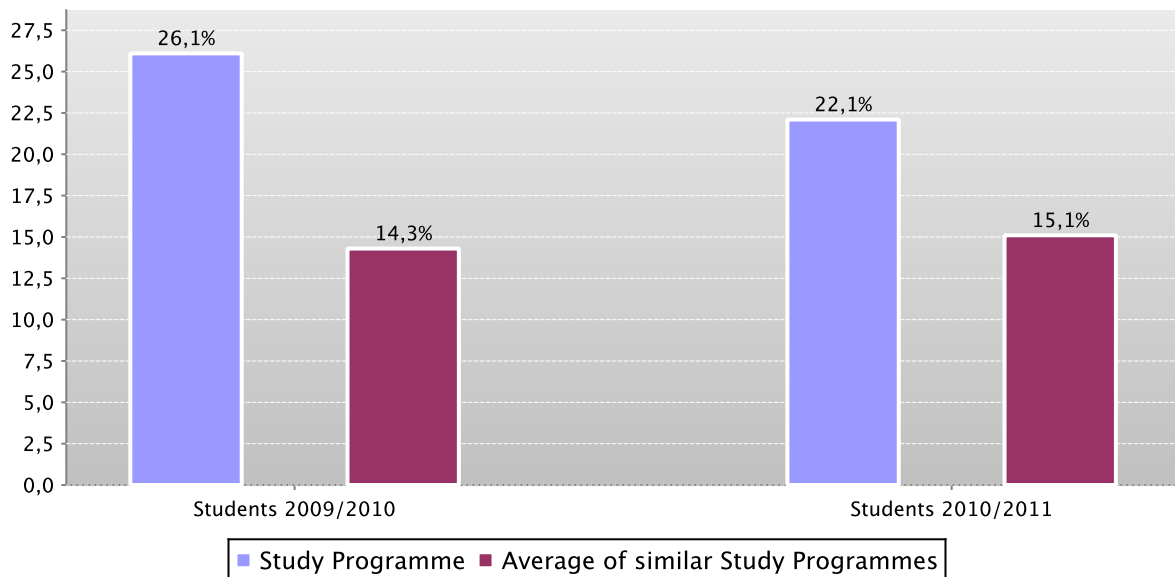
The **graph** shows the percentage of students who leave the programme after the first year compared to the average of similar Study Programmes (belonging to the same group).

The **table** shows the registered students, the percentage of students leaving the programme who pass to a different Study Programme in the same university, transfer to another university or withdraw from studies, as well as the enrolled repeating students and those enrolled in the second year.

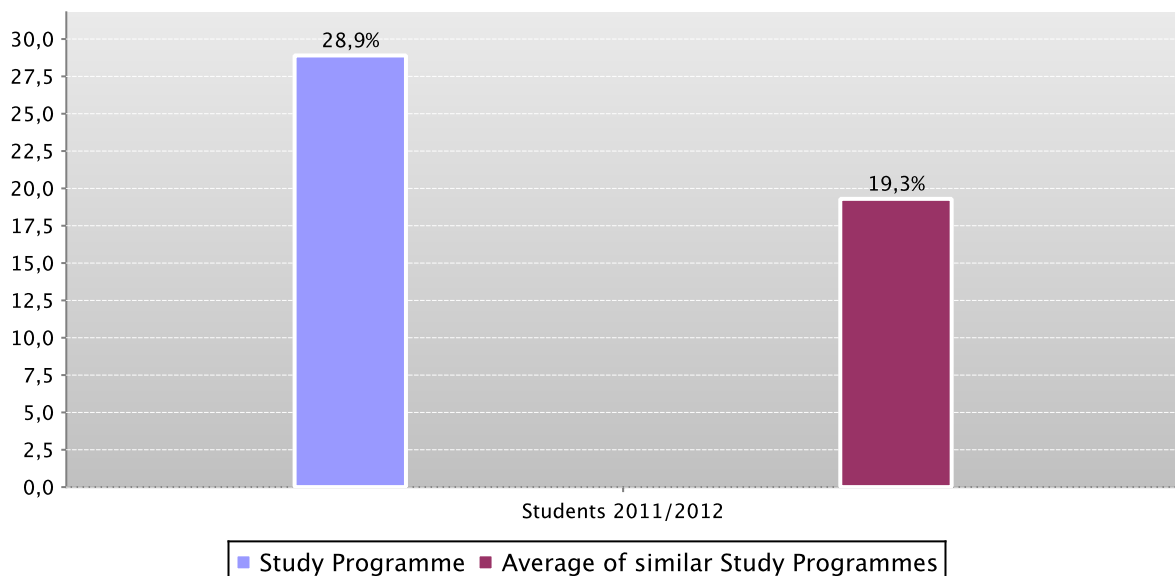
The Study Programme data is compared with the average of similar Study Programmes of (which belong to the same group), for students registered in the indicated academic years.

Percentage of withdrawals between years 1 and 2

*Data of the Study Programme D.M. 270/04 Applied Pharmaceutical Sciences (code 0914)*



*Data of the Study Programme D.M. 270/04 Applied Pharmaceutical Sciences (code 8518)*



Data of the Study Programme D.M. 270/04 Applied Pharmaceutical Sciences (code 0914)

		Registered students	% withdrawals	% passages and transfers	% repeating students	Students enrolled in the second year
Students 2009/2010	Study Programme	69	26,1%	14,5%	1,4%	40
	Average of similar Study Programmes	46,1	14,3%	6,8%	0,3%	36,3
Students 2010/2011	Study Programme	154	22,1%	25,3%	1,3%	79
	Average of similar Study Programmes	48,9	15,1%	9,4%	0,4%	36,8

Data of the Study Programme D.M. 270/04 Applied Pharmaceutical Sciences (code 8518)

		Registered students	% withdrawals	% passages and transfers	% repeating students	Students enrolled in the second year
Students 2011/2012	Study Programme	228	28,9%	29,4%	0,9%	93
	Average of similar Study Programmes	58,1	19,3%	12,9%	0,4%	39,1

### D.2.2. REGULAR GRADUATES

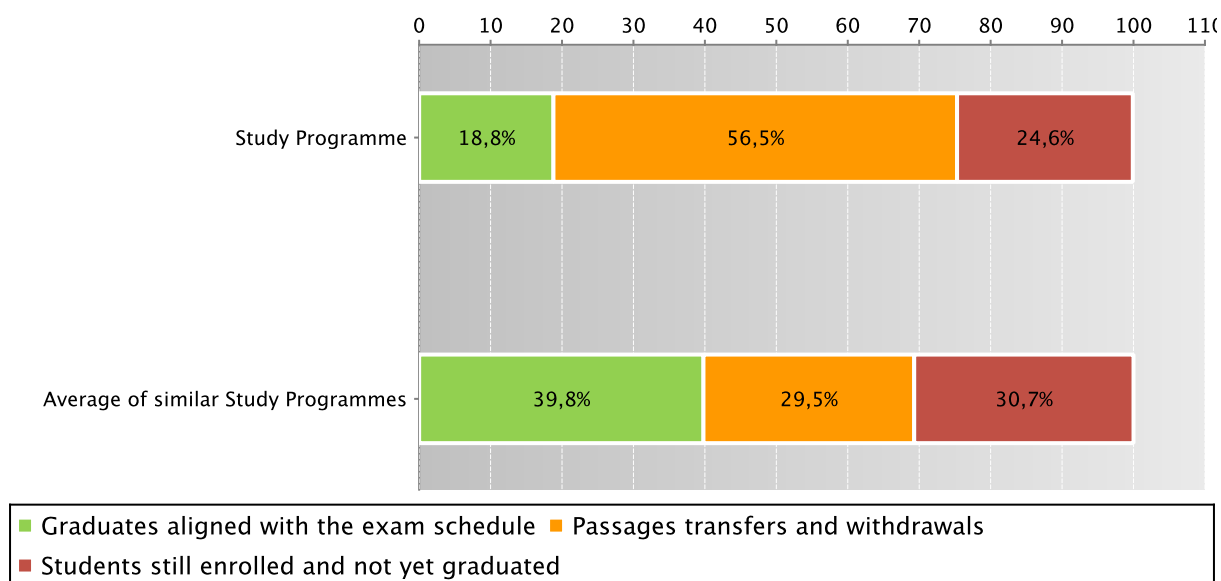
Here you will find information on regular graduates, on how many students, at the end of the regular programme duration, left the programme and how many are still enrolled but **not aligned to the exam schedule**.

The **graph** and the **table** show the situation concerning **registered students** for the indicated academic year, at the end of the regular duration of the Study Programme, highlighting the percentage of regular graduates, the number of students still enrolled (**not aligned to the exam schedule** and **repeating students**), students who have left the programme (including **passages**, **transfers** and **withdrawals**).

The Study Programme data is compared with the average of **similar Study Programmes** (which belong to the same group) for students registered in the indicated academic years.

Situation of students 2009/2010 at the end of regular duration of the study programme

Data of the Study Programme D.M. 270/04 Applied Pharmaceutical Sciences (code 0914)



Data of the Study Programme D.M. 270/04 Applied Pharmaceutical Sciences (code 0914)

	Registered students	Regular graduates		Passages transfers and withdrawals		Students still enrolled and not yet graduated		
		N.	%	N.	%	N.	%	
Students 2008/2009	Study Programme	49	6	12,2%	25	51,0%	18	36,7%
	Average of similar Study Programmes	42,7	16,4	38,4%	12,8	30,1%	13,4	31,4%
Students 2009/2010	Study Programme	69	13	18,8%	39	56,5%	17	24,6%
	Average of similar Study Programmes	46,1	18,3	39,8%	13,6	29,5%	14,2	30,7%

See data of previous academic years – Study Programme D.M. 509/99 Herbal Medicine (code 0036), Scientific Information on Pharmaceutical Products (code 0037), Environmental Toxicology (code 0540) [paragraph D.5.2.2.](#)

### D.2.3. ADDITIONAL DATA ON REGULARITY OF STUDIES

#### D.2.3.1. CREDITS OBTAINED BY STUDENTS IN THE 1ST YEAR

This offers an insight into how regularly students pass their exams.

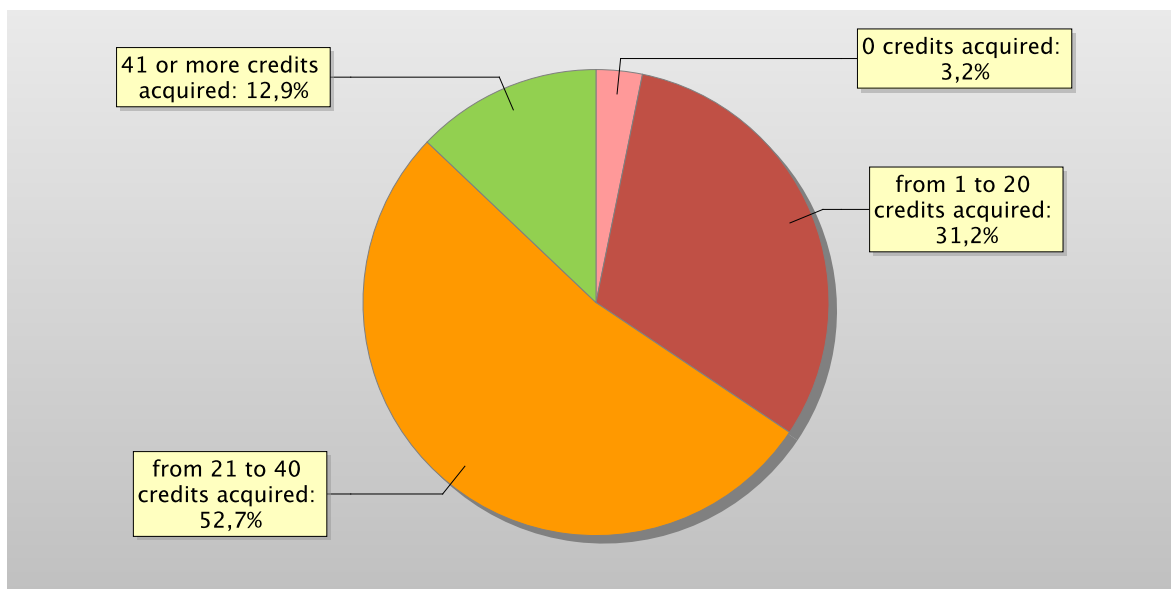
The **graph** shows the distribution of the students according to the number of **credits** obtained at the end of the first year.

In addition, the **table** shows the number of students registered at the second year and average **credits** obtained during the first year.

The Study Programme data is compared with the average of **similar Study Programmes** (which belong to the same group) for the indicated academic years.

Distribution of the students in 2011/2012 according to the number of credits obtained at the end of the first year\*

Data of the Study Programme D.M. 270/04 Applied Pharmaceutical Sciences (code 8518)



Data of the Study Programme D.M. 270/04 Applied Pharmaceutical Sciences (code 0914)

		Students enrolled in the 2nd year	% students with *				Average credits per student
			0 credits acquired	from 1 to 20 credits acquired	from 21 to 40 credits acquired	41 or more credits acquired	
Students 2009/2010	Study Programme	40		35,0%	25,0%	40,0%	32,4
	Average of similar Study Programmes	36,3	3,4%	18,7%	40,7%	37,2%	33,4
Students 2010/2011	Study Programme	79	2,5%	12,7%	54,4%	30,4%	34
	Average of similar Study Programmes	36,8	2,3%	17,5%	40,2%	40,0%	34,8

Data of the Study Programme D.M. 270/04 Applied Pharmaceutical Sciences (code 8518)

	Study Programme	Students enrolled in the 2nd year	% students with *				Average credits per student
			0 credits acquired	from 1 to 20 credits acquired	from 21 to 40 credits acquired	41 or more credits acquired	
Students 2011/2012	Study Programme	93	3,2%	31,2%	52,7%	12,9%	25,1
	Average of similar Study Programmes	39,1	4,9%	18,5%	35,9%	40,7%	33,5

\*Note: by convention, credits are considered to be obtained by students by 31st October of the year following the year of enrolment.

### D.2.3.2. EXAMS PASSED AND AVERAGE GRADE

The **table** shows number of exams passed and average grade achieved for each course unit in the calendar year 2011. Marks for the exams passed are expressed out of thirty.

The data refers to the course unit code and therefore includes the various branches of the programme divided into channels or sub-groups, divided by letter.

It considers all subjects for which a grade is assigned, and therefore excludes all those to which a pass/fail score is allocated.

Data of the Study Programmes D.M. 270/04 Scienze farmaceutiche applicate (code 0914), Scienze farmaceutiche applicate (code 8518)

	N. of exams passed	Average grade *
00061 BIOCHIMICA	20	27,7
00073 BOTANICA FARMACEUTICA	48	25
00090 CHIMICA ANALITICA	93	25,3
00126 CHIMICA FARMACEUTICA E TOSSICOLOGICA I	8	24,1
00130 CHIMICA GENERALE ED INORGANICA	3	
00148 CHIMICA ORGANICA	68	23,8
00714 MICROBIOLOGIA	6	28,7
00768 PATOLOGIA GENERALE	5	
03033 TOSSICOLOGIA	16	25,3
05181 FISIOLOGIA	3	
10083 ANATOMIA UMANA	65	25,4
11777 CHIMICA FARMACEUTICA E TOSSICOLOGICA II	7	25,6
13622 BIOLOGIA VEGETALE E ANIMALE	104	23,9
13880 FARMACOLOGIA E FARMACOTERAPIA	5	
13952 BIOCHIMICA DELLA NUTRIZIONE	21	27,5
14159 FARMACOLOGIA II	11	27,5
14163 FARMACOLOGIA I	2	
15968 FISICA E MATEMATICA	94	24,2
18040 FARMACOLOGIA GENERALE E FARMACOGNOSIA	4	

	N. of exams passed	Average grade *
18047 TECNOLOGIA E LEGISLAZIONE FARMACEUTICHE	3	
20900 LEGISLAZIONE ED ECONOMIA (C.I.)	13	28,4
21005 BIOCHIMICA (C.I.)	18	26,8
27836 BIOLOGIA (C.I.)	4	
30968 MATEMATICA, FISICA (C.I.)	8	23,6
31567 ANALISI DEI FITTODERIVATI I	22	24,4
31571 ANALISI DEI FITTODERIVATI II	22	25,9
31575 CHIMICA FARMACEUTICA E TOSSICOLOGICA (C.I.)	21	26,9
31578 FARMACOGNOSIA E FITOTERAPIA	29	27,8
31864 ESTRAZIONE DEI FITTODERIVATI (C.I.)	16	28,3
31867 FARMACOLOGIA (C.I.)	19	27,5
31911 DOCUMENTAZIONE E COMUNICAZIONE	4	
31930 CHIMICA DEGLI INQUINANTI (C.I.)	22	26
31936 MICROBIOLOGIA E BIOTOSSINE (C.I.)	8	26,5
31938 CHIMICA TOSSICOLOGICA (C.I.)	6	26,5
31940 ANALISI DEGLI ALIMENTI (C.I.)	8	26,8
31947 TOSSICOLOGIA APPLICATA (C.I.)	10	27,4
32047 FORMULAZIONE FITTICOSMETICA	5	
32241 TECNOLOGIA E LEGISLAZIONE FARMACEUTICHE II (C.I.)	14	27,9
32816 NORMATIVA, SOCIOECONOMIA E BREVETTISTICA FARMACEUTICHE (C.I.)	6	28,2
33531 LE PROFESSIONI NELLE SCIENZE FARMACEUTICHE APPLICATE	5	
34839 TECNOLOGIA E LEGISLAZIONE FARMACEUTICHE I (C.I.)	18	28,4
35755 FARMACOLOGIA I, PATOLOGIA GENERALE (C.I.)	5	
35756 FISIOLOGIA GENERALE, PATOLOGIA GENERALE (C.I.)	23	26,3
43049 CHIMICA GENERALE E INORGANICA	128	24,6
49236 ECONOMIA E MARKETING	4	
55004 FISIOLOGIA GENERALE E DELLA NUTRIZIONE	9	25,3
55007 ANALISI CHIMICO TOSSICOLOGICA II	6	29,7
90317 MICROBIOLOGIA (C.I.)	17	27,6

\* Note: no average grade is given if the number of exams passed is less than or equal to 5.

### D.3. OPINIONS OF GRADUATES AND ATTENDING STUDENTS

*Opinions of graduates on the Study Programme.*

*Tables and graphs provide information on the number of graduates who expressed positive opinions on the Study Programme, focusing on opinions expressed by attending students on course units.*

#### D.3.1. OPINION OF GRADUATES

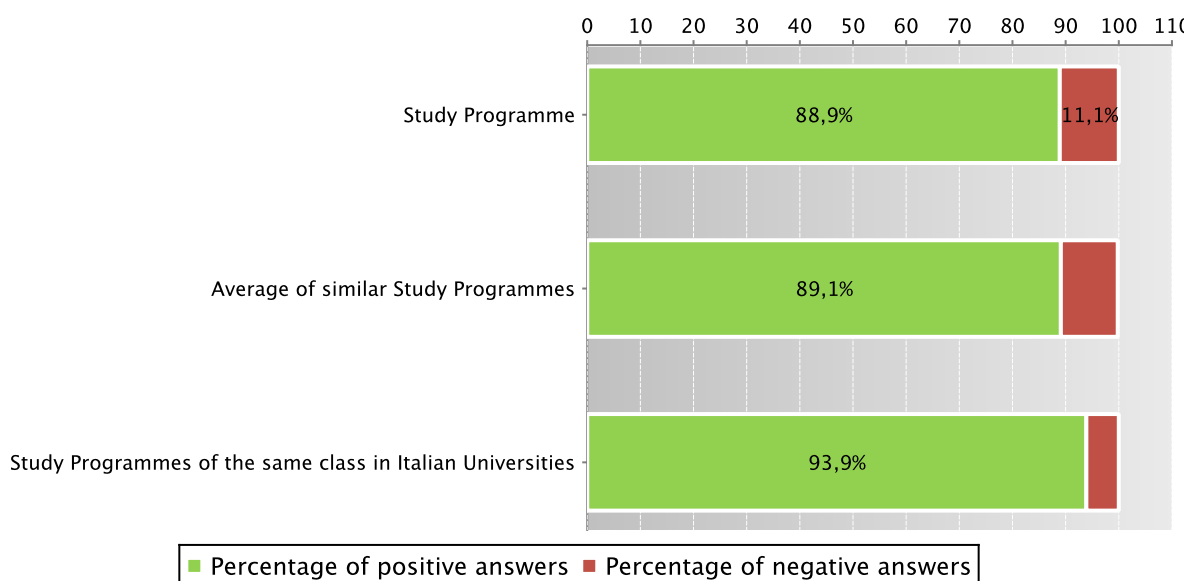
The **graph** shows the percentage of graduates (AlmaLaurea survey) who responded positively to the question: “**Are you generally satisfied with the Study Programme**”.

In addition, the **table** shows the percentage of students who answered “Yes, to the same programme at the university” to the question “Would you register again to the university?”.

The Study Programme data is compared with the average of similar Study Programmes (which belong to the same group), and the average of Study Programmes of the same class of other Italian universities for the graduates of the indicated years.

Graduates in 2012 who responded positively to the question: “Are you generally satisfied with this Study Programme?”

*Data of the Study Programme D.M. 270/04 Scienze farmaceutiche applicate (code 0914)*



*Data of the Study Programme D.M. 270/04 Scienze farmaceutiche applicate (code 0914)*

		N. graduates	Completed Questionnaires	% of positive answers to the question: “Are you generally satisfied with this Study Programme?”	% of answers “yes to the same Programme in the same University” to the question “Would you register again to the University”
2011	Study Programme	3	3		
	Average of similar Study Programmes	21,2	19,8	89,2%	72,1%
	Study Programmes of the same class in Italian Universities	27	25	92,0%	80,0%
2012	Study Programme	18	18	88,9%	55,6%
	Average of similar Study Programmes	25,4	24,3	89,1%	73,0%
	Study Programmes of the same class in Italian Universities	153	148	93,9%	58,8%

Symbols:

(\*) The opinions of the Study Programmes with less than 5 graduates are not shown.

Further information on [Graduates' Profile Report](#).

See data of previous academic years – Study Programme D.M. 509/99 Herbal Medicine (code 0036), Scientific Information on Pharmaceutical Products (code 0037), Environmental Toxicology (code 0540) [paragraph D.5.3.1](#).

### D.3.2 ADDITIONAL DATA ON OPINIONS OF STUDENTS

#### D.3.2.1. OPINION OF ATTENDING STUDENTS

The **graph** shows the percentage of attending students who responded positively to the question in the questionnaire: “Are you generally satisfied with this course unit?” in academic year 2011/2012.

The **table** also shows the number of completed questionnaires.

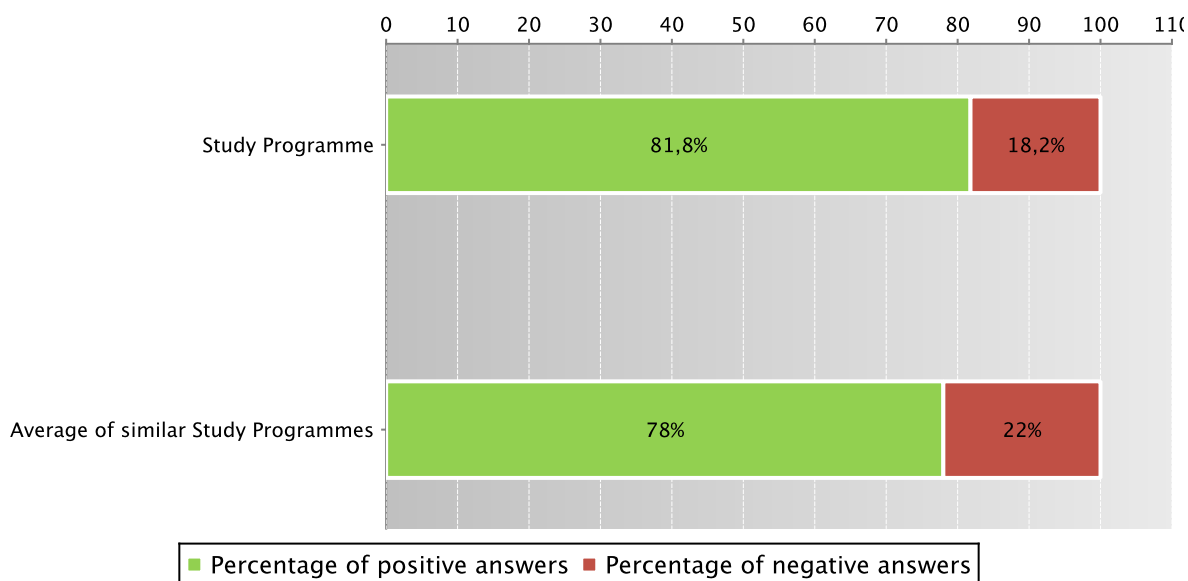
The Study Programme data is compared with the [average of similar Study Programmes \(which belong to the same group\)](#), for the indicated academic years.

The data concerning the students' opinion refers to the opinions of those attending lessons, whether they are enrolled in the current programme or a Study Programme running under pre-reform regulations (under D.M. 509).

For the University of Bologna the survey and subsequently analysis of the opinions of students attending the course is cared by Academic Affairs Division - Quality Assurance Department and Control and Finance Division - Support Planning and Evaluation Department. The overall results and the methods of collection and analysis are described in the document published online on the [Statistical Observatory of the University of Bologna](#) (see the note in the glossary).

Students who responded positively to the question: “Are you generally satisfied with this course unit?” in academic year 2011/2012

*Data of the Study Programmes D.M. 270/04 Scienze farmaceutiche applicate (code 0914), Scienze farmaceutiche applicate (code 8518) and of the Study Programmes D.M. 509/99 Tecniche erboristiche (code 0036), Informazione scientifica sul farmaco (code 0037), Tossicologia dell' ambiente (code 0540)*





Data of the Study Programmes D.M. 270/04 Scienze farmaceutiche applicate (code 0914), Scienze farmaceutiche applicate (code 8518) and of the Study Programmes D.M. 509/99 Tecniche erboristiche (code 0036), Informazione scientifica sul farmaco (code 0037), Tossicologia dell' ambiente (code 0540)

		Number of completed questionnaires	% of positive answers concerning the general satisfaction with the course unit – Question 19
a.y. 2009/2010	Study Programme	1013	82,5%
	Average of similar Study Programmes	1059,4	77,4%
a.y. 2010/2011	Study Programme	1331	84,7%
	Average of similar Study Programmes	1222	76,8%
a.y. 2011/2012	Study Programme	2134	81,8%
	Average of similar Study Programmes	1289,9	78,0%

Symbols:

(\*) When there is a small number of questionnaires, the percentage of positive opinions on overall satisfaction is not presented.

Further information on [Rapporto Opinione degli studenti frequentanti sulle attività didattiche](#) (the content is in Italian).

## D.4. ENTRY INTO THE WORLD OF WORK

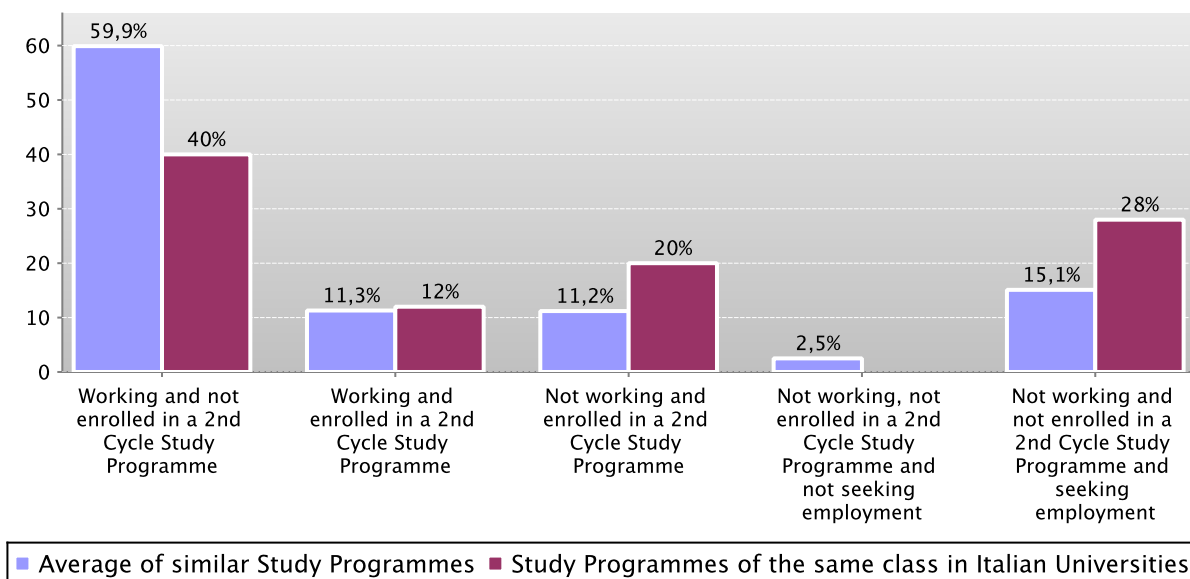
*Employment situation of graduates of the Study Programme.*

*Tables and graphs provide information on the employment situation of graduates one year after graduating.*

### D.4.1. EMPLOYMENT SITUATION

Employment situation of graduates in 2011 one year after graduating

Data of the Study Programme D.M. 270/04 Applied Pharmaceutical Sciences (code 0914)



		N. graduates interviewed	Employment and education situation (1)					Not working, not seeking employment, but following a university programme/traineeship (2)	Degree's appropriateness for the job (referred to the graduates who just work) (3)	
			Working and not enrolled in a 2nd Cycle Study Programme	Working and enrolled in a 2nd Cycle Study Programme	Not working and enrolled in a 2nd Cycle Study Programme	Not working, not enrolled in a 2nd Cycle Study Programme and not seeking employment	Not working and not enrolled in a 2nd Cycle Study Programme and seeking employment		Effective / very effective	Quite effective
Graduation Year 2011	Study Programme	3								
	Average of similar Study Programmes	18,9	59,9%	11,3%	11,2%	2,5%	15,1%	9,9%	73,3%	11,7%
	Study Programmes of the same class in Italian Universities	25	40,0%	12,0%	20,0%		28,0%	8,0%	46,2%	30,8%

See data of previous academic years – Study Programme D.M. 509/99 Herbal Medicine (code 0036), Scientific Information on Pharmaceutical Products (code 0037), Environmental Toxicology (code 0540) [paragraph D.5.4.1](#).

## D.5. INFORMATION ON PRE-REFORM PROGRAMMES (DM 509/99)

### D.5.1. STUDENTS STARTING THEIR UNIVERSITY CAREERS

*Characteristics of incoming students at the beginning of their university careers. Tables and graphs provide information on the number of registered students, focusing on the characteristics of the students, results of any entrance tests and students assigned additional learning requirements.*

#### D.5.1.1. ENROLMENTS AND REGISTRATIONS

Data of enrolments and registrations of the last three academic years are shown in [paragraph D.1.1](#).

#### D.5.1.2. ADDITIONAL DATA ON STUDENTS' STARTING THEIR UNIVERSITY CAREERS

##### D.5.1.2.1. CANDIDATES REGISTERED FOR THE ENTRANCE EXAM

Data of candidates registered for the entrance exam are shown in [paragraph D.1.2.1](#).

##### D.5.1.2.2. INCOMING STUDENTS

Data of incoming students of the last three academic years are shown in [paragraph D.1.2.2](#).

### D.5.2. REGULARITY OF STUDIES

*Insight into the regularity with which the students pass their exams.*

*Graphs and tables provide information on the number of students who leave the programme after the first year and the number of regular graduates, focusing on the number of credits obtained at the end of the first year, the number of exams passed and the average grade achieved for each course unit.*

#### D.5.2.1. STUDENTS LEAVING THE PROGRAMME BETWEEN YEARS 1 AND 2

Data of students leaving the Study Programme of the last three academic years are shown in [paragraph D.2.1](#).

### D.5.2.2. REGULAR GRADUATES

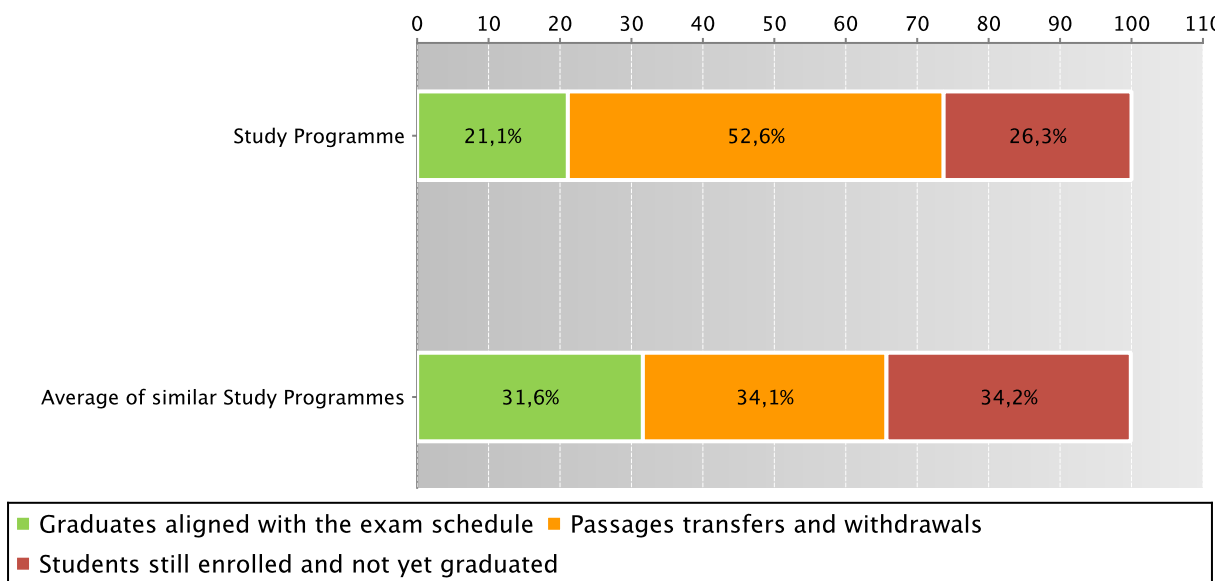
Here you will find information on regular graduates, on how many students, at the end of the regular programme duration, left the programme and how many are still enrolled but not aligned to the exam schedule.

The **graph** and the **table** show the situation concerning **registered students** for the indicated academic year, at the end of the regular duration of the Study Programme, highlighting the percentage of regular graduates, the number of students still enrolled (**not aligned to the exam schedule** and **repeating** students), students who have left the programme (including **passages**, **transfers** and **withdrawals**).

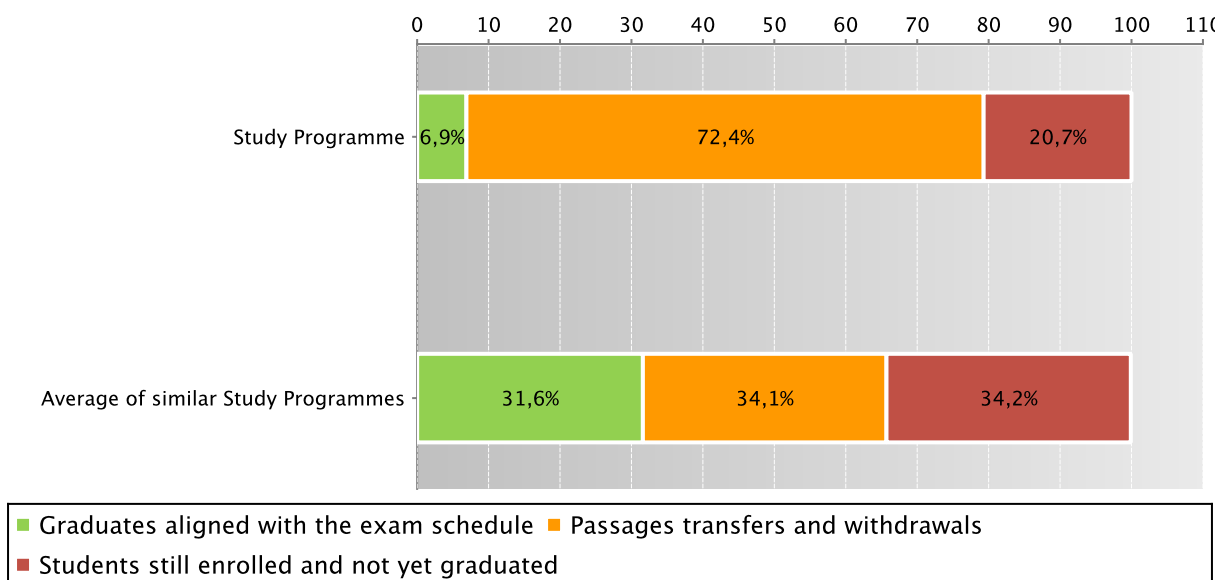
The Study Programme data is compared with the average of **similar Study Programmes** (which belong to the same group) for students registered in the indicated academic years.

Situation of students 2007/2008 at the end of regular duration of the study programme

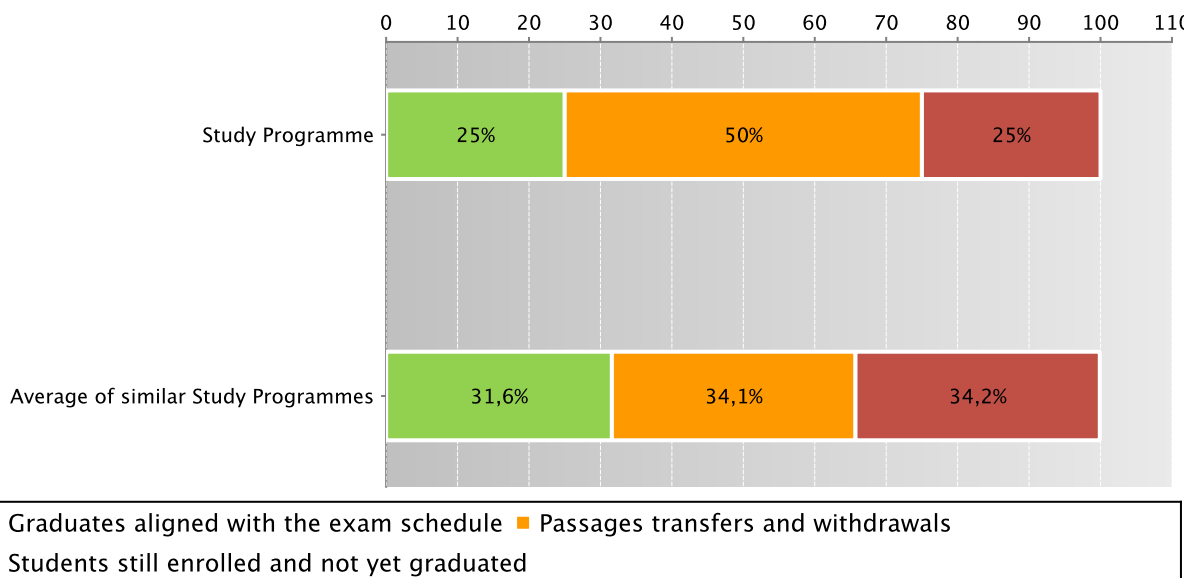
Data of the Study Programme D.M. 509/99 Herbal Medicine (code 0036)



Data of the Study Programme D.M. 509/99 Scientific Information on Pharmaceutical Products (code 0037)



Data of the Study Programme D.M. 509/99 Environmental Toxicology (code 0540)



Data of the Study Programme D.M. 509/99 Herbal Medicine (code 0036)

	Registered students	Regular graduates		Passages transfers and withdrawals		Students still enrolled and not yet graduated		
		N.	%	N.	%	N.	%	
Students 2007/2008	Study Programme	19	4	21,1%	10	52,6%	5	26,3%
	Average of similar Study Programmes	38,5	12,2	31,6%	13,1	34,1%	13,2	34,2%

Data of the Study Programme D.M. 509/99 Scientific Information on Pharmaceutical Products (code 0037)

	Registered students	Regular graduates		Passages transfers and withdrawals		Students still enrolled and not yet graduated		
		N.	%	N.	%	N.	%	
Students 2007/2008	Study Programme	29	2	6,9%	21	72,4%	6	20,7%
	Average of similar Study Programmes	38,5	12,2	31,6%	13,1	34,1%	13,2	34,2%

Data of the Study Programme D.M. 509/99 Environmental Toxicology (code 0540)

		Registered students	Regular graduates		Passages transfers and withdrawals		Students still enrolled and not yet graduated	
			N.	%	N.	%	N.	%
			Study Programme	28	7	25,0%	14	50,0%
Students 2007/2008	Average of similar Study Programmes	38,5	12,2	31,6%	13,1	34,1%	13,2	34,2%

Go back to [D.2.2. Regular graduates](#)

### D.5.2.3. ADDITIONAL DATA ON REGULARITY OF STUDIES

#### D.5.2.3.1. CREDITS OBTAINED BY STUDENTS IN THE 1ST YEAR

Data of credits obtained by students in the 1st year of the last three academic years are shown in paragraph [D.2.3.1.](#)

#### D.5.2.3.2. EXAMS PASSED AND AVERAGE GRADE

Data of exams passed and average grade are shown in paragraph [D.2.3.2.](#)

### D.5.3. OPINIONS OF ATTENDING STUDENTS AND GRADUATES

*Opinions of graduates on the Study Programme.*

*Tables and graphs provide information on the number of graduates who expressed positive opinions on the Study Programme, focusing on opinions expressed by attending students on course units.*

#### D.5.3.1. OPINION OF GRADUATES

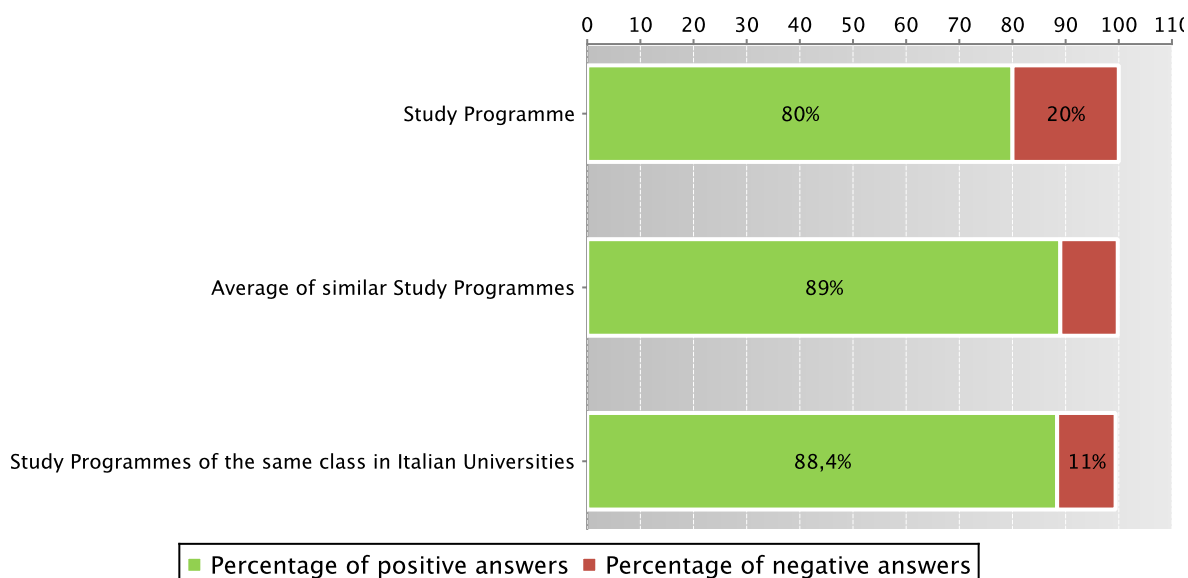
The **graph** shows the percentage of graduates (AlmaLaurea survey) who responded positively to the question: “**Are you generally satisfied with the Study Programme**”.

In addition, the **table** shows the percentage of students who answered “Yes, to the same programme at the university” to the question “Would you register again to the university?”.

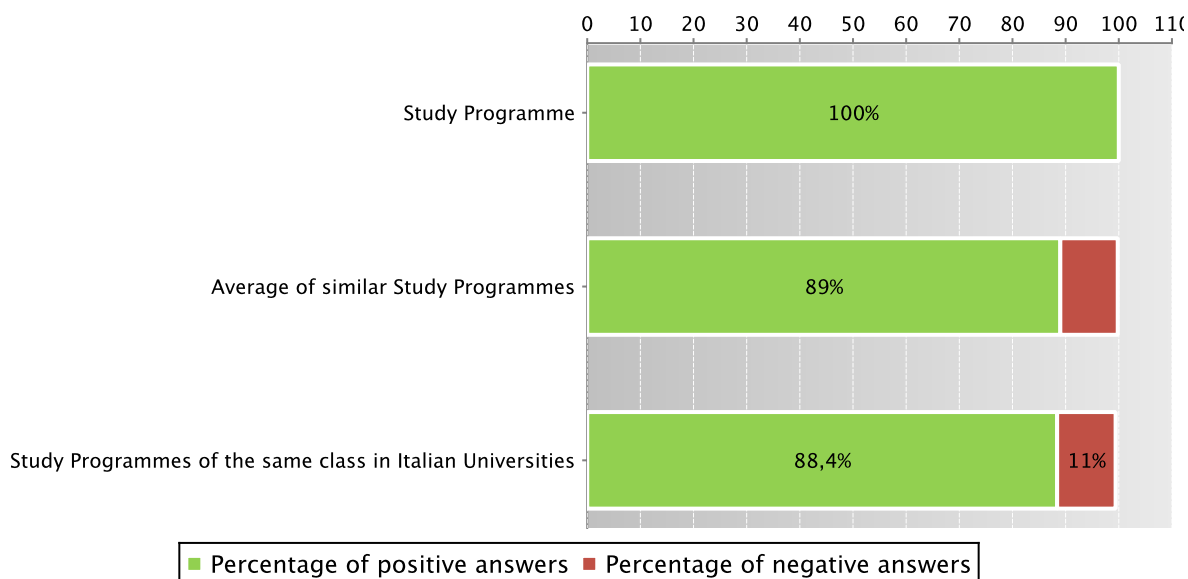
The Study Programme data is compared with the average of similar Study Programmes (which belong to the same group), for the indicated years.

Graduates in 2010 who responded positively to the question: “Are you generally satisfied with this Study Programme?”

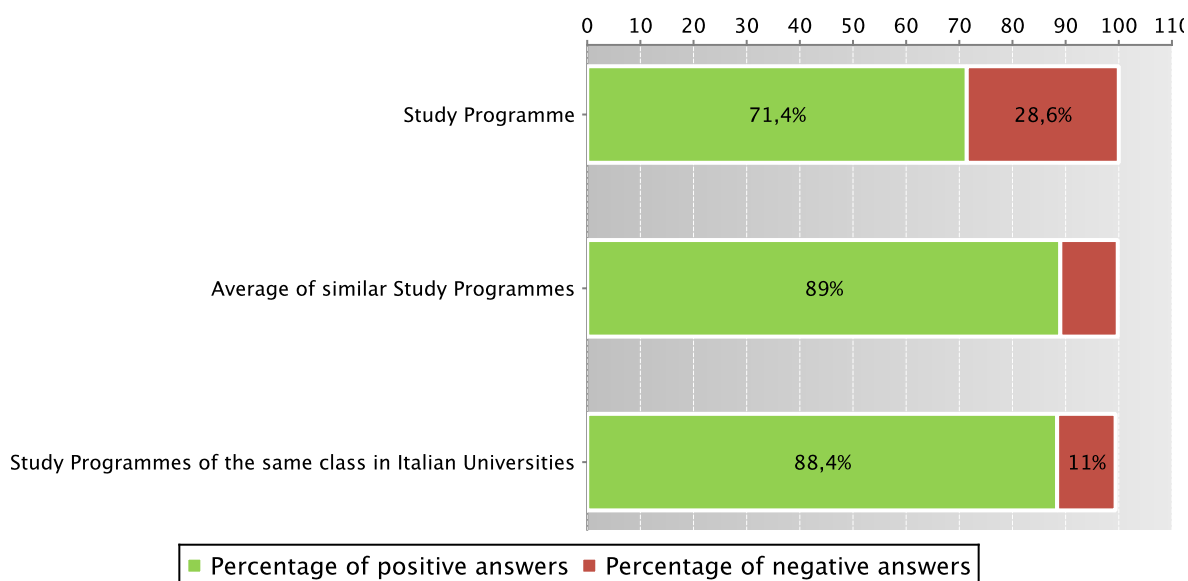
*Data of the Study Programme D.M. 509/99 Tecniche erboristiche (code 0036)*



*Data of the Study Programme D.M. 509/99 Informazione scientifica sul farmaco (code 0037)*



Data of the Study Programme D.M. 509/99 Tossicologia dell' ambiente (code 0540)



Data of the Study Programme D.M. 509/99 Tecniche erboristiche (code 0036)

		N. graduates	Completed Questionnaires	% of positive answers to the question: "Are you generally satisfied with this Study Programme?"	% of answers "yes to the same Programme in the same University" to the question "Would you register again to the University"
2010	Study Programme	10	10	80,0%	60,0%
	Average of similar Study Programmes	31,7	29,2	89,0%	72,8%
	Study Programmes of the same class in Italian Universities	724	682	88,4%	54,7%

Data of the Study Programme D.M. 509/99 Informazione scientifica sul farmaco (code 0037)

		N. graduates	Completed Questionnaires	% of positive answers to the question: "Are you generally satisfied with this Study Programme?"	% of answers "yes to the same Programme in the same University" to the question "Would you register again to the University"
2010	Study Programme	10	8	100,0%	37,5%
	Average of similar Study Programmes	31,7	29,2	89,0%	72,8%
	Study Programmes of the same class in Italian Universities	724	682	88,4%	54,7%

		N. graduates	Completed Questionnaires	% of positive answers to the question: "Are you generally satisfied with this Study Programme?"	% of answers "yes to the same Programme in the same University" to the question "Would you register again to the University"
2010	Study Programme	7	7	71,4%	42,9%
	Average of similar Study Programmes	31,7	29,2	89,0%	72,8%
	Study Programmes of the same class in Italian Universities	724	682	88,4%	54,7%

Symbols:

(\*) The opinions of the Study Programmes with less than 5 graduates are not shown.

Further information on [Graduates' Profile Report](#).

Go back to [D.3.1. Opinion of graduates](#)

### D.5.3.2 ADDITIONAL DATA ON OPINIONS OF STUDENTS

#### D.5.3.2.1. OPINION OF ATTENDING STUDENTS

Data of opinion of attending students of the last three academic years are shown in paragraph [D.3.2.1](#).



## D.5.4. ENTRY INTO THE WORLD OF WORK

*Employment situation of graduates of the Study Programme.*

*Tables and graphs provide information on the employment situation of graduates one year after graduating.*

### D.5.4.1. EMPLOYMENT SITUATION

The paragraph shows the employment situation of graduates one year after graduating.

The data is taken from the [AlmaLaurea](#) reports on the employment situation of graduates.

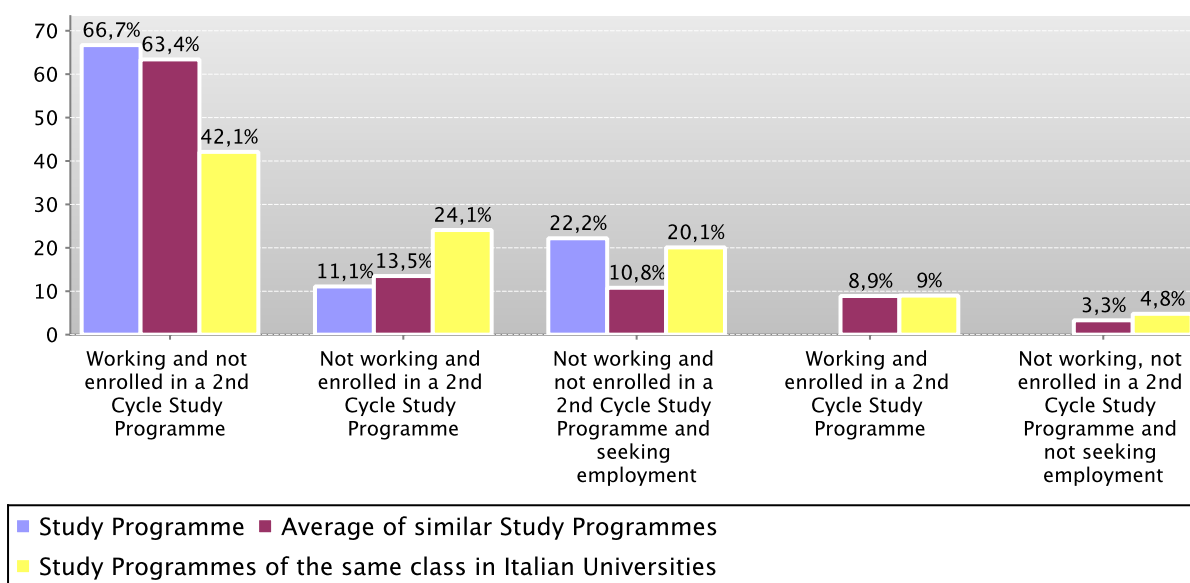
The **graph** shows who is working, who is not working but has enrolled in a Second Cycle study programme, who is not working and is not seeking employment, who is not working but is seeking employment.

In addition, the **table** shows the number of graduates interviewed, the number involved in internships and traineeships and the appropriateness of their degree to the job.

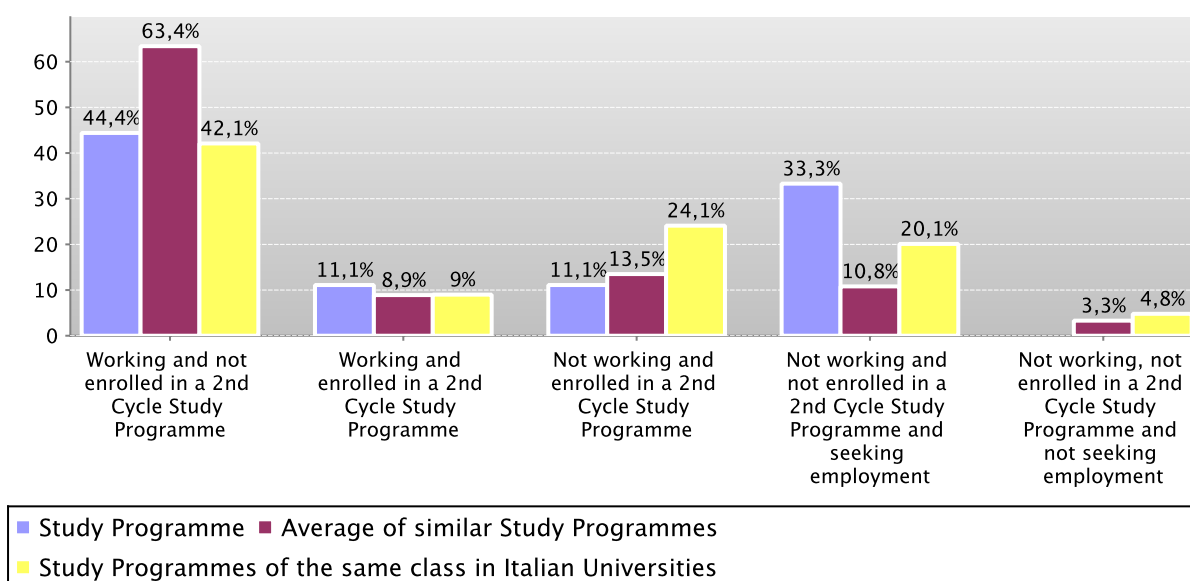
The Study Programme data is compared with the average of **similar Study Programmes (which belong to the same group)** and the average of Study Programmes of the same faculty of other Italian universities for the graduates of the indicated years.

Employment situation of graduates in 2010 one year after graduating

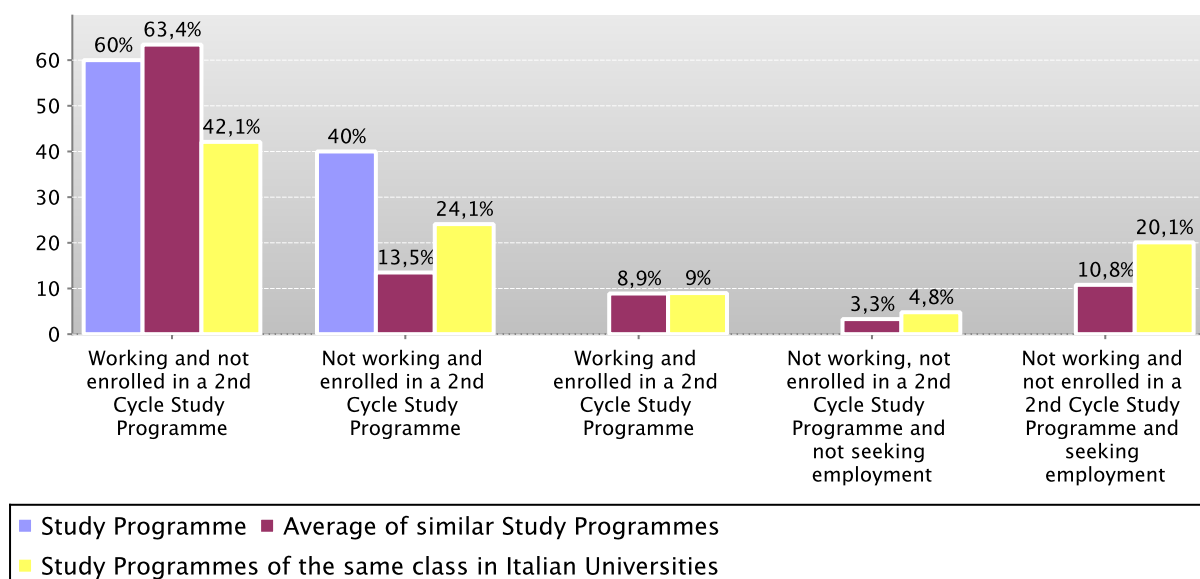
*Data of the Study Programme D.M. 509/99 Herbal Medicine (code 0036)*



*Data of the Study Programme D.M. 509/99 Scientific Information on Pharmaceutical Products (code 0037)*



Data of the Study Programme D.M. 509/99 Environmental Toxicology (code 0540)



Data of the Study Programme D.M. 509/99 Herbal Medicine (code 0036)

		N. graduates interviewed	Employment and education situation (1)					Not working, not seeking employment, but following a university programme/traineeship (2)	Degree's appropriateness for the job (referred to the graduates who just work) (3)	
			Working and not enrolled in a 2nd Cycle Study Programme	Working and enrolled in a 2nd Cycle Study Programme	Not working and enrolled in a 2nd Cycle Study Programme	Not working, not enrolled in a 2nd Cycle Study Programme and not seeking employment	Not working and not enrolled in a 2nd Cycle Study Programme and seeking employment		Effective / very effective	Quite effective
Graduation Year 2009	Study Programme	17	64,7%		23,5%		11,8%	11,8%	54,5%	18,2%
	Average of similar Study Programmes	26	66,8%	8,5%	13,7%	2,8%	8,2%	11,1%	77,6%	10,2%
	Study Programmes of the same class in Italian Universities	712	43,4%	8,7%	26,3%	4,4%	17,3%	15,3%	49,0%	17,7%
Graduation Year 2010	Study Programme	9	66,7%		11,1%		22,2%		33,3%	33,3%
	Average of similar Study Programmes	26,6	63,4%	8,9%	13,5%	3,3%	10,8%	12,2%	74,7%	10,6%
	Study Programmes of the same class in Italian Universities	713	42,1%	9,0%	24,1%	4,8%	20,1%	15,6%	43,3%	22,1%

Data of the Study Programme D.M. 509/99 Scientific Information on Pharmaceutical Products (code 0037)

		N. graduates interviewed	Employment and education situation (1)					Not working, not seeking employment, but following a university programme/traineeship (2)	Degree's appropriateness for the job (referred to the graduates who just work) (3)	
			Working and not enrolled in a 2nd Cycle Study Programme	Working and enrolled in a 2nd Cycle Study Programme	Not working and enrolled in a 2nd Cycle Study Programme	Not working, not enrolled in a 2nd Cycle Study Programme and not seeking employment	Not working and not enrolled in a 2nd Cycle Study Programme and seeking employment		Effective / very effective	Quite effective
Graduation Year 2009	Study Programme	11	72,7%			9,1%	18,2%		87,5%	12,5%
	Average of similar Study Programmes	26	66,8%	8,5%	13,7%	2,8%	8,2%	11,1%	77,6%	10,2%
	Study Programmes of the same class in Italian Universities	712	43,4%	8,7%	26,3%	4,4%	17,3%	15,3%	49,0%	17,7%
Graduation Year 2010	Study Programme	9	44,4%	11,1%	11,1%		33,3%		80,0%	20,0%
	Average of similar Study Programmes	26,6	63,4%	8,9%	13,5%	3,3%	10,8%	12,2%	74,7%	10,6%
	Study Programmes of the same class in Italian Universities	713	42,1%	9,0%	24,1%	4,8%	20,1%	15,6%	43,3%	22,1%

Data of the Study Programme D.M. 509/99 Environmental Toxicology (code 0540)

		N. graduates interviewed	Employment and education situation (1)					Not working, not seeking employment, but following a university programme/traineeship (2)	Degree's appropriateness for the job (referred to the graduates who just work) (3)	
			Working and not enrolled in a 2nd Cycle Study Programme	Working and enrolled in a 2nd Cycle Study Programme	Not working and enrolled in a 2nd Cycle Study Programme	Not working, not enrolled in a 2nd Cycle Study Programme and not seeking employment	Not working and not enrolled in a 2nd Cycle Study Programme and seeking employment		Effective / very effective	Quite effective
Graduation Year 2009	Study Programme	5	40,0%	20,0%	40,0%				33,3%	33,3%
	Average of similar Study Programmes	26	66,8%	8,5%	13,7%	2,8%	8,2%	11,1%	77,6%	10,2%
	Study Programmes of the same class in Italian Universities	712	43,4%	8,7%	26,3%	4,4%	17,3%	15,3%	49,0%	17,7%
Graduation Year 2010	Study Programme	5	60,0%		40,0%			40,0%		66,7%
	Average of similar Study Programmes	26,6	63,4%	8,9%	13,5%	3,3%	10,8%	12,2%	74,7%	10,6%
	Study Programmes of the same class in Italian Universities	713	42,1%	9,0%	24,1%	4,8%	20,1%	15,6%	43,3%	22,1%

Symbols:

(\*) The opinions of the Study Programmes with less than 5 graduates are not shown.

**Notes on the AlmaLaurea report on the employment situation of graduates**

**(1)** "Employment and education situation": the number of employed graduates is the sum of those working and those working who are also enrolled in a 2nd cycle degree programme. The number of those enrolled in a 2nd cycle degree programme is the sum of those who are working and studying and those who are only studying.

**(2)** "Number of those who do not work, who are not seeking employment but who are following a university programme/traineeship": the definition includes those who are enrolled in traineeships, PhD degrees, specialisation schools, Italian "master universitari" (first and second level). The presentation of this data complies with article 2 of D.M. 544 of 31st October 2007, as later provided for in Management Decree no. 61 of 10th June 2008 (transparency requirements).

**(3)** The evaluation of the appropriateness of the degree is obtained by a combination of the requirement of the relative qualification for the job held and the level of usage of the skills learned at university.

Further information on [Graduates' Employment report](#).

Go back to [D.4.1. Employment situation](#)

## E. FIND OUT MORE: THE QUALITY OF YOUR STUDY PROGRAMME

The University of Bologna has identified its objectives as the *personal, cultural and professional growth of students and the improvement of the quality of learning, also in relation to the needs of society* (Strategic Plan 2010-2013).

Students, employers and society as a whole, have the right to effective learning for individual and intellectual growth, to develop critical sense and to prepare for the world of work.

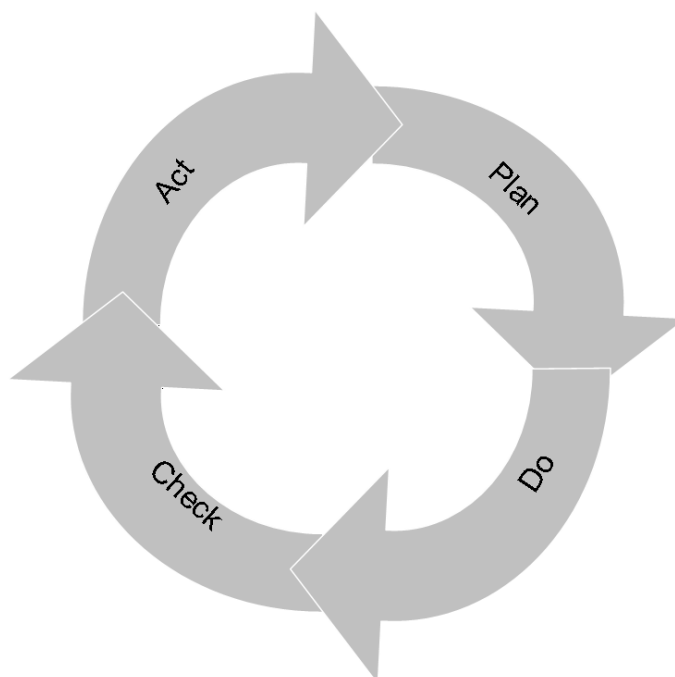
In the Statute and the Strategic Plan 2010-2013 the University of Bologna acknowledges its responsibility in guaranteeing the quality of its study programmes, and for this purpose adopts an "internal quality assurance system".

### The Internal Quality Assurance system

The internal quality assurance system is a set of processes and responsibilities adopted to guarantee the quality of Study Programmes at the University of Bologna.

The guarantee of the quality of a Study Programme is the correspondence of the results achieved with the set objectives, in the following phases:

- Plan: defining the objectives
- Do: implementing the planned actions
- Check: checking that the objectives have been achieved
- Act: planning improvement action



This path responds to the expectations of students, guides teaching behaviour and provides indicators for the assessment of results. Self-assessment is based on the analysis of significant data (for example, the number of students graduating in line with the exam schedule, students' opinions and the employment rates of graduates) and highlights strengths and weaknesses in order to reflect on the achieved results, critically consider one's own working methods and take steps for the continual improvement of the Programme. This path involves all educational stakeholders, including students, in order to make use of the contributions of everyone with first-hand knowledge of the Study Programme. Improvement is therefore a day to day development, concerning all aspects of teaching: from the lesson timetable to the publication of on-line programmes, from classroom management to exam methods, and the actual design of the Programme.

This is what happens in each phase:

- **Planning:** the Study Programme is the result of a proposal from the teaching structures and approved by the Academic Bodies.
- **Management:** Schools, Departments and Study Programmes manage the activities required to ensure teaching. The activities are organised as follows:

What we do	Who does what				
	Professors	Study Programme	Schools	Departments	General Administration
Teaching calendar, lessons programme and exam schedules			x		
Management of financial resources			x	x	
Classroom teaching	x				
Management of classrooms and laboratories			x	x	
Libraries and study rooms			x	x	
Approval of individual study plans		x			
Communication and information		x	x		Academic Affairs Division
Guidance service		x	x		Academic Affairs Division
Internships		x	x		Academic Affairs Division
Administrative services: Student Administration Office					Academic Affairs Division
Administration services: Degree programme office			x		Academic Affairs Division
Study grants and loans ad honorem					Academic Affairs Division
Student mobility: university subsidies and programmes					International Relations Division
Mobility: study grants for dissertations abroad			x		
Mobility: authorisations and recognitions		x			
Other students support services		x	x		x

- Internal assessment:** every Study Programme periodically assesses its own results, evaluating, for example, the number of enrolled students, the number of withdrawing students, student opinions etc.; in this way, the strengths and weaknesses, as well as any implemented improvement actions, are highlighted. This phase is organised as follows:

What we do	Who does what
<p><b>Definition, gathering and publication of evaluation data</b> According to the general guidelines of the University and national and international standards, are defined the tools through which should be evaluated the results (indicators). The survey data to be evaluate are published every year on the Report of the Study Program.</p>	Academic Bodies
<p><b>Self-Assessment</b> The Schools and Study Programmes assess the effectiveness of the previously adopted solutions, analyse the progress of their learning activities and draw up proposals for improvement.</p>	Schools and Study Programmes
<p><b>Internal audit</b></p> <p>The results of the self-assessment process are reviewed in the following phases:</p> <ul style="list-style-type: none"> <li>• <b>Analysis:</b> the University Quality Manager analyses the review documents, considering the ability to identify problems, propose solutions and the overall development of the internal quality assurance system.</li> <li>• <b>Review:</b> The observations on the results obtained and the good practices adopted are examined together with the persons in charge of the Schools and Study Programmes in meetings organised by scientific-disciplinary field. The persons in charge receive the observations and inputs on the areas for development and the actions to be adopted in future to improve results.</li> <li>• <b>Sharing:</b> the conclusions of the review activities are submitted to the Academic Bodies and the University Evaluation Board.</li> </ul>	<p>Quality Manager</p> <p>Vice Rector for Teaching and Education</p> <p>Academic Bodies</p>
<ul style="list-style-type: none"> <li>• <b>Improvement:</b> on the basis of the results of the internal audit, the Schools and Study Programmes plan improvement activities, to ensure that the Study Programmes increasingly respond to the needs of society. The cycle then starts over again, with the definition of actions to be implemented, the results of which are in turn verified, in a continuous path that guarantees the quality of education.</li> </ul>	

## F. GLOSSARY TERMS

### Additional Learning Requirements

Students enrolling in the first year of a first cycle or single cycle degree and who, following the results of the entrance exams established for each study programme, do not possess the knowledge required for access to the programme, are assigned additional learning requirements (OFA).

The OFA are fulfilled by passing an assessment test defined by the programme.

The non-fulfilment of the requirements by the date set by the Academic Bodies and published on the University Portal will lead to the re-enrolment in the first year of the programme.

### AlmaLaurea

AlmaLaurea is an innovative in-line database service of graduates' curriculum vitae (1,620,000 CVs, from 53 Italian universities as of 05/07/2012), which offers a link between graduates, universities and businesses.

Created in 1994 on the initiative of the Statistical Observatory of the University of Bologna, managed by a consortium of Italian universities with the support of the Ministry of Education, University and Research, the purpose AlmaLaurea is to act as a point of contact between businesses and graduates, a reference within universities for anyone (students, businesses, etc...) working in the field of university studies, employment and the condition of young people at different levels.

### Average of similar study programmes (belonging to the same group)

Average of the Study Programmes (which belong to the subject group)

Calculated average which refers to all study programmes of the same cycle which belong to the subject group.

There are four groups, composed as follows:

- **BIOMEDICAL** group: Study Programmes of the Schools of Pharmacy, Biotechnology and Sport Science; Medicine; Agriculture and Veterinary Medicine
- **SCIENTIFIC-TECHNOLOGICAL** group: Study Programmes of the Schools of Engineering and Architecture; Sciences
- **SOCIAL SCIENCES** group: Study Programmes of the Schools of Economics, Management, and Statistics; Law, Political Sciences
- **HUMANITIES** group: Study Programmes of the Schools of Arts, Humanities, and Cultural Heritage; Foreign Languages and Literatures, Interpreting and Translation; Psychology and Education

### CFU University Learning Credits

University Learning Credits (CFU) were introduced under Italian Ministerial Decree no. 509/99 to comply with European legislation, and are a measurement of the volume of learning, including individual study, required of students; generally 1 CFU corresponds to 25 hours of a student's "overall learning effort".

### Class

Degree classes group together study programmes of the same level and with the same key learning outcomes and available learning activities for a given number of credits and in sectors which are identified as indispensable. The features of the classes are set nationally, by Ministerial Decree, and are therefore common to all universities.

### Cohort

Cohort refers to a group of students enrolled in the same academic year.

### Enrolment status

In terms of enrolment, students may be:

- **Regularly enrolled:** students enrolled for as many or fewer years than the legal duration of the study programme, who do not fall into any of the following categories;
- **Not aligned with the exam schedule:** students who, without having graduated, have enrolled in all the years of the study programme and which, for programmes with compulsory attendance, have obtained all attendance certificates;
- **Repeating:** students re-enrolling in the same year of a programme again. Starting from academic year 2009-2010, students who have not fulfilled the assigned additional learning requirements within the deadline have to enrol in the 1st year as repeating students.

### Entrance exam

Enrolment in a study programme may be free access or restricted access.



For all programmes with restricted access, candidates are required to sit an entrance exam and there are a limited number of places available. The entrance exam is a test which is used to draw up a graded list of candidates; students may enrol in the programme according to their place in the list. The methods of managing the call for applications and the list of candidates, including the methods for filling any unclaimed places, may vary from year to year. The test may be specific to a Degree Programme or may be part of a single exam covering several programmes from the same university or from other universities (during the registration the students should indicate their first choice).

The following definitions apply:

**Available places** = the number of places laid down in the call for applications to the Study Programme, or determined by subsequent legal provisions; these exclude any additional places reserved according to special provisions of the programme (e.g. for international study programmes, they do not include places for foreign students selected from other universities; for all programmes with restricted access regulated nationally, these do not include the places reserved for transferring students).

**Number of candidates for the exam** = number of students registered for the exam indicating the study programme as their first choice;

**Number of participants in the exam** = number of students participating in the exam indicating the study programme as their first choice;

**Number of participants in the exam for every available place** = number of students participating in the exam who indicated the study programme as their first choice as a ratio of the number of places available on the programme.

#### First year enrolments

This includes all students enrolled in the first year, including those joining the study programme in its first year through transferrals, as well as those enrolled in the first year but not for the first time (e.g. repeating students).

#### New Careers

Students who start a new university career (excluding transfers) from year one in a second cycle programme.

#### Passages and transfers

**Passage:** when a student applies to move to a different study programme from the one enrolled in the previous year, within the same university.

**Transfer:** when a student transfers from a study programme in one university to any programme in another university.

#### Registered students

Students who begin a career in the Italian University System for the first time and who enrol in the first year (i.e. for whom no previous university careers are recorded) of a First Cycle (L509, L) or Single Cycle programme (LSCU, LMCU)

#### Statistical Observatory of the University of Bologna

The Statistical Observatory was founded in 1997 in order to “provide the university governing bodies with a reliable and timely documentary and monitoring database aiming to promote decision-making processes and planning, particularly of learning activities and other services targeting the student population” (art.1 of the Founding and Operational Regulation). Following the disabling of the Statistical Observatory, as resolved by the Board of Governors on 14 December 2010, from the second semester of academic year 2010-11 the survey and subsequently analysis of the attending students opinion is cared for the University of Bologna by Academic Affairs Division - Quality Assurance Department and Control and Finance Division - Support Planning and Evaluation Department. The overall results and the methods of collection and analysis are described in the document published online on the [Statistical Observatory of the University of Bologna](#).

#### University DataWarehouse

In information service for the managers of the University of Bologna organisational departments which gathers, integrates and reorganises data from various sources and makes it available for analysis and evaluation for the purposes of planning and decision-making.

#### Withdrawal

Suspension of studies by students who do not register in the next academic year, or who drop out from the degree programme.