

2013



ALMA MATER STUDIORUM  
UNIVERSITÀ DI BOLOGNA



School of Pharmacy, Biotechnology and Sport Science  
LAUREA (FIRST CYCLE DEGREE/  
BACHELOR - 180 ECTS) IN EXERCISE  
AND SPORT SCIENCES A.Y. 2013/2014  
Programme Director Prof. Claudio Stefanelli

REPORT

Study Programme Report  
Exercise and Sport Sciences  
Programme ex D.M. 270/04 - Code 8512 - Class L-22  
School of Pharmacy, Biotechnology and Sport Science  
Programme Director Prof. Claudio Stefanelli

Created in collaboration with Teaching and Learning Administrative Area (AFORM – Area della Formazione) – Quality Assurance Unit

Edited by AAGG – University Web Portal Division and CeSLA – Web Technology Division, with MultiPublishing technology

Release date: July 2013

Academic year of reference: 2013/2014

[www.unibo.it/QualityAssuranceEn](http://www.unibo.it/QualityAssuranceEn)

# INDICE

<b>What is the Study Programme Report?</b> .....	1
<b>A. Presentation and prospects</b> .....	2
A.1. Presentation .....	2
A.2. Admission requirements .....	2
A.3. Learning outcomes .....	2
A.4. Career opportunities .....	3
A.5. Opinion of social partners and potential employers .....	4
A.6. Further studies .....	4
<b>B. Teaching and Learning</b> .....	5
B.1. Course Structure Diagram .....	5
B.2. Calendar and lecture timetable .....	5
<b>C. Resources and services</b> .....	6
C.1. Teachers .....	6
C.2. Student services: offices .....	6
C.2.1. Future students .....	6
C.2.2. Enrolled students .....	6
C.2.3. International students .....	6
C.2.4. Graduates .....	6
<b>D. The Study Programme in figures</b> .....	7
D.1. Students starting their university careers .....	7
D.1.1. Enrolments and registrations .....	7
D.1.2. Additional data on students' starting their university careers .....	9
D.1.2.1. Candidates registered for the entrance exam .....	9
D.1.2.2. Incoming students .....	10
D.1.2.3. Additional Learning Requirements .....	12
D.2. Regularity of studies .....	13
D.2.1. Students leaving the Programme between years 1 and 2 .....	13
D.2.2. Regular graduates .....	15
D.2.3. Additional data on regularity of studies .....	16
D.2.3.1. Credits obtained by students in the 1st year .....	16
D.2.3.2. Exams passed and average grade .....	17
D.3. Opinions of graduates and attending students .....	19
D.3.1. Opinion of graduates .....	19
D.3.2. Additional data on opinions of students .....	20
D.3.2.1. Opinion of attending students .....	20
D.4. Entry into the world of work .....	21
D.4.1. Employment situation .....	21
D.5. Information on pre-reform programmes (DM 509/99) .....	22
D.5.1. Students starting their university careers .....	22
D.5.1.1. Enrolments and registrations .....	22
D.5.1.2. Additional data on students' starting their university careers .....	22
D.5.1.2.1. Candidates registered for the entrance exam .....	22
D.5.1.2.2. Incoming students .....	22
D.5.2. Regularity of studies .....	22
D.5.2.1. Students leaving the Programme between years 1 and 2 .....	22
D.5.2.2. Regular graduates .....	23
D.5.2.3. Additional data on regularity of studies .....	23
D.5.2.3.1. Credits obtained by students in the 1st year .....	23
D.5.2.3.2. Exams passed and average grade .....	23

D.5.3. Opinions of attending students and graduates .....	24
D.5.3.1. Opinion of graduates .....	24
D.5.3.2 Additional data on opinions of students .....	24
D.5.3.2.1. Opinion of attending students .....	25
D.5.4. Entry into the world of work .....	25
D.5.4.1. Employment situation .....	25
<b>E. Find out more: the quality of your Study Programme .....</b>	<b>27</b>
<b>F. Glossary terms .....</b>	<b>30</b>

# WHAT IS THE STUDY PROGRAMME REPORT?

## What is the Study Programme Report?

The Study Programme Report provides updated information which is important for the purposes of Quality Assurance and is published annually by the University of Bologna.

The main aspects of the teaching programme are described in detail, with a view to assuring the principle of transparency and promoting self-assessment and continuous improvement processes.

The document provides a concrete overview of the features and results of the Study Programme for students, families, employers and so on.

For example, regarding the current issue of employment, it describes the learning outcomes and career opportunities; it also includes statistics on the percentage of employed graduates (D.4. Employment situation).

The document is organised into five sections and a glossary:

## A. Presentation and prospects

Key information on the Study Programme, including the expected learning outcomes, career opportunities and further studies.

## B. Teaching and Learning

The updated course structure diagram with the full titles and listings of the course units and the latest published lecture timetable.

## C. Resources and services

The list of teaching staff and their relative curricula, the offices (secretariats), services (work placements) and infrastructures (libraries, laboratories) available to students.

## D. The Study Programme in Figures

Key data shows how many students are enrolled, how many have been assigned additional learning requirements, how many drop out after the first year, how many graduate in line with the programme schedule, the opinions of attending and graduating students on the teaching programmes and information concerning graduate employment.

## E. Find out more: the quality of your Study Programme

How the quality system applied to your Study Programme works. The quality system of your Study Programme is a set of processes and responsibilities adopted to guarantee the quality of all Study Programmes at the University of Bologna.

## NOTES:

- Reports are available for all Study Programmes for which it is possible to enrol in the first year in academic year 2012/2013: the information and data provided is as updated as possible.
- Sections A, B and C provide data for the academic year 2012/2013.
- Section D presents data regarding the Study Programmes in the last three academic years.
- The information and data were taken from the University databases and the reports published by the [Statistical Observatory of the University of Bologna](#) and [AlmaLaurea](#), and are updated to **15 June 2012**.

## A. PRESENTATION AND PROSPECTS

*This section presents the key information concerning the Study Programme, including the expected learning outcomes, career opportunities and further studies, updated to the academic year 2013/2014.*

### A.1. PRESENTATION

*This paragraph provides information on the specific learning outcomes of the Study Programme and the curriculum.*

The main aim of the degree is to provide students with scientific knowledge regarding the interdisciplinary sciences involved in human movement, particularly in the areas of technical training, prevention, management and education. In the technical training field, students will gain knowledge regarding theory and teaching methods in different sports practiced at amateur and recreational level. In the preventive field, students will acquire knowledge regarding how to maintain the best physical efficiency in all phases of the human life cycle preventing pathologies caused by inactivity through a healthy and active lifestyle. In the management field, students will gain legal and administrative knowledge regarding physical activity in sports, recreation, education, prevention and industry. In the educational field, students will improve acquire knowledge in order to optimize learning experiences of sports skill for individuals in the developmental years.

### A.2. ADMISSION REQUIREMENTS

*This paragraph provides information on the knowledge required for admission to the Study Programme.*

This information is not available in English at this time.

### A.3. LEARNING OUTCOMES

*This paragraph provides information on the knowledge and skills students will have acquired by the end of the Programme.*

#### KNOWLEDGE AND UNDERSTANDING ABILITY:

1st cycle degree graduates will have basic morphological, dimensional and functional knowledge as regards the human body, in particular regarding the parts of the body involved in movement, the different characteristics of human movement, exercise techniques and training methodologies, the principles of epidemiology, hygiene, traumatology and first aid applied to motor activity, the principles for teaching motor skills to adults and individuals in the developmental age, theory and teaching techniques for introducing individual and team sports and swimming disciplines.

In addition, graduates will have knowledge of teaching, psychological, sociological and legal principles which will enable them to efficiently communicate with practisers, to motivate them appropriately and set activities in the right social-legal context.

The above-listed knowledge and understanding abilities are achieved through lectures, practical activities, seminars and home study, provided for by the course units, especially in the fields of the core curriculum subject areas.

Assessment is accomplished mainly through: oral or written exams, presentation of papers, multiple-choice and/or short open-ended answer tests.

#### ABILITY TO APPLY KNOWLEDGE AND TO UNDERSTAND:

1st cycle degree graduates will be able:

- to use a variety of teaching techniques to demonstrate and convey safe and effective physical exercise, applying the fundamental principles of sports science methods, showing and/or correcting effective exercise performance and using the most suitable generic or specialized equipment and the most appropriate teaching means for the demonstration.
- to assist motor development during the developmental years, using an appropriate teaching/training approach along with exercises selected in relation to knowledge of the main infant, child and adolescent development stages.
- to apply knowledge to manage motor programmes specifically suited to individuals or groups, those who are healthy and with different physical fitness levels, for the purpose of promoting wellbeing, improving lifestyle and preventing postural defects and pathologies caused by sedentariness.
- to instruct and advise individuals or groups in choosing and starting up sports and doing sports at amateur level,
- to handle situations in which first-aid is needed, for example, in the presence of traumas or accidents related to motor or sport activities.

The ability to apply the knowledge and understanding listed above will be achieved through practical activities, internship activities and in preparation of the final paper/project.

The assessments (written and oral exams, reports, etc.) provide for performing specific tasks in which students will demonstrate command over tools, methodologies and judgement skills.

Internship activities are assessed through a report about the experience.

#### JUDGEMENT SKILLS:

1st cycle degree graduates will be able:

- to evaluate the life-style and behaviour of practisers and the risk factors connected to inactivity,
- to motivate practisers to change habits which are negative for their health and to maintain positive lifestyles in order to promote wellbeing as well as to practice fair sport, without using harmful substances.
- to evaluate the appropriateness of the assigned programme in relation to the objectives, the fulfilment of the programme in its parameters which are objectively controllable with technologically-advanced instruments, and the practisers' enjoyment.
- to control the deviation between the assignment and carrying out of the programme and implement corrective and improving actions in order to achieve objectives.

Judgment skills are developed especially through practical activities, organised seminars, preparation of papers related to the different course units provided for by the Degree Programme, the internship and through the activity assigned by the supervising professor in preparation of the final paper/project.

Assessment is carried out through evaluation of the course units of the student's study programme and assessment of the level of autonomy and ability to work, also as part of a group, during the activity assigned as preparation of the final paper/project and internship.

#### COMMUNICATION SKILLS:

1st cycle degree graduates will be able:

- to communicate efficiently so that practisers can get the maximum enjoyment, adapting communication style depending on age, gender, cultural level and social status.
- to explain the reasons, objectives, benefits and risks related to the sports programme or discipline practiced.
- to communicate the results achieved in relation to the pre-defined objectives, encouraging practisers to participate in the assigned programmes.
- to communicate in at least one of the European Union's languages, in addition to Italian.

Communication skills are achieved in different ways in the different course units and evaluated through written or multimedia papers, oral presentations, activities coordinating or participating in work groups, in seminars and text comprehension assessments.

The European Union language is learned through specific course units and related assessments.

Moreover, the final paper/project offers students an additional opportunity of in-depth study, assessing the skills regarding analysis, data processing and communicating the work carried out. This final paper/project involves discussing a paper on subjects which are relevant to the study programme carried before a committee.

#### LEARNING SKILLS

1st cycle degree graduates will be able:

- to apply learning techniques and tools developed, in order to elaborate upon the programme contents studied, to be used both in professional contexts and embarking upon further studies.
- to independently update and expand upon advanced knowledge, based on the specific use and progress of sports sciences.
- to use the scientific information necessary for assessing the soundness of their own professional activities, according to the principles of good practises based on scientific facts.

The learning abilities acquired are a result of the entire period of study, in particular the independent activities provided for during the three-year course, that is, individual and group projects and completion of the final paper/project.

The learning skills are assessed:

- through continuous assessment;
- through the assessment of the self-learning skills matured during the internship.
- in activities related to the final paper/project.

## A.4. CAREER OPPORTUNITIES

*This paragraph provides information on the occupational profile, functions and fields of employment available to graduates of this Programme.*

The course is mainly methodological and envisages the continuation of studies in one of the 2nd cycle degree programmes in the sports-motor sector (classes LM-47, LM-67, LM-68) or for any 1st level Professional Master's degree.

As an alternative, after the appropriate professional training, 1st cycle degree graduates may practice the following professional roles and related functions in the fields of employment here listed:

Professionals in motor and sport activities

Functions:

- Conducting and supervising the implementation of individual and group educational, leisure, and sports motor activity, with the aim of recovering and maintaining psychophysical wellbeing, through the promotion of active lifestyles.
- Conducting and supervising individual and group fitness activities.

Professional openings

Public and private establishments and related to social recreational associationism.

The degree programme project has been submitted to selected external stakeholders in order to receive their opinions and feedbacks on the learning outcomes and the professional profiles.

## A.5. OPINION OF SOCIAL PARTNERS AND POTENTIAL EMPLOYERS

*This paragraph describes the outcome of the consultation with the representative employment and trade organisations.*

This information is not available in English at this time.

## A.6. FURTHER STUDIES

It gives access to second cycle studies (laurea specialistica/magistrale) and master universitario di primo livello.



## B. TEACHING AND LEARNING

*This section describes the updated course structure diagram (for academic year 2013/2014), with the full titles and listings of the course units and the latest published lecture timetable.*

### B.1. COURSE STRUCTURE DIAGRAM

*The link takes you to the Study Programme course structure diagrams. You can also access to each course unit content.*

- [Study plan: all course units in the programme](#)

### B.2. CALENDAR AND LECTURE TIMETABLE

*The links take you to the teaching calendar (exam session and final examination session) and the lecture timetable (in Italian).*

- [Lecture timetable](#)
- [Exam sessions](#)
- [Final examination sessions](#)

## C. RESOURCES AND SERVICES

*This section provides a list of teaching staff and their relative curricula and a description of the services available to students for the academic year 2013/2014.*

### C.1. TEACHERS

*The paragraph lists the lecturers who teach in the Study Programme: from here you can access the personal web pages of each one. Information updated to 28 May 2013 (in Italian).*

#### **Permanent teaching staff:**

<a href="#">Bottari, Carlo</a>	<a href="#">Farné, Roberto</a>	<a href="#">Martelli, Stefano</a>	<a href="#">Stefanelli, Claudio</a>
<a href="#">Canaider, Silvia</a>	<a href="#">Franchi, Marco</a>	<a href="#">Merni, Franco</a>	<a href="#">Tentoni, Claudio</a>
<a href="#">Cecilian, Andrea</a>	<a href="#">Gatta, Giorgio</a>	<a href="#">Moroni, Antonio</a>	<a href="#">Tessari, Alessia</a>
<a href="#">Ciacci, Simone</a>	<a href="#">Leoni, Erica</a>	<a href="#">Raffi, Milena</a>	<a href="#">Toselli, Stefania</a>
<a href="#">Cuconato, Morena</a>	<a href="#">Lorenzini, Antonello</a>	<a href="#">Salvioli, Beatrice</a>	<a href="#">Tuozi, Giovanni</a>
<a href="#">Facchin, Federica</a>	<a href="#">Lubisco, Alessandro</a>	<a href="#">Semprini, Gabriele</a>	
<a href="#">Falconi, Mirella</a>	<a href="#">Maietta Latessa, Pasqualino</a>	<a href="#">Squatrino, Salvatore</a>	

#### **Contract teaching staff:**

<a href="#">Bini, Valentina</a>	<a href="#">Malagoli Lanzoni, Ivan</a>
<a href="#">Cicognani, Olga</a>	<a href="#">Malavasi, Giovanni</a>
<a href="#">Cortesi, Matteo</a>	<a href="#">Negrini, Loredana</a>
<a href="#">Dadati, Mario</a>	<a href="#">Palladino, Leonardo</a>
<a href="#">Di Michele, Rocco</a>	<a href="#">Spiga, Federico</a>
<a href="#">Ferrante, Christian</a>	<a href="#">Vicinelli, Alessandra</a>
<a href="#">Franceschetti, Francesco</a>	

### C.2. STUDENT SERVICES: OFFICES

#### C.2.1. FUTURE STUDENTS

*The link take you to the webpage which provides specific information about the offices and the services for the future students (in Italian).*

- [Future students](#)

#### C.2.2. ENROLLED STUDENTS

*The link take you to the webpage with the information on the offices and the services for the enrolled students (in Italian).*

- [Enrolled students](#)

#### C.2.3. INTERNATIONAL STUDENTS

*The link take you to the webpage with the information on the offices and the services for the international students (in Italian).*

- [International students](#)

#### C.2.4. GRADUATES

*The link take you to the webpage with the information on the offices and the services for the graduates (in Italian).*

- [Graduates](#)

## D. THE STUDY PROGRAMME IN FIGURES

Information on students' starting their university careers, how many students are in line with the regular programme, opinions of students and graduates on the teaching programmes and information concerning graduate employment.

This section provides the data of the last academic years for the Study Programme (SP) and a comparison with similar Study Programmes. The University of Bologna has divided its Study Programmes into four groups:

- **BIOMEDICAL group:** Study Programmes of the Schools of Pharmacy, Biotechnology and Sport Science; Medicine; Agriculture and Veterinary Medicine
- **SCIENTIFIC-TECHNOLOGICAL group:** Study Programmes of the Schools of Engineering and Architecture; Sciences
- **SOCIAL SCIENCES group:** Study Programmes of the Schools of Economics, Management, and Statistics; Law, Political Sciences
- **HUMANITIES group:** Study Programmes of the Schools of Arts, Humanities, and Cultural Heritage; Foreign Languages and Literatures, Interpreting and Translation; Psychology and Education

The section presents the results of the Study Programme for the last three academic years.

Main data shows how many students enrolled, the number of students assigned OEA, how many drop out after the first year, how many graduate in line with the programme schedule, the opinions of attending and graduating students on the teaching programmes and information concerning graduate employment.

The information and data presented in this section, updated to 28 May 2013, were taken from University databases and [AlmaLaurea](#).

Study Programmes may be subject to degree programme system modifications from one academic year to the next, and the data provided in this section may refer to a programme with a slightly different system to the one currently running (such as programme title, course structure diagram and list of lecturers). However, indicatively the data presents the general trend of the Study Programme over the past three years.

Most of the Study Programmes running at the University of Bologna have been reformed in compliance with DM 270/04, most of them from the academic year 2008/2009. In the reports provided for these Programmes, paragraph D.5. refers to the Study Programmes as they were presented prior to the reform.

### D.1. STUDENTS STARTING THEIR UNIVERSITY CAREERS

Characteristics of incoming students at the beginning of their university careers. Tables and graphs provide information on the number of **registered students**, focusing on the characteristics of the students, results of any entrance tests and the students assigned any **additional learning requirements**.

#### D.1.1. ENROLMENTS AND REGISTRATIONS

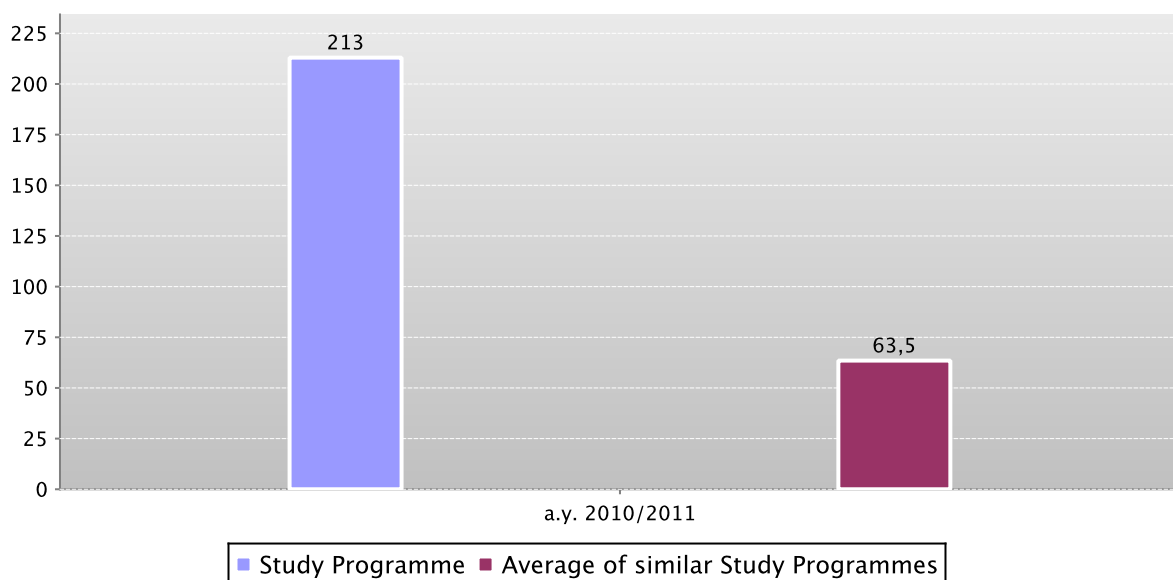
The **graph** shows the number of **students enrolled in the 1st year** compared with the **average of similar Study Programmes** (which belong to the same group).

In addition, the **table** shows the total number of **registered students** and the total number of enrolled students.

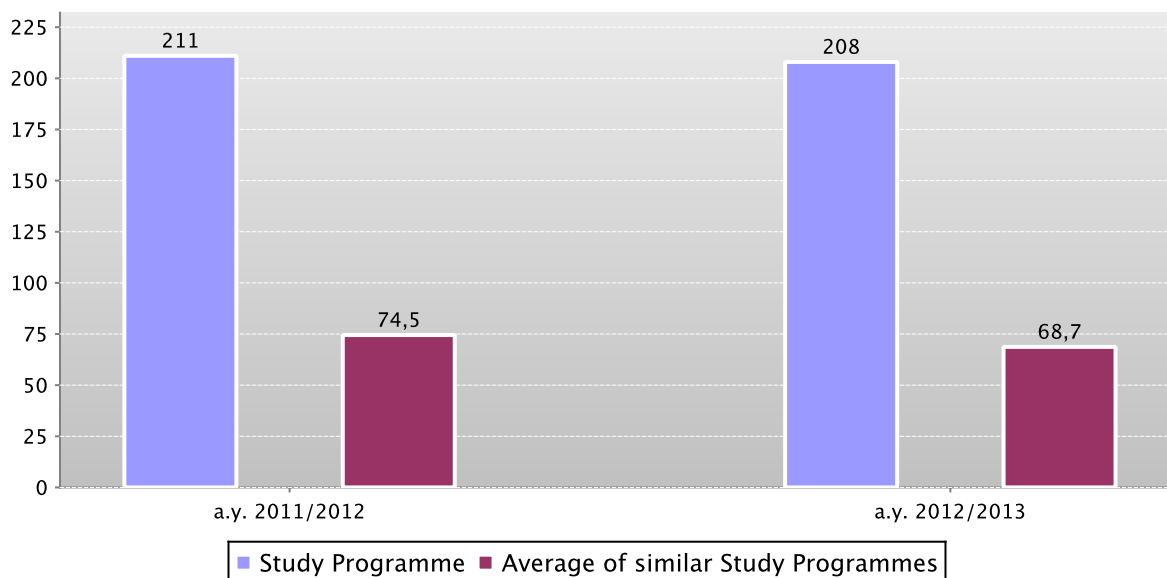
Data of the Study Programme is compared with the average of the Study Programmes of **average of similar Study Programmes** (which belong to the same group) for the indicated academic years.

First year enrolments

Data of the Study Programme D.M. 270/04 Exercise and Sport Sciences (code 8034)



Data of the Study Programme D.M. 270/04 Exercise and Sport Sciences (code 8512)



Data of the Study Programme D.M. 270/04 Exercise and Sport Sciences (code 8034)

	a.y. 2010/2011		
	Registered students	N. first year enrolments	Total N. enrolled students
Study Programme	174	213	565
Average of similar Study Programmes	48,9	63,5	136,8

Data of the Study Programme D.M. 270/04 Exercise and Sport Sciences (code 8512)

	a.y. 2011/2012			a.y. 2012/2013		
	Registered students	N. first year enrolments	Total N. enrolled students	Registered students	N. first year enrolments	Total N. enrolled students
Study Programme	182	211	678	159	208	760
Average of similar Study Programmes	58,1	74,5	106,6	51,8	68,7	104,4

## D.1.2. ADDITIONAL DATA ON STUDENTS' STARTING THEIR UNIVERSITY CAREERS

### D.1.2.1. CANDIDATES REGISTERED FOR THE ENTRANCE EXAM

The number of students sitting the [entrance exam](#) for the Study Programme. Concerns the programmes with restricted access. The methods of managing the call for applications and the list of candidates, including the methods for filling any unclaimed places, may vary from year to year.

The **table** shows the number of places available for the study programme, the number of candidates enrolling for the exam, the number sitting the exam and the percentage of students sitting the exam compared to the number of places available.

For all programmes with restricted access, candidates are required to sit an entrance exam and there are a limited number of places available. The entrance exam is a test which is used to draw up a graded list of candidates; students may enrol in the programme according to their place in the list. The methods of managing the call for applications and the list of candidates, including the methods for filling any unclaimed places, may vary from year to year. The test may be specific to a Degree Programme or may be part of a single exam covering several programmes from the same university or from other universities (during the registration the students should indicate their first choice).

The following definitions apply:

**Available places** = the number of places laid down in the call for applications to the Study Programme, or determined by subsequent legal provisions; these exclude any additional places reserved according to special provisions of the programme (e.g. for international study programmes, they do not include places for foreign students selected from other universities; for all programmes with restricted access regulated nationally, these do not include the places reserved for transferring students).

**Number of candidates for the exam** = number of students registered for the exam indicating the study programme as their first choice;

**Number of participants in the exam** = number of students participating in the exam indicating the study programme as their first choice;

**Number of participants in the exam for every available place** = number of students participating in the exam who indicated the study programme as their first choice as a ratio of the number of places available on the programme.

Data of the Study Programme D.M. 270/04 Exercise and Sport Sciences (code 8034)

	Number of places available (a)	Candidates registered for the exam	Candidates sitting the exam (b)	Number of candidates sitting the exam per place available (b/a)
a.y. 2010/2011	215	684	610	2,8

Data of the Study Programme D.M. 270/04 Exercise and Sport Sciences (code 8512)

	Number of places available (a)	Candidates registered for the exam	Candidates sitting the exam (b)	Number of candidates sitting the exam per place available (b/a)
a.y. 2011/2012	215	707	707	3,3
a.y. 2012/2013	215	707	660	3,1

## D.1.2.2. INCOMING STUDENTS

Geographic origin, type of high school certificate, age and gender of students.

Data shows a homogeneous group of students (**cohort**) which started together their academic career. Students which have **passed** to an other Study Programme, **transferred** from an other university, or registered to a 2nd degree are not included.

The **tables** show the number, geographic origin, gender, age, type and grade of high school certificate of students enrolling in the degree programme.

Data of the Study Programme is compared with the average of the Study Programmes of **average of similar Study Programmes (which belong to the same group)** for the indicated academic years.

Data of the Study Programme D.M. 270/04 Exercise and Sport Sciences (code 8034)

		Registered students	Geographic origin					Gender		Average age of registered students		
			Students coming from the province of the Study Programme site	Students coming from other provinces where Unibo has a site	Students coming from other provinces of Emilia Romagna region	Students coming from other Italian regions	Students coming from abroad	M	F	19 or less	20 - 24	25 or more
Students 2010/2011	Study Programme	174	35,1%	12,6%	32,8%	19,5%		70,1%	29,9%	60,3%	38,5%	1,1%
	Average of similar Study Programmes	48,9	37,0%	25,5%	7,9%	27,5%	2,1%	44,1%	55,9%	62,3%	28,7%	9,1%

		High school certificate					Grade of High school			
		Vocational schools	Technical Colleges	High school specializing in education and in psycho-pedagogical science	High schools specializing in classical studies, modern languages, science education	Other Italian or foreign high schools	Grade ranging from 60 to 69	Grade ranging from 70 to 79	Grade ranging from 80 to 89	Grade ranging from 90 to 100
Students 2010/2011	Study Programme	4,0%	33,3%	1,1%	55,7%	5,7%	37,9%	46,6%	12,6%	2,3%
	Average of similar Study Programmes	9,7%	27,6%	4,5%	49,6%	8,6%	28,2%	33,3%	21,6%	14,8%

Data of the Study Programme D.M. 270/04 Exercise and Sport Sciences (code 8512)

		Registered students	Geographic origin					Gender		Average age of registered students		
			Students coming from the province of the Study Programme site	Students coming from other provinces where Umbro has a site	Students coming from other provinces of Emilia Romagna region	Students coming from other Italian regions	Students coming from abroad	M	F	19 or less	20 - 24	25 or more
Students 2011/2012	Study Programme	182	43,4%	8,2%	35,7%	11,0%	1,6%	73,6%	26,4%	59,3%	40,1%	0,5%
	Average of similar Study Programmes	58,1	36,9%	22,9%	9,7%	27,4%	3,0%	41,8%	58,2%	65,1%	29,1%	5,9%
Students 2012/2013	Study Programme	159	35,2%	18,2%	38,4%	8,2%		79,2%	20,8%	59,1%	39,0%	1,9%
	Average of similar Study Programmes	51,8	35,6%	23,4%	10,3%	28,3%	2,4%	48,4%	51,6%	63,7%	29,7%	6,5%

		High school certificate					Grade of High school			
		Vocational schools	Technical Colleges	High school specializing in education and in psycho-pedagogical science	High schools specializing in classical studies, modern languages, science education	Other Italian or foreign high schools	Grade ranging from 60 to 69	Grade ranging from 70 to 79	Grade ranging from 80 to 89	Grade ranging from 90 to 100
Students 2011/2012	Study Programme	4,9%	29,1%	8,2%	48,9%	8,8%	42,9%	31,9%	18,1%	5,5%
	Average of similar Study Programmes	8,1%	24,2%	9,5%	50,5%	7,7%	26,6%	32,3%	21,6%	17,7%
Students 2012/2013	Study Programme	3,8%	27,7%	5,7%	59,7%	3,1%	35,8%	37,7%	15,7%	8,2%
	Average of similar Study Programmes	8,6%	23,2%	7,2%	54,0%	7,0%	22,1%	34,6%	23,1%	15,0%

### D.1.2.3. ADDITIONAL LEARNING REQUIREMENTS

Students on the programme assigned **additional learning requirements** (OFA). OFA are learning requirements assigned to enrolled students who have not demonstrated the full possession of the entrance requirements. The assessment methods of students' initial preparation and the fulfilment of the OFA are described in the Study Programme Regulations, and may change each year. Students not completing the additional learning requirements are obliged to re-enrol in year 1 as repeating students.

The **table** shows the number of **registered students**, the number of students assigned OFA, the number who fulfilled them, the percentage of students assigned the OFA compared to the number of enrolled students and the percentage fulfilling the OFA compared to those assigned them.

*Data of the Study Programme D.M. 270/04 Exercise and Sport Sciences (code 8034)*

	Registered students (a)	Students assigned OFA (b)	Students who fulfilled OFA (c)	% of students assigned OFA compared to the number of enrolled students (b/a)	% of students fulfilling the OFA compared to number of students assigned (c/b)
Students 2010/2011	174	0			

*Data of the Study Programme D.M. 270/04 Exercise and Sport Sciences (code 8512)*

	Registered students (a)	Students assigned OFA (b)	Students who fulfilled OFA (c)	% of students assigned OFA compared to the number of enrolled students (b/a)	% of students fulfilling the OFA compared to number of students assigned (c/b)
Students 2011/2012	182	1	0	0,5%	0,0%
Students 2012/2013	159	1			

\*Note: At the time of publication of this report the number of students fulfilling the OFA can be measured for a.y. 2009/2010 and a.y. 2010/2011 only.



## D.2. REGULARITY OF STUDIES

*Insight into the regularity with which the students pass their exams.*

*Graphs and tables provide information on the number of students who leave the programme after the first year and the number of regular graduates, focusing on the number of credits obtained at the end of the first year, on the exams passed and average grade achieved for each course unit.*

### D.2.1. STUDENTS LEAVING THE PROGRAMME BETWEEN YEARS 1 AND 2

Here the number of students leaving the Study Programme is shown.

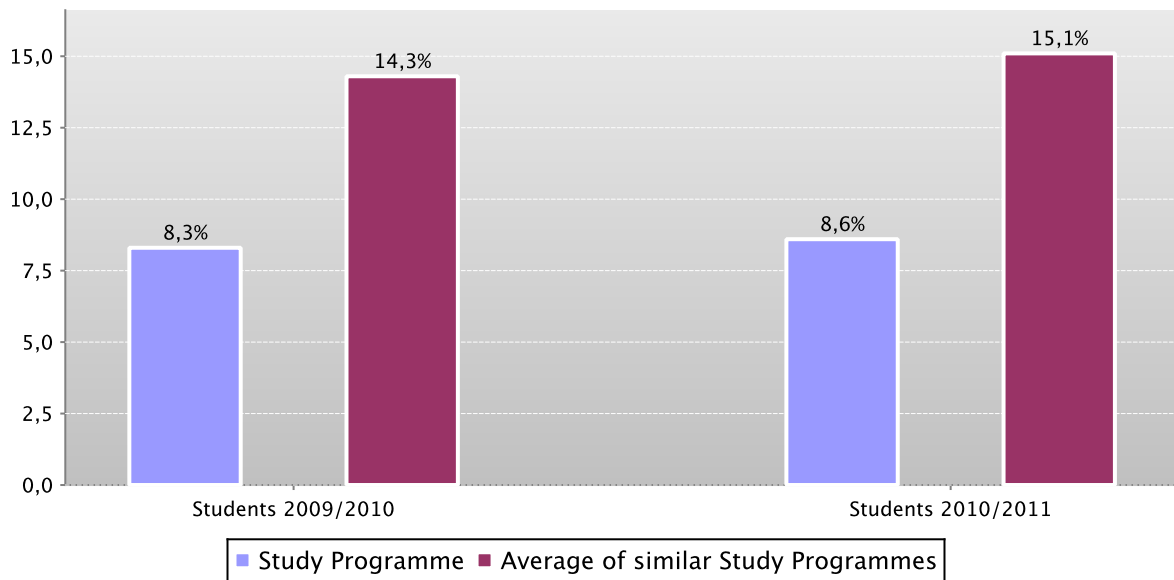
The **graph** shows the percentage of students who leave the programme after the first year compared to the average of similar Study Programmes (belonging to the same group).

The **table** shows the registered students, the percentage of students leaving the programme who pass to a different Study Programme in the same university, transfer to another university or withdraw from studies, as well as the enrolled repeating students and those enrolled in the second year.

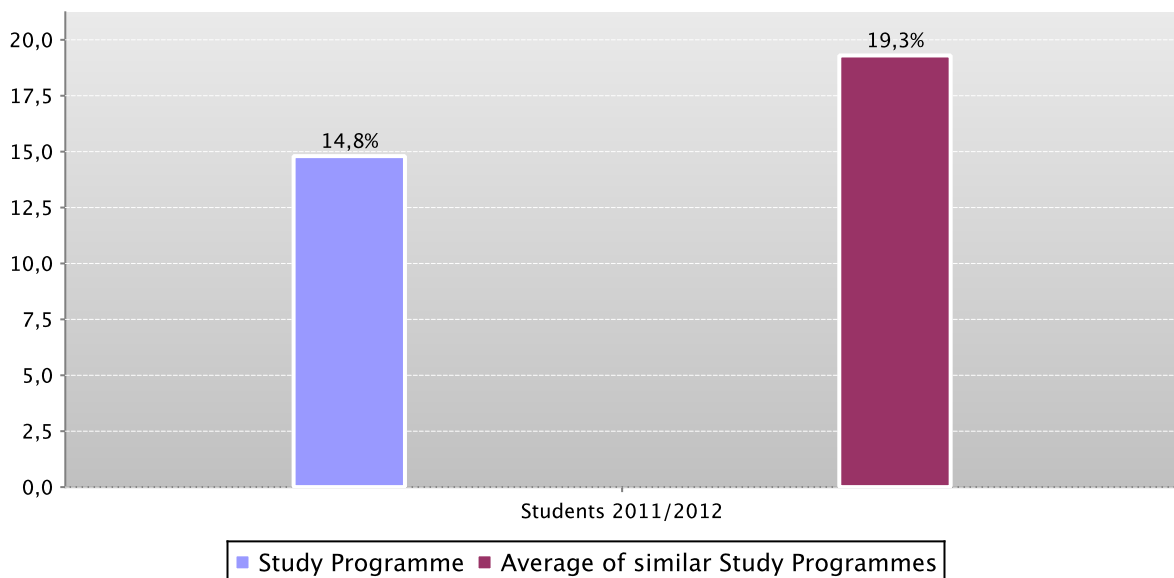
The Study Programme data is compared with the average of similar Study Programmes of (which belong to the same group), for students registered in the indicated academic years.

Percentage of withdrawals between years 1 and 2

*Data of the Study Programme D.M. 270/04 Exercise and Sport Sciences (code 8034)*



*Data of the Study Programme D.M. 270/04 Exercise and Sport Sciences (code 8512)*



Data of the Study Programme D.M. 270/04 Exercise and Sport Sciences (code 8034)

		Registered students	% withdrawals	% passages and transfers	% repeating students	Students enrolled in the second year
Students 2009/2010	Study Programme	180	8,3%	7,2%	0,0%	152
	Average of similar Study Programmes	46,1	14,3%	6,8%	0,3%	36,3
Students 2010/2011	Study Programme	174	8,6%	1,7%	0,0%	156
	Average of similar Study Programmes	48,9	15,1%	9,4%	0,4%	36,8

Data of the Study Programme D.M. 270/04 Exercise and Sport Sciences (code 8512)

		Registered students	% withdrawals	% passages and transfers	% repeating students	Students enrolled in the second year
Students 2011/2012	Study Programme	182	14,8%	3,8%	0,0%	148
	Average of similar Study Programmes	58,1	19,3%	12,9%	0,4%	39,1

### D.2.2. REGULAR GRADUATES

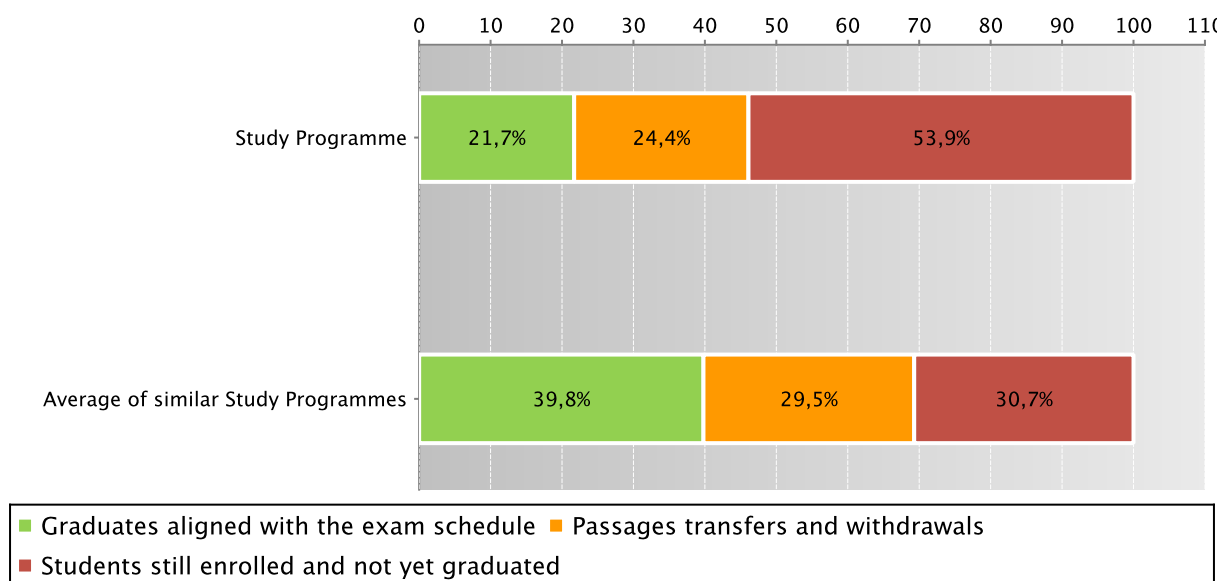
Here you will find information on regular graduates, on how many students, at the end of the regular programme duration, left the programme and how many are still enrolled but **not aligned to the exam schedule**.

The **graph** and the **table** show the situation concerning **registered students** for the indicated academic year, at the end of the regular duration of the Study Programme, highlighting the percentage of regular graduates, the number of students still enrolled (**not aligned to the exam schedule** and **repeating students**), students who have left the programme (including **passages**, **transfers** and **withdrawals**).

The Study Programme data is compared with the average of **similar Study Programmes** (which belong to the same group) for students registered in the indicated academic years.

Situation of students 2009/2010 at the end of regular duration of the study programme

Data of the Study Programme D.M. 270/04 Exercise and Sport Sciences (code 8034)



Data of the Study Programme D.M. 270/04 Exercise and Sport Sciences (code 8034)

	Registered students	Regular graduates		Passages transfers and withdrawals		Students still enrolled and not yet graduated		
		N.	%	N.	%	N.	%	
Students 2008/2009	Study Programme	174	56	32,2%	39	22,4%	79	45,4%
	Average of similar Study Programmes	42,7	16,4	38,4%	12,8	30,1%	13,4	31,4%
Students 2009/2010	Study Programme	180	39	21,7%	44	24,4%	97	53,9%
	Average of similar Study Programmes	46,1	18,3	39,8%	13,6	29,5%	14,2	30,7%

See data of previous academic years – Study Programme D.M. 509/99 Exercise and Sport Sciences (code 0107) paragraph D.5.2.2.

### D.2.3. ADDITIONAL DATA ON REGULARITY OF STUDIES

#### D.2.3.1. CREDITS OBTAINED BY STUDENTS IN THE 1ST YEAR

This offers an insight into how regularly students pass their exams.

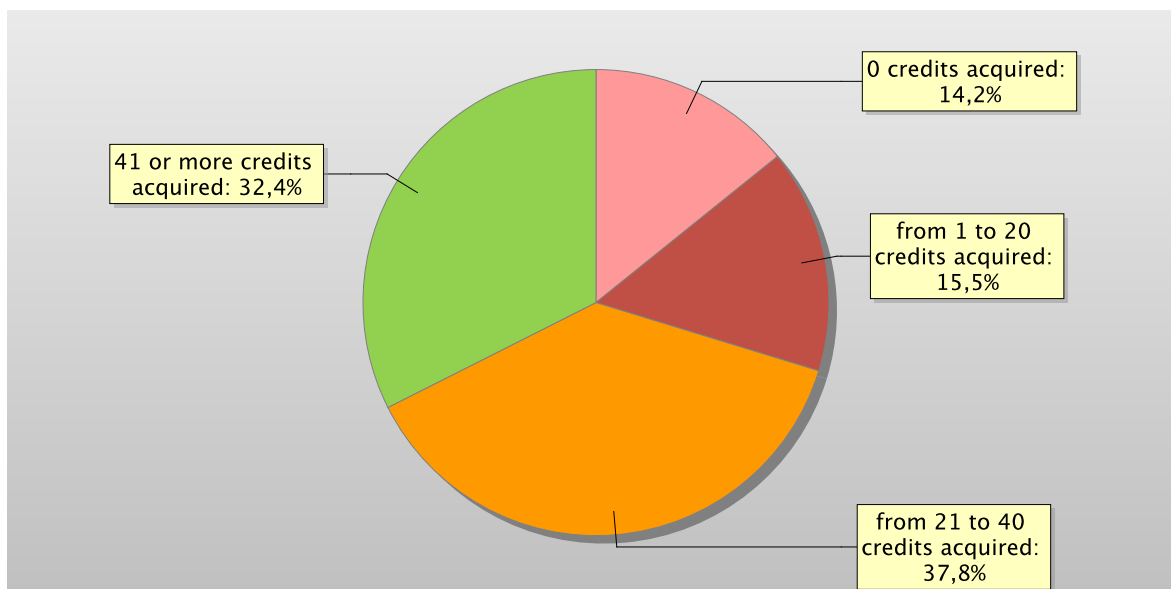
The **graph** shows the distribution of the students according to the number of **credits** obtained at the end of the first year.

In addition, the **table** shows the number of students registered at the second year and average **credits** obtained during the first year.

The Study Programme data is compared with the average of **similar Study Programmes** (which belong to the same group) for the indicated academic years.

Distribution of the students in 2011/2012 according to the number of credits obtained at the end of the first year\*

Data of the Study Programme D.M. 270/04 Exercise and Sport Sciences (code 8512)



Data of the Study Programme D.M. 270/04 Exercise and Sport Sciences (code 8034)

		Students enrolled in the 2nd year	% students with *				Average credits per student
			0 credits acquired	from 1 to 20 credits acquired	from 21 to 40 credits acquired	41 or more credits acquired	
Students 2009/2010	Study Programme	152	6,6%	21,7%	52,0%	19,7%	27,9
	Average of similar Study Programmes	36,3	3,4%	18,7%	40,7%	37,2%	33,4
Students 2010/2011	Study Programme	156	2,6%	10,9%	59,6%	26,9%	34,1
	Average of similar Study Programmes	36,8	2,3%	17,5%	40,2%	40,0%	34,8

Data of the Study Programme D.M. 270/04 Exercise and Sport Sciences (code 8512)

		Students enrolled in the 2nd year	% students with *				Average credits per student
			0 credits acquired	from 1 to 20 credits acquired	from 21 to 40 credits acquired	41 or more credits acquired	
Students 2011/2012	Study Programme	148	14,2%	15,5%	37,8%	32,4%	28,2
	Average of similar Study Programmes	39,1	4,9%	18,5%	35,9%	40,7%	33,5

\*Note: by convention, credits are considered to be obtained by students by 31st October of the year following the year of enrolment.

#### D.2.3.2. EXAMS PASSED AND AVERAGE GRADE

The **table** shows number of exams passed and average grade achieved for each course unit in the calendar year 2011. Marks for the exams passed are expressed out of thirty.

The data refers to the course unit code and therefore includes the various branches of the programme divided into channels or sub-groups, divided by letter.

It considers all subjects for which a grade is assigned, and therefore excludes all those to which a pass/fail score is allocated.

Data of the Study Programmes D.M. 270/04 Scienze motorie (code 8034), Scienze delle attività motorie e sportive (code 8512)

	N. of exams passed	Average grade *
00061 BIOCHIMICA	1	
00914 STATISTICA	90	26,1
02207 PSICOLOGIA GENERALE	91	25,3
03134 STORIA DELL'EDUCAZIONE FISICA	9	27,8
03857 SOCIOLOGIA GENERALE	118	22,3
05750 BIOMECCANICA	3	
07309 DIRITTO PUBBLICO	45	25,4
08069 TRAUMATOLOGIA	1	
14030 ANTROPOMETRIA ED ERGONOMIA	165	24,3
15559 TEORIA E METODOLOGIA DEL MOVIMENTO UMANO	144	26,8
20135 IGIENE GENERALE ED APPLICATA	1	
20629 PRIMO SOCCORSO	3	
22366 DIRITTO PRIVATO DELLO SPORT	52	24,1
22367 PEDAGOGIA DEL GIOCO E DELLO SPORT	3	
24234 NUTRIZIONE UMANA	4	
30595 BIOCHIMICA E NUTRIZIONE UMANA C. I.	126	25
30597 BIOMECCANICA CON ELEMENTI DI FISICA APPLICATA	12	20
30614 DIRITTO PUBBLICO, PRIVATO E ORGANIZZAZIONE DELLO SPORT C. I.	127	25,3
30640 PSICOLOGIA GENERALE ED EDUCATIVA C. I.	85	25,7

	N. of exams passed	Average grade *
30643 PEDAGOGIA GENERALE E DEL GIOCO C. I.	151	25,5
30686 IGIENE, PRIMO SOCCORSO E TRAUMATOLOGIA C. I.	142	26,1
30748 ANATOMIA UMANA C. I.	135	25,7
30835 FISIOLOGIA DELL'ESERCIZIO	3	
30849 METODOLOGIA DELL'ALLENAMENTO	9	23,1
30859 INQUADRAMENTO GENERALE E PALLAVOLO	3	
30870 RUGBY E BASKET'	1	
31323 FISIOLOGIA , TEORIA E METODOLOGIA DELL'ALLENAMENTO C. I.	86	23,7
31337 FITNESS E ATTIVITÀ MOTORIE PER LA SALUTE	149	25,2
31345 T.T.D. DELL'ATTIVITÀ MOTORIA PER L'ETÀ EVOLUTIVA E PREVENTIVA	168	26,5
31354 TEORIA E DIDATTICA DEGLI SPORT NATATORI	177	25,5
31360 FISIOLOGIA UMANA C. I.	89	23,1
31361 TEORIA E DIDATTICA DEGLI SPORT INDIVIDUALI 1 C. I.	22	26,2
31362 INQUADRAMENTO GENERALE E ATLETICA LEGGERA	1	
31363 TEORIA E DIDATTICA DEGLI SPORT INDIVIDUALI 2 C. I.	32	26
31365 TEORIA E DIDATTICA DEGLI SPORT INDIVIDUALI 3 C. I.	27	26,6
31367 TEORIA E DIDATTICA DEGLI SPORT INDIVIDUALI 4 C. I.	60	26,3
31368 TENNIS E GINNASTICA ARTISTICA	4	
31370 SCI E GINNASTICA ARTISTICA	2	
31371 TEORIA E DIDATTICA DEGLI SPORT INDIVIDUALI 5 C. I.	31	25,9
31439 TEORIA E DIDATTICA DEGLI SPORT DI SQUADRA 4 C. I.	129	26,6
31443 BASKET E CALCIO	1	
31449 TEORIA E DIDATTICA DEGLI SPORT DI SQUADRA 5 C. I.	32	26,2
31452 TEORIA E DIDATTICA DEGLI SPORT DI SQUADRA 6 C. I.	33	26,4
38368 CANOA	36	27,9
38650 BASEBALL	55	29,4
38651 EDUCATORE SPORTIVO	13	24
38700 TENNIS TAVOLO	22	28,5
40227 PEDAGOGIA DEL CORPO	13	27,7
49124 TEORIA DELL'ALLENAMENTO	9	22,6
57113 BIOLOGIA APPLICATA	30	23,5
66049 BIOLOGIA APPLICATA E BIOMECCANICA C.I.	140	25,2
67978 BIOLOGIA DELL'INVECCHIAMENTO E PSICOBIOLOGIA C. I.	13	27,7
67979 CORPO, MOVIMENTO E SPORT C. I.	18	27,3
68401 PEDAGOGIA DEL CORPO	58	27,4
68402 EDUCATORE SPORTIVO	43	25,2
68403 PSICOBIOLOGIA	12	26
68404 BIOLOGIA DELL'INVECCHIAMENTO	36	26,9

\* Note: no average grade is given if the number of exams passed is less than or equal to 5.

### D.3. OPINIONS OF GRADUATES AND ATTENDING STUDENTS

*Opinions of graduates on the Study Programme.*

*Tables and graphs provide information on the number of graduates who expressed positive opinions on the Study Programme, focusing on opinions expressed by attending students on course units.*

#### D.3.1. OPINION OF GRADUATES

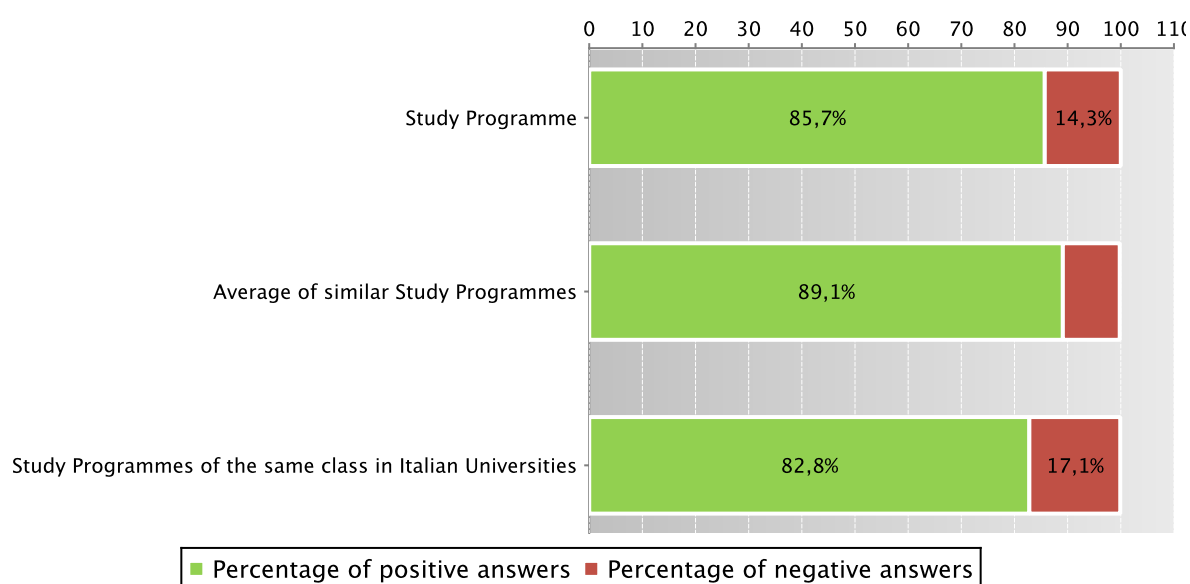
The **graph** shows the percentage of graduates (AlmaLaurea survey) who responded positively to the question: “**Are you generally satisfied with the Study Programme**”.

In addition, the **table** shows the percentage of students who answered “Yes, to the same programme at the university” to the question “Would you register again to the university?”.

The Study Programme data is compared with the average of similar Study Programmes (which belong to the same group), and the average of Study Programmes of the same class of other Italian universities for the graduates of the indicated years.

Graduates in 2012 who responded positively to the question: “Are you generally satisfied with this Study Programme?”

*Data of the Study Programme D.M. 270/04 Scienze motorie (code 8034)*



*Data of the Study Programme D.M. 270/04 Scienze motorie (code 8034)*

		N. graduates	Completed Questionnaires	% of positive answers to the question: “Are you generally satisfied with this Study Programme?”	% of answers “yes to the same Programme in the same University” to the question “Would you register again to the University”
2011	Study Programme	41	39	97,4%	71,8%
	Average of similar Study Programmes	21,2	19,8	89,2%	72,1%
	Study Programmes of the same class in Italian Universities	249	216	88,4%	65,7%
2012	Study Programme	59	56	85,7%	64,3%
	Average of similar Study Programmes	25,4	24,3	89,1%	73,0%
	Study Programmes of the same class in Italian Universities	931	812	82,8%	65,3%

Symbols:

(\*) The opinions of the Study Programmes with less than 5 graduates are not shown.

Further information on [Graduates' Profile Report](#).

See data of previous academic years – Study Programme D.M. 509/99 Exercise and Sport Sciences (code 0107) [paragraph D.5.3.1](#).

### D.3.2 ADDITIONAL DATA ON OPINIONS OF STUDENTS

#### D.3.2.1. OPINION OF ATTENDING STUDENTS

The **graph** shows the percentage of attending students who responded positively to the question in the questionnaire: “Are you generally satisfied with this course unit?” in academic year 2011/2012.

The **table** also shows the number of completed questionnaires.

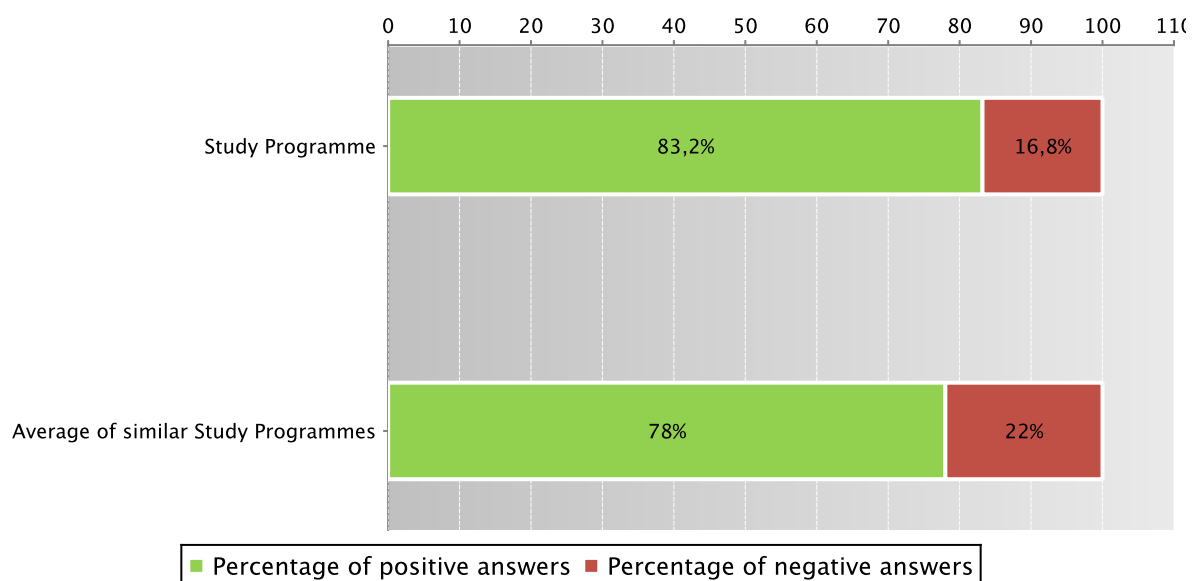
The Study Programme data is compared with the [average of similar Study Programmes \(which belong to the same group\)](#), for the indicated academic years.

The data concerning the students' opinion refers to the opinions of those attending lessons, whether they are enrolled in the current programme or a Study Programme running under pre-reform regulations (under D.M. 509).

For the University of Bologna the survey and subsequently analysis of the opinions of students attending the course is cared by Academic Affairs Division - Quality Assurance Department and Control and Finance Division - Support Planning and Evaluation Department. The overall results and the methods of collection and analysis are described in the document published online on the [Statistical Observatory of the University of Bologna](#) (see the note in the glossary).

Students who responded positively to the question: “Are you generally satisfied with this course unit?” in academic year 2011/2012

*Data of the Study Programmes D.M. 270/04 Scienze motorie (code 8034), Scienze delle attivita' motorie e sportive (code 8512) and of the Study Programme D.M. 509/99 Scienze motorie (code 0107)*





Data of the Study Programmes D.M. 270/04 Scienze motorie (code 8034), Scienze delle attività motorie e sportive (code 8512) and of the Study Programme D.M. 509/99 Scienze motorie (code 0107)

		Number of completed questionnaires	% of positive answers concerning the general satisfaction with the course unit – Question 19
a.y. 2009/2010	Study Programme	1386	76,4%
	Average of similar Study Programmes	1059,4	77,4%
a.y. 2010/2011	Study Programme	1658	79,9%
	Average of similar Study Programmes	1222	76,8%
a.y. 2011/2012	Study Programme	1915	83,2%
	Average of similar Study Programmes	1289,9	78,0%

Symbols:

(\*) When there is a small number of questionnaires, the percentage of positive opinions on overall satisfaction is not presented.

Further information on [Rapporto Opinione degli studenti frequentanti sulle attività didattiche](#) (the content is in Italian).

## D.4. ENTRY INTO THE WORLD OF WORK

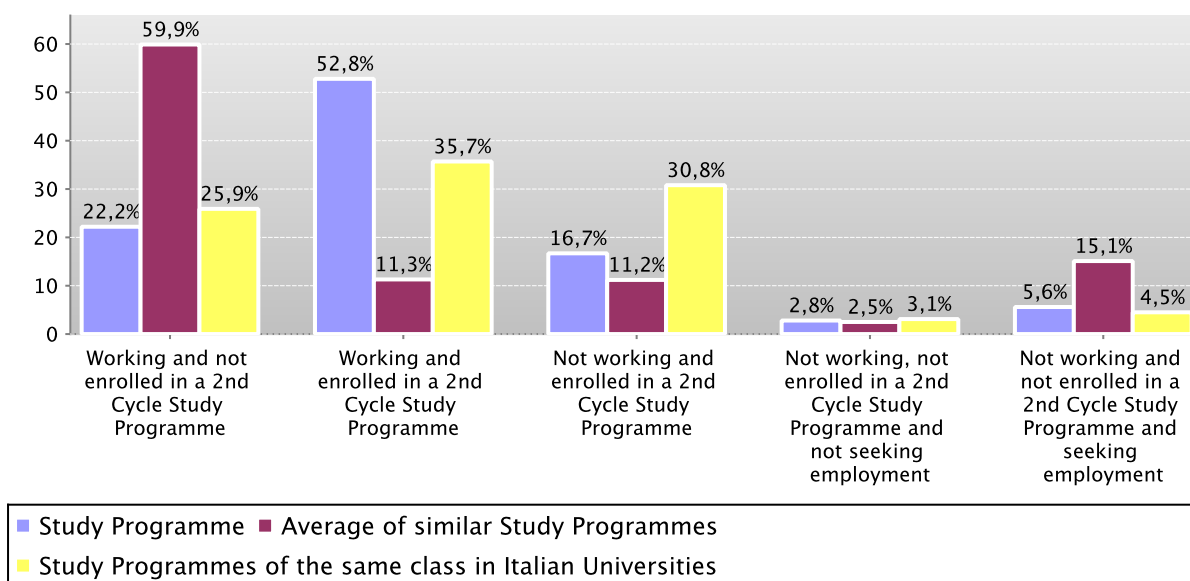
*Employment situation of graduates of the Study Programme.*

*Tables and graphs provide information on the employment situation of graduates one year after graduating.*

### D.4.1. EMPLOYMENT SITUATION

Employment situation of graduates in 2011 one year after graduating

Data of the Study Programme D.M. 270/04 Exercise and Sport Sciences (code 8034)



		N. graduates interviewed	Employment and education situation (1)					Not working, not seeking employment, but following a university programme/traineeship (2)	Degree's appropriateness for the job (referred to the graduates who just work) (3)	
			Working and not enrolled in a 2nd Cycle Study Programme	Working and enrolled in a 2nd Cycle Study Programme	Not working and enrolled in a 2nd Cycle Study Programme	Not working, not enrolled in a 2nd Cycle Study Programme and not seeking employment	Not working and not enrolled in a 2nd Cycle Study Programme and seeking employment		Effective / very effective	Quite effective
Graduation Year 2011	Study Programme	36	22,2%	52,8%	16,7%	2,8%	5,6%	16,7%	61,5%	30,8%
	Average of similar Study Programmes	18,9	59,9%	11,3%	11,2%	2,5%	15,1%	9,9%	73,3%	11,7%
	Study Programmes of the same class in Italian Universities	224	25,9%	35,7%	30,8%	3,1%	4,5%	21,4%	65,2%	23,0%

See data of previous academic years – Study Programme D.M. 509/99 Exercise and Sport Sciences (code 0107) [paragraph D.5.4.1.](#)

## D.5. INFORMATION ON PRE-REFORM PROGRAMMES (DM 509/99)

### D.5.1. STUDENTS STARTING THEIR UNIVERSITY CAREERS

*Characteristics of incoming students at the beginning of their university careers. Tables and graphs provide information on the number of registered students, focusing on the characteristics of the students, results of any entrance tests and students assigned additional learning requirements.*

#### D.5.1.1. ENROLMENTS AND REGISTRATIONS

Data of enrolments and registrations of the last three academic years are shown in [paragraph D.1.1.](#)

#### D.5.1.2. ADDITIONAL DATA ON STUDENTS' STARTING THEIR UNIVERSITY CAREERS

##### D.5.1.2.1. CANDIDATES REGISTERED FOR THE ENTRANCE EXAM

Data of candidates registered for the entrance exam are shown in [paragraph D.1.2.1.](#)

##### D.5.1.2.2. INCOMING STUDENTS

Data of incoming students of the last three academic years are shown in [paragraph D.1.2.2.](#)

### D.5.2. REGULARITY OF STUDIES

*Insight into the regularity with which the students pass their exams.*

*Graphs and tables provide information on the number of students who leave the programme after the first year and the number of regular graduates, focusing on the number of credits obtained at the end of the first year, the number of exams passed and the average grade achieved for each course unit.*

#### D.5.2.1. STUDENTS LEAVING THE PROGRAMME BETWEEN YEARS 1 AND 2

Data of students leaving the Study Programme of the last three academic years are shown in [paragraph D.2.1.](#)

### D.5.2.2. REGULAR GRADUATES

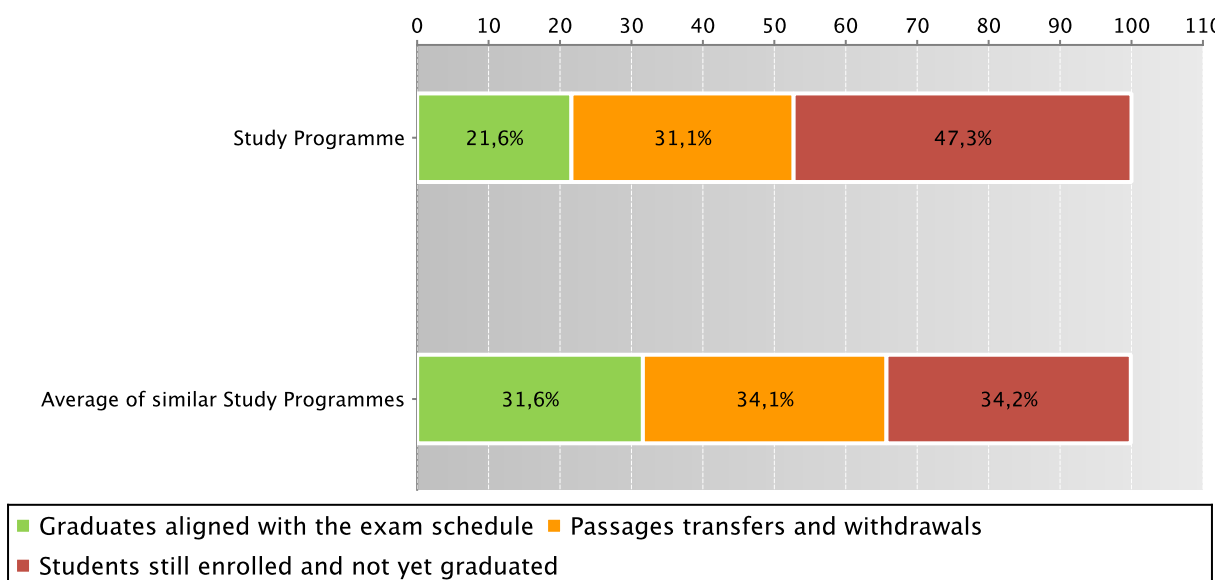
Here you will find information on regular graduates, on how many students, at the end of the regular programme duration, left the programme and how many are still enrolled but not aligned to the exam schedule.

The **graph** and the **table** show the situation concerning **registered students** for the indicated academic year, at the end of the regular duration of the Study Programme, highlighting the percentage of regular graduates, the number of students still enrolled (**not aligned to the exam schedule** and **repeating** students), students who have left the programme (including **passages**, **transfers** and **withdrawals**).

The Study Programme data is compared with the average of **similar Study Programmes** (which belong to the same group) for students registered in the indicated academic years.

Situation of students 2007/2008 at the end of regular duration of the study programme

Data of the Study Programme D.M. 509/99 Exercise and Sport Sciences (code 0107)



Data of the Study Programme D.M. 509/99 Exercise and Sport Sciences (code 0107)

	Registered students	Regular graduates		Passages transfers and withdrawals		Students still enrolled and not yet graduated		
		N.	%	N.	%	N.	%	
Students 2007/2008	Study Programme	167	36	21,6%	52	31,1%	79	47,3%
	Average of similar Study Programmes	38,5	12,2	31,6%	13,1	34,1%	13,2	34,2%

Go back to D.2.2. Regular graduates

### D.5.2.3. ADDITIONAL DATA ON REGULARITY OF STUDIES

#### D.5.2.3.1. CREDITS OBTAINED BY STUDENTS IN THE 1ST YEAR

Data of credits obtained by students in the 1st year of the last three academic years are shown in paragraph D.2.3.1.

#### D.5.2.3.2. EXAMS PASSED AND AVERAGE GRADE

Data of exams passed and average grade are shown in paragraph D.2.3.2.

### D.5.3. OPINIONS OF ATTENDING STUDENTS AND GRADUATES

*Opinions of graduates on the Study Programme.*

*Tables and graphs provide information on the number of graduates who expressed positive opinions on the Study Programme, focusing on opinions expressed by attending students on course units.*

#### D.5.3.1. OPINION OF GRADUATES

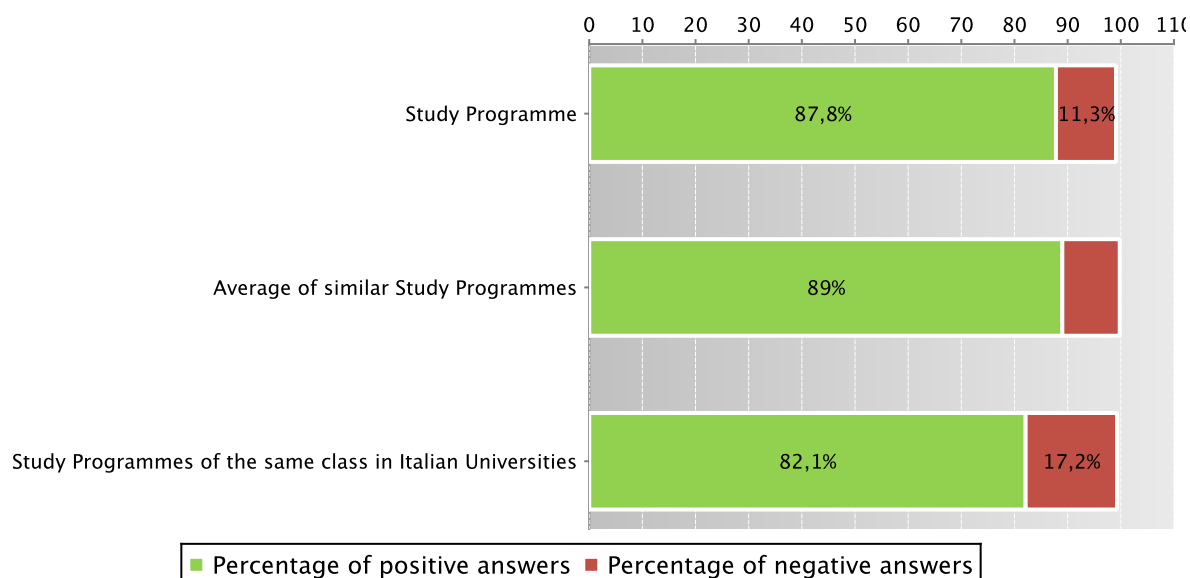
The **graph** shows the percentage of graduates (AlmaLaurea survey) who responded positively to the question: “**Are you generally satisfied with the Study Programme**”.

In addition, the **table** shows the percentage of students who answered “Yes, to the same programme at the university” to the question “Would you register again to the university?”.

The Study Programme data is compared with the average of **similar Study Programmes (which belong to the same group)**, for the indicated years.

Graduates in 2010 who responded positively to the question: “Are you generally satisfied with this Study Programme?”

*Data of the Study Programme D.M. 509/99 Scienze motorie (code 0107)*



*Data of the Study Programme D.M. 509/99 Scienze motorie (code 0107)*

		N. graduates	Completed Questionnaires	% of positive answers to the question: “Are you generally satisfied with this Study Programme?”	% of answers “yes to the same Programme in the same University” to the question “Would you register again to the University”
2010	Study Programme	126	115	87,8%	75,7%
	Average of similar Study Programmes	31,7	29,2	89,0%	72,8%
	Study Programmes of the same class in Italian Universities	1916	1710	82,1%	64,4%

Symbols:

(\*) The opinions of the Study Programmes with less than 5 graduates are not shown.

Further information on [Graduates’ Profile Report](#).

Go back to [D.3.1. Opinion of graduates](#)

#### D.5.3.2 ADDITIONAL DATA ON OPINIONS OF STUDENTS

### D.5.3.2.1. OPINION OF ATTENDING STUDENTS

Data of opinion of attending students of the last three academic years are shown in paragraph D.3.2.1.

### D.5.4. ENTRY INTO THE WORLD OF WORK

*Employment situation of graduates of the Study Programme.*

*Tables and graphs provide information on the employment situation of graduates one year after graduating.*

#### D.5.4.1. EMPLOYMENT SITUATION

The paragraph shows the employment situation of graduates one year after graduating.

The data is taken from the [AlmaLaurea](#) reports on the employment situation of graduates.

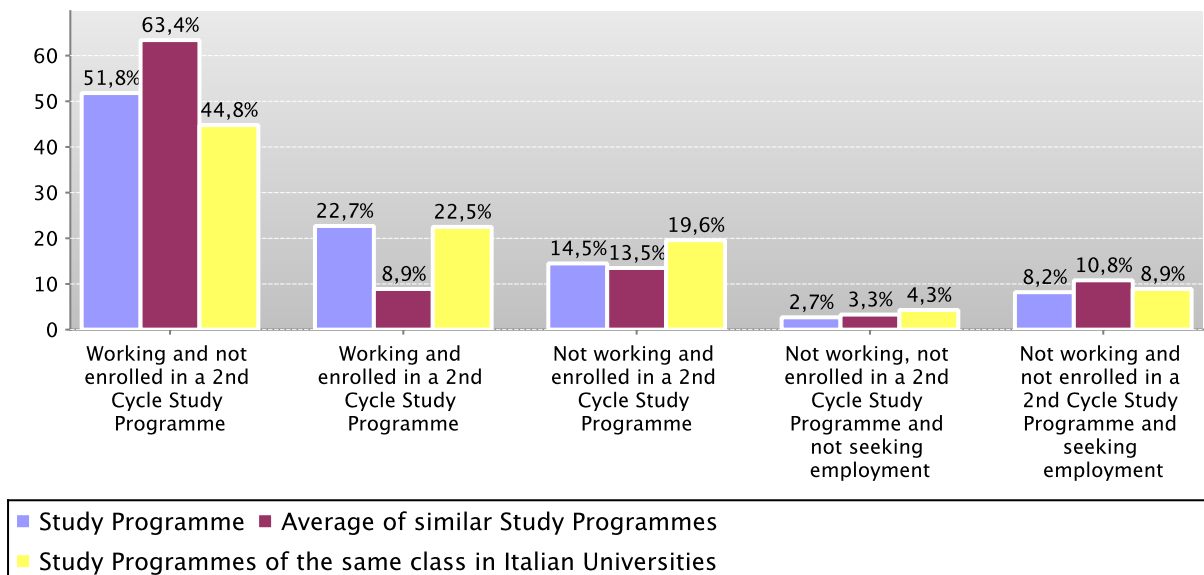
The **graph** shows who is working, who is not working but has enrolled in a Second Cycle study programme, who is not working and is not seeking employment, who is not working but is seeking employment.

In addition, the **table** shows the number of graduates interviewed, the number involved in internships and traineeships and the appropriateness of their degree to the job.

The Study Programme data is compared with the average of similar Study Programmes (which belong to the same group) and the average of Study Programmes of the same faculty of other Italian universities for the graduates of the indicated years.

Employment situation of graduates in 2010 one year after graduating

*Data of the Study Programme D.M. 509/99 Exercise and Sport Sciences (code 0107)*



		N. graduates interviewed	Employment and education situation (1)					Not working, not seeking employment, but following a university programme/traineeship (2)	Degree's appropriateness for the job (referred to the graduates who just work) (3)	
			Working and not enrolled in a 2nd Cycle Study Programme	Working and enrolled in a 2nd Cycle Study Programme	Not working and enrolled in a 2nd Cycle Study Programme	Not working, not enrolled in a 2nd Cycle Study Programme and not seeking employment	Not working and not enrolled in a 2nd Cycle Study Programme and seeking employment		Effective / very effective	Quite effective
Graduation Year 2009	Study Programme	101	42,6%	19,8%	16,8%	5,0%	15,8%	12,9%	61,7%	18,3%
	Average of similar Study Programmes	26	66,8%	8,5%	13,7%	2,8%	8,2%	11,1%	77,6%	10,2%
	Study Programmes of the same class in Italian Universities	1827	42,9%	25,2%	18,3%	4,1%	9,4%	11,8%	59,9%	23,9%
Graduation Year 2010	Study Programme	110	51,8%	22,7%	14,5%	2,7%	8,2%	10,9%	60,0%	22,5%
	Average of similar Study Programmes	26,6	63,4%	8,9%	13,5%	3,3%	10,8%	12,2%	74,7%	10,6%
	Study Programmes of the same class in Italian Universities	1915	44,8%	22,5%	19,6%	4,3%	8,9%	12,1%	58,4%	23,1%

Symbols:

(\*) The opinions of the Study Programmes with less than 5 graduates are not shown.

#### Notes on the AlmaLaurea report on the employment situation of graduates

**(1)** "Employment and education situation": the number of employed graduates is the sum of those working and those working who are also enrolled in a 2nd cycle degree programme. The number of those enrolled in a 2nd cycle degree programme is the sum of those who are working and studying and those who are only studying.

**(2)** "Number of those who do not work, who are not seeking employment but who are following a university programme/traineeship": the definition includes those who are enrolled in traineeships, PhD degrees, specialisation schools, Italian "master universitari" (first and second level). The presentation of this data complies with article 2 of D.M. 544 of 31st October 2007, as later provided for in Management Decree no. 61 of 10th June 2008 (transparency requirements).

**(3)** The evaluation of the appropriateness of the degree is obtained by a combination of the requirement of the relative qualification for the job held and the level of usage of the skills learned at university.

Further information on [Graduates' Employment report](#).

Go back to [D.4.1. Employment situation](#)

## E. FIND OUT MORE: THE QUALITY OF YOUR STUDY PROGRAMME

The University of Bologna has identified its objectives as the *personal, cultural and professional growth of students and the improvement of the quality of learning, also in relation to the needs of society* (Strategic Plan 2010-2013).

Students, employers and society as a whole, have the right to effective learning for individual and intellectual growth, to develop critical sense and to prepare for the world of work.

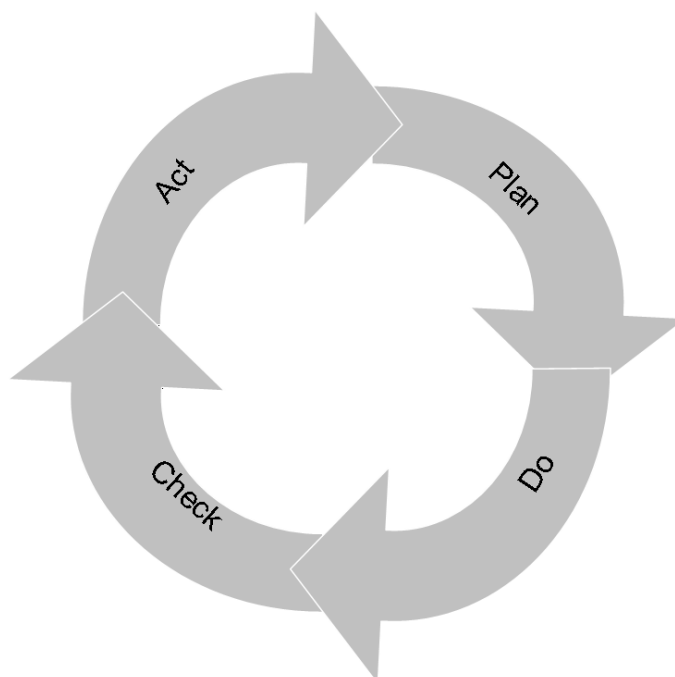
In the Statute and the Strategic Plan 2010-2013 the University of Bologna acknowledges its responsibility in guaranteeing the quality of its study programmes, and for this purpose adopts an "internal quality assurance system".

### The Internal Quality Assurance system

The internal quality assurance system is a set of processes and responsibilities adopted to guarantee the quality of Study Programmes at the University of Bologna.

The guarantee of the quality of a Study Programme is the correspondence of the results achieved with the set objectives, in the following phases:

- Plan: defining the objectives
- Do: implementing the planned actions
- Check: checking that the objectives have been achieved
- Act: planning improvement action



This path responds to the expectations of students, guides teaching behaviour and provides indicators for the assessment of results. Self-assessment is based on the analysis of significant data (for example, the number of students graduating in line with the exam schedule, students' opinions and the employment rates of graduates) and highlights strengths and weaknesses in order to reflect on the achieved results, critically consider one's own working methods and take steps for the continual improvement of the Programme. This path involves all educational stakeholders, including students, in order to make use of the contributions of everyone with first-hand knowledge of the Study Programme. Improvement is therefore a day to day development, concerning all aspects of teaching: from the lesson timetable to the publication of on-line programmes, from classroom management to exam methods, and the actual design of the Programme.

This is what happens in each phase:

- **Planning:** the Study Programme is the result of a proposal from the teaching structures and approved by the Academic Bodies.
- **Management:** Schools, Departments and Study Programmes manage the activities required to ensure teaching. The activities are organised as follows:

What we do	Who does what				
	Professors	Study Programme	Schools	Departments	General Administration
Teaching calendar, lessons programme and exam schedules			x		
Management of financial resources			x	x	
Classroom teaching	x				
Management of classrooms and laboratories			x	x	
Libraries and study rooms			x	x	
Approval of individual study plans		x			
Communication and information		x	x		Academic Affairs Division
Guidance service		x	x		Academic Affairs Division
Internships		x	x		Academic Affairs Division
Administrative services: Student Administration Office					Academic Affairs Division
Administration services: Degree programme office			x		Academic Affairs Division
Study grants and loans ad honorem					Academic Affairs Division
Student mobility: university subsidies and programmes					International Relations Division
Mobility: study grants for dissertations abroad			x		
Mobility: authorisations and recognitions		x			
Other students support services		x	x		x

- Internal assessment:** every Study Programme periodically assesses its own results, evaluating, for example, the number of enrolled students, the number of withdrawing students, student opinions etc.; in this way, the strengths and weaknesses, as well as any implemented improvement actions, are highlighted. This phase is organised as follows:



What we do	Who does what
<p><b>Definition, gathering and publication of evaluation data</b> According to the general guidelines of the University and national and international standards, are defined the tools through which should be evaluated the results (indicators). The survey data to be evaluate are published every year on the Report of the Study Program.</p>	Academic Bodies
<p><b>Self-Assessment</b> The Schools and Study Programmes assess the effectiveness of the previously adopted solutions, analyse the progress of their learning activities and draw up proposals for improvement.</p>	Schools and Study Programmes
<p><b>Internal audit</b></p> <p>The results of the self-assessment process are reviewed in the following phases:</p> <ul style="list-style-type: none"> <li>• <b>Analysis:</b> the University Quality Manager analyses the review documents, considering the ability to identify problems, propose solutions and the overall development of the internal quality assurance system.</li> <li>• <b>Review:</b> The observations on the results obtained and the good practices adopted are examined together with the persons in charge of the Schools and Study Programmes in meetings organised by scientific-disciplinary field. The persons in charge receive the observations and inputs on the areas for development and the actions to be adopted in future to improve results.</li> <li>• <b>Sharing:</b> the conclusions of the review activities are submitted to the Academic Bodies and the University Evaluation Board.</li> </ul>	<p>Quality Manager</p> <p>Vice Rector for Teaching and Education</p> <p>Academic Bodies</p>
<ul style="list-style-type: none"> <li>• <b>Improvement:</b> on the basis of the results of the internal audit, the Schools and Study Programmes plan improvement activities, to ensure that the Study Programmes increasingly respond to the needs of society. The cycle then starts over again, with the definition of actions to be implemented, the results of which are in turn verified, in a continuous path that guarantees the quality of education.</li> </ul>	

## F. GLOSSARY TERMS

### Additional Learning Requirements

Students enrolling in the first year of a first cycle or single cycle degree and who, following the results of the entrance exams established for each study programme, do not possess the knowledge required for access to the programme, are assigned additional learning requirements (OFA).

The OFA are fulfilled by passing an assessment test defined by the programme.

The non-fulfilment of the requirements by the date set by the Academic Bodies and published on the University Portal will lead to the re-enrolment in the first year of the programme.

### AlmaLaurea

AlmaLaurea is an innovative in-line database service of graduates' curriculum vitae (1,620,000 CVs, from 53 Italian universities as of 05/07/2012), which offers a link between graduates, universities and businesses.

Created in 1994 on the initiative of the Statistical Observatory of the University of Bologna, managed by a consortium of Italian universities with the support of the Ministry of Education, University and Research, the purpose AlmaLaurea is to act as a point of contact between businesses and graduates, a reference within universities for anyone (students, businesses, etc...) working in the field of university studies, employment and the condition of young people at different levels.

### Average of similar study programmes (belonging to the same group)

Average of the Study Programmes (which belong to the subject group)

Calculated average which refers to all study programmes of the same cycle which belong to the subject group.

There are four groups, composed as follows:

- **BIOMEDICAL group:** Study Programmes of the Schools of Pharmacy, Biotechnology and Sport Science; Medicine; Agriculture and Veterinary Medicine
- **SCIENTIFIC-TECHNOLOGICAL group:** Study Programmes of the Schools of Engineering and Architecture; Sciences
- **SOCIAL SCIENCES group:** Study Programmes of the Schools of Economics, Management, and Statistics; Law, Political Sciences
- **HUMANITIES group:** Study Programmes of the Schools of Arts, Humanities, and Cultural Heritage; Foreign Languages and Literatures, Interpreting and Translation; Psychology and Education

### CFU University Learning Credits

University Learning Credits (CFU) were introduced under Italian Ministerial Decree no. 509/99 to comply with European legislation, and are a measurement of the volume of learning, including individual study, required of students; generally 1 CFU corresponds to 25 hours of a student's "overall learning effort".

### Class

Degree classes group together study programmes of the same level and with the same key learning outcomes and available learning activities for a given number of credits and in sectors which are identified as indispensable. The features of the classes are set nationally, by Ministerial Decree, and are therefore common to all universities.

### Cohort

Cohort refers to a group of students enrolled in the same academic year.

### Enrolment status

In terms of enrolment, students may be:

- **Regularly enrolled:** students enrolled for as many or fewer years than the legal duration of the study programme, who do not fall into any of the following categories;
- **Not aligned with the exam schedule:** students who, without having graduated, have enrolled in all the years of the study programme and which, for programmes with compulsory attendance, have obtained all attendance certificates;
- **Repeating:** students re-enrolling in the same year of a programme again. Starting from academic year 2009-2010, students who have not fulfilled the assigned additional learning requirements within the deadline have to enrol in the 1st year as repeating students.

### Entrance exam

Enrolment in a study programme may be free access or restricted access.

For all programmes with restricted access, candidates are required to sit an entrance exam and there are a limited number of places available. The entrance exam is a test which is used to draw up a graded list of candidates; students may enrol in the programme according to their place in the list. The methods of managing the call for applications and the list of candidates, including the methods for filling any unclaimed places, may vary from year to year. The test may be specific to a Degree Programme or may be part of a single exam covering several programmes from the same university or from other universities (during the registration the students should indicate their first choice).

The following definitions apply:

**Available places** = the number of places laid down in the call for applications to the Study Programme, or determined by subsequent legal provisions; these exclude any additional places reserved according to special provisions of the programme (e.g. for international study programmes, they do not include places for foreign students selected from other universities; for all programmes with restricted access regulated nationally, these do not include the places reserved for transferring students).

**Number of candidates for the exam** = number of students registered for the exam indicating the study programme as their first choice;

**Number of participants in the exam** = number of students participating in the exam indicating the study programme as their first choice;

**Number of participants in the exam for every available place** = number of students participating in the exam who indicated the study programme as their first choice as a ratio of the number of places available on the programme.

#### First year enrolments

This includes all students enrolled in the first year, including those joining the study programme in its first year through transferrals, as well as those enrolled in the first year but not for the first time (e.g. repeating students).

#### New Careers

Students who start a new university career (excluding transfers) from year one in a second cycle programme.

#### Passages and transfers

**Passage:** when a student applies to move to a different study programme from the one enrolled in the previous year, within the same university.

**Transfer:** when a student transfers from a study programme in one university to any programme in another university.

#### Registered students

Students who begin a career in the Italian University System for the first time and who enrol in the first year (i.e. for whom no previous university careers are recorded) of a First Cycle (L509, L) or Single Cycle programme (LSCU, LMCU)

#### Statistical Observatory of the University of Bologna

The Statistical Observatory was founded in 1997 in order to “provide the university governing bodies with a reliable and timely documentary and monitoring database aiming to promote decision-making processes and planning, particularly of learning activities and other services targeting the student population” (art.1 of the Founding and Operational Regulation). Following the disabling of the Statistical Observatory, as resolved by the Board of Governors on 14 December 2010, from the second semester of academic year 2010-11 the survey and subsequently analysis of the attending students opinion is cared for the University of Bologna by Academic Affairs Division - Quality Assurance Department and Control and Finance Division - Support Planning and Evaluation Department. The overall results and the methods of collection and analysis are described in the document published online on the [Statistical Observatory of the University of Bologna](#).

#### University DataWarehouse

Information service for the managers of the University of Bologna organisational departments which gathers, integrates and reorganises data from various sources and makes it available for analysis and evaluation for the purposes of planning and decision-making.

#### Withdrawal

Suspension of studies by students who do not register in the next academic year, or who drop out from the degree programme.