

2013



ALMA MATER STUDIORUM
UNIVERSITÀ DI BOLOGNA



School of Arts, Humanities, and Cultural Heritage
LAUREA (FIRST CYCLE DEGREE/
BACHELOR - 180 ECTS) IN
ANTHROPOLOGY, RELIGIONS,
ORIENTAL CIVILIZATIONS
A.Y. 2013/2014

Programme Director Prof. Umberto Mazzone

REPORT

Study Programme Report
Anthropology, Religions, Oriental Civilizations
Programme ex D.M. 270/04 - Code 8493 - Class L-42
School of Arts, Humanities, and Cultural Heritage
Programme Director Prof. Umberto Mazzone

Created in collaboration with Teaching and Learning Administrative Area (AFORM – Area della Formazione) – Quality Assurance Unit

Edited by AAGG – University Web Portal Division and CeSLA – Web Technology Division, with MultiPublishing technology

Release date: July 2013

Academic year of reference: 2013/2014

www.unibo.it/QualityAssuranceEn

INDICE

What is the Study Programme Report?	1
A. Presentation and prospects	2
A.1. Presentation	2
A.2. Admission requirements	2
A.3. Learning outcomes	3
A.4. Career opportunities	4
A.5. Opinion of social partners and potential employers	4
A.6. Further studies	4
B. Teaching and Learning	5
B.1. Course Structure Diagram	5
B.2. Calendar and lecture timetable	5
C. Resources and services	6
C.1. Teachers	6
C.2. Student services: offices	6
C.2.1. Future students	6
C.2.2. Enrolled students	6
C.2.3. International students	6
C.2.4. Graduates	6
D. The Study Programme in figures	7
D.1. Students starting their university careers	7
D.1.1. Enrolments and registrations	7
D.1.2. Additional data on students' starting their university careers	9
D.1.2.1. Candidates registered for the entrance exam	9
D.1.2.2. Incoming students	9
D.1.2.3. Additional Learning Requirements	11
D.2. Regularity of studies	12
D.2.1. Students leaving the Programme between years 1 and 2	12
D.2.2. Regular graduates	14
D.2.3. Additional data on regularity of studies	15
D.2.3.1. Credits obtained by students in the 1st year	15
D.2.3.2. Exams passed and average grade	16
D.3. Opinions of graduates and attending students	18
D.3.1. Opinion of graduates	18
D.3.2. Additional data on opinions of students	20
D.3.2.1. Opinion of attending students	20
D.4. Entry into the world of work	21
D.4.1. Employment situation	21
D.5. Information on pre-reform programmes (DM 509/99)	22
D.5.1. Students starting their university careers	22
D.5.1.1. Enrolments and registrations	22
D.5.1.2. Additional data on students' starting their university careers	22
D.5.1.2.1. Candidates registered for the entrance exam	22
D.5.1.2.2. Incoming students	22
D.5.2. Regularity of studies	22
D.5.2.1. Students leaving the Programme between years 1 and 2	22
D.5.2.2. Regular graduates	23
D.5.2.3. Additional data on regularity of studies	23
D.5.2.3.1. Credits obtained by students in the 1st year	23
D.5.2.3.2. Exams passed and average grade	23

D.5.3. Opinions of attending students and graduates	24
D.5.3.1. Opinion of graduates	24
D.5.3.2 Additional data on opinions of students	24
D.5.3.2.1. Opinion of attending students	25
D.5.4. Entry into the world of work	25
D.5.4.1. Employment situation	25
E. Find out more: the quality of your Study Programme	27
F. Glossary terms	30

WHAT IS THE STUDY PROGRAMME REPORT?

What is the Study Programme Report?

The Study Programme Report provides updated information which is important for the purposes of Quality Assurance and is published annually by the University of Bologna.

The main aspects of the teaching programme are described in detail, with a view to assuring the principle of transparency and promoting self-assessment and continuous improvement processes.

The document provides a concrete overview of the features and results of the Study Programme for students, families, employers and so on.

For example, regarding the current issue of employment, it describes the learning outcomes and career opportunities; it also includes statistics on the percentage of employed graduates (D.4. Employment situation).

The document is organised into five sections and a glossary:

A. Presentation and prospects

Key information on the Study Programme, including the expected learning outcomes, career opportunities and further studies.

B. Teaching and Learning

The updated course structure diagram with the full titles and listings of the course units and the latest published lecture timetable.

C. Resources and services

The list of teaching staff and their relative curricula, the offices (secretariats), services (work placements) and infrastructures (libraries, laboratories) available to students.

D. The Study Programme in Figures

Key data shows how many students are enrolled, how many have been assigned additional learning requirements, how many drop out after the first year, how many graduate in line with the programme schedule, the opinions of attending and graduating students on the teaching programmes and information concerning graduate employment.

E. Find out more: the quality of your Study Programme

How the quality system applied to your Study Programme works. The quality system of your Study Programme is a set of processes and responsibilities adopted to guarantee the quality of all Study Programmes at the University of Bologna.

NOTES:

- Reports are available for all Study Programmes for which it is possible to enrol in the first year in academic year 2012/2013: the information and data provided is as updated as possible.
- Sections A, B and C provide data for the academic year 2012/2013.
- Section D presents data regarding the Study Programmes in the last three academic years.
- The information and data were taken from the University databases and the reports published by the [Statistical Observatory of the University of Bologna](#) and [AlmaLaurea](#), and are updated to **15 June 2012**.

A. PRESENTATION AND PROSPECTS

This section presents the key information concerning the Study Programme, including the expected learning outcomes, career opportunities and further studies, updated to the academic year 2013/2014.

A.1. PRESENTATION

This paragraph provides information on the specific learning outcomes of the Study Programme and the curriculum.

The degree programme in Oriental Anthropology, Religions and Civilisations aims to study demographic-ethnological and anthropological, religious and oriental subject areas. The programme aims to provide scientific and professional training in the problems of multi-cultural and multi-religious societies.

On completion of the programme, students

- possess in-depth knowledge in demographic-ethnological-anthropological areas pertaining to local and global socio-cultural dynamics, identity and gender differences;
- possess the indispensable investigation tools for understanding the cultures of Asian, African and American countries and oriental civilisations, having studied the different aspects of history, language and literature, religions, spirituality, philosophy and the arts;
- are fully aware of the need for a pluralist and global vision of history;
- possess specialist competencies in the comparative analysis of cultures and the problems linked to social change, cultural mediation and socio-religious pluralism;
- are also able to apply techniques for collecting and processing empirical data, and can handle communication and information management tools;
- have good knowledge of an extra-European language (the main languages taught, also by mother tongue teaching staff, include Arabic, Armenian, Chinese, Hebrew, Japanese, Persian and Sanskrit but other languages may be taught from year to year, and other linguistic activities are run in specific seminars) or a European language used through colonial inheritance in non-European countries.
- use at least one other European language (other than that which may be studied for the purpose of the previous point) fluently orally and in writing;

The programme aims to develop professional profiles such as assistant anthropologist, socio-cultural operators and inter-cultural operators with specific historical-cultural and linguistic knowledge also for the analysis of different religious cultures. The programme objectives are achieved through: 1) general learning activities (in history, philosophy, literature and geography) also for further studies in order to become teachers; 2) learning activities which analyse European and extra-European contexts with anthropological and religious tools; 3) learning activities which analyse extra-European contexts from an historical, historical-artistic, linguistic-literary and philosophical perspective. The programme includes and promotes study periods abroad, international exchanges and internships within public and private bodies, also with a view to future employment.

A.2. ADMISSION REQUIREMENTS

This paragraph provides information on the knowledge required for admission to the Study Programme.

Applicants to the degree programme must hold either a five-year secondary school diploma or equivalent suitable qualification obtained abroad, or a four-year secondary school diploma and diploma for the relative supplementary year or, where this is no longer active, they will be assigned learning requirements.

Furthermore, students are required to have an adequate background education.

Required knowledge/competences for admission to the degree programme

The knowledge/competences required are as follows:

- good general knowledge;
- essential logic and reasoning skills;
- ability to read, understand and interpret texts and documents written in Italian;
- good communication skills in Italian.

Assessment of required knowledge/competences

All students wishing to enroll have to sit the mandatory **Admission test** (details and deadlines in the following page “Iscriversi” on the Degree Programme). Student failing to reach the minimum required score will be allocated additional learning requirements (OFA).

OFA (Additional learning requirements)

Students failing to reach the required standards in one or more parts of the test will be allocated the OFA based on linguistic Italian skills. OFA are deemed to be fulfilled by students who pass the OFA at the end of the course or in the following three exams.

Students who have not fulfilled the OFA by the date resolved by the Academic bodies and published on the Unibo Home Page must enroll, in the following year as “repeating students” in the first year of the degree programme and are obliged to fulfill the additional learning requirements.

A.3. LEARNING OUTCOMES

This paragraph provides information on the knowledge and skills students will have acquired by the end of the Programme.

Graduates:

- will have a sound preparation in ethno-anthropological and religionist sciences, from a theoretical and methodological point of view, in direct reference to contemporary problems of interculturalism and religious pluralism within European and non-European contexts;
- possesses basic knowledge of cultural history, philosophical and religious thought and the material and artistic culture of one or more non-European civilisations in Asia, Africa or the Americas, including a first approach to the language (ancient and/or modern).
- possess the main methodological tools of humanist subjects to understand historical-cultural and religious phenomena.
- have basic knowledge of the theories and methods of historical research;

The knowledge and understanding are achieved through participation in lectures, practical exercises and workshops, seminars and/or internships, as well as through individual study in the various learning activities. The learning outcomes are assessed mainly through written and oral exams, progress tests and oral presentations.

Capacità di applicare conoscenza e comprensione (applying knowledge and understanding)

Graduates:

- are able to analyse cultural, social and religious relationships between ethnic groups within different communities;
- are able to understand the relationships between different ethnic groups and the public institutions, particularly concerning religious life, the family, school, diet, relations between the sexes;
- are able to understand the needs of different ethnic groups and employers in order to facilitate positive dynamics in the job market;
- are able to organise and classify tangible and intangible historical and cultural assets from an anthropological point of view, also in terms of religious culture;
- are able to organise and classify artistic production in their area of competency;
- are able to handle different fields of intervention with appropriate linguistic skills;
- are able to use standard and specific computer and telematic tools for historical research; they are able to use specific programmes for processing information and texts in non-European graphic systems.

This knowledge and understanding is achieved through critical study of texts proposed for individual study and stimulated by classroom activities. The learning outcomes are assessed mainly through written and oral exams, progress tests and oral presentations.

Autonomia di giudizio (making judgements)

Graduates:

- are able to sort different information sources and organise literary and printed materials, also in their original language, in the studied fields and are able to carry out bibliographic and documentary research autonomously;
- are able to obtain ethno-anthropological and religious information by proactive listening and observation and can transcribe and organise their findings, also using IT instruments;
- are able to apply the basic analytical categories of anthropology as they analyse how cultures construct reality;
- understand historical dynamics from social transformation;
- is able to identify the characterising elements of non-European cultures and identify and use the most appropriate communication registers;
- are able to recognise prejudice and assess the problems arising among members of non-European cultures, also in religious terms.

Judgement skills are developed in particular through practical exercises, supervised seminars, internships and the production of written assignments, as well as the activities assigned by the supervising professor in preparation of the final examination.

Abilità comunicative (communication skills)

Graduates:

- are able to understand and communicate on multiple communicative registers typical of various religious, cultural and social contexts, and to relate within mixed work groups;
- are able to communicate their knowledge, explain the fundamental contents of ancient and modern non-European cultures orally and in writing, and apply their knowledge to produce written and editorial works;
- are able to communicate in a language of the European Union.
- have good passive knowledge of the studied non-European language (where relevant);

Written and oral communication skills are particularly developed during seminars, workshops, exercises, supported by relative tests.

Capacità di apprendimento (learning skills)

Graduates are able to hunt up bibliographical sources (traditional and digital) for anthropological, religionist and historical-cultural investigations and for their own further education.

Learning skills are developed generally throughout the study programme, particularly through self-study, course unit exams, the production of individual assignments and group work, as well as during the preparation for the final examination.

A.4. CAREER OPPORTUNITIES

This paragraph provides information on the occupational profile, functions and fields of employment available to graduates of this Programme.

Graduates may fill a range of professional positions in the fields of employment listed below:

Assistant Anthropologist

Functions:

- conducting censuses and surveys on the cultural and ethno-anthropological heritage
- collection of information and documentation;
- organising and managing the cultural and ethno-anthropological heritage for the purposes of tourism promotion;
- managing intercultural promotion and mediation activities and projects for tailoring social services to multicultural users; - planning cultural itineraries for tourism. Career opportunities:
- protection and promotion of the cultural heritage (tangible and intangible);
- social and health services;
- educational services;
- publishing;
- cultural tourism;
- international cooperation.

Socio-cultural operator

Functions:

- intercultural operator for social and cultural activities which require specific linguistic knowledge and historical-cultural knowledge of different religious cultures;
- providing consultancy on intercultural problems entailing religious/cultural mediation;
- advising local institutions and companies about religious culture in relations among various social groups;
- providing support for services of cultural and inter-religious mediation;
- working in the organisation and management of cultural promotion including the analysis of historical document and the knowledge of historical, cultural and linguistic issues of oriental civilisations.

Career opportunities:

- public, private and service companies and institutions involved in protecting and promoting the (tangible and intangible) cultural heritage, social and health services and education services:
- social welfare;
- educational services;
- prisons;
- international cooperation.

A.5. OPINION OF SOCIAL PARTNERS AND POTENTIAL EMPLOYERS

This paragraph describes the outcome of the consultation with the representative employment and trade organisations.

This information is not available in English at this time.

A.6. FURTHER STUDIES

It gives access to second cycle studies (laurea specialistica / magistrale) and master universitario di primo livello.

B. TEACHING AND LEARNING

This section describes the updated course structure diagram (for academic year 2013/2014), with the full titles and listings of the course units and the latest published lecture timetable.

B.1. COURSE STRUCTURE DIAGRAM

The link takes you to the Study Programme course structure diagrams. You can also access to each course unit content.

- [Study plan: all course units in the programme](#)

B.2. CALENDAR AND LECTURE TIMETABLE

The links take you to the teaching calendar (exam session and final examination session) and the lecture timetable (in Italian).

- [Lecture timetable](#)
- [Exam sessions](#)
- [Final examination sessions](#)

C. RESOURCES AND SERVICES

This section provides a list of teaching staff and their relative curricula and a description of the services available to students for the academic year 2013/2014.

C.1. TEACHERS

The paragraph lists the lecturers who teach in the Study Programme: from here you can access the personal web pages of each one. Information updated to 28 May 2013 (in Italian).

Permanent teaching staff:

Albanese, Andreina	Criscuolo, Lucia	Lupacchini, Rossella	Porciani, Ilaria
Angelini, Annarita	Domenici, Davide	Marchetti, Nicolò	Pozzana, Claudia
Angelozzi, Giancarlo	D'Anna, Vittorio	Marchignoli, Saverio	Quaranta, Ivo
Baldini, Isabella	Facchini, Claudia	Mascanzoni, Leardo	Regattin, Fabio
Besoli, Stefano	Facchini, Cristiana	Mazzanti, Angela Maria	Roversi Monaco, Francesca
Bori, Caterina	Franceschi, Zeldia Alice	Mazzone, Umberto	Saccone, Carlo
Burgio, Alberto	Gentili, Carlo	Morini, Enrico	Sbardella, Francesca
Cacciari, Antonio	Geraci, Giovanni	Mulinacci, Roberto	Sirinian, Anna
Caporali, Riccardo	Giovanelli, Paola	Notini, Sylvia	Soravia, Giulio
Casanova, Cesarina	Giovannini, Carla	Pallaver, Karin	Spallanzani, Mariafranca
Celli, Nicoletta	Grandi, Nicola	Pancaldi, Giuliano	Taddia, Irma
Ciardi, Marco	Jourdan, Luca	Perrone, Lorenzo	Vetri, Lucio
Cosi, Dario	Lalli, Pina	Pistosio, Maurizio Silvio	Zecchi, Marco

Contract teaching staff:

[Ardizzoni, Sabrina](#)
[Benenati, Giovanni Domenico](#)
[Cavalieri, Silvia](#)
[D'Onofrio, Svevo](#)
[Franceschini, Marco](#)
[Mangiameli, Gaetano](#)
[Takeshita, Toshiaki](#)
[Tisi, Maria Elena](#)
[Velasco Esquivel, Lucrecia](#)

C.2. STUDENT SERVICES: OFFICES

C.2.1. FUTURE STUDENTS

The link take you to the webpage which provides specific information about the offices and the services for the future students (in Italian).

- [Future students](#)

C.2.2. ENROLLED STUDENTS

The link take you to the webpage with the information on the offices and the services for the enrolled students (in Italian).

- [Enrolled students](#)

C.2.3. INTERNATIONAL STUDENTS

The link take you to the webpage with the information on the offices and the services for the international students (in Italian).

- [International students](#)

C.2.4. GRADUATES

The link take you to the webpage with the information on the offices and the services for the graduates (in Italian).

- [Graduates](#)

D. THE STUDY PROGRAMME IN FIGURES

Information on students' starting their university careers, how many students are in line with the regular programme, opinions of students and graduates on the teaching programmes and information concerning graduate employment.

This section provides the data of the last academic years for the Study Programme (SP) and a comparison with similar Study Programmes. The University of Bologna has divided its Study Programmes into four groups:

- **BIOMEDICAL** group: Study Programmes of the Schools of Pharmacy, Biotechnology and Sport Science; Medicine; Agriculture and Veterinary Medicine
- **SCIENTIFIC-TECHNOLOGICAL** group: Study Programmes of the Schools of Engineering and Architecture; Sciences
- **SOCIAL SCIENCES** group: Study Programmes of the Schools of Economics, Management, and Statistics; Law, Political Sciences
- **HUMANITIES** group: Study Programmes of the Schools of Arts, Humanities, and Cultural Heritage; Foreign Languages and Literatures, Interpreting and Translation; Psychology and Education

The section presents the results of the Study Programme for the last three academic years.

Main data shows how many students enrolled, the number of students assigned OEA, how many drop out after the first year, how many graduate in line with the programme schedule, the opinions of attending and graduating students on the teaching programmes and information concerning graduate employment.

The information and data presented in this section, updated to 28 May 2013, were taken from University databases and [AlmaLaurea](#).

Study Programmes may be subject to degree programme system modifications from one academic year to the next, and the data provided in this section may refer to a programme with a slightly different system to the one currently running (such as programme title, course structure diagram and list of lecturers). However, indicatively the data presents the general trend of the Study Programme over the past three years.

Most of the Study Programmes running at the University of Bologna have been reformed in compliance with DM 270/04, most of them from the academic year 2008/2009. In the reports provided for these Programmes, paragraph D.5. refers to the Study Programmes as they were presented prior to the reform.

D.1. STUDENTS STARTING THEIR UNIVERSITY CAREERS

Characteristics of incoming students at the beginning of their university careers. Tables and graphs provide information on the number of **registered students**, focusing on the characteristics of the students, results of any entrance tests and the students assigned any **additional learning requirements**.

D.1.1. ENROLMENTS AND REGISTRATIONS

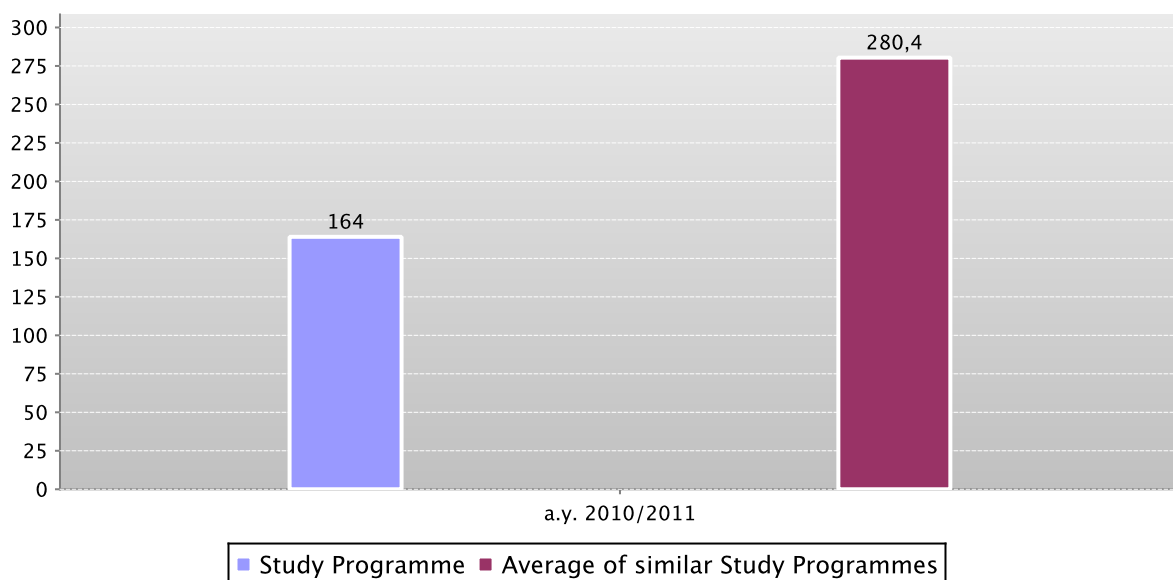
The **graph** shows the number of **students enrolled in the 1st year** compared with the **average of similar Study Programmes** (which belong to the same group).

In addition, the **table** shows the total number of **registered students** and the total number of enrolled students.

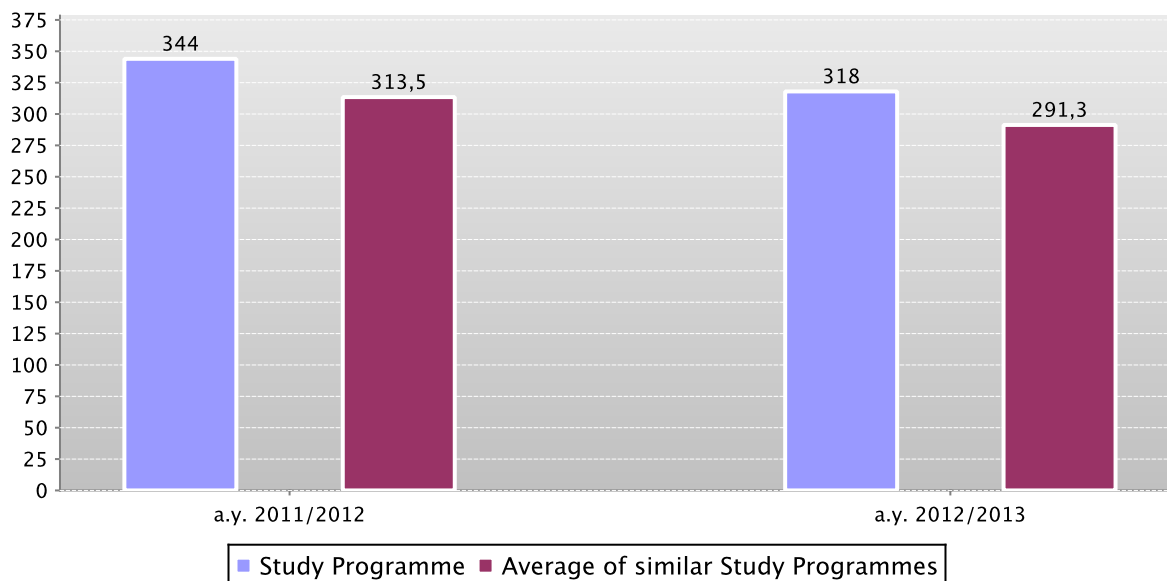
Data of the Study Programme is compared with the average of the Study Programmes of **average of similar Study Programmes** (which belong to the same group) for the indicated academic years.

First year enrolments

Data of the Study Programme D.M. 270/04 Anthropological Sciences (code 0959)



Data of the Study Programme D.M. 270/04 Anthropology, Religions, Oriental Civilizations (code 8493)



Data of the Study Programme D.M. 270/04 Anthropological Sciences (code 0959)

	a.y. 2010/2011		
	Registered students	N. first year enrolments	Total N. enrolled students
Study Programme	137	164	416
Average of similar Study Programmes	231,5	280,4	380,7

Data of the Study Programme D.M. 270/04 Anthropology, Religions, Oriental Civilizations (code 8493)

	a.y. 2011/2012			a.y. 2012/2013		
	Registered students	N. first year enrolments	Total N. enrolled students	Registered students	N. first year enrolments	Total N. enrolled students
Study Programme	283	344	627	275	318	764
Average of similar Study Programmes	263,1	313,5	373,9	247,4	291,3	358,7

D.1.2. ADDITIONAL DATA ON STUDENTS' STARTING THEIR UNIVERSITY CAREERS

D.1.2.1. CANDIDATES REGISTERED FOR THE ENTRANCE EXAM

In academic year 2012/2013 access to this Study Programme was not restricted.

D.1.2.2. INCOMING STUDENTS

Geographic origin, type of high school certificate, age and gender of students.

Data shows a homogeneous group of students (*cohort*) which started together their academic career. Students which have passed to an other Study Programme, transferred from an other university, or registered to a 2nd degree are not included.

The **tables** show the number, geographic origin, gender, age, type and grade of high school certificate of students enrolling in the degree programme.

Data of the Study Programme is compared with the average of the Study Programmes of *average of similar Study Programmes (which belong to the same group)* for the indicated academic years.

Data of the Study Programme D.M. 270/04 Anthropological Sciences (code 0959)

		Registered students	Geographic origin					Gender		Average age of registered students		
			Students coming from the province of the Study Programme site	Students coming from other provinces where Unibo has a site	Students coming from other provinces of Emilia Romagna region	Students coming from other Italian regions	Students coming from abroad	M	F	19 or less	20 - 24	25 or more
Students 2010/2011	Study Programme	137	10,2%	3,6%	14,6%	69,3%	2,2%	28,5%	71,5%	47,4%	39,4%	13,1%
	Average of similar Study Programmes	231,5	21,9%	16,3%	16,3%	42,9%	2,6%	27,6%	72,4%	60,8%	31,4%	7,8%

		High school certificate					Grade of High school			
		Vocational schools	Technical Colleges	High school specializing in education and in psycho-pedagogical science	High schools specializing in classical studies, modern languages, science education	Other Italian or foreign high schools	Grade ranging from 60 to 69	Grade ranging from 70 to 79	Grade ranging from 80 to 89	Grade ranging from 90 to 100
Students 2010/2011	Study Programme	8,8%	15,3%	8,0%	61,3%	6,6%	26,3%	32,8%	24,8%	16,1%
	Average of similar Study Programmes	9,5%	16,3%	8,5%	57,8%	8,0%	25,6%	31,1%	23,7%	19,1%

		Registered students	Geographic origin					Gender		Average age of registered students		
			Students coming from the province of the Study Programme site	Students coming from other provinces where Umbro has a site	Students coming from other provinces of Emilia Romagna region	Students coming from other Italian regions	Students coming from abroad	M	F	19 or less	20 - 24	25 or more
Students 2011/2012	Study Programme	283	18,4%	4,2%	16,3%	59,7%	1,4%	31,4%	68,6%	50,9%	41,0%	8,1%
	Average of similar Study Programmes	263,1	20,5%	16,6%	15,4%	45,0%	2,5%	29,5%	70,5%	61,4%	33,2%	5,4%
Students 2012/2013	Study Programme	275	18,5%	7,6%	12,4%	60,4%	1,1%	32,7%	67,3%	52,4%	39,6%	8,0%
	Average of similar Study Programmes	247,4	20,7%	15,4%	14,7%	45,9%	3,3%	29,1%	70,9%	61,3%	32,8%	5,8%

		High school certificate					Grade of High school			
		Vocational schools	Technical Colleges	High school specializing in education and in psycho-pedagogical science	High schools specializing in classical studies, modern languages, science education	Other Italian or foreign high schools	Grade ranging from 60 to 69	Grade ranging from 70 to 79	Grade ranging from 80 to 89	Grade ranging from 90 to 100
Students 2011/2012	Study Programme	9,2%	13,1%	14,8%	58,7%	4,2%	24,4%	39,2%	20,5%	15,2%
	Average of similar Study Programmes	8,9%	13,4%	14,7%	55,8%	7,1%	24,0%	32,8%	23,0%	19,4%
Students 2012/2013	Study Programme	6,5%	13,5%	17,1%	59,3%	3,6%	25,5%	30,5%	28,0%	14,5%
	Average of similar Study Programmes	8,2%	13,1%	14,4%	55,3%	8,9%	24,9%	28,5%	23,7%	18,1%

D.1.2.3. ADDITIONAL LEARNING REQUIREMENTS

Students on the programme assigned **additional learning requirements** (OFA). OFA are learning requirements assigned to enrolled students who have not demonstrated the full possession of the entrance requirements. The assessment methods of students' initial preparation and the fulfilment of the OFA are described in the Study Programme Regulations, and may change each year. Students not completing the additional learning requirements are obliged to re-enrol in year 1 as repeating students.

The **table** shows the number of **registered students**, the number of students assigned OFA, the number who fulfilled them, the percentage of students assigned the OFA compared to the number of enrolled students and the percentage fulfilling the OFA compared to those assigned them.

Data of the Study Programme D.M. 270/04 Anthropological Sciences (code 0959)

	Registered students (a)	Students assigned OFA (b)	Students who fulfilled OFA (c)	% of students assigned OFA compared to the number of enrolled students (b/a)	% of students fulfilling the OFA compared to number of students assigned (c/b)
Students 2010/2011	137	18	13	13,1%	72,2%

Data of the Study Programme D.M. 270/04 Anthropology, Religions, Oriental Civilizations (code 8493)

	Registered students (a)	Students assigned OFA (b)	Students who fulfilled OFA (c)	% of students assigned OFA compared to the number of enrolled students (b/a)	% of students fulfilling the OFA compared to number of students assigned (c/b)
Students 2011/2012	283	15	6	5,3%	40,0%
Students 2012/2013	275	45			

*Note: At the time of publication of this report the number of students fulfilling the OFA can be measured for a.y. 2009/2010 and a.y. 2010/2011 only.

D.2. REGULARITY OF STUDIES

Insight into the regularity with which the students pass their exams.

Graphs and tables provide information on the number of students who leave the programme after the first year and the number of regular graduates, focusing on the number of credits obtained at the end of the first year, on the exams passed and average grade achieved for each course unit.

D.2.1. STUDENTS LEAVING THE PROGRAMME BETWEEN YEARS 1 AND 2

Here the number of students leaving the Study Programme is shown.

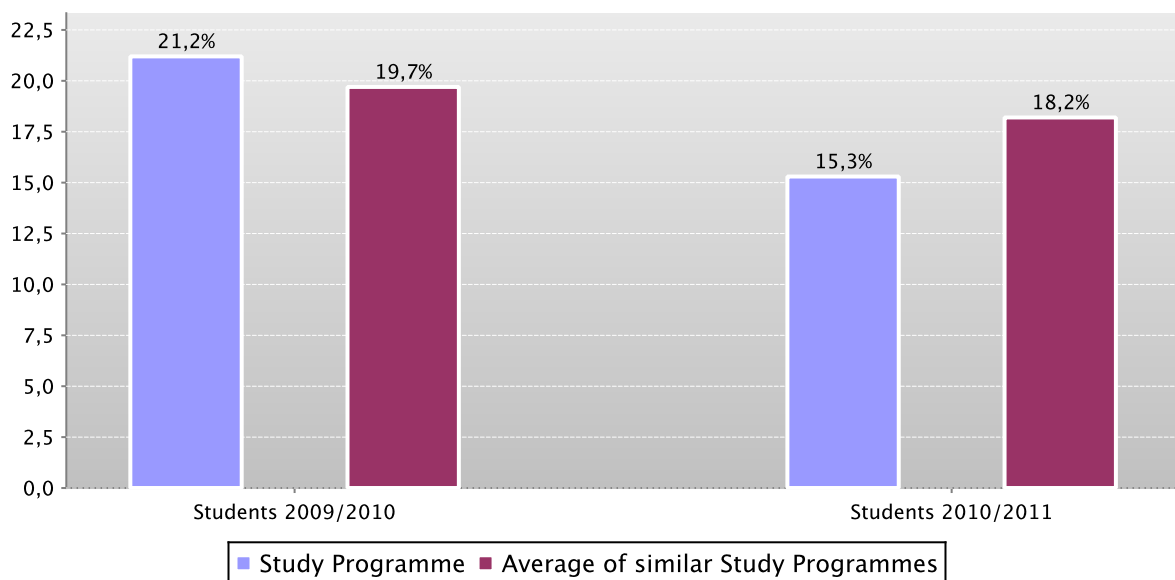
The **graph** shows the percentage of students who leave the programme after the first year compared to the average of similar Study Programmes (belonging to the same group).

The **table** shows the registered students, the percentage of students leaving the programme who pass to a different Study Programme in the same university, transfer to another university or withdraw from studies, as well as the enrolled repeating students and those enrolled in the second year.

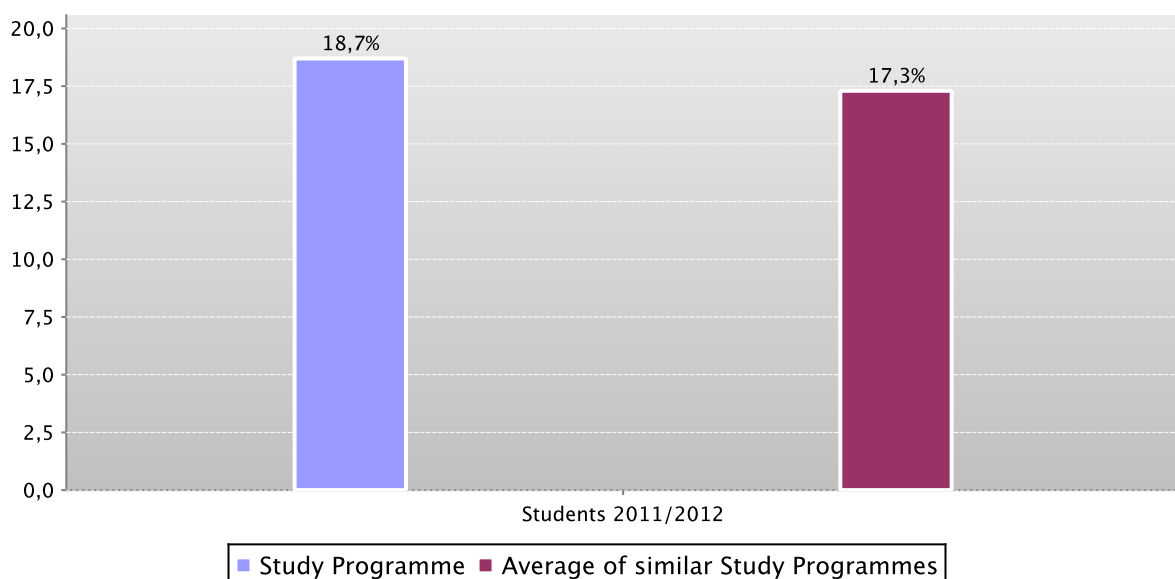
The Study Programme data is compared with the average of similar Study Programmes of (which belong to the same group), for students registered in the indicated academic years.

Percentage of withdrawals between years 1 and 2

Data of the Study Programme D.M. 270/04 Anthropological Sciences (code 0959)



Data of the Study Programme D.M. 270/04 Anthropology, Religions, Oriental Civilizations (code 8493)



Data of the Study Programme D.M. 270/04 Anthropological Sciences (code 0959)

		Registered students	% withdrawals	% passages and transfers	% repeating students	Students enrolled in the second year
Students 2009/2010	Study Programme	132	21,2%	5,3%	0,0%	97
	Average of similar Study Programmes	189,8	19,7%	5,6%	0,4%	141,1
Students 2010/2011	Study Programme	137	15,3%	5,8%	2,9%	104
	Average of similar Study Programmes	231,5	18,2%	5,9%	1,4%	172,5

Data of the Study Programme D.M. 270/04 Anthropology, Religions, Oriental Civilizations (code 8493)

		Registered students	% withdrawals	% passages and transfers	% repeating students	Students enrolled in the second year
Students 2011/2012	Study Programme	283	18,7%	5,3%	1,1%	212
	Average of similar Study Programmes	263,1	17,3%	6,1%	0,5%	200,4

D.2.2. REGULAR GRADUATES

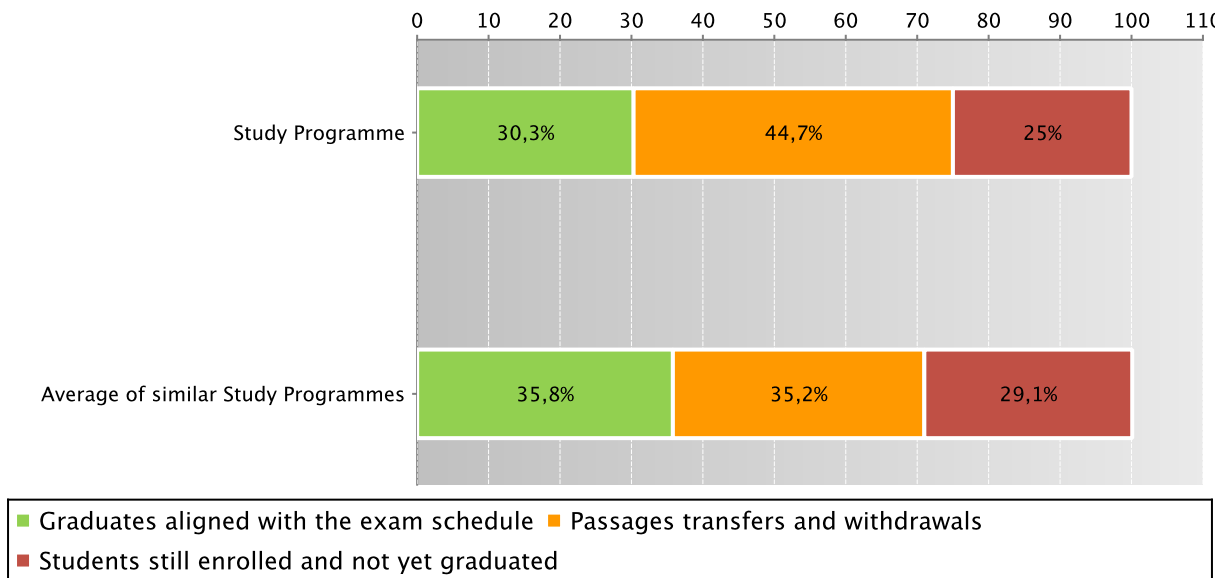
Here you will find information on regular graduates, on how many students, at the end of the regular programme duration, left the programme and how many are still enrolled but **not aligned to the exam schedule**.

The **graph** and the **table** show the situation concerning **registered students** for the indicated academic year, at the end of the regular duration of the Study Programme, highlighting the percentage of regular graduates, the number of students still enrolled (**not aligned to the exam schedule** and **repeating students**), students who have left the programme (including **passages**, **transfers** and **withdrawals**).

The Study Programme data is compared with the average of **similar Study Programmes** (which belong to the same group) for students registered in the indicated academic years.

Situation of students 2009/2010 at the end of regular duration of the study programme

Data of the Study Programme D.M. 270/04 Anthropological Sciences (code 0959)



Data of the Study Programme D.M. 270/04 Anthropological Sciences (code 0959)

	Registered students	Regular graduates		Passages transfers and withdrawals		Students still enrolled and not yet graduated		
		N.	%	N.	%	N.	%	
Students 2008/2009	Study Programme	129	52	40,3%	34	26,4%	43	33,3%
	Average of similar Study Programmes	188,1	66,7	35,4%	63,1	33,5%	58,3	31,0%
Students 2009/2010	Study Programme	132	40	30,3%	59	44,7%	33	25,0%
	Average of similar Study Programmes	189,8	67,9	35,8%	66,7	35,2%	55,2	29,1%

See data of previous academic years – Study Programme D.M. 509/99 Anthropological Sciences (code 0344) [paragraph D.5.2.2.](#)

D.2.3. ADDITIONAL DATA ON REGULARITY OF STUDIES

D.2.3.1. CREDITS OBTAINED BY STUDENTS IN THE 1ST YEAR

This offers an insight into how regularly students pass their exams.

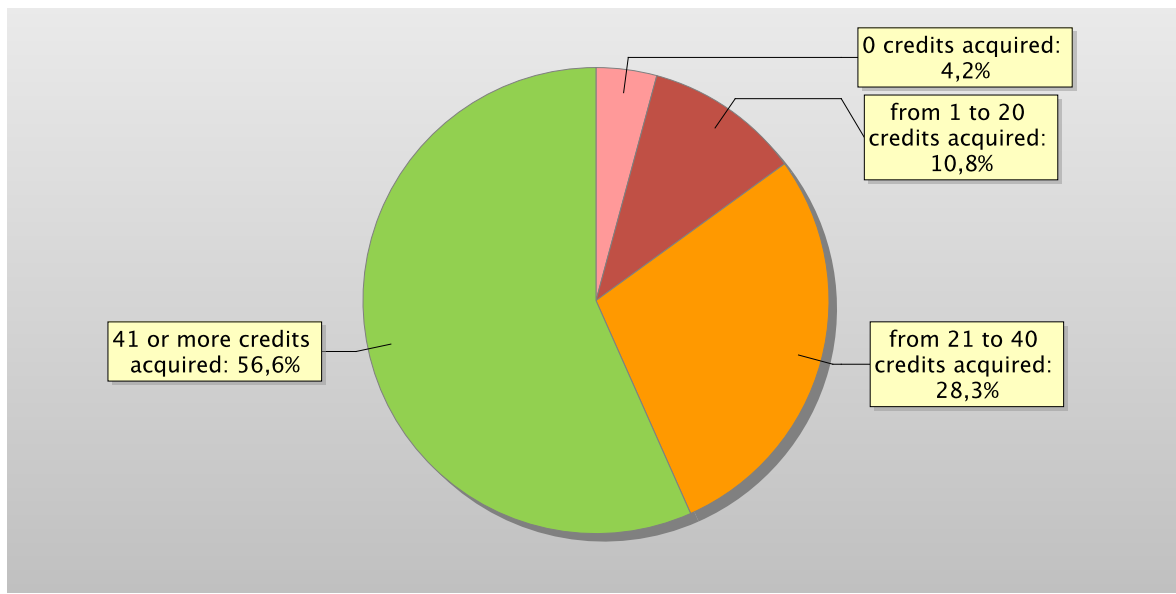
The **graph** shows the distribution of the students according to the number of **credits** obtained at the end of the first year.

In addition, the **table** shows the number of students registered at the second year and average **credits** obtained during the first year.

The Study Programme data is compared with the average of **similar Study Programmes** (which belong to the same group) for the indicated academic years.

Distribution of the students in 2011/2012 according to the number of credits obtained at the end of the first year*

Data of the Study Programme D.M. 270/04 Anthropology, Religions, Oriental Civilizations (code 8493)



Data of the Study Programme D.M. 270/04 Anthropological Sciences (code 0959)

		Students enrolled in the 2nd year	% students with *				Average credits per student
			0 credits acquired	from 1 to 20 credits acquired	from 21 to 40 credits acquired	41 or more credits acquired	
Students 2009/2010	Study Programme	97	4,1%	16,5%	20,6%	58,8%	40,7
	Average of similar Study Programmes	148,9	3,5%	11,2%	30,7%	54,6%	40,2
Students 2010/2011	Study Programme	104	1,9%	8,7%	26,0%	63,5%	43,9
	Average of similar Study Programmes	172,5	3,7%	9,8%	31,0%	55,6%	40,6

Data of the Study Programme D.M. 270/04 Anthropology, Religions, Oriental Civilizations (code 8493)

		Students enrolled in the 2nd year	% students with *				Average credits per student
			0 credits acquired	from 1 to 20 credits acquired	from 21 to 40 credits acquired	41 or more credits acquired	
Students 2011/2012	Study Programme	212	4,2%	10,8%	28,3%	56,6%	39,4
	Average of similar Study Programmes	200,4	2,9%	8,7%	29,0%	59,4%	42

*Note: by convention, credits are considered to be obtained by students by 31st October of the year following the year of enrolment.

D.2.3.2. EXAMS PASSED AND AVERAGE GRADE

The **table** shows number of exams passed and average grade achieved for each course unit in the calendar year 2011. Marks for the exams passed are expressed out of thirty.

The data refers to the course unit code and therefore includes the various branches of the programme divided into channels or sub-groups, divided by letter.

It considers all subjects for which a grade is assigned, and therefore excludes all those to which a pass/fail score is allocated.

Data of the Study Programmes D.M. 270/04 Scienze antropologiche (code 0959), Antropologia, religioni, civiltà orientali (code 8493)

	N. of exams passed	Average grade *
00045 ANTROPOLOGIA CULTURALE	19	27,4
00345 ESTETICA	25	28,3
00388 FILOSOFIA DELLA SCIENZA	23	26,3
00393 FILOSOFIA MORALE	32	28,4
00555 LETTERATURA CRISTIANA ANTICA	3	
00562 LETTERATURA ITALIANA	85	25,6
00932 STORIA CONTEMPORANEA	158	26,7
00961 STORIA DELLA FILOSOFIA	15	29,3
04349 EBRAICO	6	30
04402 STORIA DELLA FILOSOFIA CONTEMPORANEA	22	26,4
10283 FILOSOFIA DEL LINGUAGGIO (1)	8	26,1
10544 FILOGIA ED ESEGESI NEOTESTAMENTARIA (1)	2	
11055 EBRAICO (1)	14	29,7
11409 ARCHEOLOGIA CRISTIANA (1)	1	
11684 ETNO-ANTROPOLOGIA DELLE RELIGIONI (1)	103	29
11776 STORIA GRECA (1)	2	
11779 STORIA MEDIEVALE (1)	8	28,6
11845 STORIA ROMANA (1)	1	
12142 STORIA DELLA SCIENZA (1)	63	27,3

	N. of exams passed	Average grade *
12646 SINOLOGIA (1)	9	25,7
12648 SOCIOLOGIA (1)	18	27,6
12651 ANTROPOLOGIA POLITICA	114	27,9
12755 STORIA DEI PAESI ISLAMICI (1)	28	27,2
12852 STORIA DEL CRISTIANESIMO (1)	2	
12871 PEDAGOGIA GENERALE (1)	12	28,5
12967 RELIGIONI DEL MONDO CLASSICO (1)	56	29,3
13268 LINGUA FRANCESE (1)	8	28,8
13271 LINGUA INGLESE (1)	22	25,3
13275 LINGUA LATINA (1)	1	
13282 LETTERATURA LATINA (1)	13	27,5
13473 LETTERATURA CRISTIANA ANTICA (1)	4	
13515 GLOTTOLOGIA (1)	1	
13620 INDOLOGIA (1)	23	28,1
13697 ISLAMISTICA (1)	18	27,9
13710 GEOGRAFIA (1)	19	28,2
13753 STORIA DELLE RELIGIONI (1)	10	28
14432 STORIA MODERNA E CONTEMPORANEA DELL'AFRICA (1)	50	29,2
14434 STORIA MODERNA E CONTEMPORANEA DELL'ASIA (1)	2	
15951 RELIGIONI DEL MONDO CLASSICO	8	28
19203 PSICOLOGIA COGNITIVA (1)	9	27,8
27173 STORIA E CULTURA DELLA CHIESA ORTODOSSA (1)	2	
27195 STORIA, SOCIETÀ E FAMIGLIA	13	27,4
27277 STORIA DELLE CHIESE (1)	26	28,1
27294 STORIA DELLE CHIESE	8	29,4
27306 FILOSOFIE DELL'INDIA E DELL'ASIA ORIENTALE (1)	162	27,1
27307 LETTERATURA E CIVILTÀ GRECA (1)	9	29,2
27309 ANTROPOLOGIA SOCIALE (1)	103	28,5
27310 TECNICHE DELLA RICERCA ETNOGRAFICA ED ETNOSTORICA	67	28
33708 CIVILTÀ INDIGENE MESOAMERICANE	9	29,2
39443 CIVILTÀ INDIGENE D'AMERICA (1)	135	28,6
39484 CIVILTÀ INDIGENE D'AMERICA	108	28,9
41822 CINEMATOGRAFIA DOCUMENTARIA E SPERIMENTALE (1)	10	28,9
42211 INGLESE 1	51	27,2
42212 INGLESE 2	1	
42412 PSICOLOGIA DELLA MEMORIA (1)	9	27,2
42549 STORIA DELLE DONNE E DI GENERE	2	
42571 INTRODUZIONE ALLO STUDIO DELLE RELIGIONI	218	28
49485 ANTROPOLOGIA DELLA SCRITTURA (1)	6	26,2
58501 STORIA E ISTITUZIONI DELLA CHIESA ORTODOSSA (1)	5	
66945 ANTROPOLOGIA CULTURALE (C.I.)	209	26,4
66954 CULTURA E LINGUA ARMENA (1)	1	
66962 CINESE 1	27	27

	N. of exams passed	Average grade *
66964 ARABO 1	24	29,5
66965 PERSIANO 1	4	
66967 GIAPPONESE 1	20	28,7
66982 SANSKRITO 1	6	29,2
66984 LINGUE E CULTURE DELL'ETIOPIA 1	11	29,9
66986 PORTOGHESE 1	9	27,8
66987 FRANCESE 1	11	26,3
66988 SPAGNOLO 1	24	27,6

* Note: no average grade is given if the number of exams passed is less than or equal to 5.

D.3. OPINIONS OF GRADUATES AND ATTENDING STUDENTS

Opinions of graduates on the Study Programme.

Tables and graphs provide information on the number of graduates who expressed positive opinions on the Study Programme, focusing on opinions expressed by attending students on course units.

D.3.1. OPINION OF GRADUATES

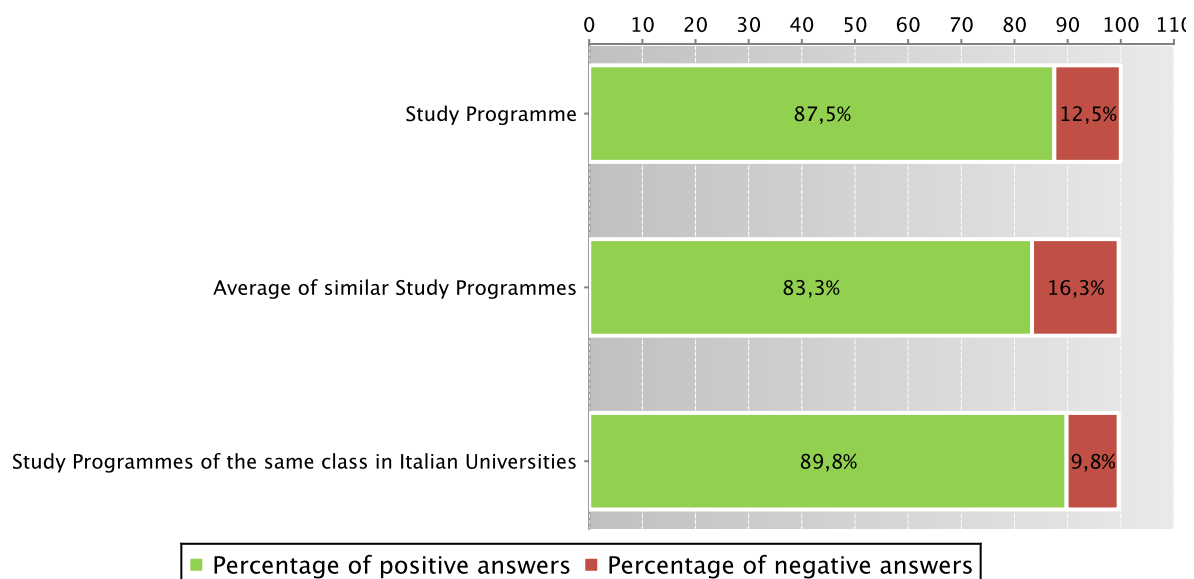
The **graph** shows the percentage of graduates (*AlmaLaurea* survey) who responded positively to the question: “**Are you generally satisfied with the Study Programme**”.

In addition, the **table** shows the percentage of students who answered “Yes, to the same programme at the university” to the question “Would you register again to the university?”.

The Study Programme data is compared with the average of **similar Study Programmes** (which belong to the same group), and the average of Study Programmes of the same **class** of other Italian universities for the graduates of the indicated years.

Graduates in 2012 who responded positively to the question: “Are you generally satisfied with this Study Programme?”

Data of the Study Programme D.M. 270/04 Scienze antropologiche (code 0959)



Data of the Study Programme D.M. 270/04 Scienze antropologiche (code 0959)

		N. graduates	Completed Questionnaires	% of positive answers to the question: "Are you generally satisfied with this Study Programme?"	% of answers "yes to the same Programme in the same University" to the question "Would you register again to the University"
2011	Study Programme	39	33	87,9%	78,8%
	Average of similar Study Programmes	70,9	65,6	81,3%	63,8%
	Study Programmes of the same class in Italian Universities	223	202	90,6%	78,2%
2012	Study Programme	84	80	87,5%	68,8%
	Average of similar Study Programmes	72,1	68,4	83,3%	67,0%
	Study Programmes of the same class in Italian Universities	547	502	89,8%	72,7%

Symbols:

(*) The opinions of the Study Programmes with less than 5 graduates are not shown.

Further information on [Graduates' Profile Report](#).

See data of previous academic years – Study Programme D.M. 509/99 Anthropological Sciences (code 0344) [paragraph D.5.3.1](#).

D.3.2 ADDITIONAL DATA ON OPINIONS OF STUDENTS

D.3.2.1. OPINION OF ATTENDING STUDENTS

The **graph** shows the percentage of attending students who responded positively to the question in the questionnaire: “Are you generally satisfied with this course unit?” in academic year 2011/2012.

The **table** also shows the number of completed questionnaires.

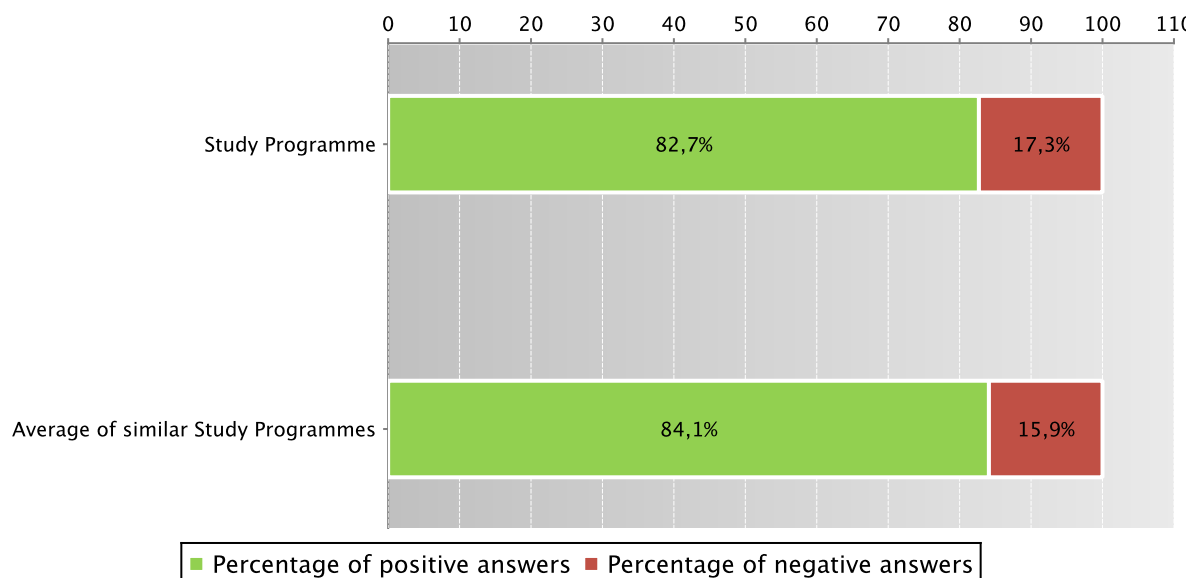
The Study Programme data is compared with the [average of similar Study Programmes \(which belong to the same group\)](#), for the indicated academic years.

The data concerning the students' opinion refers to the opinions of those attending lessons, whether they are enrolled in the current programme or a Study Programme running under pre-reform regulations (under D.M. 509).

For the University of Bologna the survey and subsequently analysis of the opinions of students attending the course is cared by Academic Affairs Division - Quality Assurance Department and Control and Finance Division - Support Planning and Evaluation Department. The overall results and the methods of collection and analysis are described in the document published online on the [Statistical Observatory of the University of Bologna](#) (see the note in the glossary).

Students who responded positively to the question: “Are you generally satisfied with this course unit?” in academic year 2011/2012

Data of the Study Programmes D.M. 270/04 Scienze antropologiche (code 0959), Antropologia, religioni, civiltà orientali (code 8493) and of the Study Programme D.M. 509/99 Scienze antropologiche (code 0344)



Data of the Study Programmes D.M. 270/04 Scienze antropologiche (code 0959), Antropologia, religioni, civiltà orientali (code 8493) and of the Study Programme D.M. 509/99 Scienze antropologiche (code 0344)

		Number of completed questionnaires	% of positive answers concerning the general satisfaction with the course unit – Question 19
a.y. 2009/2010	Study Programme	593	82,1%
	Average of similar Study Programmes	1529,9	83,6%
a.y. 2010/2011	Study Programme	662	86,1%
	Average of similar Study Programmes	1445,9	83,8%
a.y. 2011/2012	Study Programme	1356	82,7%
	Average of similar Study Programmes	1839,3	84,1%

Symbols:

(*) When there is a small number of questionnaires, the percentage of positive opinions on overall satisfaction is not presented.

Further information on [Rapporto Opinione degli studenti frequentanti sulle attività didattiche](#) (the content is in Italian).

D.4. ENTRY INTO THE WORLD OF WORK

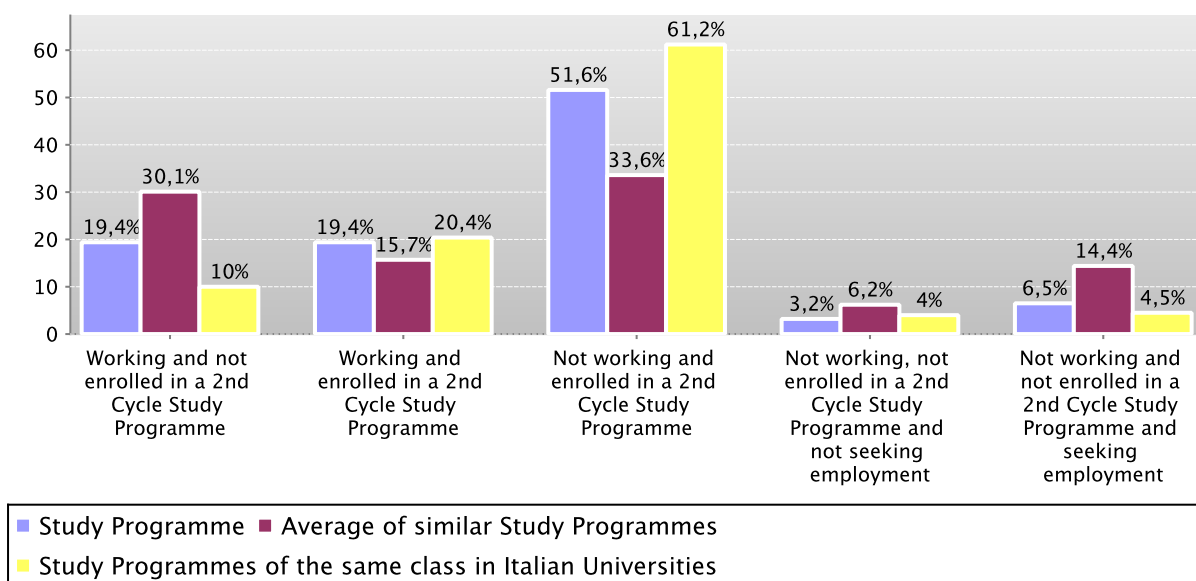
Employment situation of graduates of the Study Programme.

Tables and graphs provide information on the employment situation of graduates one year after graduating.

D.4.1. EMPLOYMENT SITUATION

Employment situation of graduates in 2011 one year after graduating

Data of the Study Programme D.M. 270/04 Anthropological Sciences (code 0959)



		N. graduates interviewed	Employment and education situation (1)					Not working, not seeking employment, but following a university programme/traineeship (2)	Degree's appropriateness for the job (referred to the graduates who just work) (3)	
			Working and not enrolled in a 2nd Cycle Study Programme	Working and enrolled in a 2nd Cycle Study Programme	Not working and enrolled in a 2nd Cycle Study Programme	Not working, not enrolled in a 2nd Cycle Study Programme and not seeking employment	Not working and not enrolled in a 2nd Cycle Study Programme and seeking employment		Effective / very effective	Quite effective
Graduation Year 2011	Study Programme	31	19,4%	19,4%	51,6%	3,2%	6,5%	32,3%	33,3%	
	Average of similar Study Programmes	61,3	30,1%	15,7%	33,6%	6,2%	14,4%	26,9%	27,8%	
	Study Programmes of the same class in Italian Universities	201	10,0%	20,4%	61,2%	4,0%	4,5%	49,3%	33,9%	

See data of previous academic years – Study Programme D.M. 509/99 Anthropological Sciences (code 0344) [paragraph D.5.4.1.](#)

D.5. INFORMATION ON PRE-REFORM PROGRAMMES (DM 509/99)

D.5.1. STUDENTS STARTING THEIR UNIVERSITY CAREERS

Characteristics of incoming students at the beginning of their university careers. Tables and graphs provide information on the number of registered students, focusing on the characteristics of the students, results of any entrance tests and students assigned additional learning requirements.

D.5.1.1. ENROLMENTS AND REGISTRATIONS

Data of enrolments and registrations of the last three academic years are shown in [paragraph D.1.1.](#)

D.5.1.2. ADDITIONAL DATA ON STUDENTS' STARTING THEIR UNIVERSITY CAREERS

D.5.1.2.1. CANDIDATES REGISTERED FOR THE ENTRANCE EXAM

Data of candidates registered for the entrance exam are shown in [paragraph D.1.2.1.](#)

D.5.1.2.2. INCOMING STUDENTS

Data of incoming students of the last three academic years are shown in [paragraph D.1.2.2.](#)

D.5.2. REGULARITY OF STUDIES

Insight into the regularity with which the students pass their exams.

Graphs and tables provide information on the number of students who leave the programme after the first year and the number of regular graduates, focusing on the number of credits obtained at the end of the first year, the number of exams passed and the average grade achieved for each course unit.

D.5.2.1. STUDENTS LEAVING THE PROGRAMME BETWEEN YEARS 1 AND 2

Data of students leaving the Study Programme of the last three academic years are shown in [paragraph D.2.1.](#)

D.5.2.2. REGULAR GRADUATES

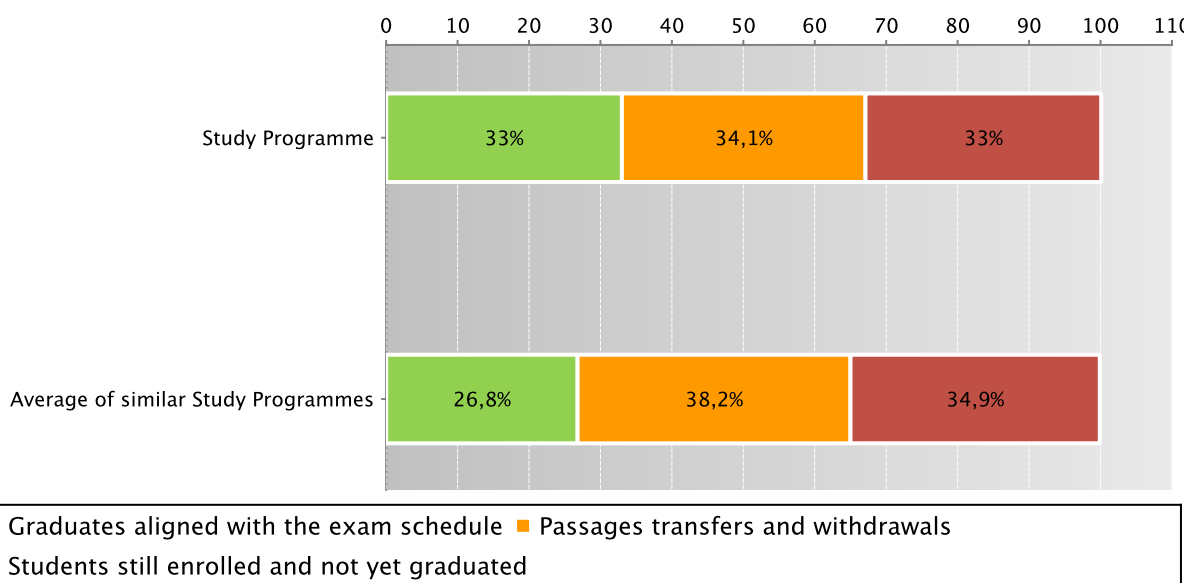
Here you will find information on regular graduates, on how many students, at the end of the regular programme duration, left the programme and how many are still enrolled but not aligned to the exam schedule.

The **graph** and the **table** show the situation concerning **registered students** for the indicated academic year, at the end of the regular duration of the Study Programme, highlighting the percentage of regular graduates, the number of students still enrolled (**not aligned to the exam schedule** and **repeating** students), students who have left the programme (including **passages**, **transfers** and **withdrawals**).

The Study Programme data is compared with the average of similar Study Programmes (which belong to the same group) for students registered in the indicated academic years.

Situation of students 2007/2008 at the end of regular duration of the study programme

Data of the Study Programme D.M. 509/99 Anthropological Sciences (code 0344)



Data of the Study Programme D.M. 509/99 Anthropological Sciences (code 0344)

	Registered students	Regular graduates		Passages transfers and withdrawals		Students still enrolled and not yet graduated	
		N.	%	N.	%	N.	%
Students 2007/2008	Study Programme	185	33,0%	63	34,1%	61	33,0%
	Average of similar Study Programmes	175	26,8%	67	38,2%	61,1	34,9%

Go back to D.2.2. Regular graduates

D.5.2.3. ADDITIONAL DATA ON REGULARITY OF STUDIES

D.5.2.3.1. CREDITS OBTAINED BY STUDENTS IN THE 1ST YEAR

Data of credits obtained by students in the 1st year of the last three academic years are shown in paragraph D.2.3.1.

D.5.2.3.2. EXAMS PASSED AND AVERAGE GRADE

Data of exams passed and average grade are shown in paragraph D.2.3.2.

D.5.3. OPINIONS OF ATTENDING STUDENTS AND GRADUATES

Opinions of graduates on the Study Programme.

Tables and graphs provide information on the number of graduates who expressed positive opinions on the Study Programme, focusing on opinions expressed by attending students on course units.

D.5.3.1. OPINION OF GRADUATES

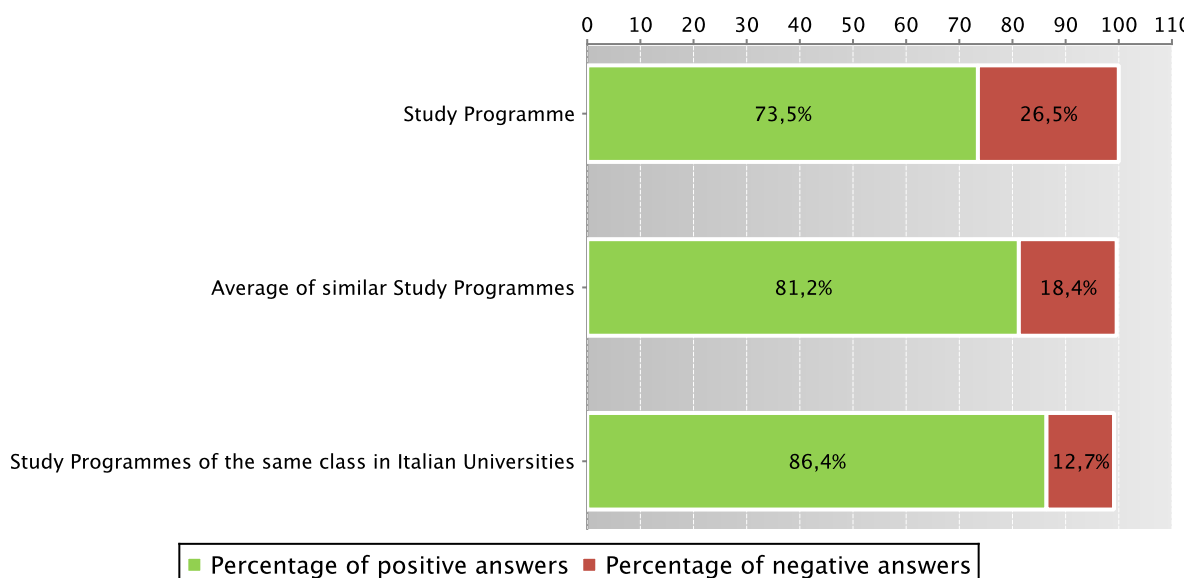
The **graph** shows the percentage of graduates (AlmaLaurea survey) who responded positively to the question: “**Are you generally satisfied with the Study Programme**”.

In addition, the **table** shows the percentage of students who answered “Yes, to the same programme at the university” to the question “Would you register again to the university?”.

The Study Programme data is compared with the average of similar Study Programmes (which belong to the same group), for the indicated years.

Graduates in 2010 who responded positively to the question: “Are you generally satisfied with this Study Programme?”

Data of the Study Programme D.M. 509/99 Scienze antropologiche (code 0344)



Data of the Study Programme D.M. 509/99 Scienze antropologiche (code 0344)

		N. graduates	Completed Questionnaires	% of positive answers to the question: “Are you generally satisfied with this Study Programme?”	% of answers “yes to the same Programme in the same University” to the question “Would you register again to the University”
2010	Study Programme	156	132	73,5%	56,8%
	Average of similar Study Programmes	114,7	103	81,2%	63,5%
	Study Programmes of the same class in Italian Universities	1512	1338	86,4%	71,4%

Symbols:

(*) The opinions of the Study Programmes with less than 5 graduates are not shown.

Further information on [Graduates’ Profile Report](#).

Go back to [D.3.1. Opinion of graduates](#)

D.5.3.2 ADDITIONAL DATA ON OPINIONS OF STUDENTS

D.5.3.2.1. OPINION OF ATTENDING STUDENTS

Data of opinion of attending students of the last three academic years are shown in paragraph D.3.2.1.

D.5.4. ENTRY INTO THE WORLD OF WORK

Employment situation of graduates of the Study Programme.

Tables and graphs provide information on the employment situation of graduates one year after graduating.

D.5.4.1. EMPLOYMENT SITUATION

The paragraph shows the employment situation of graduates one year after graduating.

The data is taken from the [AlmaLaurea](#) reports on the employment situation of graduates.

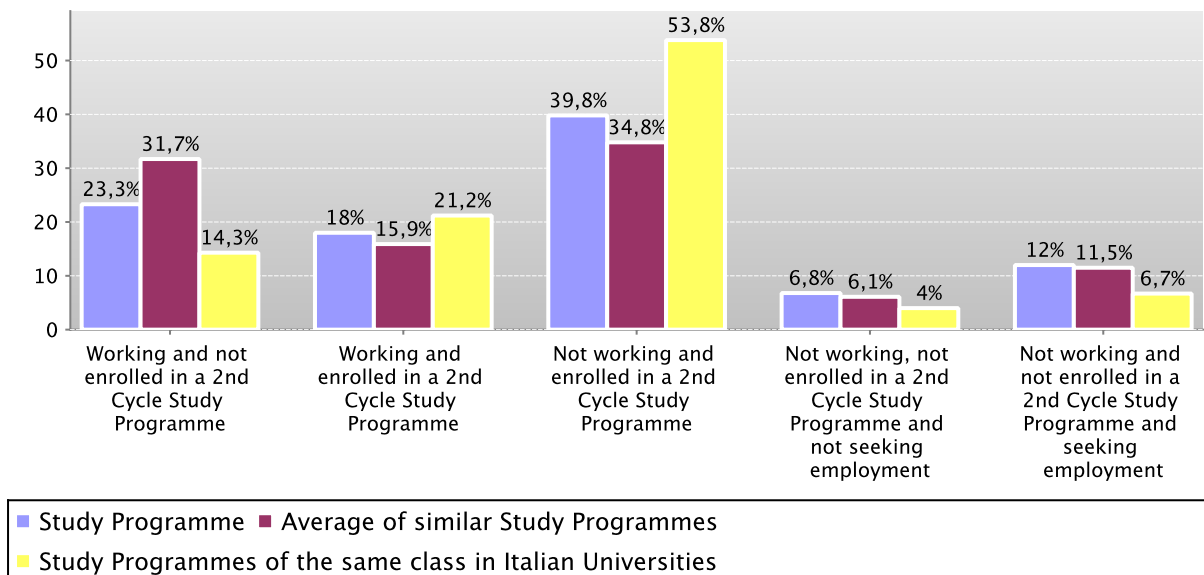
The **graph** shows who is working, who is not working but has enrolled in a Second Cycle study programme, who is not working and is not seeking employment, who is not working but is seeking employment.

In addition, the **table** shows the number of graduates interviewed, the number involved in internships and traineeships and the appropriateness of their degree to the job.

The Study Programme data is compared with the average of similar Study Programmes (which belong to the same group) and the average of Study Programmes of the same faculty of other Italian universities for the graduates of the indicated years.

Employment situation of graduates in 2010 one year after graduating

Data of the Study Programme D.M. 509/99 Anthropological Sciences (code 0344)



		N. graduates interviewed	Employment and education situation (1)					Not working, not seeking employment, but following a university programme/traineeship (2)	Degree's appropriateness for the job (referred to the graduates who just work) (3)	
			Working and not enrolled in a 2nd Cycle Study Programme	Working and enrolled in a 2nd Cycle Study Programme	Not working and enrolled in a 2nd Cycle Study Programme	Not working, not enrolled in a 2nd Cycle Study Programme and not seeking employment	Not working and not enrolled in a 2nd Cycle Study Programme and seeking employment		Effective / very effective	Quite effective
Graduation Year 2009	Study Programme	165	18,8%	15,2%	48,5%	8,5%	9,1%	43,0%	9,4%	15,1%
	Average of similar Study Programmes	117,8	30,0%	17,9%	35,5%	5,8%	10,8%	28,8%	33,7%	28,1%
	Study Programmes of the same class in Italian Universities	1412	14,4%	22,7%	52,2%	4,5%	6,2%	38,7%	13,5%	25,3%
Graduation Year 2010	Study Programme	133	23,3%	18,0%	39,8%	6,8%	12,0%	33,1%	9,1%	18,2%
	Average of similar Study Programmes	97	31,7%	15,9%	34,8%	6,1%	11,5%	26,7%	32,4%	25,8%
	Study Programmes of the same class in Italian Universities	1304	14,3%	21,2%	53,8%	4,0%	6,7%	40,0%	14,1%	29,3%

Symbols:

(*) The opinions of the Study Programmes with less than 5 graduates are not shown.

Notes on the AlmaLaurea report on the employment situation of graduates

(1) "Employment and education situation": the number of employed graduates is the sum of those working and those working who are also enrolled in a 2nd cycle degree programme. The number of those enrolled in a 2nd cycle degree programme is the sum of those who are working and studying and those who are only studying.

(2) "Number of those who do not work, who are not seeking employment but who are following a university programme/traineeship": the definition includes those who are enrolled in traineeships, PhD degrees, specialisation schools, Italian "master universitari" (first and second level). The presentation of this data complies with article 2 of D.M. 544 of 31st October 2007, as later provided for in Management Decree no. 61 of 10th June 2008 (transparency requirements).

(3) The evaluation of the appropriateness of the degree is obtained by a combination of the requirement of the relative qualification for the job held and the level of usage of the skills learned at university.

Further information on [Graduates' Employment report](#).

Go back to [D.4.1. Employment situation](#)

E. FIND OUT MORE: THE QUALITY OF YOUR STUDY PROGRAMME

The University of Bologna has identified its objectives as the *personal, cultural and professional growth of students and the improvement of the quality of learning, also in relation to the needs of society* (Strategic Plan 2010-2013).

Students, employers and society as a whole, have the right to effective learning for individual and intellectual growth, to develop critical sense and to prepare for the world of work.

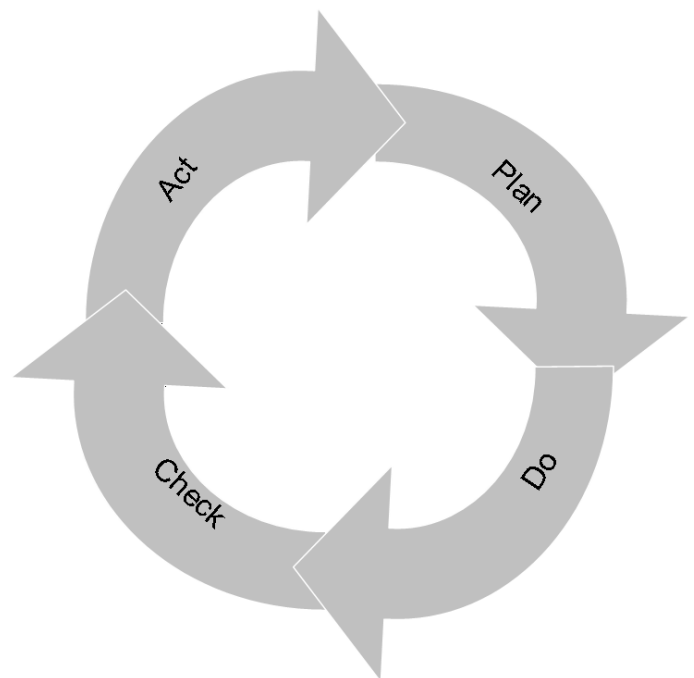
In the Statute and the Strategic Plan 2010-2013 the University of Bologna acknowledges its responsibility in guaranteeing the quality of its study programmes, and for this purpose adopts an "internal quality assurance system".

The Internal Quality Assurance system

The internal quality assurance system is a set of processes and responsibilities adopted to guarantee the quality of Study Programmes at the University of Bologna.

The guarantee of the quality of a Study Programme is the correspondence of the results achieved with the set objectives, in the following phases:

- Plan: defining the objectives
- Do: implementing the planned actions
- Check: checking that the objectives have been achieved
- Act: planning improvement action



This path responds to the expectations of students, guides teaching behaviour and provides indicators for the assessment of results. Self-assessment is based on the analysis of significant data (for example, the number of students graduating in line with the exam schedule, students' opinions and the employment rates of graduates) and highlights strengths and weaknesses in order to reflect on the achieved results, critically consider one's own working methods and take steps for the continual improvement of the Programme. This path involves all educational stakeholders, including students, in order to make use of the contributions of everyone with first-hand knowledge of the Study Programme. Improvement is therefore a day to day development, concerning all aspects of teaching: from the lesson timetable to the publication of on-line programmes, from classroom management to exam methods, and the actual design of the Programme.

This is what happens in each phase:

- **Planning:** the Study Programme is the result of a proposal from the teaching structures and approved by the Academic Bodies.
- **Management:** Schools, Departments and Study Programmes manage the activities required to ensure teaching. The activities are organised as follows:

What we do	Who does what				
	Professors	Study Programme	Schools	Departments	General Administration
Teaching calendar, lessons programme and exam schedules			x		
Management of financial resources			x	x	
Classroom teaching	x				
Management of classrooms and laboratories			x	x	
Libraries and study rooms			x	x	
Approval of individual study plans		x			
Communication and information		x	x		Academic Affairs Division
Guidance service		x	x		Academic Affairs Division
Internships		x	x		Academic Affairs Division
Administrative services: Student Administration Office					Academic Affairs Division
Administration services: Degree programme office			x		Academic Affairs Division
Study grants and loans ad honorem					Academic Affairs Division
Student mobility: university subsidies and programmes					International Relations Division
Mobility: study grants for dissertations abroad			x		
Mobility: authorisations and recognitions		x			
Other students support services		x	x		x

- **Internal assessment:** every Study Programme periodically assesses its own results, evaluating, for example, the number of enrolled students, the number of withdrawing students, student opinions etc.; in this way, the strengths and weaknesses, as well as any implemented improvement actions, are highlighted. This phase is organised as follows:

What we do	Who does what
<p>Definition, gathering and publication of evaluation data According to the general guidelines of the University and national and international standards, are defined the tools through which should be evaluated the results (indicators). The survey data to be evaluate are published every year on the Report of the Study Program.</p>	<p>Academic Bodies</p>
<p>Self-Assessment The Schools and Study Programmes assess the effectiveness of the previously adopted solutions, analyse the progress of their learning activities and draw up proposals for improvement.</p>	<p>Schools and Study Programmes</p>
<p>Internal audit</p> <p>The results of the self-assessment process are reviewed in the following phases:</p> <ul style="list-style-type: none"> • Analysis: the University Quality Manager analyses the review documents, considering the ability to identify problems, propose solutions and the overall development of the internal quality assurance system. • Review: The observations on the results obtained and the good practices adopted are examined together with the persons in charge of the Schools and Study Programmes in meetings organised by scientific-disciplinary field. The persons in charge receive the observations and inputs on the areas for development and the actions to be adopted in future to improve results. • Sharing: the conclusions of the review activities are submitted to the Academic Bodies and the University Evaluation Board. 	<p>Quality Manager</p> <p>Vice Rector for Teaching and Education</p> <p>Academic Bodies</p>
<ul style="list-style-type: none"> • Improvement: on the basis of the results of the internal audit, the Schools and Study Programmes plan improvement activities, to ensure that the Study Programmes increasingly respond to the needs of society. The cycle then starts over again, with the definition of actions to be implemented, the results of which are in turn verified, in a continuous path that guarantees the quality of education. 	

F. GLOSSARY TERMS

Additional Learning Requirements

Students enrolling in the first year of a first cycle or single cycle degree and who, following the results of the entrance exams established for each study programme, do not possess the knowledge required for access to the programme, are assigned additional learning requirements (OFA).

The OFA are fulfilled by passing an assessment test defined by the programme.

The non-fulfilment of the requirements by the date set by the Academic Bodies and published on the University Portal will lead to the re-enrolment in the first year of the programme.

AlmaLaurea

AlmaLaurea is an innovative in-line database service of graduates' curriculum vitae (1,620,000 CVs, from 53 Italian universities as of 05/07/2012), which offers a link between graduates, universities and businesses.

Created in 1994 on the initiative of the Statistical Observatory of the University of Bologna, managed by a consortium of Italian universities with the support of the Ministry of Education, University and Research, the purpose AlmaLaurea is to act as a point of contact between businesses and graduates, a reference within universities for anyone (students, businesses, etc...) working in the field of university studies, employment and the condition of young people at different levels.

Average of similar study programmes (belonging to the same group)

Average of the Study Programmes (which belong to the subject group)

Calculated average which refers to all study programmes of the same cycle which belong to the subject group.

There are four groups, composed as follows:

- **BIOMEDICAL** group: Study Programmes of the Schools of Pharmacy, Biotechnology and Sport Science; Medicine; Agriculture and Veterinary Medicine
- **SCIENTIFIC-TECHNOLOGICAL** group: Study Programmes of the Schools of Engineering and Architecture; Sciences
- **SOCIAL SCIENCES** group: Study Programmes of the Schools of Economics, Management, and Statistics; Law, Political Sciences
- **HUMANITIES** group: Study Programmes of the Schools of Arts, Humanities, and Cultural Heritage; Foreign Languages and Literatures, Interpreting and Translation; Psychology and Education

CFU University Learning Credits

University Learning Credits (CFU) were introduced under Italian Ministerial Decree no. 509/99 to comply with European legislation, and are a measurement of the volume of learning, including individual study, required of students; generally 1 CFU corresponds to 25 hours of a student's "overall learning effort".

Class

Degree classes group together study programmes of the same level and with the same key learning outcomes and available learning activities for a given number of credits and in sectors which are identified as indispensable. The features of the classes are set nationally, by Ministerial Decree, and are therefore common to all universities.

Cohort

Cohort refers to a group of students enrolled in the same academic year.

Enrolment status

In terms of enrolment, students may be:

- **Regularly enrolled:** students enrolled for as many or fewer years than the legal duration of the study programme, who do not fall into any of the following categories;
- **Not aligned with the exam schedule:** students who, without having graduated, have enrolled in all the years of the study programme and which, for programmes with compulsory attendance, have obtained all attendance certificates;
- **Repeating:** students re-enrolling in the same year of a programme again. Starting from academic year 2009-2010, students who have not fulfilled the assigned additional learning requirements within the deadline have to enrol in the 1st year as repeating students.

Entrance exam

Enrolment in a study programme may be free access or restricted access.

For all programmes with restricted access, candidates are required to sit an entrance exam and there are a limited number of places available. The entrance exam is a test which is used to draw up a graded list of candidates; students may enrol in the programme according to their place in the list. The methods of managing the call for applications and the list of candidates, including the methods for filling any unclaimed places, may vary from year to year. The test may be specific to a Degree Programme or may be part of a single exam covering several programmes from the same university or from other universities (during the registration the students should indicate their first choice).

The following definitions apply:

Available places = the number of places laid down in the call for applications to the Study Programme, or determined by subsequent legal provisions; these exclude any additional places reserved according to special provisions of the programme (e.g. for international study programmes, they do not include places for foreign students selected from other universities; for all programmes with restricted access regulated nationally, these do not include the places reserved for transferring students).

Number of candidates for the exam = number of students registered for the exam indicating the study programme as their first choice;

Number of participants in the exam = number of students participating in the exam indicating the study programme as their first choice;

Number of participants in the exam for every available place = number of students participating in the exam who indicated the study programme as their first choice as a ratio of the number of places available on the programme.

First year enrolments

This includes all students enrolled in the first year, including those joining the study programme in its first year through transferrals, as well as those enrolled in the first year but not for the first time (e.g. repeating students).

New Careers

Students who start a new university career (excluding transfers) from year one in a second cycle programme.

Passages and transfers

Passage: when a student applies to move to a different study programme from the one enrolled in the previous year, within the same university.

Transfer: when a student transfers from a study programme in one university to any programme in another university.

Registered students

Students who begin a career in the Italian University System for the first time and who enrol in the first year (i.e. for whom no previous university careers are recorded) of a First Cycle (L509, L) or Single Cycle programme (LSCU, LMCU)

Statistical Observatory of the University of Bologna

The Statistical Observatory was founded in 1997 in order to “provide the university governing bodies with a reliable and timely documentary and monitoring database aiming to promote decision-making processes and planning, particularly of learning activities and other services targeting the student population” (art.1 of the Founding and Operational Regulation). Following the disabling of the Statistical Observatory, as resolved by the Board of Governors on 14 December 2010, from the second semester of academic year 2010-11 the survey and subsequently analysis of the attending students opinion is cared for the University of Bologna by Academic Affairs Division - Quality Assurance Department and Control and Finance Division - Support Planning and Evaluation Department. The overall results and the methods of collection and analysis are described in the document published online on the [Statistical Observatory of the University of Bologna](#).

University DataWarehouse

In information service for the managers of the University of Bologna organisational departments which gathers, integrates and reorganises data from various sources and makes it available for analysis and evaluation for the purposes of planning and decision-making.

Withdrawal

Suspension of studies by students who do not register in the next academic year, or who drop out from the degree programme.