

2013



ALMA MATER STUDIORUM
UNIVERSITÀ DI BOLOGNA



School of Science, School of Pharmacy, Biotechnology and Sport Science

LAUREA (FIRST CYCLE DEGREE/
BACHELOR - 180 ECTS) IN
BIOLOGICAL SCIENCES A.Y. 2013/2014

Programme Director Prof. Valeria Franceschini

REPORT

Study Programme Report
Biological Sciences
Programme ex D.M. 270/04 - Code 8012 - Class L-13
School of Science, School of Pharmacy, Biotechnology and Sport Science
Programme Director Prof. Valeria Franceschini

Created in collaboration with Teaching and Learning Administrative Area (AFORM – Area della Formazione) – Quality Assurance Unit

Edited by AAGG – University Web Portal Division and CeSLA – Web Technology Division, with MultiPublishing technology

Release date: July 2013

Academic year of reference: 2013/2014

www.unibo.it/QualityAssuranceEn

INDICE

What is the Study Programme Report?	1
A. Presentation and prospects	2
A.1. Presentation	2
A.2. Admission requirements	2
A.3. Learning outcomes	2
A.4. Career opportunities	2
A.5. Opinion of social partners and potential employers	2
A.6. Further studies	2
B. Teaching and Learning	3
B.1. Course Structure Diagram	3
B.2. Calendar and lecture timetable	3
C. Resources and services	4
C.1. Teachers	4
C.2. Student services: offices	4
C.2.1. Future students	4
C.2.2. Enrolled students	4
C.2.3. International students	4
C.2.4. Graduates	4
D. The Study Programme in figures	5
D.1. Students starting their university careers	5
D.1.1. Enrolments and registrations	5
D.1.2. Additional data on students' starting their university careers	6
D.1.2.1. Candidates registered for the entrance exam	6
D.1.2.2. Incoming students	7
D.1.2.3. Additional Learning Requirements	8
D.2. Regularity of studies	9
D.2.1. Students leaving the Programme between years 1 and 2	9
D.2.2. Regular graduates	10
D.2.3. Additional data on regularity of studies	11
D.2.3.1. Credits obtained by students in the 1st year	11
D.2.3.2. Exams passed and average grade	12
D.3. Opinions of graduates and attending students	14
D.3.1. Opinion of graduates	14
D.3.2. Additional data on opinions of students	15
D.3.2.1. Opinion of attending students	15
D.4. Entry into the world of work	16
D.4.1. Employment situation	16
D.5. Information on pre-reform programmes (DM 509/99)	17
D.5.1. Students starting their university careers	17
D.5.1.1. Enrolments and registrations	17
D.5.1.2. Additional data on students' starting their university careers	17
D.5.1.2.1. Candidates registered for the entrance exam	17
D.5.1.2.2. Incoming students	17
D.5.2. Regularity of studies	17
D.5.2.1. Students leaving the Programme between years 1 and 2	17
D.5.2.2. Regular graduates	18
D.5.2.3. Additional data on regularity of studies	18
D.5.2.3.1. Credits obtained by students in the 1st year	18
D.5.2.3.2. Exams passed and average grade	18

D.5.3. Opinions of attending students and graduates	19
D.5.3.1. Opinion of graduates	19
D.5.3.2 Additional data on opinions of students	19
D.5.3.2.1. Opinion of attending students	20
D.5.4. Entry into the world of work	20
D.5.4.1. Employment situation	20
E. Find out more: the quality of your Study Programme	22
F. Glossary terms	25

WHAT IS THE STUDY PROGRAMME REPORT?

What is the Study Programme Report?

The Study Programme Report provides updated information which is important for the purposes of Quality Assurance and is published annually by the University of Bologna.

The main aspects of the teaching programme are described in detail, with a view to assuring the principle of transparency and promoting self-assessment and continuous improvement processes.

The document provides a concrete overview of the features and results of the Study Programme for students, families, employers and so on.

For example, regarding the current issue of employment, it describes the learning outcomes and career opportunities; it also includes statistics on the percentage of employed graduates (D.4. Employment situation).

The document is organised into five sections and a glossary:

A. Presentation and prospects

Key information on the Study Programme, including the expected learning outcomes, career opportunities and further studies.

B. Teaching and Learning

The updated course structure diagram with the full titles and listings of the course units and the latest published lecture timetable.

C. Resources and services

The list of teaching staff and their relative curricula, the offices (secretariats), services (work placements) and infrastructures (libraries, laboratories) available to students.

D. The Study Programme in Figures

Key data shows how many students are enrolled, how many have been assigned additional learning requirements, how many drop out after the first year, how many graduate in line with the programme schedule, the opinions of attending and graduating students on the teaching programmes and information concerning graduate employment.

E. Find out more: the quality of your Study Programme

How the quality system applied to your Study Programme works. The quality system of your Study Programme is a set of processes and responsibilities adopted to guarantee the quality of all Study Programmes at the University of Bologna.

NOTES:

- Reports are available for all Study Programmes for which it is possible to enrol in the first year in academic year 2012/2013: the information and data provided is as updated as possible.
- Sections A, B and C provide data for the academic year 2012/2013.
- Section D presents data regarding the Study Programmes in the last three academic years.
- The information and data were taken from the University databases and the reports published by the [Statistical Observatory of the University of Bologna](#) and [AlmaLaurea](#), and are updated to **15 June 2012**.

A. PRESENTATION AND PROSPECTS

This section presents the key information concerning the Study Programme, including the expected learning outcomes, career opportunities and further studies, updated to the academic year 2013/2014.

A.1. PRESENTATION

This paragraph provides information on the specific learning outcomes of the Study Programme and the curriculum.

This information is not available in English at this time.

A.2. ADMISSION REQUIREMENTS

This paragraph provides information on the knowledge required for admission to the Study Programme.

Applicants to the degree programme must have a five-year secondary school diploma or equivalent suitable qualification obtained abroad, or a four-year secondary school diploma including a supplementary fifth year certificate. If not achieved through the additional fifth year, the learning outcomes will be made up within the Degree Course in order to reach the abilities required.

The following knowledge and skills are also required: good general knowledge, logical reasoning and verbal comprehensions skills, basic knowledge of Mathematics.

Access to the Degree Course is restricted and so a classification of candidates, based on the results of a compulsory entry test, will be made up. The test and selection criteria will be published in detail in the related call for applications. Based on a the classification, a minimum score required for admission will be specified.

If a student does not obtain the minimum score required but is within the restricted access number, he or she will be assigned an additional educational obligation (OFA) which must be met within the first year of the Degree Course or alternatively within the terms established by the University.

Students who do not meet the obligation within the terms established will be enrolled in the following academic year but will be asked to meet the obligation within that year.

When the student passes at least two exams obtaining a regular grade out of thirty, the educational obligation is considered met.

Students with a University Degree or Diploma who enrol in a Degree Course with restricted access who come from another Degree Course or other Italian Universities will have to pass an entry test according to the terms described above.

International students can enrol in the Degree Course within the maximum limit provided by the call.

A.3. LEARNING OUTCOMES

This paragraph provides information on the knowledge and skills students will have acquired by the end of the Programme.

This information is not available in English at this time.

A.4. CAREER OPPORTUNITIES

This paragraph provides information on the occupational profile, functions and fields of employment available to graduates of this Programme.

This information is not available in English at this time.

A.5. OPINION OF SOCIAL PARTNERS AND POTENTIAL EMPLOYERS

This paragraph describes the outcome of the consultation with the representative employment and trade organisations.

This information is not available in English at this time.

A.6. FURTHER STUDIES

It gives access to second cycle studies (laurea specialistica/magistrale) and master universitario di primo livello.

B. TEACHING AND LEARNING

This section describes the updated course structure diagram (for academic year 2013/2014), with the full titles and listings of the course units and the latest published lecture timetable.

B.1. COURSE STRUCTURE DIAGRAM

The link takes you to the Study Programme course structure diagrams. You can also access to each course unit content.

- [Study plan: all course units in the programme](#)

B.2. CALENDAR AND LECTURE TIMETABLE

The links take you to the teaching calendar (exam session and final examination session) and the lecture timetable (in Italian).

- [Lecture timetable](#)
- [Exam sessions](#)
- [Final examination sessions](#)

C. RESOURCES AND SERVICES

This section provides a list of teaching staff and their relative curricula and a description of the services available to students for the academic year 2013/2014.

C.1. TEACHERS

The paragraph lists the lecturers who teach in the Study Programme: from here you can access the personal web pages of each one. Information updated to 28 May 2013 (in Italian).

Permanent teaching staff:

Abbiati, Marco	Cristino, Sandra	Guarnieri, Tiziana	Rugolo, Michela
Airoldi, Laura	Degli Esposti, Mirko	Lazzari, Maurizio	Sabatino, Piera
Alibardi, Lorenzo	Del Duca, Stefano	Luiselli, Donata	Sabelli, Bruno
Ambrosetti, Davide Carlo	Falconi, Rosanna	Mantovani, Barbara	Scarlato, Vincenzo
Avitabile, Elisa	Farabegoli, Fulvia	Martini, Simone	Tomasini, Claudia
Barbieri, Isabella	Fedi, Stefano	Marulli, Federico	Trost, Paolo Bernardo
Betti, Lucietta	Fermani, Simona	Matteuzzi, Maurizio	Turina, Maria Paola
Biondi, Stefania	Ferrari, Carlo	Miscione, Gian Pietro	Vallisneri, Maria
Bonacorsi, Daniele	Franceschini, Valeria	Panzavolta, Silvia	Venturoli, Giovanni
Boscherini, Federico	Gargiulo, Giuseppe	Paolini, Moreno	Virgili, Marco
Conte, Lucia	Ghelli, Anna Maria	Perini, Giovanni	Zannoni, Davide
Cozzi, Pier Giorgio	Giuliani Piccari, Gabriella	Pettener, Davide	

Contract teaching staff:

[Bucci, Maria Antonietta](#)
[Colacci, Annamaria](#)
[Gamberi, Fabiano](#)
[Horn, Wolfango](#)
[Pelà, Maddalena](#)

C.2. STUDENT SERVICES: OFFICES

C.2.1. FUTURE STUDENTS

The link take you to the webpage which provides specific information about the offices and the services for the future students (in Italian).

- [Future students](#)

C.2.2. ENROLLED STUDENTS

The link take you to the webpage with the information on the offices and the services for the enrolled students (in Italian).

- [Enrolled students](#)

C.2.3. INTERNATIONAL STUDENTS

The link take you to the webpage with the information on the offices and the services for the international students (in Italian).

- [International students](#)

C.2.4. GRADUATES

The link take you to the webpage with the information on the offices and the services for the graduates (in Italian).

- [Graduates](#)

D. THE STUDY PROGRAMME IN FIGURES

Information on students' starting their university careers, how many students are in line with the regular programme, opinions of students and graduates on the teaching programmes and information concerning graduate employment.

This section provides the data of the last academic years for the Study Programme (SP) and a comparison with similar Study Programmes. The University of Bologna has divided its Study Programmes into four groups:

- **BIOMEDICAL** group: Study Programmes of the Schools of Pharmacy, Biotechnology and Sport Science; Medicine; Agriculture and Veterinary Medicine
- **SCIENTIFIC-TECHNOLOGICAL** group: Study Programmes of the Schools of Engineering and Architecture; Sciences
- **SOCIAL SCIENCES** group: Study Programmes of the Schools of Economics, Management, and Statistics; Law, Political Sciences
- **HUMANITIES** group: Study Programmes of the Schools of Arts, Humanities, and Cultural Heritage; Foreign Languages and Literatures, Interpreting and Translation; Psychology and Education

The section presents the results of the Study Programme for the last three academic years.

Main data shows how many students enrolled, the number of students assigned OEA, how many drop out after the first year, how many graduate in line with the programme schedule, the opinions of attending and graduating students on the teaching programmes and information concerning graduate employment.

The information and data presented in this section, updated to 28 May 2013, were taken from University databases and [AlmaLaurea](#).

Study Programmes may be subject to degree programme system modifications from one academic year to the next, and the data provided in this section may refer to a programme with a slightly different system to the one currently running (such as programme title, course structure diagram and list of lecturers). However, indicatively the data presents the general trend of the Study Programme over the past three years.

Most of the Study Programmes running at the University of Bologna have been reformed in compliance with DM 270/04, most of them from the academic year 2008/2009. In the reports provided for these Programmes, paragraph D.5. refers to the Study Programmes as they were presented prior to the reform.

D.1. STUDENTS STARTING THEIR UNIVERSITY CAREERS

Characteristics of incoming students at the beginning of their university careers. Tables and graphs provide information on the number of **registered students**, focusing on the characteristics of the students, results of any entrance tests and the students assigned any **additional learning requirements**.

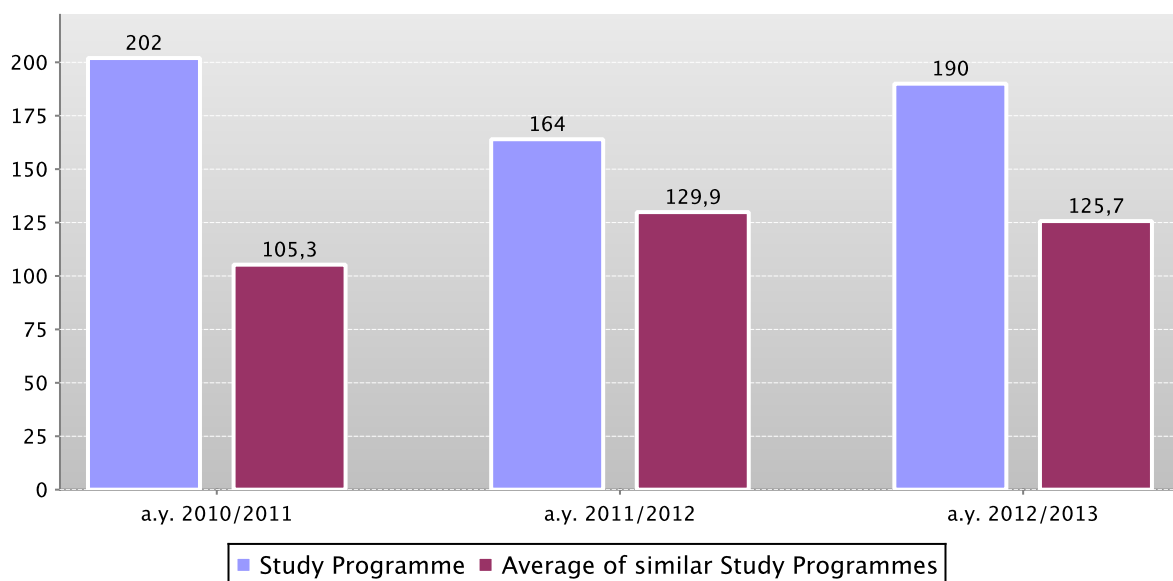
D.1.1. ENROLMENTS AND REGISTRATIONS

The **graph** shows the number of **students enrolled in the 1st year** compared with the average of similar Study Programmes (which belong to the same group).

In addition, the **table** shows the total number of **registered students** and the total number of enrolled students.

Data of the Study Programme is compared with the average of the Study Programmes of average of similar Study Programmes (which belong to the same group) for the indicated academic years.

First year enrolments



	a.y. 2010/2011			a.y. 2011/2012			a.y. 2012/2013		
	Registered students	N. first year enrolments	Total N. enrolled students	Registered students	N. first year enrolments	Total N. enrolled students	Registered students	N. first year enrolments	Total N. enrolled students
Study Programme	173	202	540	112	164	539	139	190	555
Average of similar Study Programmes	97,8	105,3	152,7	118,6	129,9	161,1	113	125,7	160,1

D.1.2. ADDITIONAL DATA ON STUDENTS' STARTING THEIR UNIVERSITY CAREERS

D.1.2.1. CANDIDATES REGISTERED FOR THE ENTRANCE EXAM

The number of students sitting the [entrance exam](#) for the Study Programme. Concerns the programmes with restricted access. The methods of managing the call for applications and the list of candidates, including the methods for filling any unclaimed places, may vary from year to year.

The **table** shows the number of places available for the study programme, the number of candidates enrolling for the exam, the number sitting the exam and the percentage of students sitting the exam compared to the number of places available.

For all programmes with restricted access, candidates are required to sit an entrance exam and there are a limited number of places available. The entrance exam is a test which is used to draw up a graded list of candidates; students may enrol in the programme according to their place in the list. The methods of managing the call for applications and the list of candidates, including the methods for filling any unclaimed places, may vary from year to year. The test may be specific to a Degree Programme or may be part of a single exam covering several programmes from the same university or from other universities (during the registration the students should indicate their first choice).

The following definitions apply:

Available places = the number of places laid down in the call for applications to the Study Programme, or determined by subsequent legal provisions; these exclude any additional places reserved according to special provisions of the programme (e.g. for international study programmes, they do not include places for foreign students selected from other universities; for all programmes with restricted access regulated nationally, these do not include the places reserved for transferring students).

Number of candidates for the exam = number of students registered for the exam indicating the study programme as their first choice;

Number of participants in the exam = number of students participating in the exam indicating the study programme as their first choice;

Number of participants in the exam for every available place = number of students participating in the exam who indicated the study programme as their first choice as a ratio of the number of places available on the programme.

	Number of places available (a)	Candidates registered for the exam	Candidates sitting the exam (b)	Number of candidates sitting the exam per place available (b/a)
a.y. 2010/2011	300	546	513	1,7
a.y. 2011/2012	220	741	685	3,1
a.y. 2012/2013	220	777	732	3,3

D.1.2.2. INCOMING STUDENTS

Geographic origin, type of high school certificate, age and gender of students.

Data shows a homogeneous group of students (cohort) which started together their academic career. Students which have passed to an other Study Programme, transferred from an other university, or registered to a 2nd degree are not included.

The tables show the number, geographic origin, gender, age, type and grade of high school certificate of students enrolling in the degree programme.

Data of the Study Programme is compared with the average of the Study Programmes of average of similar Study Programmes (which belong to the same group) for the indicated academic years.

		Registered students	Geographic origin					Gender		Average age of registered students		
			Students coming from the province of the Study Programme site	Students coming from other provinces where Unibo has a site	Students coming from other provinces of Emilia Romagna region	Students coming from other Italian regions	Students coming from abroad	M	F	19 or less	20 - 24	25 or more
Students 2010/2011	Study Programme	173	35,8%	19,7%	3,5%	41,0%		37,6%	62,4%	90,8%	6,9%	2,3%
	Average of similar Study Programmes	97,8	34,6%	20,3%	7,6%	35,2%	2,3%	69,7%	30,3%	81,6%	16,1%	2,2%
Students 2011/2012	Study Programme	112	29,5%	13,4%	0,9%	52,7%	3,6%	42,9%	57,1%	86,6%	11,6%	1,8%
	Average of similar Study Programmes	118,6	33,4%	19,0%	7,8%	37,7%	2,2%	65,1%	34,9%	79,5%	18,1%	2,4%
Students 2012/2013	Study Programme	139	32,4%	20,9%	2,9%	43,9%		36,7%	63,3%	87,8%	12,2%	
	Average of similar Study Programmes	113	30,9%	20,0%	7,9%	38,8%	2,4%	65,6%	34,4%	80,5%	17,3%	2,2%

		High school certificate					Grade of High school			
		Vocational schools	Technical Colleges	High school specializing in education and in psycho-pedagogical science	High schools specializing in classical studies, modern languages, science education	Other Italian or foreign high schools	Grade ranging from 60 to 69	Grade ranging from 70 to 79	Grade ranging from 80 to 89	Grade ranging from 90 to 100
Students 2010/2011	Study Programme	2,3%	8,1%	1,2%	82,7%	5,8%	19,7%	27,7%	26,6%	26,0%
	Average of similar Study Programmes	2,9%	29,3%	0,9%	60,8%	6,0%	19,6%	27,7%	25,0%	26,4%
Students 2011/2012	Study Programme	1,8%	4,5%	0,9%	84,8%	8,0%	16,1%	21,4%	25,0%	34,8%
	Average of similar Study Programmes	2,7%	27,9%	2,0%	61,1%	6,3%	19,6%	26,4%	24,2%	27,2%
Students 2012/2013	Study Programme	0,7%	5,0%	1,4%	79,1%	13,7%	12,9%	19,4%	29,5%	25,2%
	Average of similar Study Programmes	2,5%	27,3%	2,0%	62,3%	5,9%	17,5%	26,6%	26,5%	24,9%

D.1.2.3. ADDITIONAL LEARNING REQUIREMENTS

Students on the programme assigned **additional learning requirements** (OFA). OFA are learning requirements assigned to enrolled students who have not demonstrated the full possession of the entrance requirements. The assessment methods of students' initial preparation and the fulfilment of the OFA are described in the Study Programme Regulations, and may change each year. Students not completing the additional learning requirements are obliged to re-enrol in year 1 as repeating students.

The **table** shows the number of **registered students**, the number of students assigned OFA, the number who fulfilled them, the percentage of students assigned the OFA compared to the number of enrolled students and the percentage fulfilling the OFA compared to those assigned them.

	Registered students (a)	Students assigned OFA (b)	Students who fulfilled OFA (c)	% of students assigned OFA compared to the number of enrolled students (b/a)	% of students fulfilling the OFA compared to number of students assigned (c/b)
Students 2010/2011	173	76	66	43,9%	86,8%
Students 2011/2012	112	8	5	7,1%	62,5%
Students 2012/2013	139	23			

*Note: At the time of publication of this report the number of students fulfilling the OFA can be measured for a.y. 2009/2010 and a.y. 2010/2011 only.

D.2. REGULARITY OF STUDIES

Insight into the regularity with which the students pass their exams.

Graphs and tables provide information on the number of students who leave the programme after the first year and the number of regular graduates, focusing on the number of credits obtained at the end of the first year, on the exams passed and average grade achieved for each course unit.

D.2.1. STUDENTS LEAVING THE PROGRAMME BETWEEN YEARS 1 AND 2

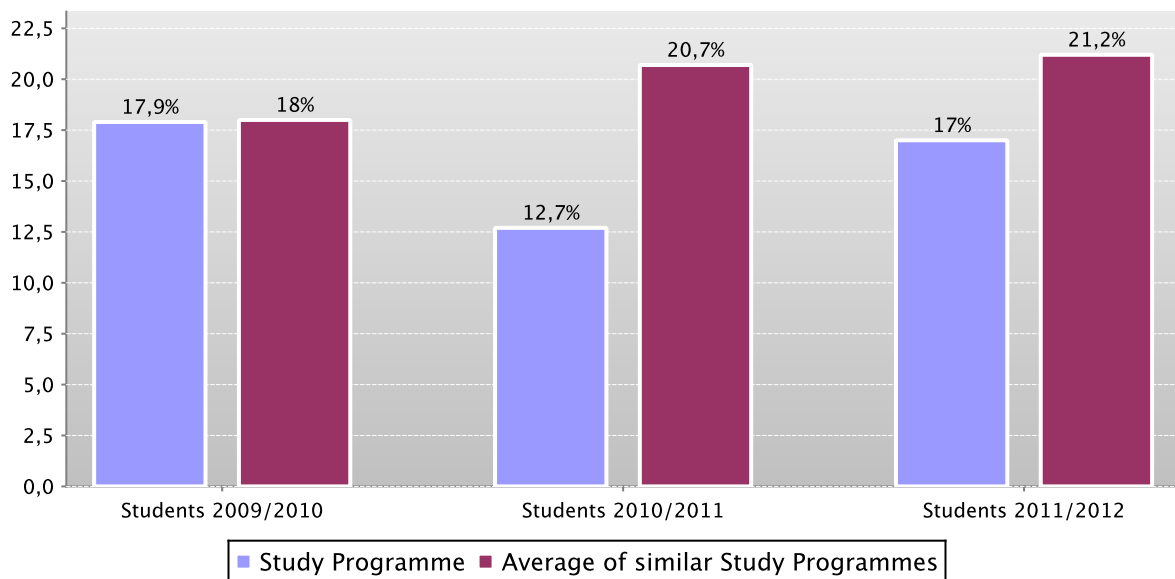
Here the number of students leaving the Study Programme is shown.

The **graph** shows the percentage of students who leave the programme after the first year compared to the average of similar Study Programmes (belonging to the same group).

The **table** shows the registered students, the percentage of students leaving the programme who pass to a different Study Programme in the same university, transfer to another university or withdraw from studies, as well as the enrolled repeating students and those enrolled in the second year.

The Study Programme data is compared with the average of similar Study Programmes of (which belong to the same group), for students registered in the indicated academic years.

Percentage of withdrawals between years 1 and 2



		Registered students	% withdrawals	% passages and transfers	% repeating students	Students enrolled in the second year
Students 2009/2010	Study Programme	296	17,9%	26,0%	2,4%	159
	Average of similar Study Programmes	86,5	18,0%	10,4%	2,3%	59,9
Students 2010/2011	Study Programme	173	12,7%	37,6%	0,0%	86
	Average of similar Study Programmes	97,8	20,7%	12,9%	2,8%	62,2
Students 2011/2012	Study Programme	112	17,0%	33,0%	0,0%	56
	Average of similar Study Programmes	118,6	21,2%	13,9%	2,0%	74,7

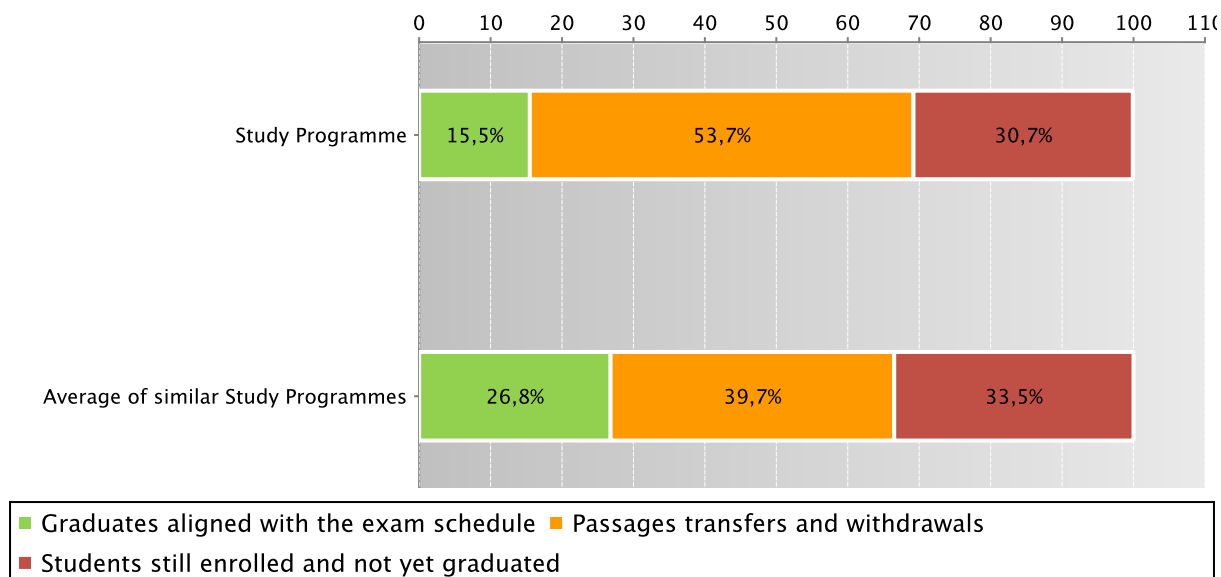
D.2.2. REGULAR GRADUATES

Here you will find information on regular graduates, on how many students, at the end of the regular programme duration, left the programme and how many are still enrolled but **not aligned to the exam schedule**.

The **graph** and the **table** show the situation concerning **registered students** for the indicated academic year, at the end of the regular duration of the Study Programme, highlighting the percentage of regular graduates, the number of students still enrolled (**not aligned to the exam schedule** and **repeating students**), students who have left the programme (including **passages**, **transfers** and **withdrawals**).

The Study Programme data is compared with the average of **similar Study Programmes** (which belong to the same group) for students registered in the indicated academic years.

Situation of students 2009/2010 at the end of regular duration of the study programme



	Registered students	Regular graduates		Passages transfers and withdrawals		Students still enrolled and not yet graduated		
		N.	%	N.	%	N.	%	
Students 2008/2009	Study Programme	283	46	16,3%	183	64,7%	54	19,1%
	Average of similar Study Programmes	77,1	19,8	25,7%	30,5	39,6%	26,8	34,8%
Students 2009/2010	Study Programme	296	46	15,5%	159	53,7%	91	30,7%
	Average of similar Study Programmes	86,5	23,2	26,8%	34,4	39,7%	29	33,5%

See data of previous academic years – Study Programme D.M. 509/99 Biological sciences (code 0091) [paragraph D.5.2.2.](#)

D.2.3. ADDITIONAL DATA ON REGULARITY OF STUDIES

D.2.3.1. CREDITS OBTAINED BY STUDENTS IN THE 1ST YEAR

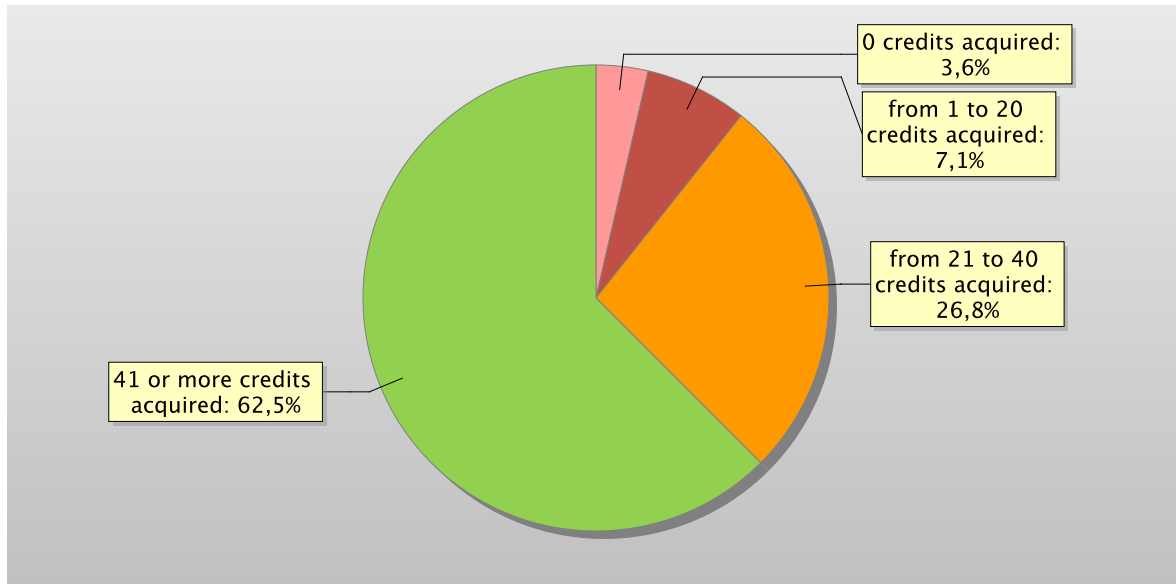
This offers an insight into how regularly students pass their exams.

The **graph** shows the distribution of the students according to the number of **credits** obtained at the end of the first year.

In addition, the **table** shows the number of students registered at the second year and average **credits** obtained during the first year.

The Study Programme data is compared with the average of **similar Study Programmes** (which belong to the same group) for the indicated academic years.

Distribution of the students in 2011/2012 according to the number of credits obtained at the end of the first year*



	Study Programme	Students enrolled in the 2nd year	% students with *				Average credits per student
			0 credits acquired	from 1 to 20 credits acquired	from 21 to 40 credits acquired	41 or more credits acquired	
Students 2009/2010	Study Programme	159	2,5%	27,7%	44,0%	25,8%	30
	Average of similar Study Programmes	59,9	4,3%	17,5%	40,5%	37,7%	33,3
Students 2010/2011	Study Programme	86	2,3%	14,0%	37,2%	46,5%	37,4
	Average of similar Study Programmes	62,2	5,1%	16,9%	40,1%	37,9%	33,1
Students 2011/2012	Study Programme	56	3,6%	7,1%	26,8%	62,5%	43,7
	Average of similar Study Programmes	74,7	5,1%	16,3%	39,0%	39,7%	33,7

*Note: by convention, credits are considered to be obtained by students by 31st October of the year following the year of enrolment.

D.2.3.2. EXAMS PASSED AND AVERAGE GRADE

The **table** shows number of exams passed and average grade achieved for each course unit in the calendar year 2011. Marks for the exams passed are expressed out of thirty.

The data refers to the course unit code and therefore includes the various branches of the programme divided into channels or sub-groups, divided by letter.

It considers all subjects for which a grade is assigned, and therefore excludes all those to which a pass/fail score is allocated.

Data of the Study Programme D.M. 270/04 Scienze biologiche (code 8012)

	N. of exams passed	Average grade *
00061 BIOCHIMICA	106	25,5
00248 ECOLOGIA	104	25,5
00351 FARMACOLOGIA	25	24,5
00388 FILOSOFIA DELLA SCIENZA	7	29,4
00443 FISIOLOGIA GENERALE	95	23,9
00451 GENETICA	79	26,7
00498 IGIENE	44	27,3
00768 PATOLOGIA GENERALE	44	25,7
02464 BIOLOGIA UMANA	36	27,7
03766 IMMUNOLOGIA	1	
04638 BIOCHIMICA CELLULARE	39	26,9
07177 ECOLOGIA APPLICATA	1	
07970 ZOOLOGIA DEI VERTEBRATI	19	27,6
08211 ECOFISIOLOGIA VEGETALE	24	26,4
08236 ELEMENTI DI PATOLOGIA VEGETALE	22	28,2
08383 MICROBIOLOGIA GENERALE (C.I.)	108	25,4
08664 GENETICA MOLECOLARE	26	23,8
12818 BIOLOGIA VEGETALE	2	
12942 FISIOLOGIA MOLECOLARE DELLE PIANTE	32	24,8
12946 BIOLOGIA MOLECOLARE	95	25,5
13395 BOTANICA EVOLUZIONISTICA	24	27,3
18608 FISIOLOGIA DEI SISTEMI	1	
18609 ZOOLOGIA MARINA	15	26,9
19111 FITTOBIOLOGIA MARINA	14	27,4
27532 FISICA (C.I.)	53	24,3
27609 BIOLOGIA VEGETALE (C.I.)	77	25,9
28593 BIODIVERSITA' ED EVOLUZIONE (C.I.)	24	24,1
28596 CHIMICA GENERALE (C.I.)	27	23,6
28598 CHIMICA ORGANICA (C.I.)	50	23,1
28604 FONDAMENTI DI MATEMATICA (C.I.)	57	22,1
28612 BIOLOGIA ANIMALE (C.I.)	45	22,7
28655 GESTIONE E SICUREZZA DEL LABORATORIO	1	
28691 BIOLOGIA E IMMUNOLOGIA MOLECOLARI (C.I.)	35	26,4
28693 ECOLOGIA E IGIENE APPLICATE (C.I.)	28	28,1
28702 ANATOMIA E FISIOLOGIA DEI SISTEMI (C.I.)	44	25,2
28708 BIOCHIMICA E FISIOLOGIA MARINE (C.I.)	15	26,5

	N. of exams passed	Average grade *
28710 BIOLOGIA MARINA E OCEANOLOGIA (C.I.)	13	26
28723 COMPLEMENTI DI FISICA BIOLOGICA	8	29
28768 PRINCIPI DI CONSERVAZIONE BIOLOGICA	13	28
28771 PRODUTTIVITA' E SVILUPPO SOSTENIBILE	8	28,8
37205 METODI MOLECOLARI IN SISTEMATICA BIOLOGICA	6	27,5
37206 MICOLOGIA SCIENTIFICA	7	27,7
37637 ZOOLOGIA EVOLUZIONISTICA	19	27,4
37909 I GRANDI VERTEBRATI MARINI (C.I.)	15	28,3
54576 CITOLOGIA E ISTOLOGIA	126	24,3
66907 CHIMICA GENERALE	114	25,5
66955 ZOOLOGIA	33	25,5
66976 BIOLOGIA DEI VERTEBRATI	5	
66979 FONDAMENTI DI MATEMATICA, PROBABILITA' E STATISTICA	65	25,5
66989 BIOLOGIA E DIVERSITA' VEGETALE	49	26
66992 CHIMICA ORGANICA	81	25,6
66993 FISICA	87	26,4
68586 FILOSOFIA DELLA SCIENZA	12	26,9

* Note: no average grade is given if the number of exams passed is less than or equal to 5.

D.3. OPINIONS OF GRADUATES AND ATTENDING STUDENTS

Opinions of graduates on the Study Programme.

Tables and graphs provide information on the number of graduates who expressed positive opinions on the Study Programme, focusing on opinions expressed by attending students on course units.

D.3.1. OPINION OF GRADUATES

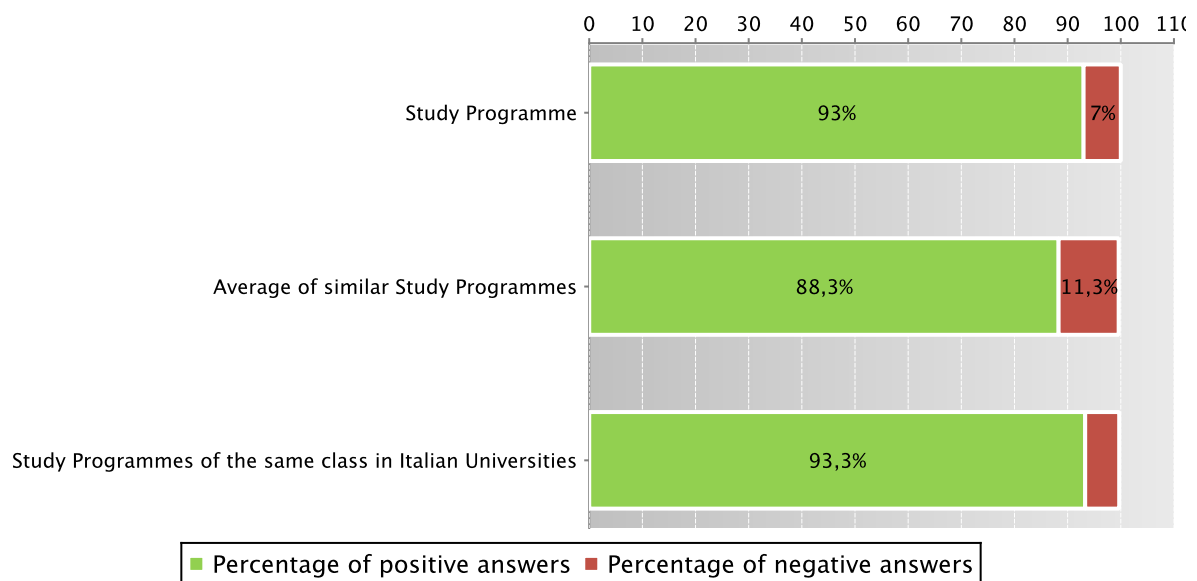
The **graph** shows the percentage of graduates (*AlmaLaurea* survey) who responded positively to the question: “**Are you generally satisfied with the Study Programme**”.

In addition, the **table** shows the percentage of students who answered “Yes, to the same programme at the university” to the question “Would you register again to the university?”.

The Study Programme data is compared with the average of **similar Study Programmes (which belong to the same group)**, and the average of Study Programmes of the same **class** of other Italian universities for the graduates of the indicated years.

Graduates in 2012 who responded positively to the question: “Are you generally satisfied with this Study Programme?”

Data of the Study Programme D.M. 270/04 Scienze biologiche (code 8012)



Data of the Study Programme D.M. 270/04 Scienze biologiche (code 8012)

		N. graduates	Completed Questionnaires	% of positive answers to the question: “Are you generally satisfied with this Study Programme?”	% of answers “yes to the same Programme in the same University” to the question “Would you register again to the University”
2011	Study Programme	37	35	94,3%	91,4%
	Average of similar Study Programmes	23,7	22,8	88,9%	73,5%
	Study Programmes of the same class in Italian Universities	475	457	93,4%	76,4%
2012	Study Programme	72	71	93,0%	81,7%
	Average of similar Study Programmes	24,4	23,9	88,3%	72,3%
	Study Programmes of the same class in Italian Universities	1210	1172	93,3%	76,2%

Symbols:

(*) The opinions of the Study Programmes with less than 5 graduates are not shown.

Further information on [Graduates' Profile Report](#).

See data of previous academic years – Study Programme D.M. 509/99 Biological sciences (code 0091) [paragraph D.5.3.1](#).

D.3.2 ADDITIONAL DATA ON OPINIONS OF STUDENTS

D.3.2.1. OPINION OF ATTENDING STUDENTS

The **graph** shows the percentage of attending students who responded positively to the question in the questionnaire: “Are you generally satisfied with this course unit?” in academic year 2011/2012.

The **table** also shows the number of completed questionnaires.

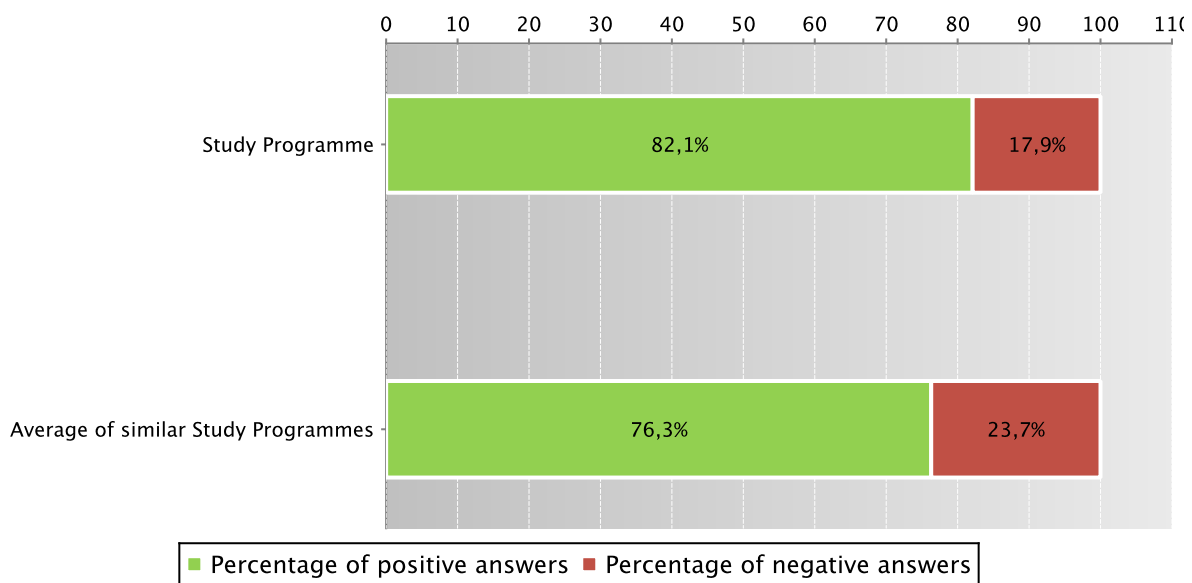
The Study Programme data is compared with the [average of similar Study Programmes \(which belong to the same group\)](#), for the indicated academic years.

The data concerning the students' opinion refers to the opinions of those attending lessons, whether they are enrolled in the current programme or a Study Programme running under pre-reform regulations (under D.M. 509).

For the University of Bologna the survey and subsequently analysis of the opinions of students attending the course is cared by Academic Affairs Division - Quality Assurance Department and Control and Finance Division - Support Planning and Evaluation Department. The overall results and the methods of collection and analysis are described in the document published online on the [Statistical Observatory of the University of Bologna](#) (see the note in the glossary).

Students who responded positively to the question: “Are you generally satisfied with this course unit?” in academic year 2011/2012

Data of the Study Programme D.M. 270/04 Scienze biologiche (code 8012) and of the Study Programme D.M. 509/99 Scienze biologiche (code 0091)



		Number of completed questionnaires	% of positive answers concerning the general satisfaction with the course unit – Question 19
a.y. 2009/2010	Study Programme	2859	82,4%
	Average of similar Study Programmes	1006,2	75,2%
a.y. 2010/2011	Study Programme	2609	81,0%
	Average of similar Study Programmes	1038	75,4%
a.y. 2011/2012	Study Programme	2201	82,1%
	Average of similar Study Programmes	1243	76,3%

Symbols:

(*) When there is a small number of questionnaires, the percentage of positive opinions on overall satisfaction is not presented. Further information on [Rapporto Opinione degli studenti frequentanti sulle attività didattiche](#) (the content is in Italian).

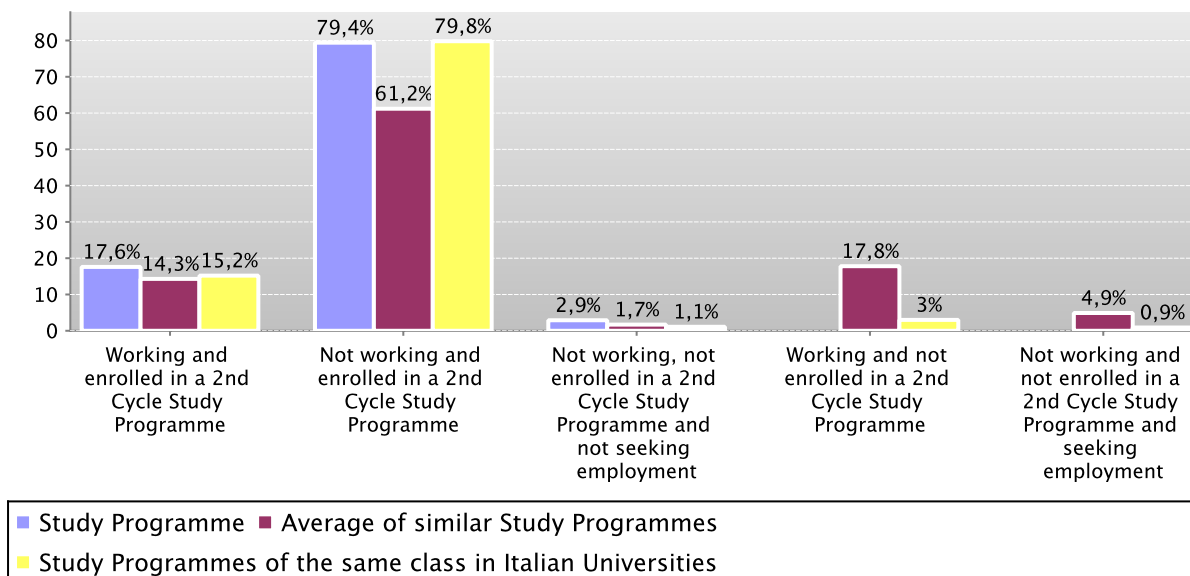
D.4. ENTRY INTO THE WORLD OF WORK

Employment situation of graduates of the Study Programme.

Tables and graphs provide information on the employment situation of graduates one year after graduating.

D.4.1. EMPLOYMENT SITUATION

Employment situation of graduates in 2011 one year after graduating



		N. graduates interviewed	Employment and education situation (1)					Not working, not seeking employment, but following a university programme/traineeship (2)	Degree's appropriateness for the job (referred to the graduates who just work) (3)	
			Working and not enrolled in a 2nd Cycle Study Programme	Working and enrolled in a 2nd Cycle Study Programme	Not working and enrolled in a 2nd Cycle Study Programme	Not working, not enrolled in a 2nd Cycle Study Programme and not seeking employment	Not working and not enrolled in a 2nd Cycle Study Programme and seeking employment		Effective / very effective	Quite effective
Graduation Year 2011	Study Programme	34		17,6%	79,4%	2,9%		70,6%	16,7%	33,3%
	Average of similar Study Programmes	21,7	17,8%	14,3%	61,2%	1,7%	4,9%	55,2%	33,5%	26,0%
	Study Programmes of the same class in Italian Universities	435	3,0%	15,2%	79,8%	1,1%	0,9%	69,7%	14,1%	17,9%

See data of previous academic years – Study Programme D.M. 509/99 Biological sciences (code 0091) [paragraph D.5.4.1.](#)

D.5. INFORMATION ON PRE-REFORM PROGRAMMES (DM 509/99)

D.5.1. STUDENTS STARTING THEIR UNIVERSITY CAREERS

Characteristics of incoming students at the beginning of their university careers. Tables and graphs provide information on the number of registered students, focusing on the characteristics of the students, results of any entrance tests and students assigned additional learning requirements.

D.5.1.1. ENROLMENTS AND REGISTRATIONS

Data of enrolments and registrations of the last three academic years are shown in [paragraph D.1.1.](#)

D.5.1.2. ADDITIONAL DATA ON STUDENTS' STARTING THEIR UNIVERSITY CAREERS

D.5.1.2.1. CANDIDATES REGISTERED FOR THE ENTRANCE EXAM

Data of candidates registered for the entrance exam are shown in [paragraph D.1.2.1.](#)

D.5.1.2.2. INCOMING STUDENTS

Data of incoming students of the last three academic years are shown in [paragraph D.1.2.2.](#)

D.5.2. REGULARITY OF STUDIES

Insight into the regularity with which the students pass their exams.

Graphs and tables provide information on the number of students who leave the programme after the first year and the number of regular graduates, focusing on the number of credits obtained at the end of the first year, the number of exams passed and the average grade achieved for each course unit.

D.5.2.1. STUDENTS LEAVING THE PROGRAMME BETWEEN YEARS 1 AND 2

Data of students leaving the Study Programme of the last three academic years are shown in [paragraph D.2.1.](#)

D.5.2.2. REGULAR GRADUATES

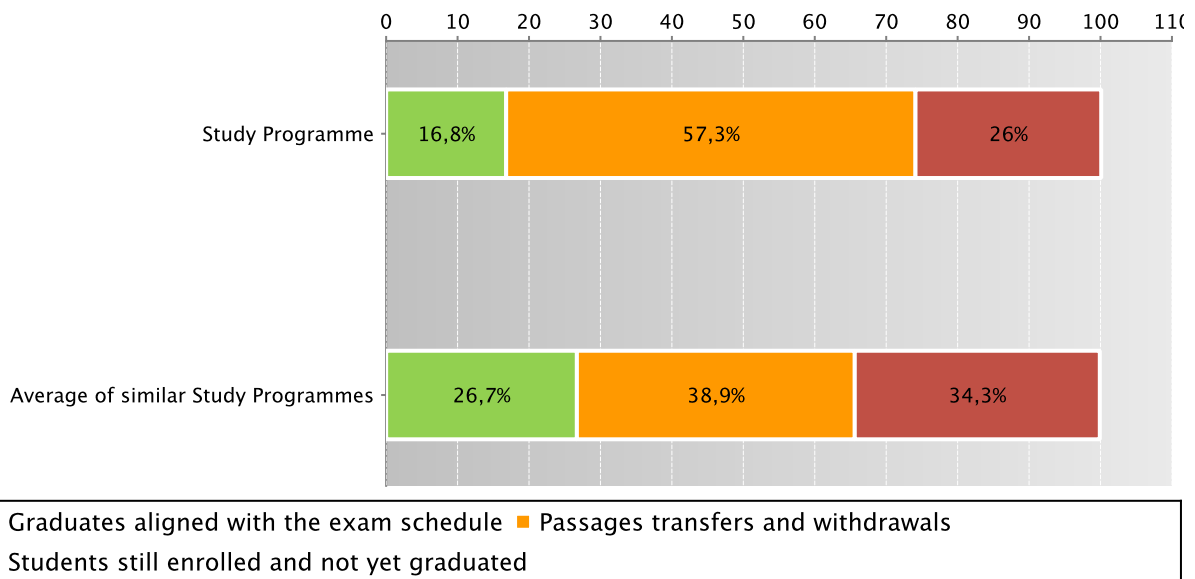
Here you will find information on regular graduates, on how many students, at the end of the regular programme duration, left the programme and how many are still enrolled but not aligned to the exam schedule.

The **graph** and the **table** show the situation concerning **registered students** for the indicated academic year, at the end of the regular duration of the Study Programme, highlighting the percentage of regular graduates, the number of students still enrolled (**not aligned to the exam schedule** and **repeating** students), students who have left the programme (including **passages**, **transfers** and **withdrawals**).

The Study Programme data is compared with the average of **similar Study Programmes** (which belong to the same group) for students registered in the indicated academic years.

Situation of students 2007/2008 at the end of regular duration of the study programme

Data of the Study Programme D.M. 509/99 Biological sciences (code 0091)



Data of the Study Programme D.M. 509/99 Biological sciences (code 0091)

	Registered students	Regular graduates		Passages transfers and withdrawals		Students still enrolled and not yet graduated		
		N.	%	N.	%	N.	%	
Students 2007/2008	Study Programme	262	44	16,8%	150	57,3%	68	26,0%
	Average of similar Study Programmes	72,8	19,5	26,7%	28,4	38,9%	25	34,3%

Go back to [D.2.2. Regular graduates](#)

D.5.2.3. ADDITIONAL DATA ON REGULARITY OF STUDIES

D.5.2.3.1. CREDITS OBTAINED BY STUDENTS IN THE 1ST YEAR

Data of credits obtained by students in the 1st year of the last three academic years are shown in paragraph [D.2.3.1.](#)

D.5.2.3.2. EXAMS PASSED AND AVERAGE GRADE

Data of exams passed and average grade are shown in paragraph [D.2.3.2.](#)

D.5.3. OPINIONS OF ATTENDING STUDENTS AND GRADUATES

Opinions of graduates on the Study Programme.

Tables and graphs provide information on the number of graduates who expressed positive opinions on the Study Programme, focusing on opinions expressed by attending students on course units.

D.5.3.1. OPINION OF GRADUATES

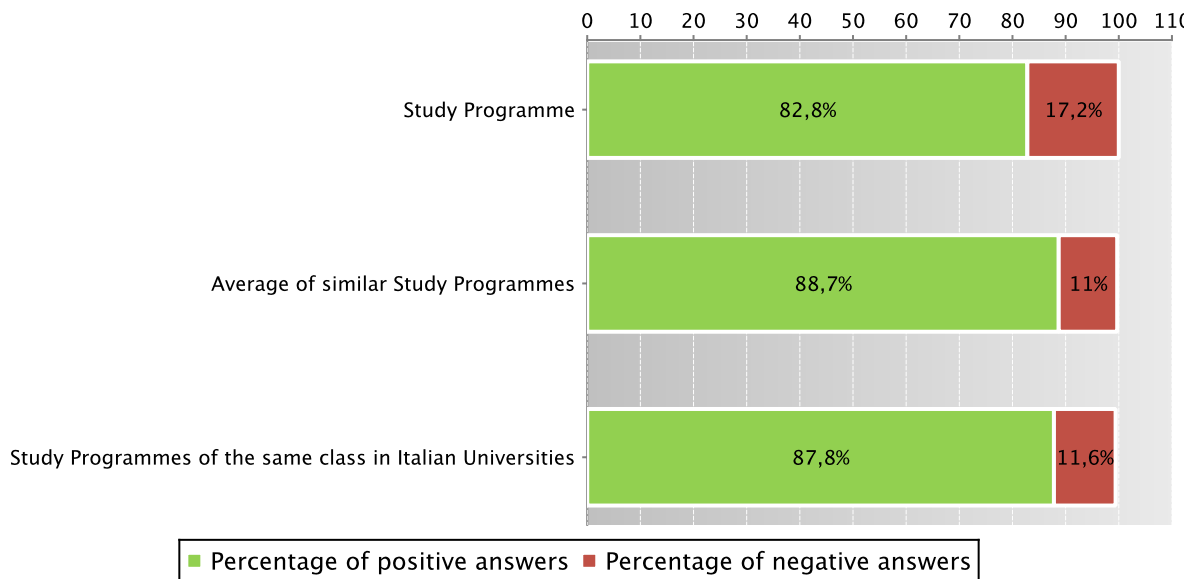
The **graph** shows the percentage of graduates (AlmaLaurea survey) who responded positively to the question: “**Are you generally satisfied with the Study Programme**”.

In addition, the **table** shows the percentage of students who answered “Yes, to the same programme at the university” to the question “Would you register again to the university?”.

The Study Programme data is compared with the average of similar Study Programmes (which belong to the same group), for the indicated years.

Graduates in 2010 who responded positively to the question: “Are you generally satisfied with this Study Programme?”

Data of the Study Programme D.M. 509/99 Scienze biologiche (code 0091)



Data of the Study Programme D.M. 509/99 Scienze biologiche (code 0091)

	N. graduates	Completed Questionnaires	% of positive answers to the question: “Are you generally satisfied with this Study Programme?”	% of answers “yes to the same Programme in the same University” to the question “Would you register again to the University”	
2010	Study Programme	144	134	82,8%	64,9%
	Average of similar Study Programmes	44,6	43,4	88,7%	72,5%
	Study Programmes of the same class in Italian Universities	2274	2091	87,8%	67,1%

Symbols:

(*) The opinions of the Study Programmes with less than 5 graduates are not shown.

Further information on [Graduates’ Profile Report](#).

Go back to [D.3.1. Opinion of graduates](#)

D.5.3.2 ADDITIONAL DATA ON OPINIONS OF STUDENTS

D.5.3.2.1. OPINION OF ATTENDING STUDENTS

Data of opinion of attending students of the last three academic years are shown in paragraph D.3.2.1.

D.5.4. ENTRY INTO THE WORLD OF WORK

Employment situation of graduates of the Study Programme.

Tables and graphs provide information on the employment situation of graduates one year after graduating.

D.5.4.1. EMPLOYMENT SITUATION

The paragraph shows the employment situation of graduates one year after graduating.

The data is taken from the [AlmaLaurea](#) reports on the employment situation of graduates.

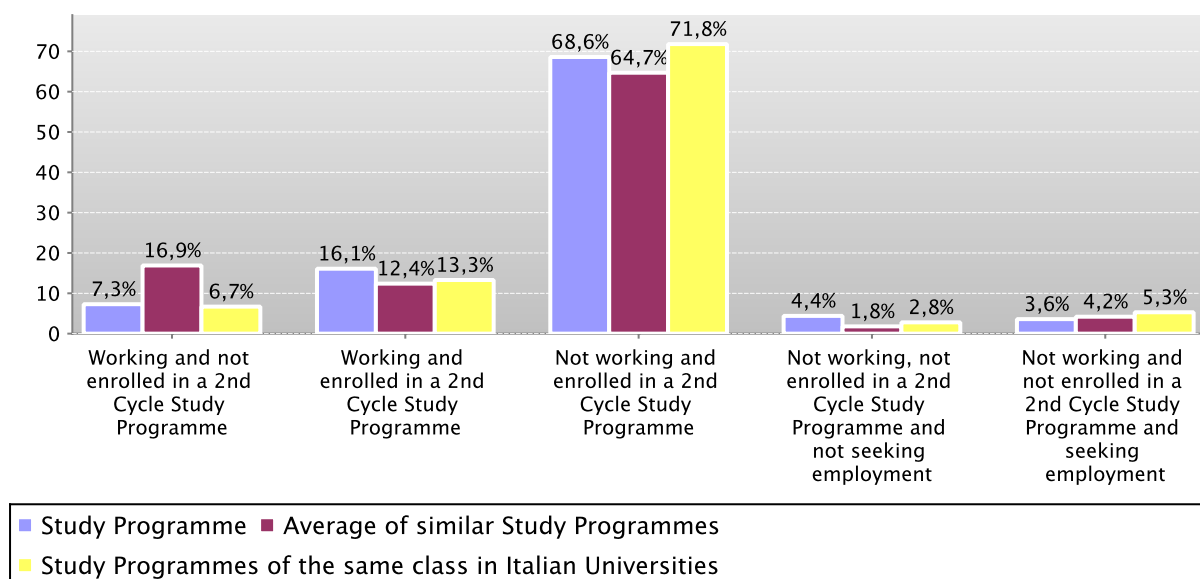
The **graph** shows who is working, who is not working but has enrolled in a Second Cycle study programme, who is not working and is not seeking employment, who is not working but is seeking employment.

In addition, the **table** shows the number of graduates interviewed, the number involved in internships and traineeships and the appropriateness of their degree to the job.

The Study Programme data is compared with the average of similar Study Programmes (which belong to the same group) and the average of Study Programmes of the same faculty of other Italian universities for the graduates of the indicated years.

Employment situation of graduates in 2010 one year after graduating

Data of the Study Programme D.M. 509/99 Biological sciences (code 0091)



Data of the Study Programme D.M. 509/99 Biological sciences (code 0091)

		N. graduates interviewed	Employment and education situation (1)					Not working, not seeking employment, but following a university programme/traineeship (2)	Degree's appropriateness for the job (referred to the graduates who just work) (3)	
			Working and not enrolled in a 2nd Cycle Study Programme	Working and enrolled in a 2nd Cycle Study Programme	Not working and enrolled in a 2nd Cycle Study Programme	Not working, not enrolled in a 2nd Cycle Study Programme and not seeking employment	Not working and not enrolled in a 2nd Cycle Study Programme and seeking employment		Effective / very effective	Quite effective
Graduation Year 2009	Study Programme	133	12,8%	12,8%	64,7%	1,5%	8,3%	58,6%	20,6%	29,4%
	Average of similar Study Programmes	43,1	19,0%	11,8%	62,8%	1,9%	4,5%	58,0%	34,5%	32,8%
	Study Programmes of the same class in Italian Universities	2201	7,3%	14,3%	71,6%	3,0%	3,9%	54,5%	17,2%	19,8%
Graduation Year 2010	Study Programme	137	7,3%	16,1%	68,6%	4,4%	3,6%	59,1%	10,0%	23,3%
	Average of similar Study Programmes	40,6	16,9%	12,4%	64,7%	1,8%	4,2%	59,0%	30,8%	34,6%
	Study Programmes of the same class in Italian Universities	2134	6,7%	13,3%	71,8%	2,8%	5,3%	55,6%	16,9%	20,4%

Symbols:

(*) The opinions of the Study Programmes with less than 5 graduates are not shown.

Notes on the AlmaLaurea report on the employment situation of graduates

(1) "Employment and education situation": the number of employed graduates is the sum of those working and those working who are also enrolled in a 2nd cycle degree programme. The number of those enrolled in a 2nd cycle degree programme is the sum of those who are working and studying and those who are only studying.

(2) "Number of those who do not work, who are not seeking employment but who are following a university programme/traineeship": the definition includes those who are enrolled in traineeships, PhD degrees, specialisation schools, Italian "master universitari" (first and second level). The presentation of this data complies with article 2 of D.M. 544 of 31st October 2007, as later provided for in Management Decree no. 61 of 10th June 2008 (transparency requirements).

(3) The evaluation of the appropriateness of the degree is obtained by a combination of the requirement of the relative qualification for the job held and the level of usage of the skills learned at university.

Further information on [Graduates' Employment report](#).

[Go back to D.4.1. Employment situation](#)

E. FIND OUT MORE: THE QUALITY OF YOUR STUDY PROGRAMME

The University of Bologna has identified its objectives as the *personal, cultural and professional growth of students and the improvement of the quality of learning, also in relation to the needs of society* (Strategic Plan 2010-2013).

Students, employers and society as a whole, have the right to effective learning for individual and intellectual growth, to develop critical sense and to prepare for the world of work.

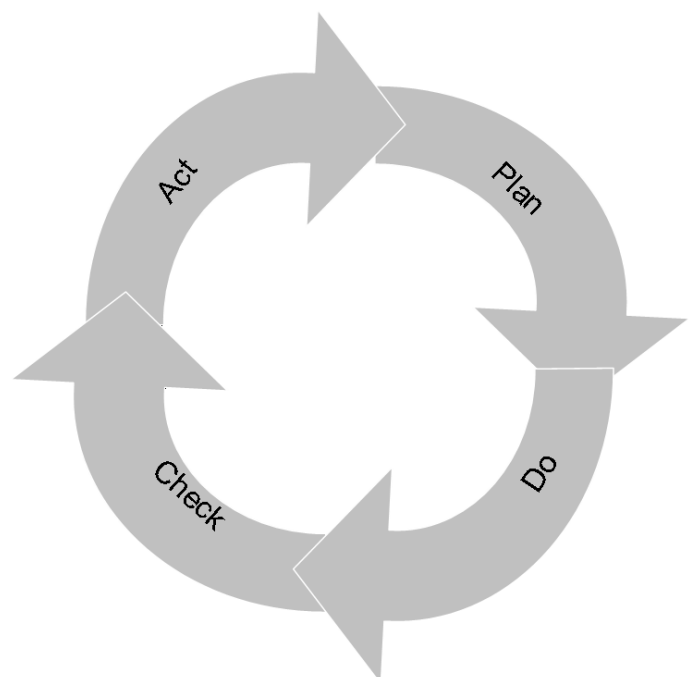
In the Statute and the Strategic Plan 2010-2013 the University of Bologna acknowledges its responsibility in guaranteeing the quality of its study programmes, and for this purpose adopts an "internal quality assurance system".

The Internal Quality Assurance system

The internal quality assurance system is a set of processes and responsibilities adopted to guarantee the quality of Study Programmes at the University of Bologna.

The guarantee of the quality of a Study Programme is the correspondence of the results achieved with the set objectives, in the following phases:

- Plan: defining the objectives
- Do: implementing the planned actions
- Check: checking that the objectives have been achieved
- Act: planning improvement action



This path responds to the expectations of students, guides teaching behaviour and provides indicators for the assessment of results. Self-assessment is based on the analysis of significant data (for example, the number of students graduating in line with the exam schedule, students' opinions and the employment rates of graduates) and highlights strengths and weaknesses in order to reflect on the achieved results, critically consider one's own working methods and take steps for the continual improvement of the Programme. This path involves all educational stakeholders, including students, in order to make use of the contributions of everyone with first-hand knowledge of the Study Programme. Improvement is therefore a day to day development, concerning all aspects of teaching: from the lesson timetable to the publication of on-line programmes, from classroom management to exam methods, and the actual design of the Programme.

This is what happens in each phase:

- **Planning:** the Study Programme is the result of a proposal from the teaching structures and approved by the Academic Bodies.
- **Management:** Schools, Departments and Study Programmes manage the activities required to ensure teaching. The activities are organised as follows:

What we do	Who does what				
	Professors	Study Programme	Schools	Departments	General Administration
Teaching calendar, lessons programme and exam schedules			x		
Management of financial resources			x	x	
Classroom teaching	x				
Management of classrooms and laboratories			x	x	
Libraries and study rooms			x	x	
Approval of individual study plans		x			
Communication and information		x	x		Academic Affairs Division
Guidance service		x	x		Academic Affairs Division
Internships		x	x		Academic Affairs Division
Administrative services: Student Administration Office					Academic Affairs Division
Administration services: Degree programme office			x		Academic Affairs Division
Study grants and loans ad honorem					Academic Affairs Division
Student mobility: university subsidies and programmes					International Relations Division
Mobility: study grants for dissertations abroad			x		
Mobility: authorisations and recognitions		x			
Other students support services		x	x		x

- Internal assessment:** every Study Programme periodically assesses its own results, evaluating, for example, the number of enrolled students, the number of withdrawing students, student opinions etc.; in this way, the strengths and weaknesses, as well as any implemented improvement actions, are highlighted. This phase is organised as follows:

What we do

Definition, gathering and publication of evaluation data

According to the general guidelines of the University and national and international standards, are defined the tools through which should be evaluated the results (indicators). The survey data to be evaluate are published every year on the Report of the Study Program.

Who does what

Academic Bodies

Self-Assessment

The Schools and Study Programmes assess the effectiveness of the previously adopted solutions, analyse the progress of their learning activities and draw up proposals for improvement.

Schools and Study Programmes

Internal audit

The results of the self-assessment process are reviewed in the following phases:

- **Analysis:** the University Quality Manager analyses the review documents, considering the ability to identify problems, propose solutions and the overall development of the internal quality assurance system.
- **Review:** The observations on the results obtained and the good practices adopted are examined together with the persons in charge of the Schools and Study Programmes in meetings organised by scientific-disciplinary field. The persons in charge receive the observations and inputs on the areas for development and the actions to be adopted in future to improve results.
- **Sharing:** the conclusions of the review activities are submitted to the Academic Bodies and the University Evaluation Board.

Quality Manager

Vice Rector for Teaching and Education

Academic Bodies

-
- **Improvement:** on the basis of the results of the internal audit, the Schools and Study Programmes plan improvement activities, to ensure that the Study Programmes increasingly respond to the needs of society. The cycle then starts over again, with the definition of actions to be implemented, the results of which are in turn verified, in a continuous path that guarantees the quality of education.

F. GLOSSARY TERMS

Additional Learning Requirements

Students enrolling in the first year of a first cycle or single cycle degree and who, following the results of the entrance exams established for each study programme, do not possess the knowledge required for access to the programme, are assigned additional learning requirements (OFA).

The OFA are fulfilled by passing an assessment test defined by the programme.

The non-fulfilment of the requirements by the date set by the Academic Bodies and published on the University Portal will lead to the re-enrolment in the first year of the programme.

AlmaLaurea

AlmaLaurea is an innovative in-line database service of graduates' curriculum vitae (1,620,000 CVs, from 53 Italian universities as of 05/07/2012), which offers a link between graduates, universities and businesses.

Created in 1994 on the initiative of the Statistical Observatory of the University of Bologna, managed by a consortium of Italian universities with the support of the Ministry of Education, University and Research, the purpose AlmaLaurea is to act as a point of contact between businesses and graduates, a reference within universities for anyone (students, businesses, etc...) working in the field of university studies, employment and the condition of young people at different levels.

Average of similar study programmes (belonging to the same group)

Average of the Study Programmes (which belong to the subject group)

Calculated average which refers to all study programmes of the same cycle which belong to the subject group.

There are four groups, composed as follows:

- **BIOMEDICAL** group: Study Programmes of the Schools of Pharmacy, Biotechnology and Sport Science; Medicine; Agriculture and Veterinary Medicine
- **SCIENTIFIC-TECHNOLOGICAL** group: Study Programmes of the Schools of Engineering and Architecture; Sciences
- **SOCIAL SCIENCES** group: Study Programmes of the Schools of Economics, Management, and Statistics; Law, Political Sciences
- **HUMANITIES** group: Study Programmes of the Schools of Arts, Humanities, and Cultural Heritage; Foreign Languages and Literatures, Interpreting and Translation; Psychology and Education

CFU University Learning Credits

University Learning Credits (CFU) were introduced under Italian Ministerial Decree no. 509/99 to comply with European legislation, and are a measurement of the volume of learning, including individual study, required of students; generally 1 CFU corresponds to 25 hours of a student's "overall learning effort".

Class

Degree classes group together study programmes of the same level and with the same key learning outcomes and available learning activities for a given number of credits and in sectors which are identified as indispensable. The features of the classes are set nationally, by Ministerial Decree, and are therefore common to all universities.

Cohort

Cohort refers to a group of students enrolled in the same academic year.

Enrolment status

In terms of enrolment, students may be:

- **Regularly enrolled:** students enrolled for as many or fewer years than the legal duration of the study programme, who do not fall into any of the following categories;
- **Not aligned with the exam schedule:** students who, without having graduated, have enrolled in all the years of the study programme and which, for programmes with compulsory attendance, have obtained all attendance certificates;
- **Repeating:** students re-enrolling in the same year of a programme again. Starting from academic year 2009-2010, students who have not fulfilled the assigned additional learning requirements within the deadline have to enrol in the 1st year as repeating students.

Entrance exam

Enrolment in a study programme may be free access or restricted access.

For all programmes with restricted access, candidates are required to sit an entrance exam and there are a limited number of places available. The entrance exam is a test which is used to draw up a graded list of candidates; students may enrol in the programme according to their place in the list. The methods of managing the call for applications and the list of candidates, including the methods for filling any unclaimed places, may vary from year to year. The test may be specific to a Degree Programme or may be part of a single exam covering several programmes from the same university or from other universities (during the registration the students should indicate their first choice).

The following definitions apply:

Available places = the number of places laid down in the call for applications to the Study Programme, or determined by subsequent legal provisions; these exclude any additional places reserved according to special provisions of the programme (e.g. for international study programmes, they do not include places for foreign students selected from other universities; for all programmes with restricted access regulated nationally, these do not include the places reserved for transferring students).

Number of candidates for the exam = number of students registered for the exam indicating the study programme as their first choice;

Number of participants in the exam = number of students participating in the exam indicating the study programme as their first choice;

Number of participants in the exam for every available place = number of students participating in the exam who indicated the study programme as their first choice as a ratio of the number of places available on the programme.

First year enrolments

This includes all students enrolled in the first year, including those joining the study programme in its first year through transferrals, as well as those enrolled in the first year but not for the first time (e.g. repeating students).

New Careers

Students who start a new university career (excluding transfers) from year one in a second cycle programme.

Passages and transfers

Passage: when a student applies to move to a different study programme from the one enrolled in the previous year, within the same university.

Transfer: when a student transfers from a study programme in one university to any programme in another university.

Registered students

Students who begin a career in the Italian University System for the first time and who enrol in the first year (i.e. for whom no previous university careers are recorded) of a First Cycle (L509, L) or Single Cycle programme (LSCU, LMCU)

Statistical Observatory of the University of Bologna

The Statistical Observatory was founded in 1997 in order to “provide the university governing bodies with a reliable and timely documentary and monitoring database aiming to promote decision-making processes and planning, particularly of learning activities and other services targeting the student population” (art.1 of the Founding and Operational Regulation). Following the disabling of the Statistical Observatory, as resolved by the Board of Governors on 14 December 2010, from the second semester of academic year 2010-11 the survey and subsequently analysis of the attending students opinion is cared for the University of Bologna by Academic Affairs Division - Quality Assurance Department and Control and Finance Division - Support Planning and Evaluation Department. The overall results and the methods of collection and analysis are described in the document published online on the [Statistical Observatory of the University of Bologna](#).

University DataWarehouse

Information service for the managers of the University of Bologna organisational departments which gathers, integrates and reorganises data from various sources and makes it available for analysis and evaluation for the purposes of planning and decision-making.

Withdrawal

Suspension of studies by students who do not register in the next academic year, or who drop out from the degree programme.