

2013



ALMA MATER STUDIORUM
UNIVERSITÀ DI BOLOGNA



School of Foreign Languages and Literatures, Interpreting and Translation

LAUREA (FIRST CYCLE DEGREE/
BACHELOR - 180 ECTS) IN ASIAN
LANGUAGES, MARKETS AND
CULTURES A.Y. 2013/2014

Programme Director Prof. Elisabetta Magni

REPORT

Study Programme Report
ASIAN LANGUAGES, MARKETS AND CULTURES
Programme ex D.M. 270/04 - Code 0980 - Class L-11
School of Foreign Languages and Literatures, Interpreting and Translation
Programme Director Prof. Elisabetta Magni

Created in collaboration with Teaching and Learning Administrative Area (AFORM – Area della Formazione) – Quality Assurance Unit

Edited by AAGG – University Web Portal Division and CeSLA – Web Technology Division, with MultiPublishing technology

Release date: July 2013

Academic year of reference: 2013/2014

www.unibo.it/QualityAssuranceEn

INDICE

What is the Study Programme Report?	1
A. Presentation and prospects	2
A.1. Presentation	2
A.2. Admission requirements	2
A.3. Learning outcomes	3
A.4. Career opportunities	4
A.5. Opinion of social partners and potential employers	4
A.6. Further studies	4
B. Teaching and Learning	5
B.1. Course Structure Diagram	5
B.2. Calendar and lecture timetable	5
C. Resources and services	6
C.1. Teachers	6
C.2. Student services: offices	6
C.2.1. Future students	6
C.2.2. Enrolled students	6
C.2.3. International students	6
C.2.4. Graduates	6
D. The Study Programme in figures	7
D.1. Students starting their university careers	7
D.1.1. Enrolments and registrations	7
D.1.2. Additional data on students' starting their university careers	8
D.1.2.1. Candidates registered for the entrance exam	8
D.1.2.2. Incoming students	9
D.1.2.3. Additional Learning Requirements	10
D.2. Regularity of studies	11
D.2.1. Students leaving the Programme between years 1 and 2	11
D.2.2. Regular graduates	12
D.2.3. Additional data on regularity of studies	13
D.2.3.1. Credits obtained by students in the 1st year	13
D.2.3.2. Exams passed and average grade	14
D.3. Opinions of graduates and attending students	16
D.3.1. Opinion of graduates	16
D.3.2. Additional data on opinions of students	17
D.3.2.1. Opinion of attending students	17
D.4. Entry into the world of work	18
D.4.1. Employment situation	18
D.5. Information on pre-reform programmes (DM 509/99)	19
D.5.1. Students starting their university careers	19
D.5.1.1. Enrolments and registrations	19
D.5.1.2. Additional data on students' starting their university careers	19
D.5.1.2.1. Candidates registered for the entrance exam	19
D.5.1.2.2. Incoming students	19
D.5.2. Regularity of studies	19
D.5.2.1. Students leaving the Programme between years 1 and 2	19
D.5.2.2. Regular graduates	20
D.5.2.3. Additional data on regularity of studies	20
D.5.2.3.1. Credits obtained by students in the 1st year	20
D.5.2.3.2. Exams passed and average grade	20

D.5.3. Opinions of attending students and graduates	21
D.5.3.1. Opinion of graduates	21
D.5.3.2 Additional data on opinions of students	21
D.5.3.2.1. Opinion of attending students	22
D.5.4. Entry into the world of work	22
D.5.4.1. Employment situation	22
E. Find out more: the quality of your Study Programme	24
F. Glossary terms	27

WHAT IS THE STUDY PROGRAMME REPORT?

What is the Study Programme Report?

The Study Programme Report provides updated information which is important for the purposes of Quality Assurance and is published annually by the University of Bologna.

The main aspects of the teaching programme are described in detail, with a view to assuring the principle of transparency and promoting self-assessment and continuous improvement processes.

The document provides a concrete overview of the features and results of the Study Programme for students, families, employers and so on.

For example, regarding the current issue of employment, it describes the learning outcomes and career opportunities; it also includes statistics on the percentage of employed graduates (D.4. Employment situation).

The document is organised into five sections and a glossary:

A. Presentation and prospects

Key information on the Study Programme, including the expected learning outcomes, career opportunities and further studies.

B. Teaching and Learning

The updated course structure diagram with the full titles and listings of the course units and the latest published lecture timetable.

C. Resources and services

The list of teaching staff and their relative curricula, the offices (secretariats), services (work placements) and infrastructures (libraries, laboratories) available to students.

D. The Study Programme in Figures

Key data shows how many students are enrolled, how many have been assigned additional learning requirements, how many drop out after the first year, how many graduate in line with the programme schedule, the opinions of attending and graduating students on the teaching programmes and information concerning graduate employment.

E. Find out more: the quality of your Study Programme

How the quality system applied to your Study Programme works. The quality system of your Study Programme is a set of processes and responsibilities adopted to guarantee the quality of all Study Programmes at the University of Bologna.

NOTES:

- Reports are available for all Study Programmes for which it is possible to enrol in the first year in academic year 2012/2013: the information and data provided is as updated as possible.
- Sections A, B and C provide data for the academic year 2012/2013.
- Section D presents data regarding the Study Programmes in the last three academic years.
- The information and data were taken from the University databases and the reports published by the [Statistical Observatory of the University of Bologna](#) and [AlmaLaurea](#), and are updated to **15 June 2012**.

A. PRESENTATION AND PROSPECTS

This section presents the key information concerning the Study Programme, including the expected learning outcomes, career opportunities and further studies, updated to the academic year 2013/2014.

A.1. PRESENTATION

This paragraph provides information on the specific learning outcomes of the Study Programme and the curriculum.

The aim of the Asian languages, markets and cultures Degree Programme is to provide students with a good language proficiency and good knowledge of both historical and cultural background of Asian countries.

Students will achieve good proficiency in the English language or another European language, which is also necessary for communication in Asian countries, since these skills are required in service and communication sectors, in international and multicultural contexts.

Arabic and Persian are the languages of reference for Middle-Eastern countries, while Chinese and Japanese are the main languages for Far-Eastern countries.

The programme also focuses on basic knowledge of sociological, economic and multicultural aspects.

The skills and knowledge provided can lead to occupy positions in the following professional areas: linguistic consultant for companies, institutions and cultural bodies in Asian countries, professional roles in economic and cultural bodies, as well as institutions operating internationally.

Additional skills in these sectors may be required for roles which entail a greater degree of autonomy and responsibility: these can be acquired through internships, post-graduate vocational courses or post-graduate 1st level Master's Degree, that graduates of Asian Languages, Markets and Cultures can undertake thanks to the methodological and learning abilities developed.

A.2. ADMISSION REQUIREMENTS

This paragraph provides information on the knowledge required for admission to the Study Programme.

For admission to the First Cycle Degree Programme, you must have **one** of the following qualifications:

- five-year high school diploma
- four-year high school diploma with supplementary year
- degree
- other foreign qualifications recognized as suitable for access to university studies and equivalent to one of the aforementioned titles.

This first cycle degree programme is subject to restricted access, meaning that any student has to take the entrance exam, whose structure and conditions will be released every year through a public announcement of selection.

For the academic year 2013/14, this Degree Course Council has set 100 enrolment positions for Italian citizens, EU citizens and Non-EU citizens with equivalent citizenship.

It is also necessary to possess basic knowledge and skills, as stated in the didactic regulations of the course. These will be assessed through an entrance examination, for which every year a minimum score is determined by the Degree Course Council and released in a public announcement of selection.

For the academic year 2013/14, students who will get a score lower than 23/45 in the section of the test concerning grammatical competence in the Italian language, will have to fulfil the Additional Learning Requirements ("OFA") set for the first year of enrolment: these students will have to attend a specific course on Italian language structures and take its final test.

Students who will pass this examination will be deemed to have fulfilled the Additional Learning Requirements ("OFA"). On the other hand, students who will not pass this written exam, will have the possibility to take it again, up until July of the first year of enrolment. However, if they will not have passed the examination within the summer session, they will be required to repeat the year.

Following the dispositions provided for by the Degree Course Council, students who

- have suspended/interrupted or have withdrawn from studies
- lost the student status
- transferred to a degree programme running under the reformed system
- possess an academic title
- have obtained credits from course units/activities attended abroad
- have changed the Degree programme within the University of Bologna
- have transferred from another University

will have to take the entrance test.

The only students exempted from taking the entrance test are those who enrolled from the year 2011/12 to the Degree Programme in Asian languages, markets and cultures and ask for a Course transfer to the Degree Programme in foreign languages and Literatures.

A.3. LEARNING OUTCOMES

This paragraph provides information on the knowledge and skills students will have acquired by the end of the Programme.

KNOWLEDGE AND UNDERSTANDING ABILITIES

Graduates will be expected

- to have a general knowledge of Italian literary and historical culture, useful for translating from Asian languages;
- to have general theoretical linguistic knowledge, essential in the use of foreign languages;
- to achieve proficiency (level C1) in a European language, necessary for any type of communication or public relations in Asian countries;
- to achieve proficiency in the chosen Asian language and have a wide knowledge of the relevant cultural backgrounds (level 1 Advanced);
- to possess basic socio-economic knowledge.

These abilities are achieved through attendance and active participation to lectures/seminars, as well as through individual study, which is required for both obligatory course units (Italian literature and Linguistics) and “core” course units (European languages, Asian linguistics and literature related to cultural contexts, basic socio-economic course units).

Asian languages are learned particularly during exercises carried out in specific language laboratory activities at different levels.

Written and/or oral exams will be used as outcome measures.

APPLYING KNOWLEDGE AND UNDERSTANDING:

Graduates:

- will have an understanding of the different social and cultural backgrounds and will be able to apply it in contexts of international cooperation;
- will be able to apply their linguistic and cultural knowledge, as well as basic economic knowledge, to business management;
- are able to use the most common office automation programmes (word, excel, access, e-mail).

The ability to apply linguistic and literary knowledge and understanding is achieved through the study Asian languages, their formal features and their usage; through the critical analysis of texts and documents examined during classroom activities, which are proposed for individual study and useful as an introduction to bibliographical research; through practical tasks and laboratory activities.

Socio-economic course units develop skills in the field of social sciences in order to complete linguistic knowledge, and are further developed in preparation of the final examination.

Computing skills are developed in specific learning activities.

The tests, written and oral exams, reports and the production of written assignments aim to assess the students' command of analytical tools and methods, as well as analytical skills and organisational autonomy.

MAKING JUDGEMENTS

Graduates

- will be able to collect and select data and information and use it to support analysis and express opinions on the matters concerned;
- will acquire good problem solving skills and will be able to work in a group, as well as to organise and plan activities autonomously.

The acquisition of the above listed abilities is guaranteed by course units in which high importance is given to changes in socio-linguistic /cultural contexts, as well as on the role of eastern languages in intercultural relations.

Students show their judgement skills during group work carried out to prepare the final paper, and during the organisation and development of the final paper.

COMMUNICATION SKILLS:

Graduates:

- will be able to communicate information and ideas within their areas of expertise, adopting different forms of communication according to the interlocutors;
- will have excellent written and oral communication skills in their mother tongue and a foreign language and will be able to communicate in both written and spoken forms on specific topics in the Asian language studied.

The above listed communication skills are not only acquired through specific Asian languages' courses, as also other course units provide students with these skills, through activities in direct contact with multilingual and multicultural contexts and through the preparation of the final paper.

The above- discussed abilities are assessed through examinations that include text analysis, essays and oral presentation of written papers.

LEARNING SKILLS:

Graduates:

- will be able to learn and apply the knowledge acquired;

- will be able to apply the learning methods acquired to update and further research the topics studied, also in professional terms, and to undertake further studies.

The learning abilities acquired are a result of the three- year course of studies, with particular stress on individual study, in the preparation of individual projects, their correction and rewriting, and in the acquisition of the essential instruments for bibliographic research and lexical study of languages.

Learning skills are assessed during the course units.

The assessment takes into account the students' ability to organise their study time and to meet deadlines.

All learning skills are also developed during the preparation of the final paper and are thus further assessed.

A.4. CAREER OPPORTUNITIES

This paragraph provides information on the occupational profile, functions and fields of employment available to graduates of this Programme.

Graduates will be able to perform the professional roles and functions in the following employment sectors:

MIDDLE AND FAR EAST LINGUISTIC CONSULTANT WITH ECONOMIC AND SOCIO-CULTURAL KNOWLEDGE

Main functions:

- Management of international communication and preparation of specialised in the foreign language/s;
- Organisation and management of meetings, international congresses, events, exhibitions and fairs;
- Support in international social relations;
- Management of international promotional and marketing activities;
- Commercial and administrative activities in Italian Import-export companies or in foreign companies operating in Italy.

Career opportunities:

Administrative-organisational and public relations roles in:

- Public and private companies
- Import-export offices
- Sales offices
- International relations offices
- Companies specialised in the organisation of national and international fairs and exhibitions
- Public relations and organisational offices
- Tourist companies
- Publishing companies
- Public and private bodies that provide services to foreigners
- Institutions operating in international cooperation
- Cultural bodies and institutions at international level
- Public and private companies and bodies at the international level.

The degree programme project has been submitted to selected external stakeholders in order to receive their opinions and feedbacks on the learning outcomes and the professional profiles.

A.5. OPINION OF SOCIAL PARTNERS AND POTENTIAL EMPLOYERS

This paragraph describes the outcome of the consultation with the representative employment and trade organisations.

This information is not available in English at this time.

A.6. FURTHER STUDIES

It gives access to second cycle studies (Laurea Magistrale) and first level professional Master.

B. TEACHING AND LEARNING

This section describes the updated course structure diagram (for academic year 2013/2014), with the full titles and listings of the course units and the latest published lecture timetable.

B.1. COURSE STRUCTURE DIAGRAM

The link takes you to the Study Programme course structure diagrams. You can also access to each course unit content.

- [Study plan: all course units in the programme](#)

B.2. CALENDAR AND LECTURE TIMETABLE

The links take you to the teaching calendar (exam session and final examination session) and the lecture timetable (in Italian).

- [Lecture timetable](#)
- [Exam sessions](#)
- [Final examination sessions](#)

C. RESOURCES AND SERVICES

This section provides a list of teaching staff and their relative curricula and a description of the services available to students for the academic year 2013/2014.

C.1. TEACHERS

The paragraph lists the lecturers who teach in the Study Programme: from here you can access the personal web pages of each one. Information updated to 28 May 2013 (in Italian).

Permanent teaching staff:

Avellini, Luisa	Ivancic, Barbara	Mulinacci, Roberto	Saccone, Carlo
Baffetti, Giovanni	Magnani, Elisa	Nannoni, Catia	Sberlati, Francesco
Benvenuti, Giuliana	Magni, Elisabetta	Pano Alaman, Ana	Scrolavezza, Paola
Betti, Silvia	Manfredi, Marina	Pistoso, Maurizio Silvio	Thune, Eva- Maria Christina
Ceccagno, Antonella	Marchetti, Nicolò	Prandoni, Marco	Charlotte
Celli, Nicoletta	Mezzetti, Luca	Quaquarelli, Leonardo	Timoteo, Marina
Fusari, Sabrina	Michelacci, Lara	Rieger, Maria Antoinette	Turci, Monica
Galvani, Adriana	Miller, Donna Rose	Rodrigo Mora, Maria José	Zotti, Valeria

Contract teaching staff:

Benenati, Giovanni Domenico	Medei, Renato
Bernardini, Giovanni	Modena, Silvia
Canella, Federico	Pedrini, Giulio
Cavalieri, Silvia	Pirazzoli, Melinda
Crisma, Amina	Pistocchi, Filippo
Fariselli, Patrizia	Solieri, Flavia
Landeros De Casolari, Leopoldina	Vitucci, Francesco
Mardani, Faezeh	Zhai, Ran

C.2. STUDENT SERVICES: OFFICES

C.2.1. FUTURE STUDENTS

The link take you to the webpage which provides specific information about the offices and the services for the future students (in Italian).

- [Future students](#)

C.2.2. ENROLLED STUDENTS

The link take you to the webpage with the information on the offices and the services for the enrolled students (in Italian).

- [Enrolled students](#)

C.2.3. INTERNATIONAL STUDENTS

The link take you to the webpage with the information on the offices and the services for the international students (in Italian).

- [International students](#)

C.2.4. GRADUATES

The link take you to the webpage with the information on the offices and the services for the graduates (in Italian).

- [Graduates](#)

D. THE STUDY PROGRAMME IN FIGURES

Information on students' starting their university careers, how many students are in line with the regular programme, opinions of students and graduates on the teaching programmes and information concerning graduate employment.

This section provides the data of the last academic years for the Study Programme (SP) and a comparison with similar Study Programmes. The University of Bologna has divided its Study Programmes into four groups:

- **BIOMEDICAL group:** Study Programmes of the Schools of Pharmacy, Biotechnology and Sport Science; Medicine; Agriculture and Veterinary Medicine
- **SCIENTIFIC-TECHNOLOGICAL group:** Study Programmes of the Schools of Engineering and Architecture; Sciences
- **SOCIAL SCIENCES group:** Study Programmes of the Schools of Economics, Management, and Statistics; Law, Political Sciences
- **HUMANITIES group:** Study Programmes of the Schools of Arts, Humanities, and Cultural Heritage; Foreign Languages and Literatures, Interpreting and Translation; Psychology and Education

The section presents the results of the Study Programme for the last three academic years.

Main data shows how many students enrolled, the number of students assigned OEA, how many drop out after the first year, how many graduate in line with the programme schedule, the opinions of attending and graduating students on the teaching programmes and information concerning graduate employment.

The information and data presented in this section, updated to 28 May 2013, were taken from University databases and [AlmaLaurea](#).

Study Programmes may be subject to degree programme system modifications from one academic year to the next, and the data provided in this section may refer to a programme with a slightly different system to the one currently running (such as programme title, course structure diagram and list of lecturers). However, indicatively the data presents the general trend of the Study Programme over the past three years.

Most of the Study Programmes running at the University of Bologna have been reformed in compliance with DM 270/04, most of them from the academic year 2008/2009. In the reports provided for these Programmes, paragraph D.5. refers to the Study Programmes as they were presented prior to the reform.

D.1. STUDENTS STARTING THEIR UNIVERSITY CAREERS

Characteristics of incoming students at the beginning of their university careers. Tables and graphs provide information on the number of **registered students**, focusing on the characteristics of the students, results of any entrance tests and the students assigned any **additional learning requirements**.

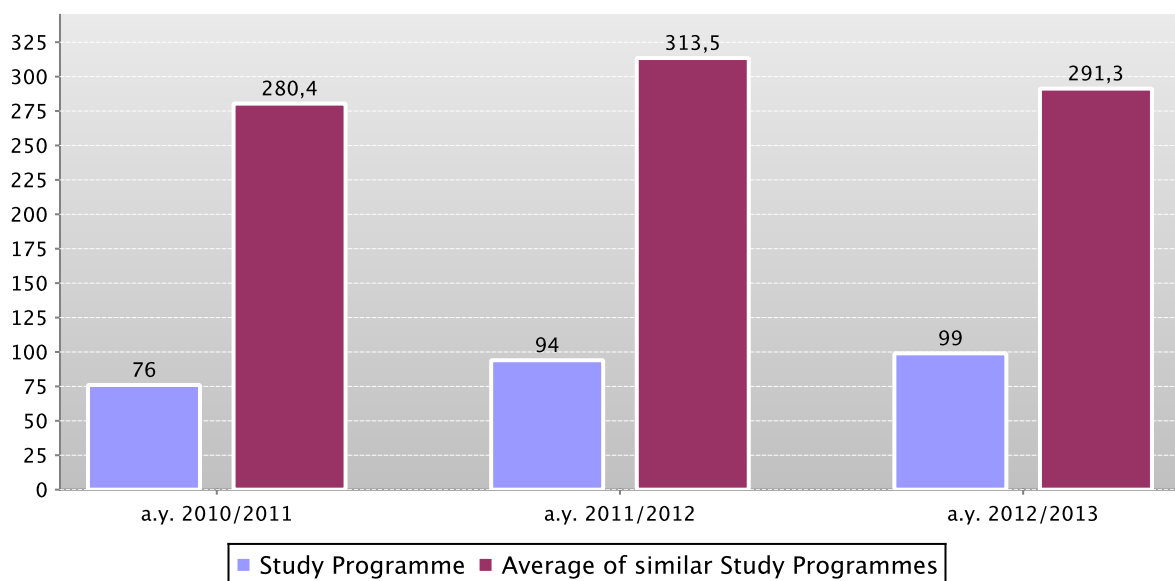
D.1.1. ENROLMENTS AND REGISTRATIONS

The **graph** shows the number of **students enrolled in the 1st year** compared with the **average of similar Study Programmes** (which belong to the same group).

In addition, the **table** shows the total number of **registered students** and the total number of enrolled students.

Data of the Study Programme is compared with the average of the Study Programmes of **average of similar Study Programmes** (which belong to the same group) for the indicated academic years.

First year enrolments



	a.y. 2010/2011			a.y. 2011/2012			a.y. 2012/2013		
	Registered students	N. first year enrolments	Total N. enrolled students	Registered students	N. first year enrolments	Total N. enrolled students	Registered students	N. first year enrolments	Total N. enrolled students
Study Programme	61	76	215	87	94	267	82	99	288
Average of similar Study Programmes	231,5	280,4	380,7	263,1	313,5	373,9	247,4	291,3	358,7

D.1.2. ADDITIONAL DATA ON STUDENTS' STARTING THEIR UNIVERSITY CAREERS

D.1.2.1. CANDIDATES REGISTERED FOR THE ENTRANCE EXAM

The number of students sitting the [entrance exam](#) for the Study Programme. Concerns the programmes with restricted access. The methods of managing the call for applications and the list of candidates, including the methods for filling any unclaimed places, may vary from year to year.

The **table** shows the number of places available for the study programme, the number of candidates enrolling for the exam, the number sitting the exam and the percentage of students sitting the exam compared to the number of places available.

For all programmes with restricted access, candidates are required to sit an entrance exam and there are a limited number of places available. The entrance exam is a test which is used to draw up a graded list of candidates; students may enrol in the programme according to their place in the list. The methods of managing the call for applications and the list of candidates, including the methods for filling any unclaimed places, may vary from year to year. The test may be specific to a Degree Programme or may be part of a single exam covering several programmes from the same university or from other universities (during the registration the students should indicate their first choice).

The following definitions apply:

Available places = the number of places laid down in the call for applications to the Study Programme, or determined by subsequent legal provisions; these exclude any additional places reserved according to special provisions of the programme (e.g. for international study programmes, they do not include places for foreign students selected from other universities; for all programmes with restricted access regulated nationally, these do not include the places reserved for transferring students).

Number of candidates for the exam = number of students registered for the exam indicating the study programme as their first choice;

Number of participants in the exam = number of students participating in the exam indicating the study programme as their first choice;

Number of participants in the exam for every available place = number of students participating in the exam who indicated the study programme as their first choice as a ratio of the number of places available on the programme.

	Number of places available (a)	Candidates registered for the exam	Candidates sitting the exam (b)	Number of candidates sitting the exam per place available (b/a)
a.y. 2010/2011	80	222	207	2,6
a.y. 2011/2012	100	252	239	2,4
a.y. 2012/2013	100	377	350	3,5

D.1.2.2. INCOMING STUDENTS

Geographic origin, type of high school certificate, age and gender of students.

Data shows a homogeneous group of students (**cohort**) which started together their academic career. Students which have **passed** to an other Study Programme, **transferred** from an other university, or registered to a 2nd degree are not included.

The **tables** show the number, geographic origin, gender, age, type and grade of high school certificate of students enrolling in the degree programme.

Data of the Study Programme is compared with the average of the Study Programmes of **average of similar Study Programmes** (which belong to the same group) for the indicated academic years.

		Registered students	Geographic origin					Gender		Average age of registered students		
			Students coming from the province of the Study Programme site	Students coming from other provinces where Unibo has a site	Students coming from other provinces of Emilia Romagna region	Students coming from other Italian regions	Students coming from abroad	M	F	19 or less	20 - 24	25 or more
Students 2010/2011	Study Programme	61	9,8%	9,8%	31,1%	49,2%		11,5%	88,5%	91,8%	8,2%	
	Average of similar Study Programmes	231,5	21,9%	16,3%	16,3%	42,9%	2,6%	27,6%	72,4%	60,8%	31,4%	7,8%
Students 2011/2012	Study Programme	87	21,8%	11,5%	18,4%	47,1%	1,1%	27,6%	72,4%	81,6%	17,2%	1,1%
	Average of similar Study Programmes	263,1	20,5%	16,6%	15,4%	45,0%	2,5%	29,5%	70,5%	61,4%	33,2%	5,4%
Students 2012/2013	Study Programme	82	19,5%	7,3%	30,5%	42,7%		15,9%	84,1%	90,2%	9,8%	
	Average of similar Study Programmes	247,4	20,7%	15,4%	14,7%	45,9%	3,3%	29,1%	70,9%	61,3%	32,8%	5,8%

		High school certificate					Grade of High school			
		Vocational schools	Technical Colleges	High school specializing in education and in psycho-pedagogical science	High schools specializing in classical studies, modern languages, science education	Other Italian or foreign high schools	Grade ranging from 60 to 69	Grade ranging from 70 to 79	Grade ranging from 80 to 89	Grade ranging from 90 to 100
Students 2010/2011	Study Programme		4,9%	4,9%	90,2%		11,5%	21,3%	39,3%	27,9%
	Average of similar Study Programmes	9,5%	16,3%	8,5%	57,8%	8,0%	25,6%	31,1%	23,7%	19,1%
Students 2011/2012	Study Programme		16,1%	1,1%	80,5%	2,3%	12,6%	29,9%	23,0%	34,5%
	Average of similar Study Programmes	8,9%	13,4%	14,7%	55,8%	7,1%	24,0%	32,8%	23,0%	19,4%
Students 2012/2013	Study Programme		7,3%	1,2%	64,6%	26,8%	4,9%	24,4%	20,7%	23,2%
	Average of similar Study Programmes	8,2%	13,1%	14,4%	55,3%	8,9%	24,9%	28,5%	23,7%	18,1%

D.1.2.3. ADDITIONAL LEARNING REQUIREMENTS

Students on the programme assigned **additional learning requirements** (OFA). OFA are learning requirements assigned to enrolled students who have not demonstrated the full possession of the entrance requirements. The assessment methods of students' initial preparation and the fulfilment of the OFA are described in the Study Programme Regulations, and may change each year. Students not completing the additional learning requirements are obliged to re-enrol in year 1 as repeating students.

The **table** shows the number of **registered students**, the number of students assigned OFA, the number who fulfilled them, the percentage of students assigned the OFA compared to the number of enrolled students and the percentage fulfilling the OFA compared to those assigned them.

	Registered students (a)	Students assigned OFA (b)	Students who fulfilled OFA (c)	% of students assigned OFA compared to the number of enrolled students (b/a)	% of students fulfilling the OFA compared to number of students assigned (c/b)
Students 2010/2011	61	0	7	10,3%	77,8%
Students 2011/2012	87	9	7	10,3%	77,8%
Students 2012/2013	82	0			

*Note: At the time of publication of this report the number of students fulfilling the OFA can be measured for a.y. 2009/2010 and a.y. 2010/2011 only.

D.2. REGULARITY OF STUDIES

Insight into the regularity with which the students pass their exams.

Graphs and tables provide information on the number of students who leave the programme after the first year and the number of regular graduates, focusing on the number of credits obtained at the end of the first year, on the exams passed and average grade achieved for each course unit.

D.2.1. STUDENTS LEAVING THE PROGRAMME BETWEEN YEARS 1 AND 2

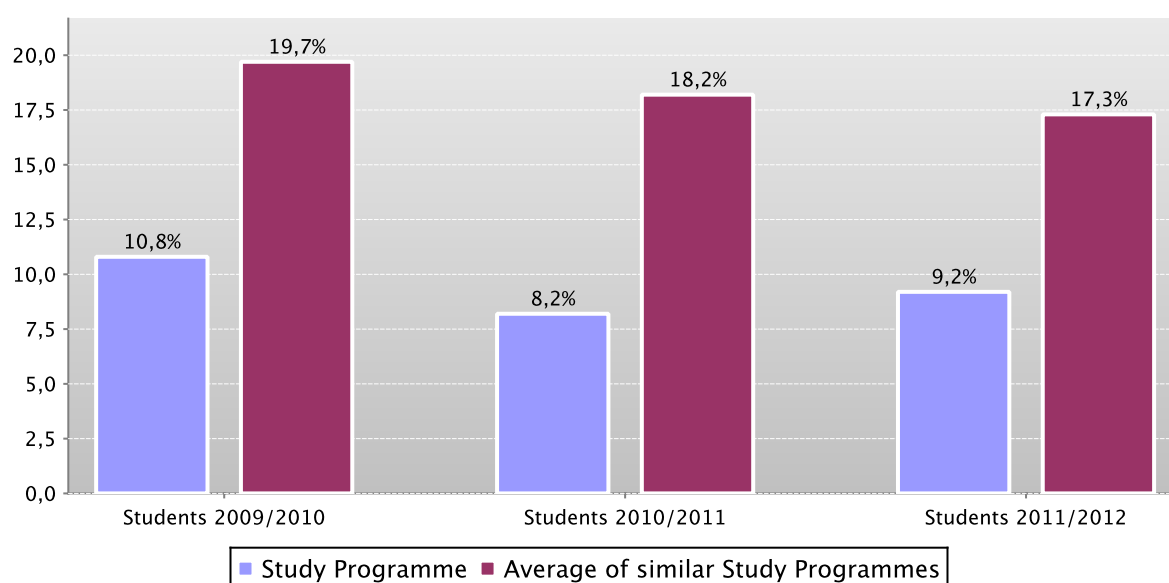
Here the number of students leaving the Study Programme is shown.

The **graph** shows the percentage of students who leave the programme after the first year compared to the average of similar Study Programmes (belonging to the same group).

The **table** shows the registered students, the percentage of students leaving the programme who pass to a different Study Programme in the same university, transfer to another university or withdraw from studies, as well as the enrolled repeating students and those enrolled in the second year.

The Study Programme data is compared with the average of similar Study Programmes of (which belong to the same group), for students registered in the indicated academic years.

Percentage of withdrawals between years 1 and 2



		Registered students	% withdrawals	% passages and transfers	% repeating students	Students enrolled in the second year
Students 2009/2010	Study Programme	65	10,8%	3,1%	0,0%	56
	Average of similar Study Programmes	189,8	19,7%	5,6%	0,4%	141,1
Students 2010/2011	Study Programme	61	8,2%	6,6%	0,0%	52
	Average of similar Study Programmes	231,5	18,2%	5,9%	1,4%	172,5
Students 2011/2012	Study Programme	87	9,2%	3,4%	0,0%	76
	Average of similar Study Programmes	263,1	17,3%	6,1%	0,5%	200,4

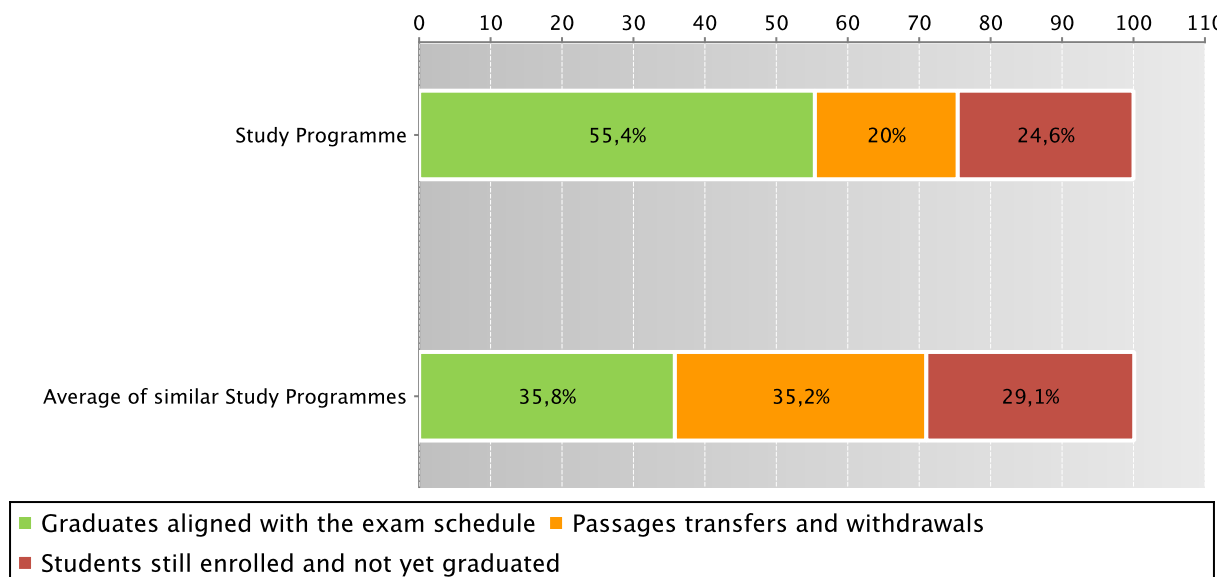
D.2.2. REGULAR GRADUATES

Here you will find information on regular graduates, on how many students, at the end of the regular programme duration, left the programme and how many are still enrolled but **not aligned to the exam schedule**.

The **graph** and the **table** show the situation concerning **registered students** for the indicated academic year, at the end of the regular duration of the Study Programme, highlighting the percentage of regular graduates, the number of students still enrolled (**not aligned to the exam schedule** and **repeating students**), students who have left the programme (including **passages**, **transfers** and **withdrawals**).

The Study Programme data is compared with the average of **similar Study Programmes** (which belong to the same group) for students registered in the indicated academic years.

Situation of students 2009/2010 at the end of regular duration of the study programme



	Registered students	Regular graduates		Passages transfers and withdrawals		Students still enrolled and not yet graduated		
		N.	%	N.	%	N.	%	
Students 2008/2009	Study Programme	65	24	36,9%	16	24,6%	25	38,5%
	Average of similar Study Programmes	188,1	66,7	35,4%	63,1	33,5%	58,3	31,0%
Students 2009/2010	Study Programme	65	36	55,4%	13	20,0%	16	24,6%
	Average of similar Study Programmes	189,8	67,9	35,8%	66,7	35,2%	55,2	29,1%

See data of previous academic years – Study Programme D.M. 509/99 Asian Languages, Markets and Cultures (code 0534) [paragraph D.5.2.2.](#)

D.2.3. ADDITIONAL DATA ON REGULARITY OF STUDIES

D.2.3.1. CREDITS OBTAINED BY STUDENTS IN THE 1ST YEAR

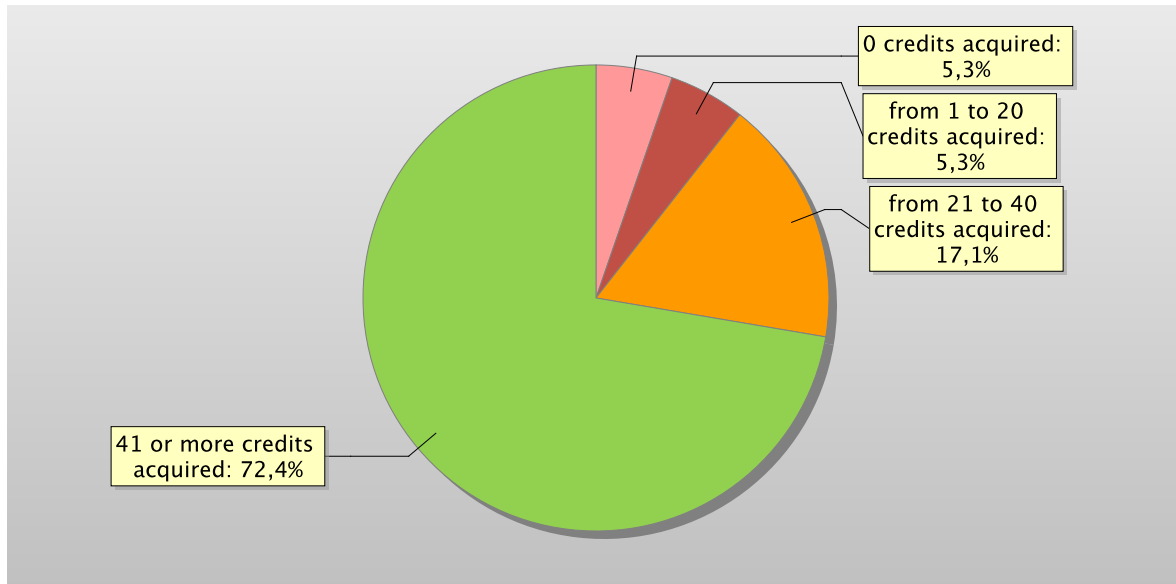
This offers an insight into how regularly students pass their exams.

The **graph** shows the distribution of the students according to the number of **credits** obtained at the end of the first year.

In addition, the **table** shows the number of students registered at the second year and average **credits** obtained during the first year.

The Study Programme data is compared with the average of **similar Study Programmes** (which belong to the same group) for the indicated academic years.

Distribution of the students in 2011/2012 according to the number of credits obtained at the end of the first year*



		Students enrolled in the 2nd year	% students with *				Average credits per student
			0 credits acquired	from 1 to 20 credits acquired	from 21 to 40 credits acquired	41 or more credits acquired	
Students 2009/2010	Study Programme	56	3,6%	3,6%	16,1%	76,8%	50,6
	Average of similar Study Programmes	148,9	3,5%	11,2%	30,7%	54,6%	40,2
Students 2010/2011	Study Programme	52	7,7%	3,8%	11,5%	76,9%	49,2
	Average of similar Study Programmes	172,5	3,7%	9,8%	31,0%	55,6%	40,6
Students 2011/2012	Study Programme	76	5,3%	5,3%	17,1%	72,4%	47,4
	Average of similar Study Programmes	200,4	2,9%	8,7%	29,0%	59,4%	42

*Note: by convention, credits are considered to be obtained by students by 31st October of the year following the year of enrolment.

D.2.3.2. EXAMS PASSED AND AVERAGE GRADE

The **table** shows number of exams passed and average grade achieved for each course unit in the calendar year 2011. Marks for the exams passed are expressed out of thirty.

The data refers to the course unit code and therefore includes the various branches of the programme divided into channels or sub-groups, divided by letter.

It considers all subjects for which a grade is assigned, and therefore excludes all those to which a pass/fail score is allocated.

Data of the Study Programme D.M. 270/04 Lingue, mercati e culture dell'asia (code 0980)

	N. of exams passed	Average grade *
00045 ANTROPOLOGIA CULTURALE	1	
00256 ECONOMIA POLITICA	28	27,8
00463 GEOGRAFIA POLITICA ED ECONOMICA	95	28,9
00905 SOCIOLOGIA	7	22,1
02529 ECONOMIA AZIENDALE	43	24,2
02537 ECONOMIA INTERNAZIONALE	10	26,6
02609 LETTERATURA ITALIANA CONTEMPORANEA	59	28,4
03385 ECONOMIA APPLICATA	2	
03583 STORIA DELL'ASIA ORIENTALE	76	27,8
03977 ECONOMIA DEL LAVORO	28	26,3
04365 STORIA DEI PAESI ISLAMICI	13	28,8
05515 STORIA DELLE RELAZIONI INTERNAZIONALI	40	27,8
07235 SOCIOLOGIA DELLE RELAZIONI INTERNAZIONALI	3	
08540 SOCIOLOGIA DELLO SVILUPPO	13	27,3
08845 STORIA DELL'ARTE DELL'ASIA ORIENTALE	13	27,5
11483 ECONOMIA DELLO SVILUPPO	23	27,7
12512 ECONOMIA E GESTIONE DELLE IMPRESE	63	25,8
14090 ECONOMIA DELL'INNOVAZIONE	46	28,8
18056 BILANCI AZIENDALI	3	
19695 GEOGRAFIA DELLO SVILUPPO	94	28,8
30923 LINGUISTICA GENERALE 1	82	26,4
30931 LETTERATURA ITALIANA 1	28	28,4
30951 LINGUA E LINGUISTICA INGLESE 1	64	26
30965 LINGUA E LINGUISTICA PORTOGHESE E BRASILIANA 1	1	
30972 LINGUA E LINGUISTICA SPAGNOLA 1	8	24,9
30976 LINGUA E LINGUISTICA TEDESCA 1	6	27,3
31065 LINGUA E LINGUISTICA ARABA 1	10	27,6
31068 LINGUA E LINGUISTICA CINESE 1	41	24,2
31070 LINGUA E LINGUISTICA GIAPPONESE 1	14	27,7
31147 LINGUA E LINGUISTICA FRANCESE 2	3	
31150 LINGUA E LINGUISTICA INGLESE 2	45	24,2
31171 LINGUA E LINGUISTICA PORTOGHESE E BRASILIANA 2	2	
31182 LINGUA E LINGUISTICA SPAGNOLA 2	3	
31187 LINGUA E LINGUISTICA TEDESCA 2	6	25,7
31199 LINGUA E LINGUISTICA ARABA 2	11	26,8
31206 LINGUA E LINGUISTICA CINESE 2	30	26,1

	N. of exams passed	Average grade *
31211 LINGUA E LINGUISTICA GIAPPONESE 2	17	27,2
31299 LINGUA E LINGUISTICA FRANCESE 3	3	
31300 LINGUA E LINGUISTICA INGLESE 3	47	25,4
31304 LINGUA E LINGUISTICA PORTOGHESE E BRASILIANA 3	1	
31307 LINGUA E LINGUISTICA SPAGNOLA 3	5	
31308 LINGUA E LINGUISTICA TEDESCA 3	2	
31311 LINGUA E LINGUISTICA ARABA 3	9	26,4
31312 LINGUA E LINGUISTICA CINESE 3	25	27
31313 LINGUA E LINGUISTICA GIAPPONESE 3	17	27,1
31551 STORIA DEL PENSIERO ISLAMICO	12	28,4
31563 CULTURA E LETTERATURA CINESE 1	39	27,7
31564 CULTURA E LETTERATURA GIAPPONESE 1	19	29,3
31569 CULTURA E LETTERATURA ARABA 1	7	29,7
31608 CULTURA E LETTERATURA CINESE 2	27	27,7
31609 CULTURA E LETTERATURA GIAPPONESE 2	19	29,6
31612 CULTURA E LETTERATURA ARABA 2	11	29,3
31658 DIRITTO DEI PAESI ISLAMICI	11	29,3
40089 STORIA DELL'ARTE DELL'ASIA CENTRALE	1	
48067 DIRITTO DEI PAESI ASIATICI	47	29
49886 FILOSOFIE DELL'ASIA ORIENTALE	72	29
67711 SOCIOLOGIA DEI PAESI ASIATICI	17	24,4

* Note: no average grade is given if the number of exams passed is less than or equal to 5.

D.3. OPINIONS OF GRADUATES AND ATTENDING STUDENTS

Opinions of graduates on the Study Programme.

Tables and graphs provide information on the number of graduates who expressed positive opinions on the Study Programme, focusing on opinions expressed by attending students on course units.

D.3.1. OPINION OF GRADUATES

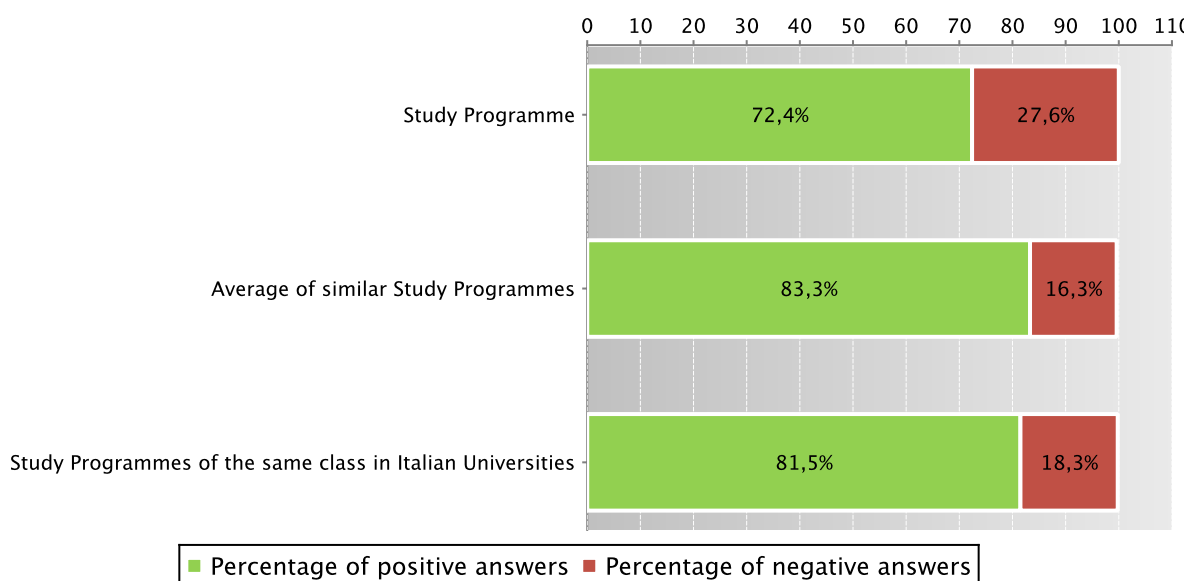
The **graph** shows the percentage of graduates (AlmaLaurea survey) who responded positively to the question: “**Are you generally satisfied with the Study Programme**”.

In addition, the **table** shows the percentage of students who answered “Yes, to the same programme at the university” to the question “Would you register again to the university?”.

The Study Programme data is compared with the average of similar Study Programmes (which belong to the same group), and the average of Study Programmes of the same class of other Italian universities for the graduates of the indicated years.

Graduates in 2012 who responded positively to the question: “Are you generally satisfied with this Study Programme?”

Data of the Study Programme D.M. 270/04 Lingue, mercati e culture dell'asia (code 0980)



Data of the Study Programme D.M. 270/04 Lingue, mercati e culture dell'asia (code 0980)

		N. graduates	Completed Questionnaires	% of positive answers to the question: “Are you generally satisfied with this Study Programme?”	% of answers “yes to the same Programme in the same University” to the question “Would you register again to the University?”
2011	Study Programme	9	8	100,0%	100,0%
	Average of similar Study Programmes	70,9	65,6	81,3%	63,8%
	Study Programmes of the same class in Italian Universities	739	708	87,0%	66,1%
2012	Study Programme	60	58	72,4%	51,7%
	Average of similar Study Programmes	72,1	68,4	83,3%	67,0%
	Study Programmes of the same class in Italian Universities	2399	2277	81,5%	59,1%

Symbols:

(*) The opinions of the Study Programmes with less than 5 graduates are not shown.

Further information on [Graduates' Profile Report](#).

See data of previous academic years – Study Programme D.M. 509/99 Asian Languages, Markets and Cultures (code 0534) [paragraph D.5.3.1](#).

D.3.2 ADDITIONAL DATA ON OPINIONS OF STUDENTS

D.3.2.1. OPINION OF ATTENDING STUDENTS

The **graph** shows the percentage of attending students who responded positively to the question in the questionnaire: “Are you generally satisfied with this course unit?” in academic year 2011/2012.

The **table** also shows the number of completed questionnaires.

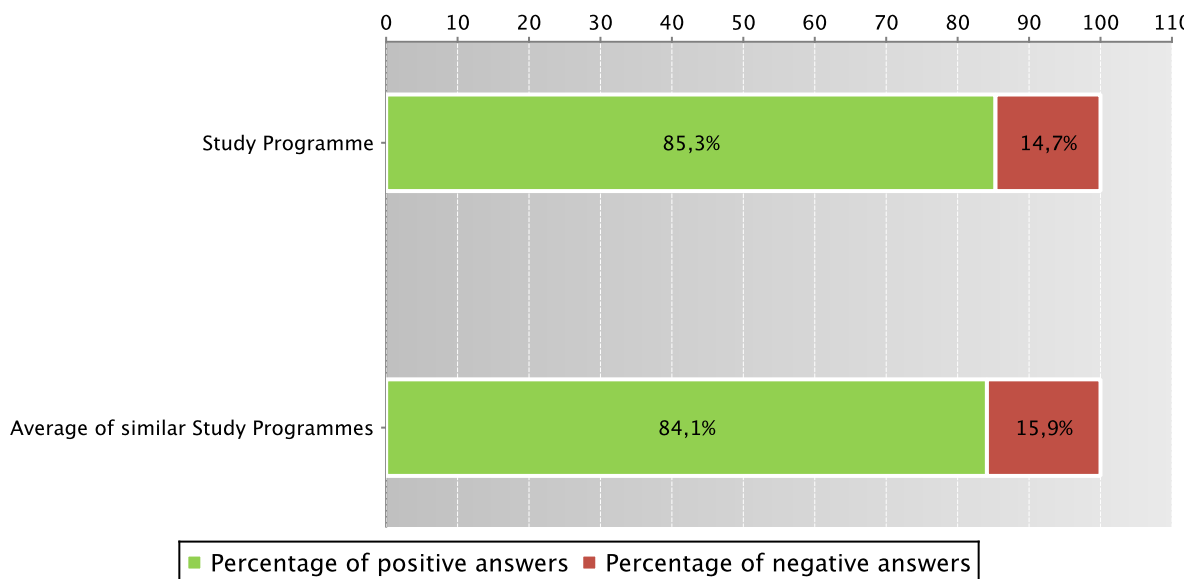
The Study Programme data is compared with the [average of similar Study Programmes \(which belong to the same group\)](#), for the indicated academic years.

The data concerning the students' opinion refers to the opinions of those attending lessons, whether they are enrolled in the current programme or a Study Programme running under pre-reform regulations (under D.M. 509).

For the University of Bologna the survey and subsequently analysis of the opinions of students attending the course is cared by Academic Affairs Division - Quality Assurance Department and Control and Finance Division - Support Planning and Evaluation Department. The overall results and the methods of collection and analysis are described in the document published online on the [Statistical Observatory of the University of Bologna](#) (see the note in the glossary).

Students who responded positively to the question: “Are you generally satisfied with this course unit?” in academic year 2011/2012

Data of the Study Programme D.M. 270/04 Lingue, mercati e culture dell'asia (code 0980) and of the Study Programme D.M. 509/99 Lingue, mercati e culture dell'asia (code 0534)



Data of the Study Programme D.M. 270/04 Lingue, mercati e culture dell'asia (code 0980) and of the Study Programme D.M. 509/99 Lingue, mercati e culture dell'asia (code 0534)

		Number of completed questionnaires	% of positive answers concerning the general satisfaction with the course unit – Question 19
a.y. 2009/2010	Study Programme	510	84,4%
	Average of similar Study Programmes	1529,9	83,6%
a.y. 2010/2011	Study Programme	400	84,6%
	Average of similar Study Programmes	1445,9	83,8%
a.y. 2011/2012	Study Programme	690	85,3%
	Average of similar Study Programmes	1839,3	84,1%

Symbols:

(*) When there is a small number of questionnaires, the percentage of positive opinions on overall satisfaction is not presented.

Further information on [Rapporto Opinione degli studenti frequentanti sulle attività didattiche](#) (the content is in Italian).

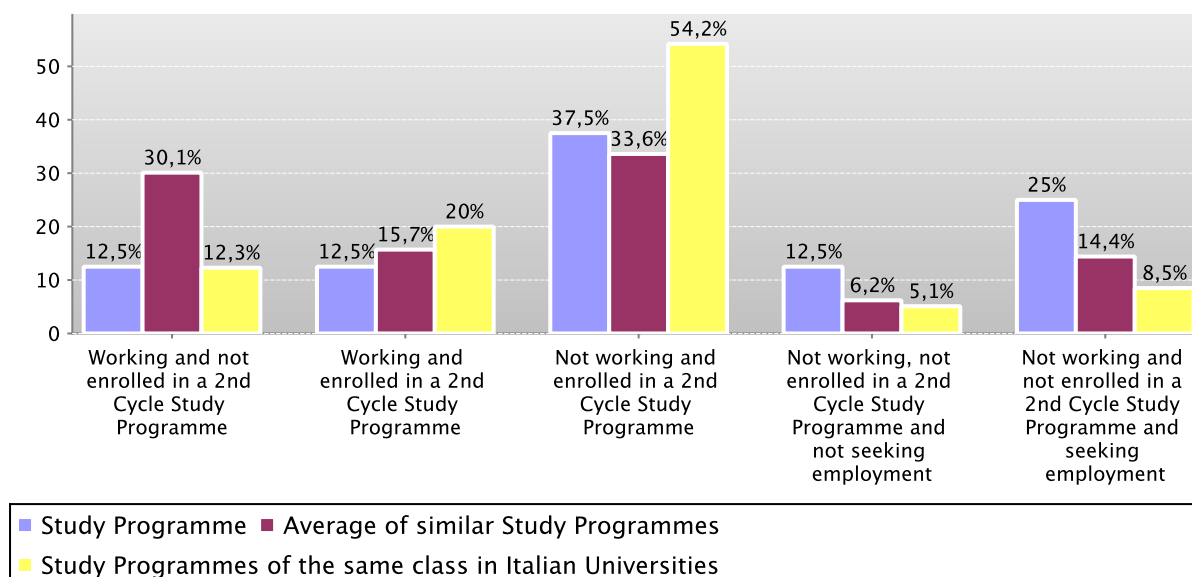
D.4. ENTRY INTO THE WORLD OF WORK

Employment situation of graduates of the Study Programme.

Tables and graphs provide information on the employment situation of graduates one year after graduating.

D.4.1. EMPLOYMENT SITUATION

Employment situation of graduates in 2011 one year after graduating



		N. graduates interviewed	Employment and education situation (1)					Not working, not seeking employment, but following a university programme/traineeship (2)	Degree's appropriateness for the job (referred to the graduates who just work) (3)	
			Working and not enrolled in a 2nd Cycle Study Programme	Working and enrolled in a 2nd Cycle Study Programme	Not working and enrolled in a 2nd Cycle Study Programme	Not working, not enrolled in a 2nd Cycle Study Programme and not seeking employment	Not working and not enrolled in a 2nd Cycle Study Programme and seeking employment		Effective / very effective	Quite effective
Graduation Year 2011	Study Programme	8	12,5%	12,5%	37,5%	12,5%	25,0%	37,5%		50,0%
	Average of similar Study Programmes	61,3	30,1%	15,7%	33,6%	6,2%	14,4%	26,9%	30,2%	27,8%
	Study Programmes of the same class in Italian Universities	626	12,3%	20,0%	54,2%	5,1%	8,5%	40,7%	30,5%	29,9%

See data of previous academic years – Study Programme D.M. 509/99 Asian Languages, Markets and Cultures (code 0534) [paragraph D.5.4.1.](#)

D.5. INFORMATION ON PRE-REFORM PROGRAMMES (DM 509/99)

D.5.1. STUDENTS STARTING THEIR UNIVERSITY CAREERS

Characteristics of incoming students at the beginning of their university careers. Tables and graphs provide information on the number of registered students, focusing on the characteristics of the students, results of any entrance tests and students assigned additional learning requirements.

D.5.1.1. ENROLMENTS AND REGISTRATIONS

Data of enrolments and registrations of the last three academic years are shown in [paragraph D.1.1.](#)

D.5.1.2. ADDITIONAL DATA ON STUDENTS' STARTING THEIR UNIVERSITY CAREERS

D.5.1.2.1. CANDIDATES REGISTERED FOR THE ENTRANCE EXAM

Data of candidates registered for the entrance exam are shown in [paragraph D.1.2.1.](#)

D.5.1.2.2. INCOMING STUDENTS

Data of incoming students of the last three academic years are shown in [paragraph D.1.2.2.](#)

D.5.2. REGULARITY OF STUDIES

Insight into the regularity with which the students pass their exams.

Graphs and tables provide information on the number of students who leave the programme after the first year and the number of regular graduates, focusing on the number of credits obtained at the end of the first year, the number of exams passed and the average grade achieved for each course unit.

D.5.2.1. STUDENTS LEAVING THE PROGRAMME BETWEEN YEARS 1 AND 2

Data of students leaving the Study Programme of the last three academic years are shown in [paragraph D.2.1.](#)

D.5.2.2. REGULAR GRADUATES

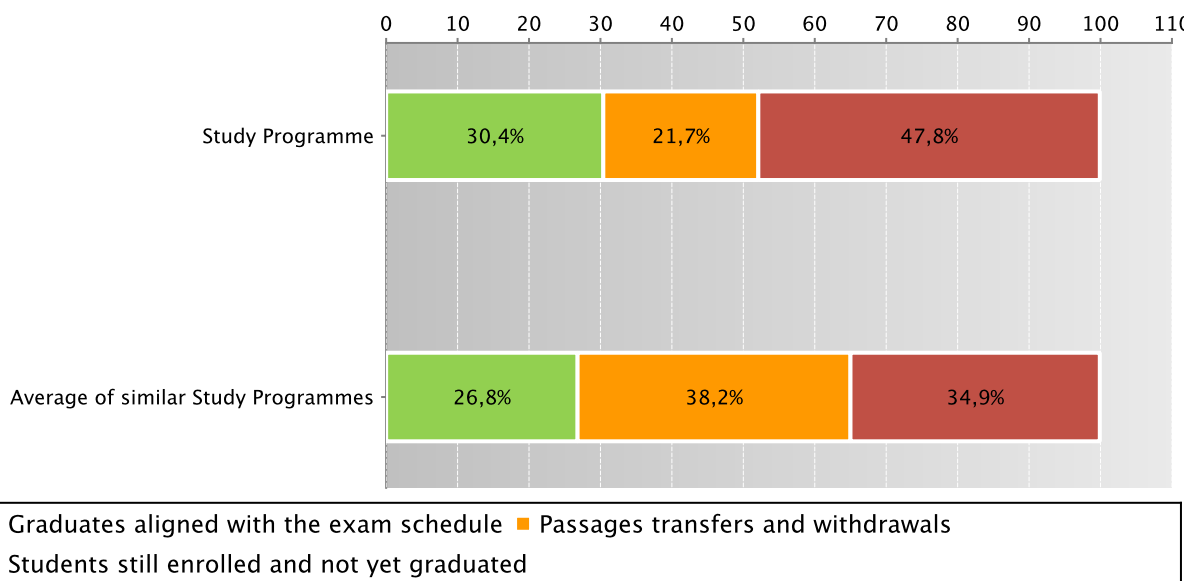
Here you will find information on regular graduates, on how many students, at the end of the regular programme duration, left the programme and how many are still enrolled but not aligned to the exam schedule.

The **graph** and the **table** show the situation concerning **registered students** for the indicated academic year, at the end of the regular duration of the Study Programme, highlighting the percentage of regular graduates, the number of students still enrolled (**not aligned to the exam schedule** and **repeating** students), students who have left the programme (including **passages**, **transfers** and **withdrawals**).

The Study Programme data is compared with the average of **similar Study Programmes** (which belong to the same group) for students registered in the indicated academic years.

Situation of students 2007/2008 at the end of regular duration of the study programme

Data of the Study Programme D.M. 509/99 Asian Languages, Markets and Cultures (code 0534)



Data of the Study Programme D.M. 509/99 Asian Languages, Markets and Cultures (code 0534)

	Registered students	Regular graduates		Passages transfers and withdrawals		Students still enrolled and not yet graduated		
		N.	%	N.	%	N.	%	
Students 2007/2008	Study Programme	69	21	30,4%	15	21,7%	33	47,8%
	Average of similar Study Programmes	175	47	26,8%	67	38,2%	61,1	34,9%

Go back to [D.2.2. Regular graduates](#)

D.5.2.3. ADDITIONAL DATA ON REGULARITY OF STUDIES

D.5.2.3.1. CREDITS OBTAINED BY STUDENTS IN THE 1ST YEAR

Data of credits obtained by students in the 1st year of the last three academic years are shown in paragraph [D.2.3.1.](#)

D.5.2.3.2. EXAMS PASSED AND AVERAGE GRADE

Data of exams passed and average grade are shown in paragraph [D.2.3.2.](#)

D.5.3. OPINIONS OF ATTENDING STUDENTS AND GRADUATES

Opinions of graduates on the Study Programme.

Tables and graphs provide information on the number of graduates who expressed positive opinions on the Study Programme, focusing on opinions expressed by attending students on course units.

D.5.3.1. OPINION OF GRADUATES

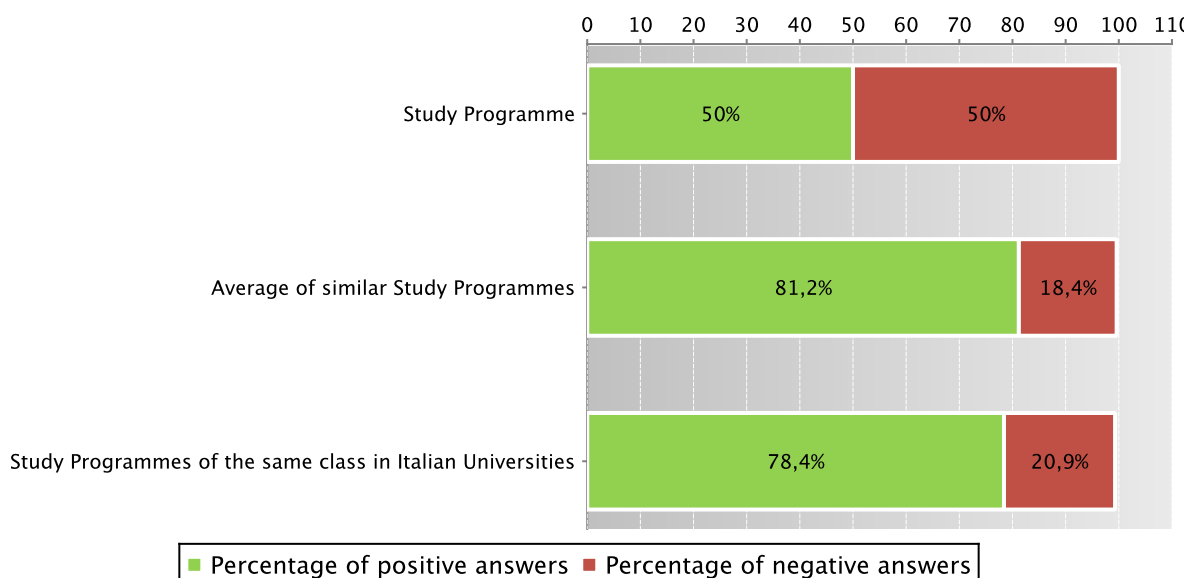
The **graph** shows the percentage of graduates (AlmaLaurea survey) who responded positively to the question: “**Are you generally satisfied with the Study Programme**”.

In addition, the **table** shows the percentage of students who answered “Yes, to the same programme at the university” to the question “Would you register again to the university?”.

The Study Programme data is compared with the average of similar Study Programmes (which belong to the same group), for the indicated years.

Graduates in 2010 who responded positively to the question: “Are you generally satisfied with this Study Programme?”

Data of the Study Programme D.M. 509/99 Lingue, mercati e culture dell'asia (code 0534)



Data of the Study Programme D.M. 509/99 Lingue, mercati e culture dell'asia (code 0534)

		N. graduates	Completed Questionnaires	% of positive answers to the question: “Are you generally satisfied with this Study Programme?”	% of answers “yes to the same Programme in the same University” to the question “Would you register again to the University”
2010	Study Programme	36	34	50,0%	38,2%
	Average of similar Study Programmes	114,7	103	81,2%	63,5%
	Study Programmes of the same class in Italian Universities	4784	4501	78,4%	53,2%

Symbols:

(*) The opinions of the Study Programmes with less than 5 graduates are not shown.

Further information on [Graduates’ Profile Report](#).

Go back to [D.3.1. Opinion of graduates](#)

D.5.3.2 ADDITIONAL DATA ON OPINIONS OF STUDENTS

D.5.3.2.1. OPINION OF ATTENDING STUDENTS

Data of opinion of attending students of the last three academic years are shown in paragraph D.3.2.1.

D.5.4. ENTRY INTO THE WORLD OF WORK

Employment situation of graduates of the Study Programme.

Tables and graphs provide information on the employment situation of graduates one year after graduating.

D.5.4.1. EMPLOYMENT SITUATION

The paragraph shows the employment situation of graduates one year after graduating.

The data is taken from the [AlmaLaurea](#) reports on the employment situation of graduates.

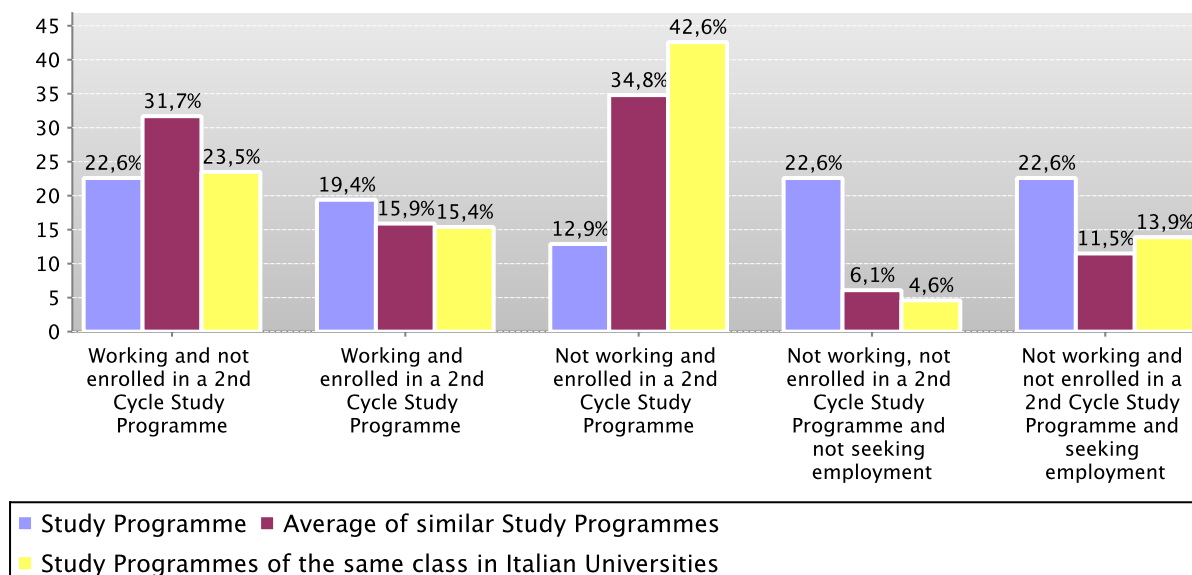
The **graph** shows who is working, who is not working but has enrolled in a Second Cycle study programme, who is not working and is not seeking employment, who is not working but is seeking employment.

In addition, the **table** shows the number of graduates interviewed, the number involved in internships and traineeships and the appropriateness of their degree to the job.

The Study Programme data is compared with the average of **similar Study Programmes (which belong to the same group)** and the average of Study Programmes of the same faculty of other Italian universities for the graduates of the indicated years.

Employment situation of graduates in 2010 one year after graduating

Data of the Study Programme D.M. 509/99 Asian Languages, Markets and Cultures (code 0534)



Data of the Study Programme D.M. 509/99 Asian Languages, Markets and Cultures (code 0534)

		N. graduates interviewed	Employment and education situation (1)					Not working, not seeking employment, but following a university programme/traineeship (2)	Degree's appropriateness for the job (referred to the graduates who just work) (3)	
			Working and not enrolled in a 2nd Cycle Study Programme	Working and enrolled in a 2nd Cycle Study Programme	Not working and enrolled in a 2nd Cycle Study Programme	Not working, not enrolled in a 2nd Cycle Study Programme and not seeking employment	Not working and not enrolled in a 2nd Cycle Study Programme and seeking employment		Effective / very effective	Quite effective
Graduation Year 2009	Study Programme	31	12,9%	16,1%	38,7%	9,7%	22,6%	35,5%	12,5%	50,0%
	Average of similar Study Programmes	117,8	30,0%	17,9%	35,5%	5,8%	10,8%	28,8%	33,7%	28,1%
	Study Programmes of the same class in Italian Universities	4030	23,2%	17,7%	42,6%	4,9%	11,6%	27,7%	28,8%	32,6%
Graduation Year 2010	Study Programme	31	22,6%	19,4%	12,9%	22,6%	22,6%	19,4%	16,7%	50,0%
	Average of similar Study Programmes	97	31,7%	15,9%	34,8%	6,1%	11,5%	26,7%	32,4%	25,8%
	Study Programmes of the same class in Italian Universities	4186	23,5%	15,4%	42,6%	4,6%	13,9%	27,6%	26,8%	32,0%

Symbols:

(*) The opinions of the Study Programmes with less than 5 graduates are not shown.

Notes on the AlmaLaurea report on the employment situation of graduates

(1) "Employment and education situation": the number of employed graduates is the sum of those working and those working who are also enrolled in a 2nd cycle degree programme. The number of those enrolled in a 2nd cycle degree programme is the sum of those who are working and studying and those who are only studying.

(2) "Number of those who do not work, who are not seeking employment but who are following a university programme/traineeship": the definition includes those who are enrolled in traineeships, PhD degrees, specialisation schools, Italian "master universitari" (first and second level). The presentation of this data complies with article 2 of D.M. 544 of 31st October 2007, as later provided for in Management Decree no. 61 of 10th June 2008 (transparency requirements).

(3) The evaluation of the appropriateness of the degree is obtained by a combination of the requirement of the relative qualification for the job held and the level of usage of the skills learned at university.

Further information on [Graduates' Employment report](#).

[Go back to D.4.1. Employment situation](#)

E. FIND OUT MORE: THE QUALITY OF YOUR STUDY PROGRAMME

The University of Bologna has identified its objectives as the *personal, cultural and professional growth of students and the improvement of the quality of learning, also in relation to the needs of society* (Strategic Plan 2010-2013).

Students, employers and society as a whole, have the right to effective learning for individual and intellectual growth, to develop critical sense and to prepare for the world of work.

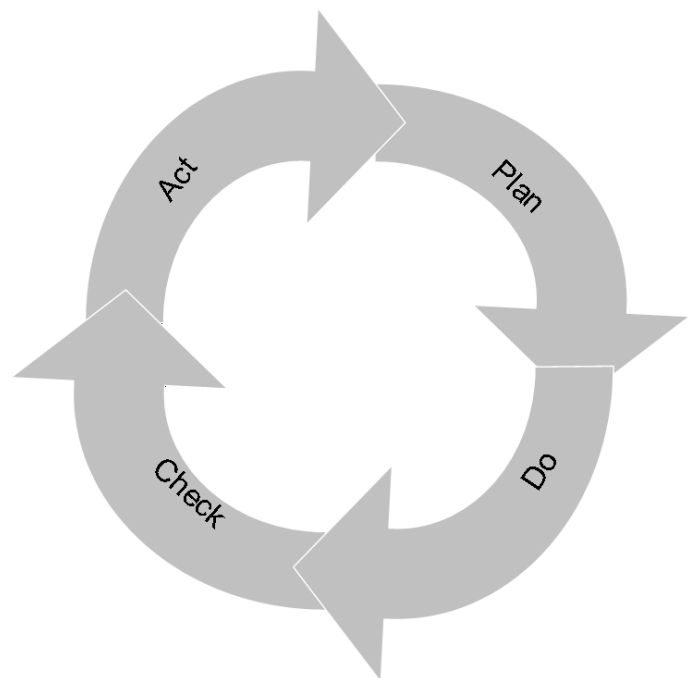
In the Statute and the Strategic Plan 2010-2013 the University of Bologna acknowledges its responsibility in guaranteeing the quality of its study programmes, and for this purpose adopts an "internal quality assurance system".

The Internal Quality Assurance system

The internal quality assurance system is a set of processes and responsibilities adopted to guarantee the quality of Study Programmes at the University of Bologna.

The guarantee of the quality of a Study Programme is the correspondence of the results achieved with the set objectives, in the following phases:

- Plan: defining the objectives
- Do: implementing the planned actions
- Check: checking that the objectives have been achieved
- Act: planning improvement action



This path responds to the expectations of students, guides teaching behaviour and provides indicators for the assessment of results. Self-assessment is based on the analysis of significant data (for example, the number of students graduating in line with the exam schedule, students' opinions and the employment rates of graduates) and highlights strengths and weaknesses in order to reflect on the achieved results, critically consider one's own working methods and take steps for the continual improvement of the Programme. This path involves all educational stakeholders, including students, in order to make use of the contributions of everyone with first-hand knowledge of the Study Programme. Improvement is therefore a day to day development, concerning all aspects of teaching: from the lesson timetable to the publication of on-line programmes, from classroom management to exam methods, and the actual design of the Programme.

This is what happens in each phase:

- **Planning:** the Study Programme is the result of a proposal from the teaching structures and approved by the Academic Bodies.
- **Management:** Schools, Departments and Study Programmes manage the activities required to ensure teaching. The activities are organised as follows:

What we do	Who does what				
	Professors	Study Programme	Schools	Departments	General Administration
Teaching calendar, lessons programme and exam schedules			x		
Management of financial resources			x	x	
Classroom teaching	x				
Management of classrooms and laboratories			x	x	
Libraries and study rooms			x	x	
Approval of individual study plans		x			
Communication and information		x	x		Academic Affairs Division
Guidance service		x	x		Academic Affairs Division
Internships		x	x		Academic Affairs Division
Administrative services: Student Administration Office					Academic Affairs Division
Administration services: Degree programme office			x		Academic Affairs Division
Study grants and loans ad honorem					Academic Affairs Division
Student mobility: university subsidies and programmes					International Relations Division
Mobility: study grants for dissertations abroad			x		
Mobility: authorisations and recognitions		x			
Other students support services		x	x		x

- **Internal assessment:** every Study Programme periodically assesses its own results, evaluating, for example, the number of enrolled students, the number of withdrawing students, student opinions etc.; in this way, the strengths and weaknesses, as well as any implemented improvement actions, are highlighted. This phase is organised as follows:

What we do

Definition, gathering and publication of evaluation data

According to the general guidelines of the University and national and international standards, are defined the tools through which should be evaluated the results (indicators). The survey data to be evaluate are published every year on the Report of the Study Program.

Who does what

Academic Bodies

Self-Assessment

The Schools and Study Programmes assess the effectiveness of the previously adopted solutions, analyse the progress of their learning activities and draw up proposals for improvement.

Schools and Study Programmes

Internal audit

The results of the self-assessment process are reviewed in the following phases:

- **Analysis:** the University Quality Manager analyses the review documents, considering the ability to identify problems, propose solutions and the overall development of the internal quality assurance system.
- **Review:** The observations on the results obtained and the good practices adopted are examined together with the persons in charge of the Schools and Study Programmes in meetings organised by scientific-disciplinary field. The persons in charge receive the observations and inputs on the areas for development and the actions to be adopted in future to improve results.
- **Sharing:** the conclusions of the review activities are submitted to the Academic Bodies and the University Evaluation Board.

Quality Manager

Vice Rector for Teaching and Education

Academic Bodies

-
- **Improvement:** on the basis of the results of the internal audit, the Schools and Study Programmes plan improvement activities, to ensure that the Study Programmes increasingly respond to the needs of society. The cycle then starts over again, with the definition of actions to be implemented, the results of which are in turn verified, in a continuous path that guarantees the quality of education.

F. GLOSSARY TERMS

Additional Learning Requirements

Students enrolling in the first year of a first cycle or single cycle degree and who, following the results of the entrance exams established for each study programme, do not possess the knowledge required for access to the programme, are assigned additional learning requirements (OFA).

The OFA are fulfilled by passing an assessment test defined by the programme.

The non-fulfilment of the requirements by the date set by the Academic Bodies and published on the University Portal will lead to the re-enrolment in the first year of the programme.

AlmaLaurea

AlmaLaurea is an innovative in-line database service of graduates' curriculum vitae (1,620,000 CVs, from 53 Italian universities as of 05/07/2012), which offers a link between graduates, universities and businesses.

Created in 1994 on the initiative of the Statistical Observatory of the University of Bologna, managed by a consortium of Italian universities with the support of the Ministry of Education, University and Research, the purpose AlmaLaurea is to act as a point of contact between businesses and graduates, a reference within universities for anyone (students, businesses, etc...) working in the field of university studies, employment and the condition of young people at different levels.

Average of similar study programmes (belonging to the same group)

Average of the Study Programmes (which belong to the subject group)

Calculated average which refers to all study programmes of the same cycle which belong to the subject group.

There are four groups, composed as follows:

- **BIOMEDICAL** group: Study Programmes of the Schools of Pharmacy, Biotechnology and Sport Science; Medicine; Agriculture and Veterinary Medicine
- **SCIENTIFIC-TECHNOLOGICAL** group: Study Programmes of the Schools of Engineering and Architecture; Sciences
- **SOCIAL SCIENCES** group: Study Programmes of the Schools of Economics, Management, and Statistics; Law, Political Sciences
- **HUMANITIES** group: Study Programmes of the Schools of Arts, Humanities, and Cultural Heritage; Foreign Languages and Literatures, Interpreting and Translation; Psychology and Education

CFU University Learning Credits

University Learning Credits (CFU) were introduced under Italian Ministerial Decree no. 509/99 to comply with European legislation, and are a measurement of the volume of learning, including individual study, required of students; generally 1 CFU corresponds to 25 hours of a student's "overall learning effort".

Class

Degree classes group together study programmes of the same level and with the same key learning outcomes and available learning activities for a given number of credits and in sectors which are identified as indispensable. The features of the classes are set nationally, by Ministerial Decree, and are therefore common to all universities.

Cohort

Cohort refers to a group of students enrolled in the same academic year.

Enrolment status

In terms of enrolment, students may be:

- **Regularly enrolled:** students enrolled for as many or fewer years than the legal duration of the study programme, who do not fall into any of the following categories;
- **Not aligned with the exam schedule:** students who, without having graduated, have enrolled in all the years of the study programme and which, for programmes with compulsory attendance, have obtained all attendance certificates;
- **Repeating:** students re-enrolling in the same year of a programme again. Starting from academic year 2009-2010, students who have not fulfilled the assigned additional learning requirements within the deadline have to enrol in the 1st year as repeating students.

Entrance exam

Enrolment in a study programme may be free access or restricted access.

For all programmes with restricted access, candidates are required to sit an entrance exam and there are a limited number of places available. The entrance exam is a test which is used to draw up a graded list of candidates; students may enrol in the programme according to their place in the list. The methods of managing the call for applications and the list of candidates, including the methods for filling any unclaimed places, may vary from year to year. The test may be specific to a Degree Programme or may be part of a single exam covering several programmes from the same university or from other universities (during the registration the students should indicate their first choice).

The following definitions apply:

Available places = the number of places laid down in the call for applications to the Study Programme, or determined by subsequent legal provisions; these exclude any additional places reserved according to special provisions of the programme (e.g. for international study programmes, they do not include places for foreign students selected from other universities; for all programmes with restricted access regulated nationally, these do not include the places reserved for transferring students).

Number of candidates for the exam = number of students registered for the exam indicating the study programme as their first choice;

Number of participants in the exam = number of students participating in the exam indicating the study programme as their first choice;

Number of participants in the exam for every available place = number of students participating in the exam who indicated the study programme as their first choice as a ratio of the number of places available on the programme.

First year enrolments

This includes all students enrolled in the first year, including those joining the study programme in its first year through transferrals, as well as those enrolled in the first year but not for the first time (e.g. repeating students).

New Careers

Students who start a new university career (excluding transfers) from year one in a second cycle programme.

Passages and transfers

Passage: when a student applies to move to a different study programme from the one enrolled in the previous year, within the same university.

Transfer: when a student transfers from a study programme in one university to any programme in another university.

Registered students

Students who begin a career in the Italian University System for the first time and who enrol in the first year (i.e. for whom no previous university careers are recorded) of a First Cycle (L509, L) or Single Cycle programme (LSCU, LMCU)

Statistical Observatory of the University of Bologna

The Statistical Observatory was founded in 1997 in order to “provide the university governing bodies with a reliable and timely documentary and monitoring database aiming to promote decision-making processes and planning, particularly of learning activities and other services targeting the student population” (art.1 of the Founding and Operational Regulation). Following the disabling of the Statistical Observatory, as resolved by the Board of Governors on 14 December 2010, from the second semester of academic year 2010-11 the survey and subsequently analysis of the attending students opinion is cared for the University of Bologna by Academic Affairs Division - Quality Assurance Department and Control and Finance Division - Support Planning and Evaluation Department. The overall results and the methods of collection and analysis are described in the document published online on the [Statistical Observatory of the University of Bologna](#).

University DataWarehouse

Information service for the managers of the University of Bologna organisational departments which gathers, integrates and reorganises data from various sources and makes it available for analysis and evaluation for the purposes of planning and decision-making.

Withdrawal

Suspension of studies by students who do not register in the next academic year, or who drop out from the degree programme.