

2013



ALMA MATER STUDIORUM  
UNIVERSITÀ DI BOLOGNA



School of Foreign Languages and Literatures, Interpreting and Translation

LAUREA (FIRST CYCLE DEGREE/  
BACHELOR - 180 ECTS) IN FOREIGN  
LANGUAGES AND LITERATURE

A.Y. 2013/2014

Programme Director Prof. Gabriella Elina Imposti

REPORT

Study Programme Report  
FOREIGN LANGUAGES AND LITERATURE  
Programme ex D.M. 270/04 - Code 0979 - Class L-11  
School of Foreign Languages and Literatures, Interpreting and Translation  
Programme Director Prof. Gabriella Elina Imposti

Created in collaboration with Teaching and Learning Administrative Area (AFORM – Area della Formazione) – Quality Assurance Unit

Edited by AAGG – University Web Portal Division and CeSLA – Web Technology Division, with MultiPublishing technology

Release date: July 2013

Academic year of reference: 2013/2014

[www.unibo.it/QualityAssuranceEn](http://www.unibo.it/QualityAssuranceEn)

# INDICE

<b>What is the Study Programme Report?</b> .....	1
<b>A. Presentation and prospects</b> .....	2
A.1. Presentation .....	2
A.2. Admission requirements .....	2
A.3. Learning outcomes .....	3
A.4. Career opportunities .....	4
A.5. Opinion of social partners and potential employers .....	5
A.6. Further studies .....	5
<b>B. Teaching and Learning</b> .....	6
B.1. Course Structure Diagram .....	6
B.2. Calendar and lecture timetable .....	6
<b>C. Resources and services</b> .....	7
C.1. Teachers .....	7
C.2. Student services: offices .....	7
C.2.1. Future students .....	7
C.2.2. Enrolled students .....	8
C.2.3. International students .....	8
C.2.4. Graduates .....	8
<b>D. The Study Programme in figures</b> .....	9
D.1. Students starting their university careers .....	9
D.1.1. Enrolments and registrations .....	9
D.1.2. Additional data on students' starting their university careers .....	10
D.1.2.1. Candidates registered for the entrance exam .....	10
D.1.2.2. Incoming students .....	11
D.1.2.3. Additional Learning Requirements .....	12
D.2. Regularity of studies .....	13
D.2.1. Students leaving the Programme between years 1 and 2 .....	13
D.2.2. Regular graduates .....	14
D.2.3. Additional data on regularity of studies .....	15
D.2.3.1. Credits obtained by students in the 1st year .....	15
D.2.3.2. Exams passed and average grade .....	16
D.3. Opinions of graduates and attending students .....	20
D.3.1. Opinion of graduates .....	20
D.3.2. Additional data on opinions of students .....	21
D.3.2.1. Opinion of attending students .....	21
D.4. Entry into the world of work .....	22
D.4.1. Employment situation .....	22
D.5. Information on pre-reform programmes (DM 509/99) .....	23
D.5.1. Students starting their university careers .....	23
D.5.1.1. Enrolments and registrations .....	23
D.5.1.2. Additional data on students' starting their university careers .....	23
D.5.1.2.1. Candidates registered for the entrance exam .....	23
D.5.1.2.2. Incoming students .....	23
D.5.2. Regularity of studies .....	23
D.5.2.1. Students leaving the Programme between years 1 and 2 .....	23
D.5.2.2. Regular graduates .....	24
D.5.2.3. Additional data on regularity of studies .....	24
D.5.2.3.1. Credits obtained by students in the 1st year .....	24
D.5.2.3.2. Exams passed and average grade .....	24

D.5.3. Opinions of attending students and graduates .....	25
D.5.3.1. Opinion of graduates .....	25
D.5.3.2 Additional data on opinions of students .....	25
D.5.3.2.1. Opinion of attending students .....	26
D.5.4. Entry into the world of work .....	26
D.5.4.1. Employment situation .....	26
<b>E. Find out more: the quality of your Study Programme .....</b>	<b>28</b>
<b>F. Glossary terms .....</b>	<b>31</b>

## WHAT IS THE STUDY PROGRAMME REPORT?

### What is the Study Programme Report?

The Study Programme Report provides updated information which is important for the purposes of Quality Assurance and is published annually by the University of Bologna.

The main aspects of the teaching programme are described in detail, with a view to assuring the principle of transparency and promoting self-assessment and continuous improvement processes.

The document provides a concrete overview of the features and results of the Study Programme for students, families, employers and so on.

For example, regarding the current issue of employment, it describes the learning outcomes and career opportunities; it also includes statistics on the percentage of employed graduates (D.4. Employment situation).

The document is organised into five sections and a glossary:

### A. Presentation and prospects

Key information on the Study Programme, including the expected learning outcomes, career opportunities and further studies.

### B. Teaching and Learning

The updated course structure diagram with the full titles and listings of the course units and the latest published lecture timetable.

### C. Resources and services

The list of teaching staff and their relative curricula, the offices (secretariats), services (work placements) and infrastructures (libraries, laboratories) available to students.

### D. The Study Programme in Figures

Key data shows how many students are enrolled, how many have been assigned additional learning requirements, how many drop out after the first year, how many graduate in line with the programme schedule, the opinions of attending and graduating students on the teaching programmes and information concerning graduate employment.

### E. Find out more: the quality of your Study Programme

How the quality system applied to your Study Programme works. The quality system of your Study Programme is a set of processes and responsibilities adopted to guarantee the quality of all Study Programmes at the University of Bologna.

### NOTES:

- Reports are available for all Study Programmes for which it is possible to enrol in the first year in academic year 2012/2013: the information and data provided is as updated as possible.
- Sections A, B and C provide data for the academic year 2012/2013.
- Section D presents data regarding the Study Programmes in the last three academic years.
- The information and data were taken from the University databases and the reports published by the [Statistical Observatory of the University of Bologna](#) and [AlmaLaurea](#), and are updated to **15 June 2012**.

## A. PRESENTATION AND PROSPECTS

*This section presents the key information concerning the Study Programme, including the expected learning outcomes, career opportunities and further studies, updated to the academic year 2013/2014.*

### A.1. PRESENTATION

*This paragraph provides information on the specific learning outcomes of the Study Programme and the curriculum.*

The aim of the Foreign Languages and Literatures degree programme is to provide graduates with good language proficiency and a good knowledge of the historical and cultural background of the countries of the languages studied.

These areas of expertise are inherent to professional roles in service and communication sectors, as well as those of interculturalism and internationalisation. In this sense, the course units in this degree programme, aim to provide students with specific training regarding the analysis of both formal features and use of foreign languages.

Graduates will improve and strengthen their knowledge in languages and cultures, which is relevant to professional careers in the fields of commercial relations, cultural tourism and socio-cultural and educational institutions.

Additional skills in these sectors may be required for roles which entail a greater degree of autonomy and responsibility: these can be acquired through internships, post-graduate vocational courses or post-graduate 1st level Master's Degree, that graduates of this Degree Programme can undertake thanks to the methodological and learning abilities developed.

### A.2. ADMISSION REQUIREMENTS

*This paragraph provides information on the knowledge required for admission to the Study Programme.*

For admission to the First Cycle Degree Programme, you must have **one** of the following qualifications:

- five-year high school diploma
- four-year high school diploma with supplementary year
- degree
- other foreign qualifications recognized as suitable for access to university studies and equivalent to one of the aforementioned titles.

This first cycle degree programme is subject to restricted access, meaning that any student has to take the entrance exam, whose structure and conditions will be released every year through a public announcement of selection.

For the academic year 2013/14, this Degree Course Council has set 450 enrolment positions for Italian citizens, EU citizens and Non-EU citizens with equivalent citizenship; 8 positions for Non-EU citizens resident abroad and 2 positions for Chinese citizens who participate in the Marco Polo Project.

It is also necessary to possess basic knowledge and skills, as stated in the didactic regulations of the course. These will be assessed through an entrance examination, for which every year a minimum score is determined by Faculty members and released in a public announcement of selection.

For the academic year 2013/14, students who will get a score lower than 23/45 in the section of the test concerning grammatical competence in the Italian language, will have to fulfil the Additional Learning Requirements ("OFA") set for the first year of enrolment: these students will have to attend a specific course on Italian language structures and take its final test.

Students who will pass this examination will be deemed to have fulfilled the Additional Learning Requirements ("OFA"). On the other hand, students who will not pass this written exam, will have the possibility to take it again, up until July of the first year of enrolment. However, if they will not have passed the examination within the summer session, they will be required to repeat the year.

Following the dispositions provided for by the Degree Course Council, students who

- have suspended/interrupted or have withdrawn from studies
- lost the student status
- transferred to a degree programme running under the reformed system
- possess an academic title
- have obtained credits from course units/activities attended abroad
- have changed the Degree programme within the University of Bologna
- have transferred from another University

**will have to take the entrance test.**

The only students exempted from taking the entrance test are those who enrolled from the year 2011/12 to the Degree Programme in Asian languages, markets and cultures and request a Course transfer to the Degree Programme in foreign languages and Literatures.

### A.3. LEARNING OUTCOMES

*This paragraph provides information on the knowledge and skills students will have acquired by the end of the Programme.*

#### KNOWLEDGE AND UNDERSTANDING ABILITY:

Graduates:

- will have specific philological and linguistic-theoretical knowledge (including language structures in oral and written communication and theoretical grammar foundations) necessary for in-depth study of foreign languages and their usage;
- will acquire proficiency in both reading and writing of two or three foreign languages: at least two foreign European languages at C1 level and one Oriental language at an advanced level;
- will have general knowledge of the Italian culture, history, literature as well as the literature of the languages studied;
- will acquire knowledge of the historical, geographical and cultural contexts of the foreign languages studied;

These abilities are achieved through attendance and active participation to lectures/seminars, as well as through individual study, which is required for both obligatory course units (Italian literature, Linguistics), core course units (European languages and literatures, theoretical linguistics related to cultural contexts) and other course units (focusing on history, geography and culture) that allow for a socio-historical contextualization of knowledge.

Foreign languages are learned particularly during exercises carried out in specific language laboratory activities at different levels.

Written and/or oral exams will be used as outcome measures.

#### APPLYING KNOWLEDGE AND UNDERSTANDING:

Graduates:

- will be able to analyse the structure of a literary text and to translate literary texts from the languages studied;
- will be able to apply literary text analysis methodologies in order to understand the structure of non-literary texts and documents and develop editorial skills;
- will be able to apply historical-cultural knowledge to professional contexts, including the fields of business, tourism, culture and social-welfare/assistance;
- are able to use the most common office automation programmes (word, excel, access, e-mail);
- work autonomously and in groups, with specific skills in terms of organisational flexibility.

The ability to apply linguistic and literary knowledge and understanding is achieved through the study of foreign languages, their formal features and their usage; through the critical analysis of texts and documents examined during classroom activities, which are proposed for individual study and useful as an introduction to bibliographical research; through practical tasks and laboratory activities.

The linguistic and methodological skills acquired are further developed in practical activities including the internship and the preparation for the final examination.

Computing skills are developed in specific learning activities.

The tests, written and oral exams, reports and the production of written assignments aim to assess the students' command of analysis methods, their analytical skills, the ability to produce summaries and use different methodologies with organisational autonomy.

During their internship, students will be assessed through a report presented by the students and the company tutor, which is submitted for approval by the school bodies.

#### MAKING JUDGEMENTS

Graduates:

- will be able to study socio-cultural events related to the historical, geographical and cultural contexts of the languages studied, also through an intercultural perspective;
- will be able to problem solve and make decisions by organising and planning their activity with independent judgement, initiative and entrepreneurial spirit.

The acquisition of the above listed abilities is guaranteed by course units in which high importance is given to changes in socio-linguistic /cultural contexts, as well as on the role of languages in intercultural relations.

During internships, students are faced with specific operational contexts in which they have to apply their own judgement skills.

Assessment is accomplished through oral and/or written exams; the level of autonomy as well as the ability to work as part of a group is assessed by checking the results obtained during the internship.

Students who choose not to carry out an internship can show their judgement skills during group work carried out in preparation of the final paper, but also during the organisation and development of the final paper.

#### COMMUNICATION SKILLS:

Graduates:

- will be able to communicate in heterogeneous and multicultural contexts adopting different communication registers;
- will be able to communicate information and ideas within their areas of expertise, adopting different forms of communication according to the interlocutors;
- will have excellent written and oral communication skills in their mother tongue as well as in the foreign languages studied.

The above listed communication skills are not only acquired through specific language courses, but also other course units provide students with these skills, through activities in direct contact with multilingual and multicultural contexts and through the preparation of the final paper.

The above- discussed abilities are assessed through examinations that include text analysis, essays and oral presentation of written papers.

#### LEARNING SKILLS

Graduates:

- will know how to improve their written and oral language proficiency, also in terms of lexical knowledge, related to specific professional contexts;
- will be able to apply the learning methods acquired to update and further research the topics studied, also in professional terms, and to undertake further studies;
- will be able to learn and apply the knowledge acquired through analytical ability and with conciseness.

The learning abilities acquired are a result of the three- year course of studies, with particular stress on individual study, in the preparation of individual projects, their correction and rewriting, and in the acquisition of the essential instruments for bibliographic research and lexical study of languages.

Learning skills are assessed during the course units.

The assessment takes into account the students' ability to organise their study time and to meet deadlines.

All learning skills are also developed during the preparation of the final paper and are thus further assessed.

## A.4. CAREER OPPORTUNITIES

*This paragraph provides information on the occupational profile, functions and fields of employment available to graduates of this Programme.*

Graduates will be able to perform the following professional roles and functions in the employment sectors listed below:

#### LINGUISTICS CONSULTANT IN THE COMMERCIAL SECTOR

Main functions:

- Import-export commercial and administrative activities operating under the supervision of sector managers or working alongside sector specialists;
- Management of foreign language promotional and communication activities in corporate marketing offices.

Career opportunities:

- Administration-organisation sectors and public relations sectors in public and private companies carrying out activities that require language and organisational skills, as well as the ability to analyse and produce documentation in foreign languages;
- Import-export offices, sales offices, company export offices, companies specialised in the organisation of national and international trade fairs.

#### LINGUISTICS CONSULTANT IN CULTURAL TOURISM

Main functions:

- Planning, organisation and administration of meetings, international congresses and exhibitions, cultural and tourism events and projects;
- Research and preparation of information material in foreign languages or translation into Italian of documentation in foreign languages (for editorial projects, catalogues and brochures);
- Management of activities for the international promotion of the local territory;
- Operating as a guide and/or as itinerary planner, organising cultural events as part of the tourism activity of public bodies or private companies.

Career opportunities:

- Organisational and public relations offices in tourism companies and/or publishing companies carrying out activities that require language and organisational skills, as well as the ability to analyse and produce cultural and informative material.

#### SOCIO-CULTURAL LINGUISTIC MEDIATOR

Main functions:

- Offers support for communication and relations in institutional, socio-educational, cultural, legal and economic activities by providing linguistic skills;
- Production of information materials on local services in a foreign language for foreign citizens;
- Supports teaching of Italian as a second language (L2);
- Management of intercultural education projects;
- Organising and coordinating cultural exchanges as part of initiatives promoted by public administrations, institutions and other bodies (national and international).

Career opportunities:

- Public and private bodies which deliver services mainly and/or partially to foreigners: local authorities (municipalities, provinces, regions), local healthcare boards, non-profit organisations, banks and insurance companies.



The degree programme project has been submitted to selected external stakeholders in order to receive their opinions and feedbacks on the learning outcomes and the professional profiles.

## A.5. OPINION OF SOCIAL PARTNERS AND POTENTIAL EMPLOYERS

*This paragraph describes the outcome of the consultation with the representative employment and trade organisations.*

This information is not available in English at this time.

## A.6. FURTHER STUDIES

It gives access to second cycle studies (Laurea Magistrale) and and 1st level professional Master.

## B. TEACHING AND LEARNING

*This section describes the updated course structure diagram (for academic year 2013/2014), with the full titles and listings of the course units and the latest published lecture timetable.*

### B.1. COURSE STRUCTURE DIAGRAM

*The link takes you to the Study Programme course structure diagrams. You can also access to each course unit content.*

- [Study plan: all course units in the programme](#)

### B.2. CALENDAR AND LECTURE TIMETABLE

*The links take you to the teaching calendar (exam session and final examination session) and the lecture timetable (in Italian).*

- [Lecture timetable](#)
- [Exam sessions](#)
- [Final examination sessions](#)

## C. RESOURCES AND SERVICES

*This section provides a list of teaching staff and their relative curricula and and description of the services available to students for the academic year 2013/2014.*

### C.1. TEACHERS

*The paragraph lists the lecturers who teach in the Study Programme: from here you can access the personal web pages of each one. Information updated to 28 May 2013 (in Italian).*

#### Permanent teaching staff:

Alberti, Alberto	Contadini, Luigi	Maggi, Eugenio	Pistoso, Maurizio Silvio
Ascari, Maurizio	Corradi, Carla	Magni, Elisabetta	Prandoni, Marco
Avellini, Luisa	Crisafulli, Lilla Maria	Manfredi, Marina	Presotto, Marco
Baffetti, Giovanni	Dondi, Mirco	Marchetti, Giovanni Gentile	Pugliese, Rosa
Baiesi, Serena	Elam, Keir Douglas	Masini, Francesca	Quaquarelli, Leonardo
Benati, Daniele	Ermilli, Marilena	Meneghelli, Donata	Rieger, Maria Antoinette
Benozzo, Francesco	Facchini, Claudia	Michelacci, Lara	Rodrigo Mora, Maria José
Benvenuti, Giuliana	Filippi, Paola Maria	Miller, Donna Rose	Saccone, Carlo
Bertoni, Federico	Fusari, Sabrina	Minganti, Franco	Sberlati, Francesco
Betti, Silvia	Gallingani, Daniela	Monti, Aldino	Scatasta, Gino
Bisetto, Antonietta	Garuti Simone, Giulio	Mulinacci, Roberto	Scrolavezza, Paola
Bolognesi, Ivana	Ghirardi, Maria Angela	Nannoni, Catia	Tamburini, Fabio
Bragaglia, Cristina	Gnocchi, Maria Chiara	Niero, Alessandro	Tarozzi, Fiorenza
Cantarutti, Giulia	Imposti, Gabriella Elina	Olmi, Giuseppe	Thune, Eva- Maria Christina Charlotte
Caraffi, Patrizia	Ivancic, Barbara	Pano Alaman, Ana	Turci, Monica
Ceccagno, Antonella	Lamberti, Elena	Perotto, Monica	Vecchi, Roberto
Ceccherelli, Andrea	Leonardi, Paolo	Pezzarossa, Fulvio	Zironi, Alessandro
Conconi, Bruna	Lollini, Fabrizio	Pirillo, Paolo	Zotti, Valeria

#### Contract teaching staff:

Alfaro Vergarachea, Inaki	Pirazzoli, Melinda
Baccini, Giulia	Pistocchi, Filippo
Benenati, Giovanni Domenico	Rozsnyoi, Zsuzsanna
Berardi, Simona	Tortosa Corbi, Noemi
Bernardini, Giovanni	Vitucci, Francesco
Borghetti, Claudia	Zhai, Ran
Canalis, Stefano Celestino	
Canella, Federico	
Cavaliere, Silvia	
Cervini, Cristiana	
Fedriani, Chiara	
Gardellini, Giuliana	
Jakobsze, Malgorzata	
Landeros De Casolari, Leopoldina	
Mardani, Faezeh	
Martin, Sanna Maria	
Modena, Silvia	
Moen, Randi Langen	

### C.2. STUDENT SERVICES: OFFICES

#### C.2.1. FUTURE STUDENTS

*The link take you to the webpage which provides specific information about the offices and the services for the future students (in Italian).*

- [Future students](#)

### **C.2.2. ENROLLED STUDENTS**

*The link take you to the webpage with the information on the offices and the services for the enrolled students (in Italian).*

- [Enrolled students](#)

### **C.2.3. INTERNATIONAL STUDENTS**

*The link take you to the webpage with the information on the offices and the services for the international students (in Italian).*

- [International students](#)

### **C.2.4. GRADUATES**

*The link take you to the webpage with the information on the offices and the services for the graduates (in Italian).*

- [Graduates](#)

## D. THE STUDY PROGRAMME IN FIGURES

Information on students' starting their university careers, how many students are in line with the regular programme, opinions of students and graduates on the teaching programmes and information concerning graduate employment.

This section provides the data of the last academic years for the Study Programme (SP) and a comparison with similar Study Programmes. The University of Bologna has divided its Study Programmes into four groups:

- **BIOMEDICAL** group: Study Programmes of the Schools of Pharmacy, Biotechnology and Sport Science; Medicine; Agriculture and Veterinary Medicine
- **SCIENTIFIC-TECHNOLOGICAL** group: Study Programmes of the Schools of Engineering and Architecture; Sciences
- **SOCIAL SCIENCES** group: Study Programmes of the Schools of Economics, Management, and Statistics; Law, Political Sciences
- **HUMANITIES** group: Study Programmes of the Schools of Arts, Humanities, and Cultural Heritage; Foreign Languages and Literatures, Interpreting and Translation; Psychology and Education

The section presents the results of the Study Programme for the last three academic years.

Main data shows how many students enrolled, the number of students assigned OEA, how many drop out after the first year, how many graduate in line with the programme schedule, the opinions of attending and graduating students on the teaching programmes and information concerning graduate employment.

The information and data presented in this section, updated to 28 May 2013, were taken from University databases and *AlmaLaurea*.

Study Programmes may be subject to degree programme system modifications from one academic year to the next, and the data provided in this section may refer to a programme with a slightly different system to the one currently running (such as programme title, course structure diagram and list of lecturers). However, indicatively the data presents the general trend of the Study Programme over the past three years.

Most of the Study Programmes running at the University of Bologna have been reformed in compliance with DM 270/04, most of them from the academic year 2008/2009. In the reports provided for these Programmes, paragraph D.5. refers to the Study Programmes as they were presented prior to the reform.

### D.1. STUDENTS STARTING THEIR UNIVERSITY CAREERS

Characteristics of incoming students at the beginning of their university careers. Tables and graphs provide information on the number of registered students, focusing on the characteristics of the students, results of any entrance tests and the students assigned any additional learning requirements.

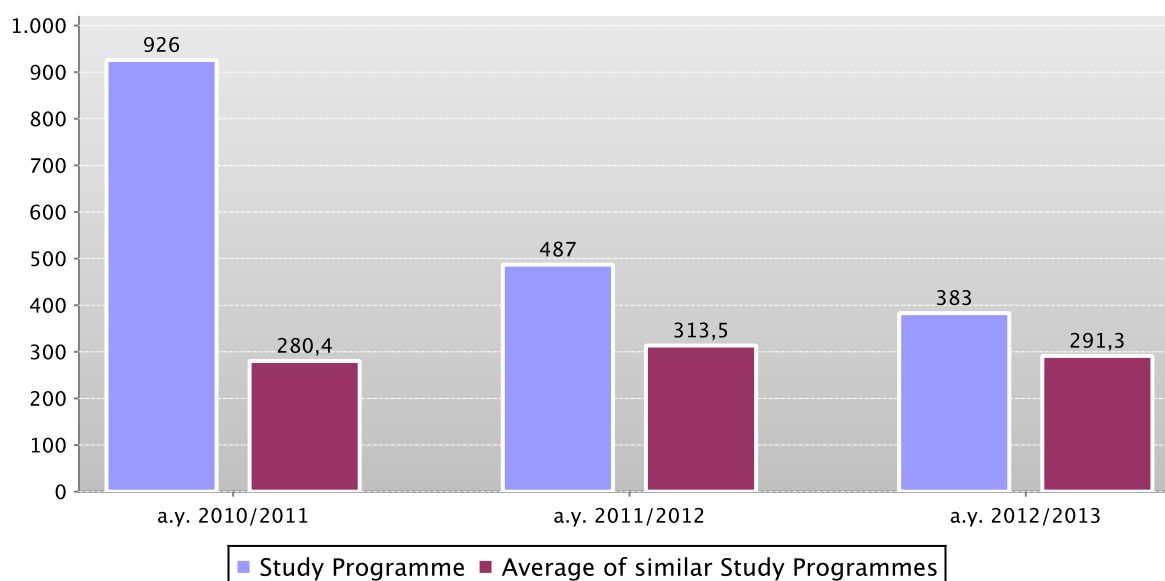
#### D.1.1. ENROLMENTS AND REGISTRATIONS

The **graph** shows the number of students enrolled in the 1st year compared with the average of similar Study Programmes (which belong to the same group).

In addition, the **table** shows the total number of registered students and the total number of enrolled students.

Data of the Study Programme is compared with the average of the Study Programmes of average of similar Study Programmes (which belong to the same group) for the indicated academic years.

First year enrolments



	a.y. 2010/2011			a.y. 2011/2012			a.y. 2012/2013		
	Registered students	N. first year enrolments	Total N. enrolled students	Registered students	N. first year enrolments	Total N. enrolled students	Registered students	N. first year enrolments	Total N. enrolled students
Study Programme	788	926	2012	412	487	1965	326	383	1808
Average of similar Study Programmes	231,5	280,4	380,7	263,1	313,5	373,9	247,4	291,3	358,7

## D.1.2. ADDITIONAL DATA ON STUDENTS' STARTING THEIR UNIVERSITY CAREERS

### D.1.2.1. CANDIDATES REGISTERED FOR THE ENTRANCE EXAM

The number of students sitting the [entrance exam](#) for the Study Programme. Concerns the programmes with restricted access. The methods of managing the call for applications and the list of candidates, including the methods for filling any unclaimed places, may vary from year to year.

The **table** shows the number of places available for the study programme, the number of candidates enrolling for the exam, the number sitting the exam and the percentage of students sitting the exam compared to the number of places available.

For all programmes with restricted access, candidates are required to sit an entrance exam and there are a limited number of places available. The entrance exam is a test which is used to draw up a graded list of candidates; students may enrol in the programme according to their place in the list. The methods of managing the call for applications and the list of candidates, including the methods for filling any unclaimed places, may vary from year to year. The test may be specific to a Degree Programme or may be part of a single exam covering several programmes from the same university or from other universities (during the registration the students should indicate their first choice).

The following definitions apply:

**Available places** = the number of places laid down in the call for applications to the Study Programme, or determined by subsequent legal provisions; these exclude any additional places reserved according to special provisions of the programme (e.g. for international study programmes, they do not include places for foreign students selected from other universities; for all programmes with restricted access regulated nationally, these do not include the places reserved for transferring students).

**Number of candidates for the exam** = number of students registered for the exam indicating the study programme as their first choice;

**Number of participants in the exam** = number of students participating in the exam indicating the study programme as their first choice;

**Number of participants in the exam for every available place** = number of students participating in the exam who indicated the study programme as their first choice as a ratio of the number of places available on the programme.

	Number of places available (a)	Candidates registered for the exam	Candidates sitting the exam (b)	Number of candidates sitting the exam per place available (b/a)
a.y. 2011/2012	560	785	738	1,3
a.y. 2012/2013	460	956	890	1,9

**D.1.2.2. INCOMING STUDENTS**

Geographic origin, type of high school certificate, age and gender of students.

Data shows a homogeneous group of students (**cohort**) which started together their academic career. Students which have **passed** to an other Study Programme, **transferred** from an other university, or registered to a 2nd degree are not included.

The **tables** show the number, geographic origin, gender, age, type and grade of high school certificate of students enrolling in the degree programme.

Data of the Study Programme is compared with the average of the Study Programmes of **average of similar Study Programmes** (which belong to the same group) for the indicated academic years.

		Registered students	Geographic origin					Gender		Average age of registered students		
			Students coming from the province of the Study Programme site	Students coming from other provinces where Unibo has a site	Students coming from other provinces of Emilia Romagna region	Students coming from other Italian regions	Students coming from abroad	M	F	19 or less	20 - 24	25 or more
Students 2010/2011	Study Programme	788	18,3%	13,8%	22,2%	42,0%	3,7%	21,8%	78,2%	63,8%	31,3%	4,8%
	Average of similar Study Programmes	231,5	21,9%	16,3%	16,3%	42,9%	2,6%	27,6%	72,4%	60,8%	31,4%	7,8%
Students 2011/2012	Study Programme	412	18,9%	14,3%	23,3%	41,7%	1,7%	21,1%	78,9%	71,6%	26,2%	2,2%
	Average of similar Study Programmes	263,1	20,5%	16,6%	15,4%	45,0%	2,5%	29,5%	70,5%	61,4%	33,2%	5,4%
Students 2012/2013	Study Programme	326	21,8%	11,3%	31,6%	33,1%	2,1%	18,1%	81,9%	77,6%	20,9%	1,5%
	Average of similar Study Programmes	247,4	20,7%	15,4%	14,7%	45,9%	3,3%	29,1%	70,9%	61,3%	32,8%	5,8%

		High school certificate					Grade of High school			
		Vocational schools	Technical Colleges	High school specializing in education and in psycho-pedagogical science	High schools specializing in classical studies, modern languages, science education	Other Italian or foreign high schools	Grade ranging from 60 to 69	Grade ranging from 70 to 79	Grade ranging from 80 to 89	Grade ranging from 90 to 100
Students 2010/2011	Study Programme	6,9%	21,3%	4,7%	59,3%	7,9%	21,8%	29,8%	26,8%	21,3%
	Average of similar Study Programmes	9,5%	16,3%	8,5%	57,8%	8,0%	25,6%	31,1%	23,7%	19,1%
Students 2011/2012	Study Programme	3,4%	14,8%	4,9%	71,1%	5,8%	16,3%	26,7%	30,8%	24,8%
	Average of similar Study Programmes	8,9%	13,4%	14,7%	55,8%	7,1%	24,0%	32,8%	23,0%	19,4%
Students 2012/2013	Study Programme	1,5%	13,2%	4,0%	62,9%	18,4%	12,6%	19,3%	27,3%	25,8%
	Average of similar Study Programmes	8,2%	13,1%	14,4%	55,3%	8,9%	24,9%	28,5%	23,7%	18,1%

### D.1.2.3. ADDITIONAL LEARNING REQUIREMENTS

Students on the programme assigned **additional learning requirements** (OFA). OFA are learning requirements assigned to enrolled students who have not demonstrated the full possession of the entrance requirements. The assessment methods of students' initial preparation and the fulfilment of the OFA are described in the Study Programme Regulations, and may change each year. Students not completing the additional learning requirements are obliged to re-enrol in year 1 as repeating students.

The **table** shows the number of **registered students**, the number of students assigned OFA, the number who fulfilled them, the percentage of students assigned the OFA compared to the number of enrolled students and the percentage fulfilling the OFA compared to those assigned them.

	Registered students (a)	Students assigned OFA (b)	Students who fulfilled OFA (c)	% of students assigned OFA compared to the number of enrolled students (b/a)	% of students fulfilling the OFA compared to number of students assigned (c/b)
Students 2010/2011	788	66	23	8,4%	34,8%
Students 2011/2012	412	97	75	23,5%	77,3%
Students 2012/2013	326	51			

\*Note: At the time of publication of this report the number of students fulfilling the OFA can be measured for a.y. 2009/2010 and a.y. 2010/2011 only.



## D.2. REGULARITY OF STUDIES

*Insight into the regularity with which the students pass their exams.*

*Graphs and tables provide information on the number of students who leave the programme after the first year and the number of regular graduates, focusing on the number of credits obtained at the end of the first year, on the exams passed and average grade achieved for each course unit.*

### D.2.1. STUDENTS LEAVING THE PROGRAMME BETWEEN YEARS 1 AND 2

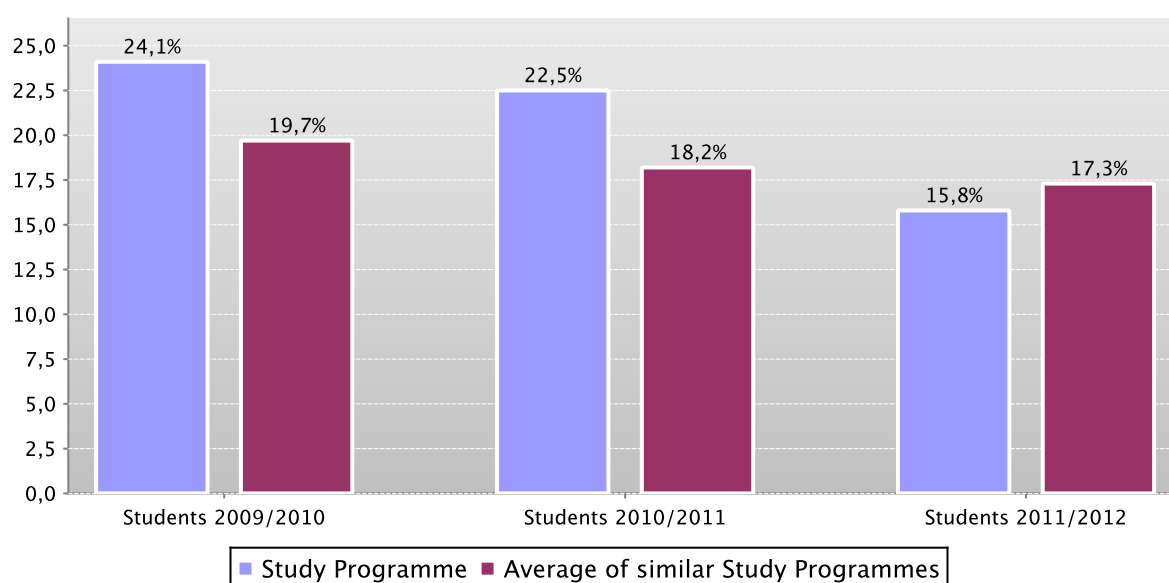
Here the number of students leaving the Study Programme is shown.

The **graph** shows the percentage of students who leave the programme after the first year compared to the average of similar Study Programmes (belonging to the same group).

The **table** shows the registered students, the percentage of students leaving the programme who pass to a different Study Programme in the same university, transfer to another university or withdraw from studies, as well as the enrolled repeating students and those enrolled in the second year.

The Study Programme data is compared with the average of similar Study Programmes of (which belong to the same group), for students registered in the indicated academic years.

Percentage of withdrawals between years 1 and 2



		Registered students	% withdrawals	% passages and transfers	% repeating students	Students enrolled in the second year
Students 2009/2010	Study Programme	646	24,1%	7,6%	0,9%	435
	Average of similar Study Programmes	189,8	19,7%	5,6%	0,4%	141,1
Students 2010/2011	Study Programme	788	22,5%	6,5%	2,5%	540
	Average of similar Study Programmes	231,5	18,2%	5,9%	1,4%	172,5
Students 2011/2012	Study Programme	412	15,8%	6,6%	0,7%	317
	Average of similar Study Programmes	263,1	17,3%	6,1%	0,5%	200,4

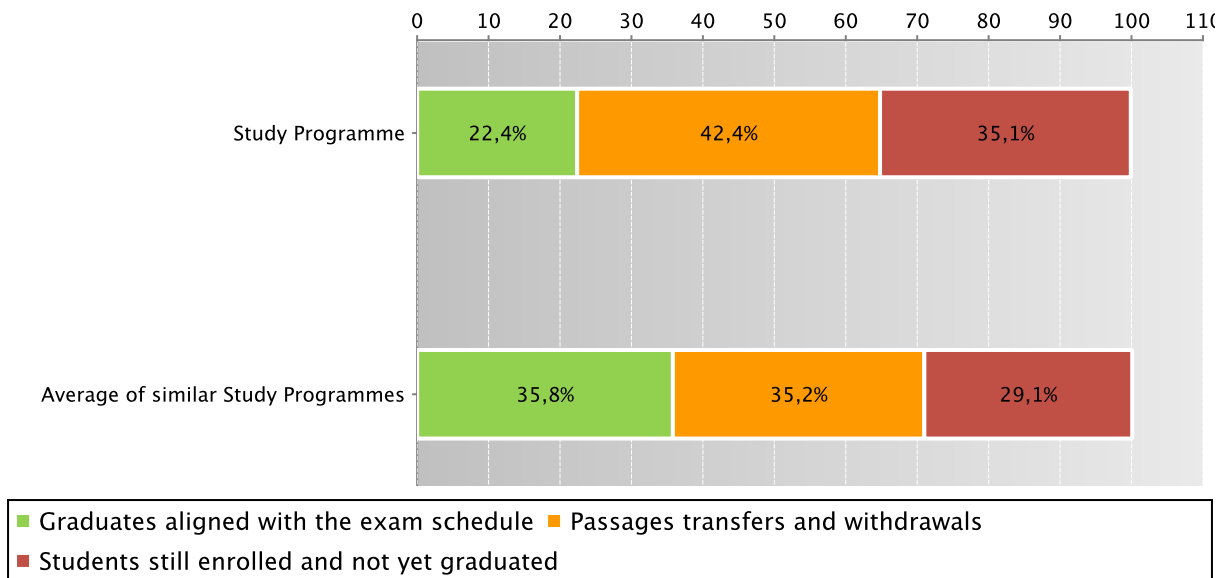
### D.2.2. REGULAR GRADUATES

Here you will find information on regular graduates, on how many students, at the end of the regular programme duration, left the programme and how many are still enrolled but **not aligned to the exam schedule**.

The **graph** and the **table** show the situation concerning **registered students** for the indicated academic year, at the end of the regular duration of the Study Programme, highlighting the percentage of regular graduates, the number of students still enrolled (**not aligned to the exam schedule** and **repeating students**), students who have left the programme (including **passages**, **transfers** and **withdrawals**).

The Study Programme data is compared with the average of **similar Study Programmes** (which belong to the same group) for students registered in the indicated academic years.

Situation of students 2009/2010 at the end of regular duration of the study programme



	Registered students	Regular graduates		Passages transfers and withdrawals		Students still enrolled and not yet graduated		
		N.	%	N.	%	N.	%	
Students 2008/2009	Study Programme	612	132	21,6%	247	40,4%	233	38,1%
	Average of similar Study Programmes	188,1	66,7	35,4%	63,1	33,5%	58,3	31,0%
Students 2009/2010	Study Programme	646	145	22,4%	274	42,4%	227	35,1%
	Average of similar Study Programmes	189,8	67,9	35,8%	66,7	35,2%	55,2	29,1%

See data of previous academic years – Study Programme D.M. 509/99 Foreign Languages and Literature (code 0078) [paragraph D.5.2.2.](#)

### D.2.3. ADDITIONAL DATA ON REGULARITY OF STUDIES

#### D.2.3.1. CREDITS OBTAINED BY STUDENTS IN THE 1ST YEAR

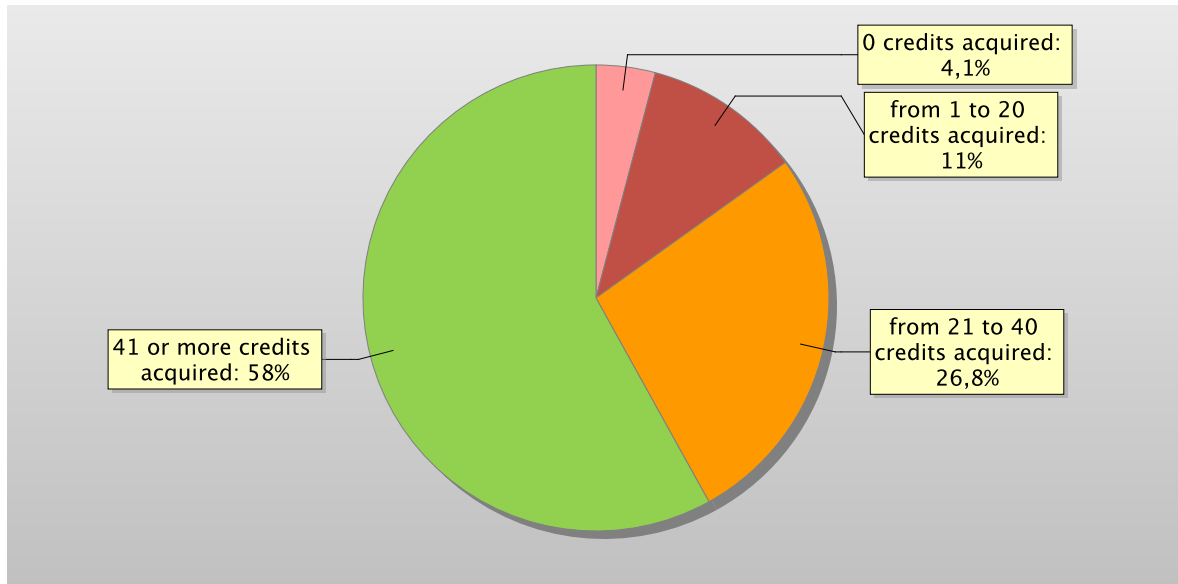
This offers an insight into how regularly students pass their exams.

The **graph** shows the distribution of the students according to the number of **credits** obtained at the end of the first year.

In addition, the **table** shows the number of students registered at the second year and average **credits** obtained during the first year.

The Study Programme data is compared with the average of **similar Study Programmes** (which belong to the same group) for the indicated academic years.

Distribution of the students in 2011/2012 according to the number of credits obtained at the end of the first year\*



		Students enrolled in the 2nd year	% students with *				Average credits per student
			0 credits acquired	from 1 to 20 credits acquired	from 21 to 40 credits acquired	41 or more credits acquired	
Students 2009/2010	Study Programme	435	3,7%	15,9%	37,0%	43,4%	37,4
	Average of similar Study Programmes	148,9	3,5%	11,2%	30,7%	54,6%	40,2
Students 2010/2011	Study Programme	540	5,7%	17,4%	34,3%	42,6%	35,6
	Average of similar Study Programmes	172,5	3,7%	9,8%	31,0%	55,6%	40,6
Students 2011/2012	Study Programme	317	4,1%	11,0%	26,8%	58,0%	42
	Average of similar Study Programmes	200,4	2,9%	8,7%	29,0%	59,4%	42

\*Note: by convention, credits are considered to be obtained by students by 31st October of the year following the year of enrolment.

## D.2.3.2. EXAMS PASSED AND AVERAGE GRADE

The **table** shows number of exams passed and average grade achieved for each course unit in the calendar year 2011. Marks for the exams passed are expressed out of thirty.

The data refers to the course unit code and therefore includes the various branches of the programme divided into channels or sub-groups, divided by letter.

It considers all subjects for which a grade is assigned, and therefore excludes all those to which a pass/fail score is allocated.

*Data of the Study Programme D.M. 270/04 Lingue e letteratura straniere (code 0979)*

	N. of exams passed	Average grade *
00045 ANTROPOLOGIA CULTURALE	10	27,1
00049 ARCHEOLOGIA E STORIA DELL'ARTE GRECA E ROMANA	1	
00221 DIRITTO COMMERCIALE	1	
00256 ECONOMIA POLITICA	12	24,1
00386 FILOSOFIA DEL LINGUAGGIO	15	26,1
00389 FILOSOFIA DELLA STORIA	54	29
00455 GEOGRAFIA	1	
00463 GEOGRAFIA POLITICA ED ECONOMICA	250	28,3
00567 LETTERATURA LATINA	3	
00745 ORGANIZZAZIONE AZIENDALE	27	26,7
00905 SOCIOLOGIA	9	27
00929 STORIA MODERNA	135	27,4
00932 STORIA CONTEMPORANEA	194	25,1
00951 STORIA DELL'ARTE CONTEMPORANEA	34	26,3
02290 STORIA DELL'ARTE MODERNA	2	
02609 LETTERATURA ITALIANA CONTEMPORANEA	36	28,7
02726 GEOGRAFIA DEL TURISMO	8	28,5
03634 STORIA E CRITICA DEL CINEMA	34	28,1
04177 SOCIOLOGIA DELLA LETTERATURA	45	28,1
05515 STORIA DELLE RELAZIONI INTERNAZIONALI	22	25,3
06490 GLOTTODIDATTICA	22	26,8
07564 SOCIOLOGIA DEL TURISMO	7	25,4
08790 LETTERATURA TEATRALE ITALIANA	4	
08846 LETTERATURE COMPARATE	42	28,2
09435 TEORIA DELLA LETTERATURA	77	28,3
11379 STORIA MEDIEVALE	142	26,2
11382 STORIA DELL'ARTE MEDIEVALE	1	
12512 ECONOMIA E GESTIONE DELLE IMPRESE	4	
12805 STORIA DELLA CULTURA INGLESE	87	27,8
15317 DIDATTICA DELLA LINGUA ITALIANA	56	27,3
30923 LINGUISTICA GENERALE 1	469	24,1
30931 LETTERATURA ITALIANA 1	447	26,5
30934 LINGUA E LINGUISTICA CATALANA 1	10	22,1
30946 LINGUA E LINGUISTICA FINLANDESE 1	11	28,4
30950 LINGUA E LINGUISTICA FRANCESE 1	82	22,6
30951 LINGUA E LINGUISTICA INGLESE 1	384	25

	N. of exams passed	Average grade *
30954 LINGUA E LINGUISTICA NEDERLANDESE 1	16	27,2
30956 LINGUA E LINGUISTICA NORVEGESE 1	3	
30959 LINGUA E LINGUISTICA POLACCA 1	10	29,5
30965 LINGUA E LINGUISTICA PORTOGHESE E BRASILIANA 1	56	26,7
30970 LINGUA E LINGUISTICA RUSSA 1	74	24,6
30972 LINGUA E LINGUISTICA SPAGNOLA 1	125	24,9
30976 LINGUA E LINGUISTICA TEDESCA 1	123	27,1
30980 LINGUA E LINGUISTICA UNGHERESE 1	5	
30988 LETTERATURA CATALANA 1	3	
30994 LETTERATURA FINLANDESE 1	13	29
31028 LETTERATURA FRANCESE 1	53	26,9
31031 LETTERATURA INGLESE 1	284	27,2
31035 LETTERATURA NEDERLANDESE 1	5	
31038 LETTERATURA POLACCA 1	3	
31041 LETTERATURA RUSSA 1	64	27,9
31043 LETTERATURA SPAGNOLA 1	101	25,3
31046 LETTERATURA TEDESCA 1	105	25,9
31048 LETTERATURA UNGHERESE 1	4	
31055 LETTERATURE ANGLO-AMERICANE 1	53	28,6
31059 LETTERATURE ISPANO-AMERICANE 1	31	28
31061 LETTERATURE PORTOGHESE E BRASILIANA 1	27	28,3
31065 LINGUA E LINGUISTICA ARABA 1	35	26,9
31068 LINGUA E LINGUISTICA CINESE 1	49	24,4
31070 LINGUA E LINGUISTICA GIAPPONESE 1	55	26,7
31082 LINGUA E LINGUISTICA PERSIANA 1	4	
31102 LETTERATURA ARABA 1	31	29,7
31103 LETTERATURA CINESE 1	49	22,8
31107 LETTERATURA GIAPPONESE 1	55	28,2
31113 LETTERATURA NORVEGESE 1	1	
31115 LETTERATURA PERSIANA 1	2	
31138 LINGUA E LINGUISTICA CATALANA 2	2	
31139 LETTERATURA CATALANA 2	1	
31141 LINGUA E LINGUISTICA FINLANDESE 2	13	28,8
31142 LETTERATURA FINLANDESE 2	16	28,8
31145 LETTERATURA FRANCESE 2	73	27,8
31146 LETTERATURA INGLESE 2	406	26,5
31147 LINGUA E LINGUISTICA FRANCESE 2	97	24,7
31149 LETTERATURA NEDERLANDESE 2	9	28
31150 LINGUA E LINGUISTICA INGLESE 2	344	23,9
31153 LETTERATURA NORVEGESE 2	11	29,3
31154 LETTERATURA POLACCA 2	1	
31155 LINGUA E LINGUISTICA NEDERLANDESE 2	8	27,9
31156 LETTERATURA RUSSA 2	43	27,3

	N. of exams passed	Average grade *
31159 LETTERATURA SPAGNOLA 2	87	27,5
31160 LINGUA E LINGUISTICA NORVEGESE 2	14	25,4
31163 LETTERATURA TEDESCA 2	74	27,1
31164 LINGUA E LINGUISTICA POLACCA 2	2	
31170 LETTERATURE ANGLO-AMERICANE 2	40	28,3
31171 LINGUA E LINGUISTICA PORTOGHESE E BRASILIANA 2	25	26,7
31174 LETTERATURE ISPANO-AMERICANE 2	25	28,8
31176 LINGUA E LINGUISTICA RUSSA 2	41	26,2
31178 LETTERATURE PORTOGHESE E BRASILIANA 2	24	28,2
31182 LINGUA E LINGUISTICA SPAGNOLA 2	116	26,7
31186 LETTERATURA ARABA 2	30	29,5
31187 LINGUA E LINGUISTICA TEDESCA 2	76	25,3
31191 LETTERATURA CINESE 2	42	27,5
31195 LETTERATURA GIAPPONESE 2	43	28,6
31199 LINGUA E LINGUISTICA ARABA 2	26	26,8
31201 LETTERATURA PERSIANA 2	1	
31206 LINGUA E LINGUISTICA CINESE 2	56	25,8
31211 LINGUA E LINGUISTICA GIAPPONESE 2	44	26,2
31215 FILOLOGIA ARABA 1	17	25,8
31217 FILOLOGIA CINESE 1	15	23,6
31219 FILOLOGIA GERMANICA 1	136	24,9
31220 FILOLOGIA GIAPPONESE 1	69	26,9
31221 LINGUA E LINGUISTICA PERSIANA 2	1	
31228 FILOLOGIA ROMANZA 1	108	28,3
31234 FILOLOGIA UGRO-FINNICA 1	16	28,1
31271 FILOLOGIA GERMANICA 2	1	
31284 LETTERATURA ITALIANA 2	1	
31296 LINGUA E LINGUISTICA CATALANA 3	4	
31298 LINGUA E LINGUISTICA FINLANDESE 3	6	28
31299 LINGUA E LINGUISTICA FRANCESE 3	68	25,1
31300 LINGUA E LINGUISTICA INGLESE 3	262	24,4
31301 LINGUA E LINGUISTICA NEDERLANDESE 3	3	
31302 LINGUA E LINGUISTICA NORVEGESE 3	5	
31303 LINGUA E LINGUISTICA POLACCA 3	10	30
31304 LINGUA E LINGUISTICA PORTOGHESE E BRASILIANA 3	15	27,4
31306 LINGUA E LINGUISTICA RUSSA 3	36	26,1
31307 LINGUA E LINGUISTICA SPAGNOLA 3	106	26,5
31308 LINGUA E LINGUISTICA TEDESCA 3	86	26,2
31309 LINGUA E LINGUISTICA UNGHERESE 3	1	
31311 LINGUA E LINGUISTICA ARABA 3	24	27,7
31312 LINGUA E LINGUISTICA CINESE 3	34	27,5
31313 LINGUA E LINGUISTICA GIAPPONESE 3	19	26,3
31318 LINGUA E LINGUISTICA PERSIANA 3	1	

	N. of exams passed	Average grade *
31328 LETTERATURA ARABA 3	9	30
31331 LETTERATURA CINESE 3	9	26,1
31332 LETTERATURA DEI PAESI DI LINGUA INGLESE 3	3	
31333 LETTERATURA FINLANDESE 3	3	
31334 LETTERATURA FRANCESE 3	34	27,5
31335 LETTERATURA GIAPPONESE 3	26	30
31340 LETTERATURA NORVEGESE 3	1	
31341 LETTERATURA PERSIANA 3	1	
31342 LETTERATURA POLACCA 3	2	
31346 LETTERATURA RUSSA 3	4	
31349 LETTERATURA SPAGNOLA 3	30	27,6
31350 LETTERATURA TEDESCA 3	17	26,5
31352 LETTERATURA UNGHERESE 3	1	
31353 LETTERATURE ANGLO-AMERICANE 3	7	28
31356 LETTERATURE ISPANO-AMERICANE 3	4	
31357 LETTERATURE PORTOGHESE E BRASILIANA 3	11	26,5
31358 LINGUISTICA GENERALE 2	51	27,2
31359 LINGUISTICA STORICA	28	27,1
31501 STORIA COMPARATA DELL'ARTE NEI PAESI EUROPEI	13	27,7
31502 FILOLOGIA SLAVA 1	16	28,6
31506 FILOLOGIA IRANICA 1	1	
35466 LINGUA E LINGUISTICA ITALIANA 1	1	
35469 LINGUA E LINGUISTICA ITALIANA 2	1	
35524 LINGUA E LINGUISTICA ITALIANA 3	1	
42768 CINEMA E LETTERATURA	53	27
42780 PEDAGOGIA DELLA INTERCULTURALITA'	206	28,5
44931 STORIA DELLA CULTURA ANGLO-AMERICANA	1	
54705 LETTERATURA INGLESE 3	131	29,5
57798 STORIA E ISTITUZIONI DEI PAESI DEL MEDITERRANEO	2	
66467 LETTERATURE NORDICHE	23	28,9
66730 LINGUA E LINGUISTICA SPAGNOLA 3 (6 CFU)	1	
68878 LINGUISTICA GENERALE 1 (6 CFU)	1	
69450 LINGUA E LINGUISTICA RUSSA 2 (5 CFU)	1	
70349 LETTERATURA ITALIANA CONTEMPORANEA (4 CFU)	1	

\* Note: no average grade is given if the number of exams passed is less than or equal to 5.

## D.3. OPINIONS OF GRADUATES AND ATTENDING STUDENTS

*Opinions of graduates on the Study Programme.*

*Tables and graphs provide information on the number of graduates who expressed positive opinions on the Study Programme, focusing on opinions expressed by attending students on course units.*

### D.3.1. OPINION OF GRADUATES

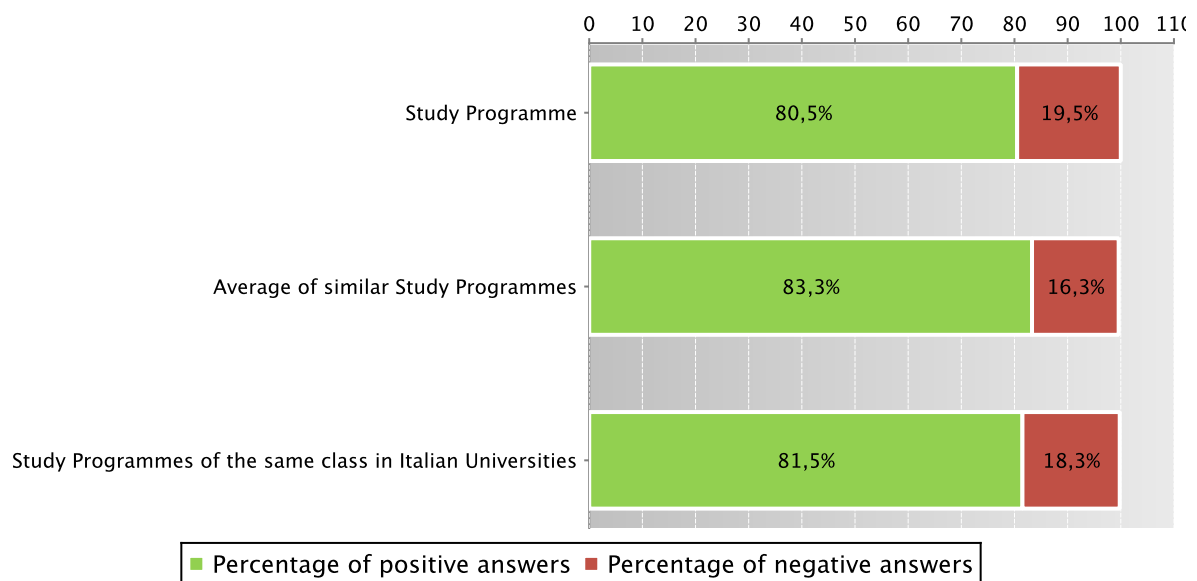
The **graph** shows the percentage of graduates (*AlmaLaurea* survey) who responded positively to the question: “**Are you generally satisfied with the Study Programme**”.

In addition, the **table** shows the percentage of students who answered “Yes, to the same programme at the university” to the question “Would you register again to the university?”.

The Study Programme data is compared with the average of **similar Study Programmes (which belong to the same group)**, and the average of Study Programmes of the same **class** of other Italian universities for the graduates of the indicated years.

Graduates in 2012 who responded positively to the question: “Are you generally satisfied with this Study Programme?”

*Data of the Study Programme D.M. 270/04 Lingue e letterature straniere (code 0979)*



*Data of the Study Programme D.M. 270/04 Lingue e letterature straniere (code 0979)*

		N. graduates	Completed Questionnaires	% of positive answers to the question: “Are you generally satisfied with this Study Programme?”	% of answers “yes to the same Programme in the same University” to the question “Would you register again to the University”
2011	Study Programme	82	77	79,2%	55,8%
	Average of similar Study Programmes	70,9	65,6	81,3%	63,8%
	Study Programmes of the same class in Italian Universities	739	708	87,0%	66,1%
2012	Study Programme	255	251	80,5%	60,2%
	Average of similar Study Programmes	72,1	68,4	83,3%	67,0%
	Study Programmes of the same class in Italian Universities	2399	2277	81,5%	59,1%



Symbols:

(\*) The opinions of the Study Programmes with less than 5 graduates are not shown.

Further information on [Graduates' Profile Report](#).

See data of previous academic years – Study Programme D.M. 509/99 Foreign Languages and Literature (code 0078) [paragraph D.5.3.1](#).

### D.3.2 ADDITIONAL DATA ON OPINIONS OF STUDENTS

#### D.3.2.1. OPINION OF ATTENDING STUDENTS

The **graph** shows the percentage of attending students who responded positively to the question in the questionnaire: “Are you generally satisfied with this course unit?” in academic year 2011/2012.

The **table** also shows the number of completed questionnaires.

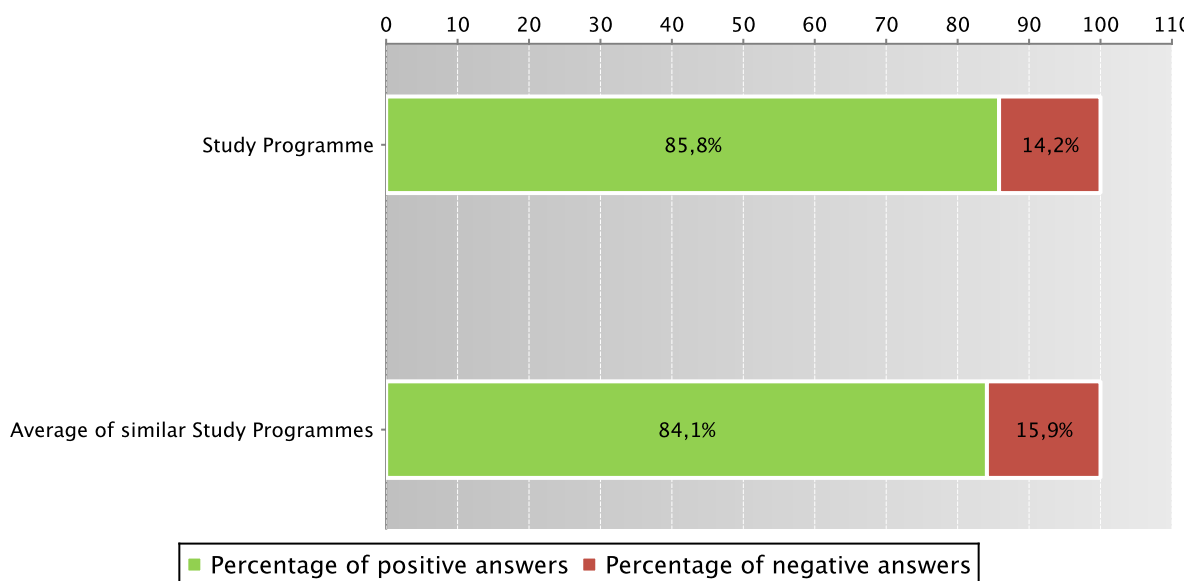
The Study Programme data is compared with the [average of similar Study Programmes \(which belong to the same group\)](#), for the indicated academic years.

The data concerning the students' opinion refers to the opinions of those attending lessons, whether they are enrolled in the current programme or a Study Programme running under pre-reform regulations (under D.M. 509).

For the University of Bologna the survey and subsequently analysis of the opinions of students attending the course is cared by Academic Affairs Division - Quality Assurance Department and Control and Finance Division - Support Planning and Evaluation Department. The overall results and the methods of collection and analysis are described in the document published online on the [Statistical Observatory of the University of Bologna](#) (see the note in the glossary).

Students who responded positively to the question: “Are you generally satisfied with this course unit?” in academic year 2011/2012

*Data of the Study Programme D.M. 270/04 Lingue e letterature straniere (code 0979) and of the Study Programme D.M. 509/99 Lingue e letterature straniere (code 0078)*



Data of the Study Programme D.M. 270/04 *Lingue e letterature straniere* (code 0979) and of the Study Programme D.M. 509/99 *Lingue e letterature straniere* (code 0078)

		Number of completed questionnaires	% of positive answers concerning the general satisfaction with the course unit – Question 19
a.y. 2009/2010	Study Programme	3858	85,0%
	Average of similar Study Programmes	1529,9	83,6%
a.y. 2010/2011	Study Programme	3741	85,5%
	Average of similar Study Programmes	1445,9	83,8%
a.y. 2011/2012	Study Programme	4082	85,8%
	Average of similar Study Programmes	1839,3	84,1%

Symbols:

(\*) When there is a small number of questionnaires, the percentage of positive opinions on overall satisfaction is not presented.

Further information on [Rapporto Opinione degli studenti frequentanti sulle attività didattiche](#) (the content is in Italian).

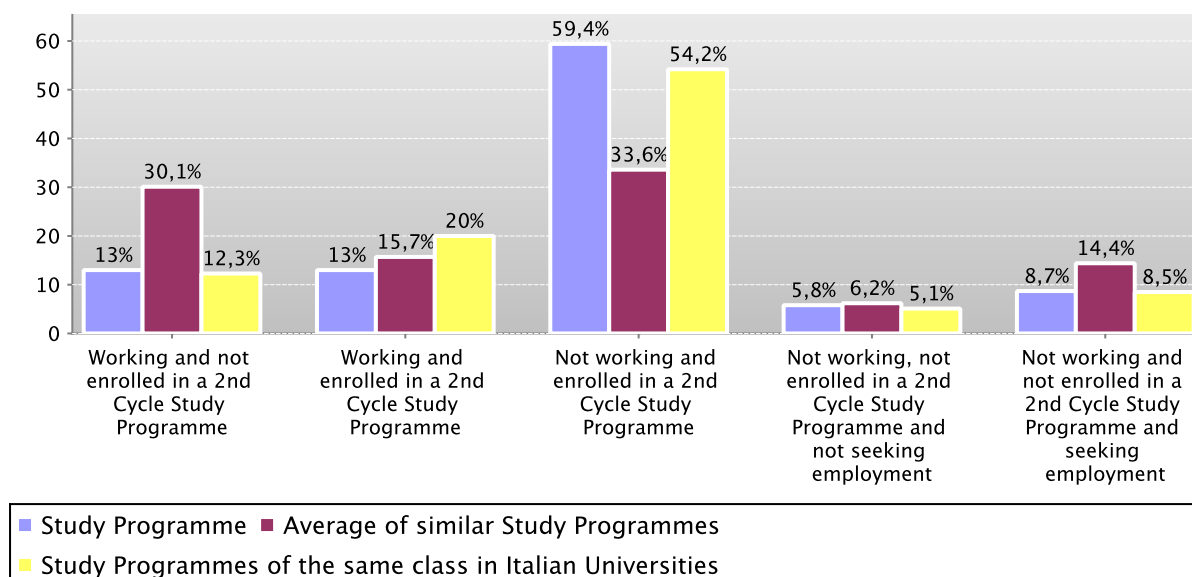
## D.4. ENTRY INTO THE WORLD OF WORK

*Employment situation of graduates of the Study Programme.*

*Tables and graphs provide information on the employment situation of graduates one year after graduating.*

### D.4.1. EMPLOYMENT SITUATION

Employment situation of graduates in 2011 one year after graduating



		N. graduates interviewed	Employment and education situation (1)					Not working, not seeking employment, but following a university programme/traineeship (2)	Degree's appropriateness for the job (referred to the graduates who just work) (3)	
			Working and not enrolled in a 2nd Cycle Study Programme	Working and enrolled in a 2nd Cycle Study Programme	Not working and enrolled in a 2nd Cycle Study Programme	Not working, not enrolled in a 2nd Cycle Study Programme and not seeking employment	Not working and not enrolled in a 2nd Cycle Study Programme and seeking employment		Effective / very effective	Quite effective
Graduation Year 2011	Study Programme	69	13,0%	13,0%	59,4%	5,8%	8,7%	47,8%	38,9%	27,8%
	Average of similar Study Programmes	61,3	30,1%	15,7%	33,6%	6,2%	14,4%	26,9%	30,2%	27,8%
	Study Programmes of the same class in Italian Universities	626	12,3%	20,0%	54,2%	5,1%	8,5%	40,7%	30,5%	29,9%

See data of previous academic years – Study Programme D.M. 509/99 Foreign Languages and Literature (code 0078) [paragraph D.5.4.1.](#)

## D.5. INFORMATION ON PRE-REFORM PROGRAMMES (DM 509/99)

### D.5.1. STUDENTS STARTING THEIR UNIVERSITY CAREERS

*Characteristics of incoming students at the beginning of their university careers. Tables and graphs provide information on the number of registered students, focusing on the characteristics of the students, results of any entrance tests and students assigned additional learning requirements.*

#### D.5.1.1. ENROLMENTS AND REGISTRATIONS

Data of enrolments and registrations of the last three academic years are shown in [paragraph D.1.1.](#)

#### D.5.1.2. ADDITIONAL DATA ON STUDENTS' STARTING THEIR UNIVERSITY CAREERS

##### D.5.1.2.1. CANDIDATES REGISTERED FOR THE ENTRANCE EXAM

Data of candidates registered for the entrance exam are shown in [paragraph D.1.2.1.](#)

##### D.5.1.2.2. INCOMING STUDENTS

Data of incoming students of the last three academic years are shown in [paragraph D.1.2.2.](#)

### D.5.2. REGULARITY OF STUDIES

*Insight into the regularity with which the students pass their exams.*

*Graphs and tables provide information on the number of students who leave the programme after the first year and the number of regular graduates, focusing on the number of credits obtained at the end of the first year, the number of exams passed and the average grade achieved for each course unit.*

#### D.5.2.1. STUDENTS LEAVING THE PROGRAMME BETWEEN YEARS 1 AND 2

Data of students leaving the Study Programme of the last three academic years are shown in [paragraph D.2.1.](#)

### D.5.2.2. REGULAR GRADUATES

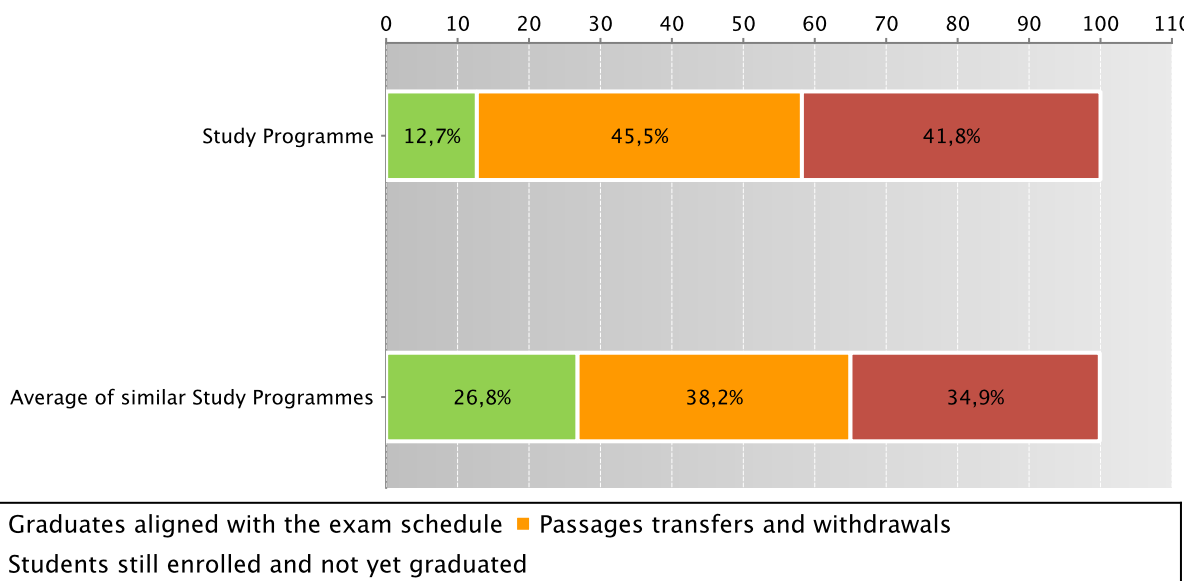
Here you will find information on regular graduates, on how many students, at the end of the regular programme duration, left the programme and how many are still enrolled but not aligned to the exam schedule.

The **graph** and the **table** show the situation concerning **registered students** for the indicated academic year, at the end of the regular duration of the Study Programme, highlighting the percentage of regular graduates, the number of students still enrolled (**not aligned to the exam schedule** and **repeating** students), students who have left the programme (including **passages**, **transfers** and **withdrawals**).

The Study Programme data is compared with the average of **similar Study Programmes** (which belong to the same group) for students registered in the indicated academic years.

Situation of students 2007/2008 at the end of regular duration of the study programme

Data of the Study Programme D.M. 509/99 Foreign Languages and Literature (code 0078)



Data of the Study Programme D.M. 509/99 Foreign Languages and Literature (code 0078)

	Registered students	Regular graduates		Passages transfers and withdrawals		Students still enrolled and not yet graduated		
		N.	%	N.	%	N.	%	
Students 2007/2008	Study Programme	569	72	12,7%	259	45,5%	238	41,8%
	Average of similar Study Programmes	175	47	26,8%	67	38,2%	61,1	34,9%

Go back to [D.2.2. Regular graduates](#)

### D.5.2.3. ADDITIONAL DATA ON REGULARITY OF STUDIES

#### D.5.2.3.1. CREDITS OBTAINED BY STUDENTS IN THE 1ST YEAR

Data of credits obtained by students in the 1st year of the last three academic years are shown in paragraph [D.2.3.1.](#)

#### D.5.2.3.2. EXAMS PASSED AND AVERAGE GRADE

Data of exams passed and average grade are shown in paragraph [D.2.3.2.](#)

### D.5.3. OPINIONS OF ATTENDING STUDENTS AND GRADUATES

*Opinions of graduates on the Study Programme.*

Tables and graphs provide information on the number of graduates who expressed positive opinions on the Study Programme, focusing on opinions expressed by attending students on course units.

#### D.5.3.1. OPINION OF GRADUATES

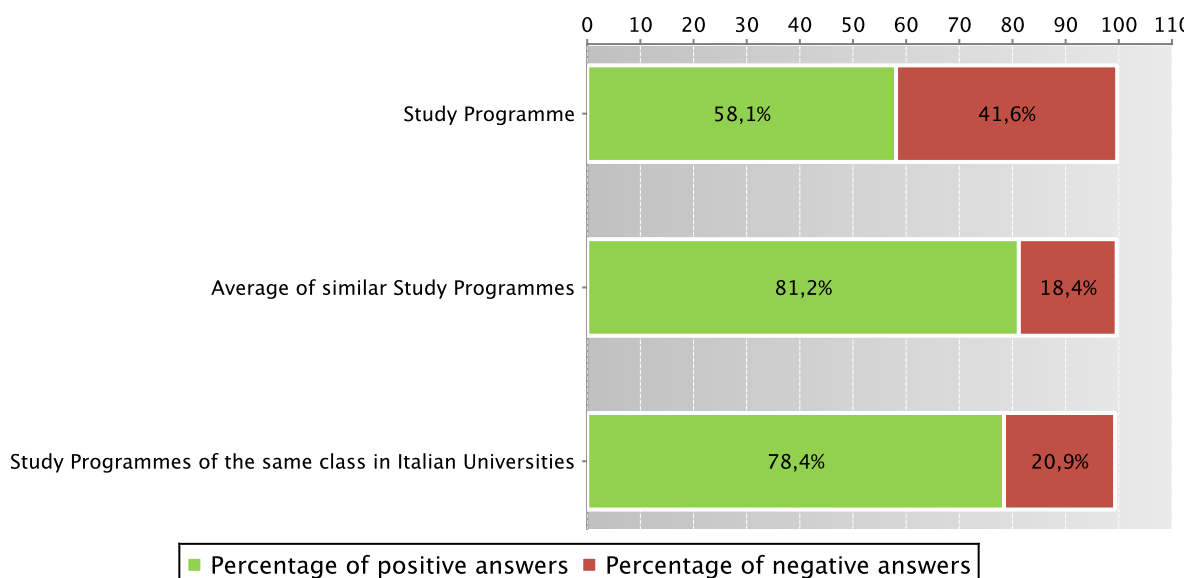
The **graph** shows the percentage of graduates (AlmaLaurea survey) who responded positively to the question: “**Are you generally satisfied with the Study Programme**”.

In addition, the **table** shows the percentage of students who answered “Yes, to the same programme at the university” to the question “Would you register again to the university?”.

The Study Programme data is compared with the average of similar Study Programmes (which belong to the same group), for the indicated years.

Graduates in 2010 who responded positively to the question: “Are you generally satisfied with this Study Programme?”

*Data of the Study Programme D.M. 509/99 Lingue e letteratura straniere (code 0078)*



*Data of the Study Programme D.M. 509/99 Lingue e letteratura straniere (code 0078)*

		N. graduates	Completed Questionnaires	% of positive answers to the question: “Are you generally satisfied with this Study Programme?”	% of answers “yes to the same Programme in the same University” to the question “Would you register again to the University”
2010	Study Programme	331	310	58,1%	41,0%
	Average of similar Study Programmes	114,7	103	81,2%	63,5%
	Study Programmes of the same class in Italian Universities	4784	4501	78,4%	53,2%

Symbols:

(\*) The opinions of the Study Programmes with less than 5 graduates are not shown.

Further information on [Graduates’ Profile Report](#).

Go back to [D.3.1. Opinion of graduates](#)

#### D.5.3.2 ADDITIONAL DATA ON OPINIONS OF STUDENTS

### D.5.3.2.1. OPINION OF ATTENDING STUDENTS

Data of opinion of attending students of the last three academic years are shown in paragraph D.3.2.1.

## D.5.4. ENTRY INTO THE WORLD OF WORK

*Employment situation of graduates of the Study Programme.*

*Tables and graphs provide information on the employment situation of graduates one year after graduating.*

### D.5.4.1. EMPLOYMENT SITUATION

The paragraph shows the employment situation of graduates one year after graduating.

The data is taken from the [AlmaLaurea](#) reports on the employment situation of graduates.

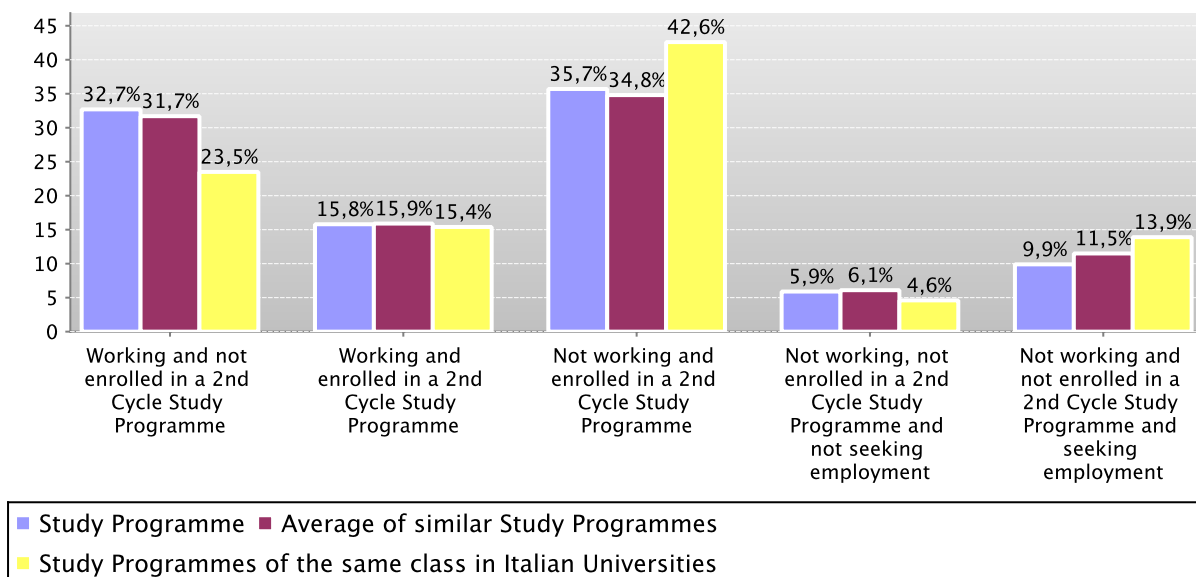
The **graph** shows who is working, who is not working but has enrolled in a Second Cycle study programme, who is not working and is not seeking employment, who is not working but is seeking employment.

In addition, the **table** shows the number of graduates interviewed, the number involved in internships and traineeships and the appropriateness of their degree to the job.

The Study Programme data is compared with the average of similar Study Programmes (which belong to the same group) and the average of Study Programmes of the same faculty of other Italian universities for the graduates of the indicated years.

Employment situation of graduates in 2010 one year after graduating

*Data of the Study Programme D.M. 509/99 Foreign Languages and Literature (code 0078)*



Data of the Study Programme D.M. 509/99 Foreign Languages and Literature (code 0078)

		N. graduates interviewed	Employment and education situation (1)					Not working, not seeking employment, but following a university programme/traineeship (2)	Degree's appropriateness for the job (referred to the graduates who just work) (3)	
			Working and not enrolled in a 2nd Cycle Study Programme	Working and enrolled in a 2nd Cycle Study Programme	Not working and enrolled in a 2nd Cycle Study Programme	Not working, not enrolled in a 2nd Cycle Study Programme and not seeking employment	Not working and not enrolled in a 2nd Cycle Study Programme and seeking employment		Effective / very effective	Quite effective
Graduation Year 2009	Study Programme	341	30,8%	19,1%	34,6%	5,9%	9,7%	29,6%	31,7%	32,3%
	Average of similar Study Programmes	117,8	30,0%	17,9%	35,5%	5,8%	10,8%	28,8%	33,7%	28,1%
	Study Programmes of the same class in Italian Universities	4030	23,2%	17,7%	42,6%	4,9%	11,6%	27,7%	28,8%	32,6%
Graduation Year 2010	Study Programme	272	32,7%	15,8%	35,7%	5,9%	9,9%	30,1%	31,5%	27,6%
	Average of similar Study Programmes	97	31,7%	15,9%	34,8%	6,1%	11,5%	26,7%	32,4%	25,8%
	Study Programmes of the same class in Italian Universities	4186	23,5%	15,4%	42,6%	4,6%	13,9%	27,6%	26,8%	32,0%

Symbols:

(\*) The opinions of the Study Programmes with less than 5 graduates are not shown.

### Notes on the AlmaLaurea report on the employment situation of graduates

(1) "Employment and education situation": the number of employed graduates is the sum of those working and those working who are also enrolled in a 2nd cycle degree programme. The number of those enrolled in a 2nd cycle degree programme is the sum of those who are working and studying and those who are only studying.

(2) "Number of those who do not work, who are not seeking employment but who are following a university programme/traineeship": the definition includes those who are enrolled in traineeships, PhD degrees, specialisation schools, Italian "master universitari" (first and second level). The presentation of this data complies with article 2 of D.M. 544 of 31st October 2007, as later provided for in Management Decree no. 61 of 10th June 2008 (transparency requirements).

(3) The evaluation of the appropriateness of the degree is obtained by a combination of the requirement of the relative qualification for the job held and the level of usage of the skills learned at university.

Further information on [Graduates' Employment report](#).

Go back to [D.4.1. Employment situation](#)

## E. FIND OUT MORE: THE QUALITY OF YOUR STUDY PROGRAMME

The University of Bologna has identified its objectives as the *personal, cultural and professional growth of students and the improvement of the quality of learning, also in relation to the needs of society* (Strategic Plan 2010-2013).

Students, employers and society as a whole, have the right to effective learning for individual and intellectual growth, to develop critical sense and to prepare for the world of work.

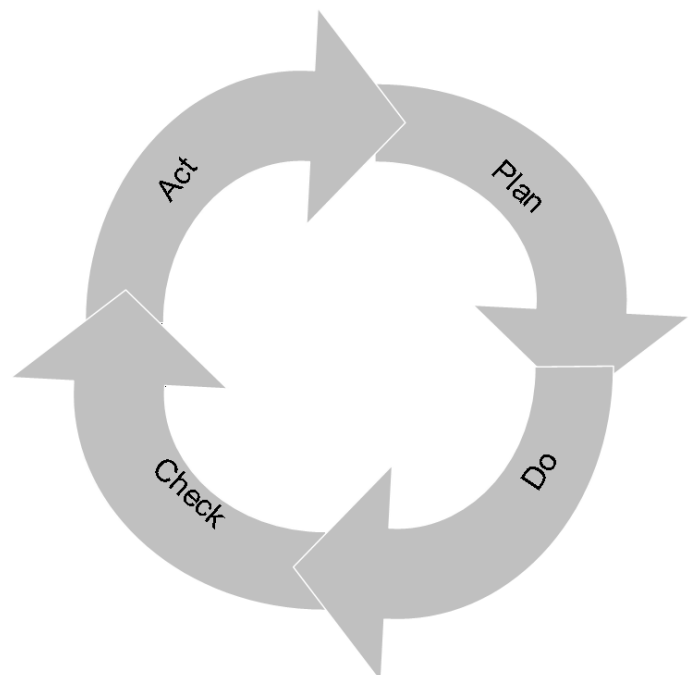
In the Statute and the Strategic Plan 2010-2013 the University of Bologna acknowledges its responsibility in guaranteeing the quality of its study programmes, and for this purpose adopts an "internal quality assurance system".

### The Internal Quality Assurance system

The internal quality assurance system is a set of processes and responsibilities adopted to guarantee the quality of Study Programmes at the University of Bologna.

The guarantee of the quality of a Study Programme is the correspondence of the results achieved with the set objectives, in the following phases:

- Plan: defining the objectives
- Do: implementing the planned actions
- Check: checking that the objectives have been achieved
- Act: planning improvement action



This path responds to the expectations of students, guides teaching behaviour and provides indicators for the assessment of results. Self-assessment is based on the analysis of significant data (for example, the number of students graduating in line with the exam schedule, students' opinions and the employment rates of graduates) and highlights strengths and weaknesses in order to reflect on the achieved results, critically consider one's own working methods and take steps for the continual improvement of the Programme. This path involves all educational stakeholders, including students, in order to make use of the contributions of everyone with first-hand knowledge of the Study Programme. Improvement is therefore a day to day development, concerning all aspects of teaching: from the lesson timetable to the publication of on-line programmes, from classroom management to exam methods, and the actual design of the Programme.

This is what happens in each phase:

- **Planning:** the Study Programme is the result of a proposal from the teaching structures and approved by the Academic Bodies.
- **Management:** Schools, Departments and Study Programmes manage the activities required to ensure teaching. The activities are organised as follows:



What we do	Who does what				
	Professors	Study Programme	Schools	Departments	General Administration
Teaching calendar, lessons programme and exam schedules			x		
Management of financial resources			x	x	
Classroom teaching	x				
Management of classrooms and laboratories			x	x	
Libraries and study rooms			x	x	
Approval of individual study plans		x			
Communication and information		x	x		Academic Affairs Division
Guidance service		x	x		Academic Affairs Division
Internships		x	x		Academic Affairs Division
Administrative services: Student Administration Office					Academic Affairs Division
Administration services: Degree programme office			x		Academic Affairs Division
Study grants and loans ad honorem					Academic Affairs Division
Student mobility: university subsidies and programmes					International Relations Division
Mobility: study grants for dissertations abroad			x		
Mobility: authorisations and recognitions		x			
Other students support services		x	x		x

- Internal assessment:** every Study Programme periodically assesses its own results, evaluating, for example, the number of enrolled students, the number of withdrawing students, student opinions etc.; in this way, the strengths and weaknesses, as well as any implemented improvement actions, are highlighted. This phase is organised as follows:

What we do	Who does what
<p><b>Definition, gathering and publication of evaluation data</b> According to the general guidelines of the University and national and international standards, are defined the tools through which should be evaluated the results (indicators). The survey data to be evaluate are published every year on the Report of the Study Program.</p>	Academic Bodies
<p><b>Self-Assessment</b> The Schools and Study Programmes assess the effectiveness of the previously adopted solutions, analyse the progress of their learning activities and draw up proposals for improvement.</p>	Schools and Study Programmes
<p><b>Internal audit</b></p> <p>The results of the self-assessment process are reviewed in the following phases:</p> <ul style="list-style-type: none"> <li>• <b>Analysis:</b> the University Quality Manager analyses the review documents, considering the ability to identify problems, propose solutions and the overall development of the internal quality assurance system.</li> <li>• <b>Review:</b> The observations on the results obtained and the good practices adopted are examined together with the persons in charge of the Schools and Study Programmes in meetings organised by scientific-disciplinary field. The persons in charge receive the observations and inputs on the areas for development and the actions to be adopted in future to improve results.</li> <li>• <b>Sharing:</b> the conclusions of the review activities are submitted to the Academic Bodies and the University Evaluation Board.</li> </ul>	<p>Quality Manager</p> <p>Vice Rector for Teaching and Education</p> <p>Academic Bodies</p>
<ul style="list-style-type: none"> <li>• <b>Improvement:</b> on the basis of the results of the internal audit, the Schools and Study Programmes plan improvement activities, to ensure that the Study Programmes increasingly respond to the needs of society. The cycle then starts over again, with the definition of actions to be implemented, the results of which are in turn verified, in a continuous path that guarantees the quality of education.</li> </ul>	

## F. GLOSSARY TERMS

### Additional Learning Requirements

Students enrolling in the first year of a first cycle or single cycle degree and who, following the results of the entrance exams established for each study programme, do not possess the knowledge required for access to the programme, are assigned additional learning requirements (OFA).

The OFA are fulfilled by passing an assessment test defined by the programme.

The non-fulfilment of the requirements by the date set by the Academic Bodies and published on the University Portal will lead to the re-enrolment in the first year of the programme.

### AlmaLaurea

AlmaLaurea is an innovative in-line database service of graduates' curriculum vitae (1,620,000 CVs, from 53 Italian universities as of 05/07/2012), which offers a link between graduates, universities and businesses.

Created in 1994 on the initiative of the Statistical Observatory of the University of Bologna, managed by a consortium of Italian universities with the support of the Ministry of Education, University and Research, the purpose AlmaLaurea is to act as a point of contact between businesses and graduates, a reference within universities for anyone (students, businesses, etc...) working in the field of university studies, employment and the condition of young people at different levels.

### Average of similar study programmes (belonging to the same group)

Average of the Study Programmes (which belong to the subject group)

Calculated average which refers to all study programmes of the same cycle which belong to the subject group.

There are four groups, composed as follows:

- **BIOMEDICAL** group: Study Programmes of the Schools of Pharmacy, Biotechnology and Sport Science; Medicine; Agriculture and Veterinary Medicine
- **SCIENTIFIC-TECHNOLOGICAL** group: Study Programmes of the Schools of Engineering and Architecture; Sciences
- **SOCIAL SCIENCES** group: Study Programmes of the Schools of Economics, Management, and Statistics; Law, Political Sciences
- **HUMANITIES** group: Study Programmes of the Schools of Arts, Humanities, and Cultural Heritage; Foreign Languages and Literatures, Interpreting and Translation; Psychology and Education

### CFU University Learning Credits

University Learning Credits (CFU) were introduced under Italian Ministerial Decree no. 509/99 to comply with European legislation, and are a measurement of the volume of learning, including individual study, required of students; generally 1 CFU corresponds to 25 hours of a student's "overall learning effort".

### Class

Degree classes group together study programmes of the same level and with the same key learning outcomes and available learning activities for a given number of credits and in sectors which are identified as indispensable. The features of the classes are set nationally, by Ministerial Decree, and are therefore common to all universities.

### Cohort

Cohort refers to a group of students enrolled in the same academic year.

### Enrolment status

In terms of enrolment, students may be:

- **Regularly enrolled:** students enrolled for as many or fewer years than the legal duration of the study programme, who do not fall into any of the following categories;
- **Not aligned with the exam schedule:** students who, without having graduated, have enrolled in all the years of the study programme and which, for programmes with compulsory attendance, have obtained all attendance certificates;
- **Repeating:** students re-enrolling in the same year of a programme again. Starting from academic year 2009-2010, students who have not fulfilled the assigned additional learning requirements within the deadline have to enrol in the 1st year as repeating students.

### Entrance exam

Enrolment in a study programme may be free access or restricted access.

For all programmes with restricted access, candidates are required to sit an entrance exam and there are a limited number of places available. The entrance exam is a test which is used to draw up a graded list of candidates; students may enrol in the programme according to their place in the list. The methods of managing the call for applications and the list of candidates, including the methods for filling any unclaimed places, may vary from year to year. The test may be specific to a Degree Programme or may be part of a single exam covering several programmes from the same university or from other universities (during the registration the students should indicate their first choice).

The following definitions apply:

**Available places** = the number of places laid down in the call for applications to the Study Programme, or determined by subsequent legal provisions; these exclude any additional places reserved according to special provisions of the programme (e.g. for international study programmes, they do not include places for foreign students selected from other universities; for all programmes with restricted access regulated nationally, these do not include the places reserved for transferring students).

**Number of candidates for the exam** = number of students registered for the exam indicating the study programme as their first choice;

**Number of participants in the exam** = number of students participating in the exam indicating the study programme as their first choice;

**Number of participants in the exam for every available place** = number of students participating in the exam who indicated the study programme as their first choice as a ratio of the number of places available on the programme.

#### First year enrolments

This includes all students enrolled in the first year, including those joining the study programme in its first year through transferrals, as well as those enrolled in the first year but not for the first time (e.g. repeating students).

#### New Careers

Students who start a new university career (excluding transfers) from year one in a second cycle programme.

#### Passages and transfers

**Passage:** when a student applies to move to a different study programme from the one enrolled in the previous year, within the same university.

**Transfer:** when a student transfers from a study programme in one university to any programme in another university.

#### Registered students

Students who begin a career in the Italian University System for the first time and who enrol in the first year (i.e. for whom no previous university careers are recorded) of a First Cycle (L509, L) or Single Cycle programme (LSCU, LMCU)

#### Statistical Observatory of the University of Bologna

The Statistical Observatory was founded in 1997 in order to “provide the university governing bodies with a reliable and timely documentary and monitoring database aiming to promote decision-making processes and planning, particularly of learning activities and other services targeting the student population” (art.1 of the Founding and Operational Regulation). Following the disabling of the Statistical Observatory, as resolved by the Board of Governors on 14 December 2010, from the second semester of academic year 2010-11 the survey and subsequently analysis of the attending students opinion is cared for the University of Bologna by Academic Affairs Division - Quality Assurance Department and Control and Finance Division - Support Planning and Evaluation Department. The overall results and the methods of collection and analysis are described in the document published online on the [Statistical Observatory of the University of Bologna](#).

#### University DataWarehouse

In information service for the managers of the University of Bologna organisational departments which gathers, integrates and reorganises data from various sources and makes it available for analysis and evaluation for the purposes of planning and decision-making.

#### Withdrawal

Suspension of studies by students who do not register in the next academic year, or who drop out from the degree programme.