

2013



ALMA MATER STUDIORUM
UNIVERSITÀ DI BOLOGNA



School of Arts, Humanities, and Cultural Heritage
LAUREA MAGISTRALE (SECOND CYCLE
DEGREE/TWO YEAR MASTER - 120
ECTS) IN CULTURAL ANTHROPOLOGY
AND ETHNOLOGY A.Y. 2013/2014
Programme Director Prof. Cristiana Facchini

REPORT

Study Programme Report
Cultural Anthropology and Ethnology
Programme ex D.M. 270/04 - Code 0964 - Class LM-1
School of Arts, Humanities, and Cultural Heritage
Programme Director Prof. Cristiana Facchini

Created in collaboration with Teaching and Learning Administrative Area (AFORM – Area della Formazione) – Quality Assurance Unit

Edited by *AAGG – University Web Portal Division* and *CeSLA – Web Technology Division*, with MultiPublishing technology

Release date: July 2013

Academic year of reference: 2013/2014

www.unibo.it/QualityAssuranceEn

INDICE

What is the Study Programme Report?	1
A. Presentation and prospects	2
A.1. Presentation	2
A.2. Admission requirements	2
A.3. Learning outcomes	3
A.4. Career opportunities	4
A.5. Opinion of social partners and potential employers	5
A.6. Further studies	5
B. Teaching and Learning	6
B.1. Course Structure Diagram	6
B.2. Calendar and lecture timetable	6
C. Resources and services	7
C.1. Teachers	7
C.2. Student services: offices	7
C.2.1. Future students	7
C.2.2. Enrolled students	7
C.2.3. International students	7
C.2.4. Graduates	7
D. The Study Programme in figures	8
D.1. Students starting their university careers	8
D.1.1. Enrolments	8
D.1.2. Additional data on students' starting their university careers	9
D.1.2.1. Candidates registered for the entrance exam	9
D.1.2.2. Incoming students	10
D.2. Regularity of studies	12
D.2.1. Students leaving the Programme between years 1 and 2	12
D.2.2. Regular graduates	13
D.2.3. Additional data on regularity of studies	14
D.2.3.1. Credits obtained by students in the 1st year	14
D.2.3.2. Exams passed and average grade	15
D.3. Opinions of graduates and attending students	17
D.3.1. Opinion of graduates	17
D.3.2. Additional data on opinions of students	19
D.3.2.1. Opinion of attending students	19
D.4. Entry into the world of work	21
D.4.1. Employment situation	21
D.5. Information on pre-reform programmes (DM 509/99)	22
D.5.1. Students starting their university careers	22
D.5.1.1. Enrolments	22
D.5.1.2. Additional data on students' starting their university careers	23
D.5.1.2.1. Candidates registered for the entrance exam	23
D.5.1.2.2. Incoming students	23
D.5.2. Regularity of studies	23
D.5.2.1. Students leaving the Programme between years 1 and 2	23
D.5.2.2. Regular graduates	23
D.5.2.3. Additional data on regularity of studies	23
D.5.2.3.1. Credits obtained by students in the 1st year	23
D.5.2.3.2. Exams passed and average grade	23
D.5.3. Opinions of attending students and graduates	23

D.5.3.1. Opinion of graduates	23
D.5.3.2 Additional data on opinions of students	23
D.5.3.2.1. Opinion of attending students	23
D.5.4. Entry into the world of work	24
D.5.4.1. Employment situation	24
E. Find out more: the quality of your Study Programme	26
F. Glossary terms	29

WHAT IS THE STUDY PROGRAMME REPORT?

What is the Study Programme Report?

The Study Programme Report provides updated information which is important for the purposes of Quality Assurance and is published annually by the University of Bologna.

The main aspects of the teaching programme are described in detail, with a view to assuring the principle of transparency and promoting self-assessment and continuous improvement processes.

The document provides a concrete overview of the features and results of the Study Programme for students, families, employers and so on.

For example, regarding the current issue of employment, it describes the learning outcomes and career opportunities; it also includes statistics on the percentage of employed graduates (D.4. Employment situation).

The document is organised into five sections and a glossary:

A. Presentation and prospects

Key information on the Study Programme, including the expected learning outcomes, career opportunities and further studies.

B. Teaching and Learning

The updated course structure diagram with the full titles and listings of the course units and the latest published lecture timetable.

C. Resources and services

The list of teaching staff and their relative curricula, the offices (secretariats), services (work placements) and infrastructures (libraries, laboratories) available to students.

D. The Study Programme in Figures

Key data shows how many students are enrolled, how many have been assigned additional learning requirements, how many drop out after the first year, how many graduate in line with the programme schedule, the opinions of attending and graduating students on the teaching programmes and information concerning graduate employment.

E. Find out more: the quality of your Study Programme

How the quality system applied to your Study Programme works. The quality system of your Study Programme is a set of processes and responsibilities adopted to guarantee the quality of all Study Programmes at the University of Bologna.

NOTES:

- Reports are available for all Study Programmes for which it is possible to enrol in the first year in academic year 2012/2013: the information and data provided is as updated as possible.
- Sections A, B and C provide data for the academic year 2012/2013.
- Section D presents data regarding the Study Programmes in the last three academic years.
- The information and data were taken from the University databases and the reports published by the [Statistical Observatory of the University of Bologna](#) and [AlmaLaurea](#), and are updated to **15 June 2012**.

A. PRESENTATION AND PROSPECTS

This section presents the key information concerning the Study Programme, including the expected learning outcomes, career opportunities and further studies, updated to the academic year 2013/2014.

A.1. PRESENTATION

This paragraph provides information on the specific learning outcomes of the Study Programme and the curriculum.

The objective of this 2nd cycle degree programme is to provide advanced scientific and vocational training geared to the complex socio-cultural problems of contemporary society. On completion of the degree programme students will possess in-depth knowledge in the demographic-ethnic-anthropological disciplines that deal with local and global socio-cultural pluralism and dynamics. They will have specialist skills in analysing political and religious organisations and associations. Through a combination of lectures, internships and field research, they will also learn to apply techniques relating to data collection and processing, and handle the media of communication and information management. They will be able to speak and write fluently in at least one European Union language other than their own.

While some course units analyse the basic anthropological issues of the contemporary world, a group of course units deal with religious questions over a broader time-span. Course units are held by experts with direct personal experience of the various cultural areas, and will cover essential aspects of the ancient and modern religious worlds. The programme aims to produce two main professional profiles: anthropologist and expert in religious cultures.

A.2. ADMISSION REQUIREMENTS

This paragraph provides information on the knowledge required for admission to the Study Programme.

To successfully follow the Second-cycle degree in Cultural Anthropology and Ethnology graduates must possess basic knowledge and competences in the field of social sciences, i.e. cultural anthropology, sociology or social psychology. All these subjects offer an essential cognitive approach to the study of more specialised anthropology courses.

Applicants must also have basic knowledge and competences in the area of religions which are currently one of the most important areas of study in anthropology (especially the history of the different Christianities and/or the diachronic and synchronic differences between religions).

Moreover, students must have a background in history that enables them to understand cultural phenomena as they develop over time. A background knowledge of geography and philosophy would be useful because of the overlap with a number of aspects of anthropology.

Admission to the second-cycle degree programme is subject to the requirements indicated at point 1 together with the assessment of an adequate level of personal preparation.

(1) Admission requirements

The admission requirements are as follows:

A) students must possess a 1st cycle degree in one of the following classes, or other suitable qualification obtained abroad:

- ex Italian Ministerial Decree no. 270/04

L-1 Beni culturali

L-3 Discipline delle arti figurative, della musica, dello spettacolo e della moda

L-5 Filosofia

L-6 Geografia

L-10 Lettere

L-11 Lingue e culture moderne

L-12 Mediazione linguistica

L-15 Scienze del turismo

L-20 Scienze della comunicazione

L-21 Scienze della pianificazione territoriale, urbanistica, paesaggistica e ambientale

L-24 Scienze e tecniche psicologiche

L-31 Scienze e tecnologie informatiche

L-32 Scienze e tecnologie per l'ambiente e la natura

L-33 Scienze economiche

L-36 Scienze politiche e delle relazioni internazionali

L-37 Scienze sociali per la cooperazione, lo sviluppo e la pace

L-39 Servizio sociale

L-40 Storia

L-41 Statistica

L-42 Storia

L-43 Tecnologie per la conservazione e il restauro dei beni culturali

ex Italian Ministerial Decree no. 509/99:

Classe 3-Scienze della mediazione linguistica

Classe 5-Lettere

Classe 7-Urbanistica e scienze della pianificazione territoriale e ambientale

Classe 11-Lingue e culture moderne

Classe 13-Scienze dei beni culturali

Classe 14-Scienze della comunicazione

Classe 15-Scienze politiche e delle relazioni internazionali

Classe 23-Scienze e tecnologie della arti figurative, della musica, dello spettacolo e della moda

Classe 26-Scienze e tecnologie informatiche

Classe 27-Scienze e tecnologie per l'ambiente e la natura

Classe 28-Scienze economiche

Classe 29-Filosofia

Classe 30-Scienze geografiche

Classe 34-Scienze e tecniche psicologiche

Classe 35-Scienze sociali per la cooperazione, lo sviluppo e la pace

Classe 36-Scienze sociologiche

Classe 37-Scienze statistiche

Classe 38.-Storia

Classe 39-Scienze del turismo

Classe 41-Tecnologie per la conservazione e il restauro dei beni culturali.

B) in the following scientific-disciplinary sectors students must have acquired at least:

- 10 CFU in the scientific-disciplinary sectors: M-DEA/01; M-STO/07; M-STO/06

- 5 CFU in the scientific-disciplinary sectors: M-STO/02; M-STO/04;M-STO/05; M-FIL/06; SPS/07; SPS/08; MGGR/01; M-PSI/01

Admission to the second-cycle degree programme for graduates who do not have the above requirements will be subject to assessment by a Committee which will interview applicants to ascertain their possession of the knowledge and competences required and determine their eligibility.

(2) Assessment of an adequate level of personal preparation

Assessment of personal preparation is deemed satisfactory for students with a first cycle degree mark of 70/110 or over.

Graduates with a degree mark lower than 70/110 must attend an interview for assessment of their personal preparation. The interview is assessed by the same Committee that is responsible for evaluating the admission requirements.

N.B.

For students with qualifications obtained abroad, the assessment of admission requirements (suitability of the qualification to the degree class indicated, evaluation of the curriculum, credits and learning outcomes in line with the competences and the scientific-disciplinary sectors envisaged, final mark achieved) is carried out through examination of the applicant's curriculum by the Board of Study Programme which will determine whether an interview is necessary to determine the student's level of personal preparation. The interview can also be held in videoconference.

A.3. LEARNING OUTCOMES

This paragraph provides information on the knowledge and skills students will have acquired by the end of the Programme.

KNOWLEDGE AND UNDERSTANDING:

Graduates will possess in-depth knowledge of the demographic-ethnological-anthropological disciplines, and how the various theories and methods of ethnographic survey have developed historically and scientifically. They will be able to apply these to their fields of study.

The above knowledge and understanding will come through attending lectures, workshops, seminars and/or internships, as well as through practical tasks and home study, as prescribed by the Degree Programme Regulations.

Knowledge of foreign languages is developed via seminars in the foreign language and reading set texts in the foreign language as indicated in the syllabi of course units. Assessment is mainly through exams and/or intermediate tests (oral and/or written exams, tests, oral presentations).

APPLYING KNOWLEDGE AND UNDERSTANDING:

Graduates:

- will possess specific knowledge of history, social science and languages, and be able to apply these to the comparative and diachronic study of socio-cultural phenomena (past and contemporary) within Europe and further afield.

- will know the basic tenets of the world religions and will know how to analyse sources of tangible or intangible cultural material appertaining to a religion or religious groups;
- will know how to apply various research techniques (active observation, structured and semi-structured interviews) and use specific instruments, including IT and multimedia, for on-site surveys and collection of important empirical data; these will then be summarised for use by others;
- will possess organisational and planning skills.

The ability to apply such knowledge and understanding will form through critical reading of texts set for home study and prompted by classroom activities.

Assessment is mainly through exams and/or intermediate tests (oral and/or written exams, tests, oral presentations).

MAKING JUDGEMENTS:

Graduates:

- will have mastered the methodologies of ethnographic survey and be able to analyse problems related to communities, associations and organisations where cultural heterogeneity (of identity, social background and religion) is important;
- will be able to bring information and solutions to bear on religious relations and conflicts among ethnic groups within a civil community or between religious groups and public institutions; or again where religious groups have different views of the family, school, nutrition, and relations between the genders;
- will be proficient at qualitative analysis of empirical data relating to socio-political processes of cultural construction, stratification and change;
- will understand the specific methodological contribution of ethnic-anthropological surveys when it comes to designing, implementing and assessing projects aimed at: knowing, understanding and appreciating the tangible and intangible heritage of a given culture; understanding specific socio-cultural behaviour and mediating between religions and cultures.

Judgement skills are developed and assessed above all through practical activities, organised seminars, internships, preparation of reports, as well as during the task assigned in preparation of the final exam.

COMMUNICATION SKILLS:

Graduates will have learnt to promote and facilitate communication within multicultural contexts and will be versed in the communicative registers of these contexts.

Written and oral communication skills are developed via seminars, workshops and practical tasks, and are assessed during each exam.

LEARNING SKILLS:

Graduates will be able to build on and update methodological skills and knowledge not just by selecting relevant bibliographic material (on-line and off-line), but above all through direct comparison and involvement in culturally complex and different contexts.

The learning abilities acquired are a result of the entire period of study and are assessed continuously throughout the learning period, especially in the home study activities required for each exam, individual and/or group projects and tasks leading to the final exam.

A.4. CAREER OPPORTUNITIES

This paragraph provides information on the occupational profile, functions and fields of employment available to graduates of this Programme.

Graduates will be suited to the following professional roles in the areas of employment indicated:

Anthropologist

Functions:

- holding positions of responsibility in drawing up reports and implementing and assessing policy concerning intercultural and inter-religious inclusion and mediation;
- being a consultant in matters of interculture within schools, services and socio-cultural activities, as well as in projects of international cooperation;
- planning, directing and conducting training courses and professional refresher courses on interculturalism, especially for those in the health and social services, cultural mediation, teachers and the police force;
- producing ethnographic materials and booklets as part of cultural and museum activities and services, and promoting the heritage and cultural tradition of a community.

Career opportunities:

- public, private and third sector companies and institutions, associations and organisations operating in the following sectors: social, educational, health, welfare and international cooperation services;
- cultural services (especially institutions safeguarding the local and national cultural heritage);
- cultural and ethnic tourism.

Expert in religious cultures

Functions:

- drawing up reports, implementing and assessing policy within specific contexts (e.g. prison) specifically related to inter-religious dynamics;

- being a consultant on religious matters in schools, services and socio-cultural activities, as well as in projects of international cooperation;
- planning, directing and conducting training courses and professional refresher courses on inter-religious matters, especially for those in the health and social services, cultural mediation, teachers and the police force.

Career opportunities:

- public, private and third sector companies and institutions, associations and organisations operating in the following sectors: social, educational, health, welfare and international cooperation services (in particular units overseeing immigration);
- cultural services (especially institutions safeguarding the local cultural heritage);
- international religious tourism.

The degree programme project has been submitted to selected external stakeholders in order to receive their opinions and feedbacks on the learning outcomes and the professional profiles.

A.5. OPINION OF SOCIAL PARTNERS AND POTENTIAL EMPLOYERS

This paragraph describes the outcome of the consultation with the representative employment and trade organisations.

This information is not available in English at this time.

A.6. FURTHER STUDIES

It gives access to third cycle studies (Dottorato di ricerca/Scuole di specializzazione) and master universitario di secondo livello.

B. TEACHING AND LEARNING

This section describes the updated course structure diagram (for academic year 2013/2014), with the full titles and listings of the course units and the latest published lecture timetable.

B.1. COURSE STRUCTURE DIAGRAM

The link takes you to the Study Programme course structure diagrams. You can also access to each course unit content.

- [Study plan: all course units in the programme](#)

B.2. CALENDAR AND LECTURE TIMETABLE

The links take you to the teaching calendar (exam session and final examination session) and the lecture timetable (in Italian).

- [Lecture timetable](#)
- [Exam sessions](#)
- [Final examination sessions](#)

C. RESOURCES AND SERVICES

This section provides a list of teaching staff and their relative curricula and and description of the services available to students for the academic year 2013/2014.

C.1. TEACHERS

The paragraph lists the lecturers who teach in the Study Programme: from here you can access the personal web pages of each one (in Italian). Information updated to 28 May 2013 (in Italian).

Permanent teaching staff:

Bori, Caterina	Geraci, Giovanni	Morini, Enrico	Samoggia, Alessandra
Casari, Matteo	Jourdan, Luca	Muccioli, Federicomaria	Sbardella, Francesca
Domenici, Davide	Manzoli, Giacomo	Pancaldi, Giuliano	Sirinian, Anna
Facchini, Cristiana	Marchignoli, Saverio	Pancino, Claudia	Taddia, Irma
Fadda, Michele	Mazzanti, Angela Maria	Perrone, Lorenzo	
Franceschi, Zeld Alice	Mazzone, Umberto	Quaranta, Ivo	

Contract teaching staff:

[Benenati, Giovanni Domenico](#)
[Bonetti, Roberta](#)

C.2. STUDENT SERVICES: OFFICES

C.2.1. FUTURE STUDENTS

The link take you to the webpage which provides specific information about the offices and the services for the future students (in italian).

- [Future students](#)

C.2.2. ENROLLED STUDENTS

The link take you to the webpage which provides specific information about the offices and the services for the enrolled students (in italian).

- [Enrolled students](#)

C.2.3. INTERNATIONAL STUDENTS

The links take you to the reference Work Placement and International Relations office for the Study Programme, where available.

- [International students](#)

C.2.4. GRADUATES

- [Graduates](#)

D. THE STUDY PROGRAMME IN FIGURES

Information on students' starting their university careers, how many students are in line with the regular programme, opinions of students and graduates on the teaching programmes and information concerning graduate employment.

This section provides the data of the last academic years for the Study Programme (SP) and a comparison with similar Study Programmes. The University of Bologna has divided its Study Programmes into four groups:

- **BIOMEDICAL** group: Study Programmes of the Schools of Pharmacy, Biotechnology and Sport Science; Medicine; Agriculture and Veterinary Medicine
- **SCIENTIFIC-TECHNOLOGICAL** group: Study Programmes of the Schools of Engineering and Architecture; Sciences
- **SOCIAL SCIENCES** group: Study Programmes of the Schools of Economics, Management, and Statistics; Law, Political Sciences
- **HUMANITIES** group: Study Programmes of the Schools of Arts, Humanities, and Cultural Heritage; Foreign Languages and Literatures, Interpreting and Translation; Psychology and Education

The section presents the results of the Study Programme for the last three academic years.

Main data shows how many students enrolled, the number of students assigned OEA, how many drop out after the first year, how many graduate in line with the programme schedule, the opinions of attending and graduating students on the teaching programmes and information concerning graduate employment.

The information and data presented in this section, updated to 28 May 2013, were taken from University databases and [AlmaLaurea](#).

Study Programmes may be subject to degree programme system modifications from one academic year to the next, and the data provided in this section may refer to a programme with a slightly different system to the one currently running (such as programme title, course structure diagram and list of lecturers). However, indicatively the data presents the general trend of the Study Programme over the past three years.

Most of the Study Programmes running at the University of Bologna have been reformed in compliance with DM 270/04, most of them from the academic year 2008/2009. For this reason for the previous academic years for some information, as opinion of the graduates and employment situation, are provided in the reports of those Programmes, on the paragraph D.5. refers to the Study Programmes as they were presented prior to the reform.

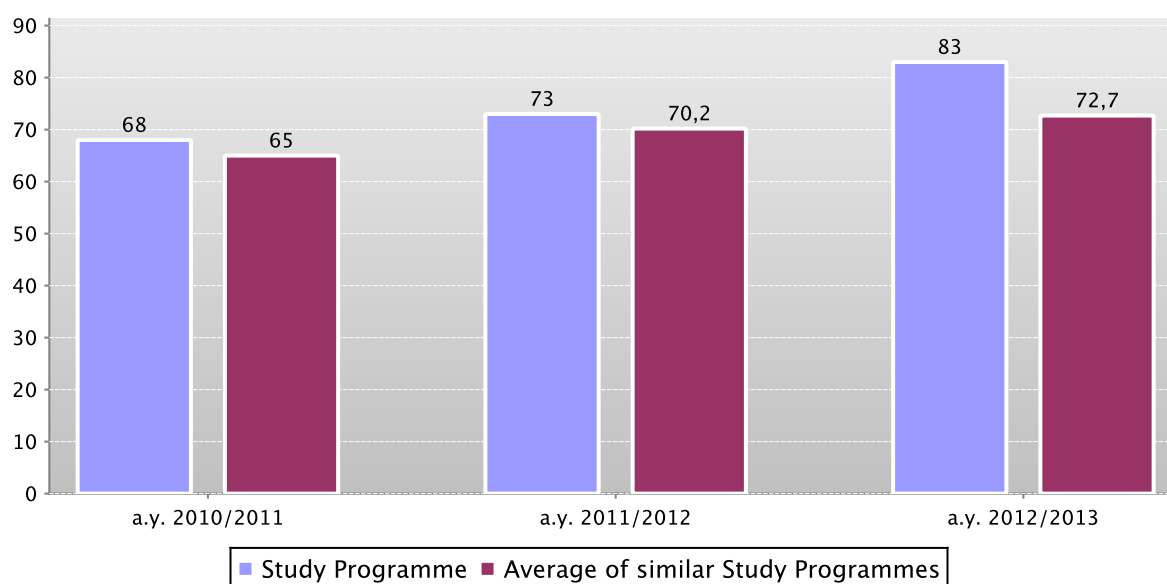
D.1. STUDENTS STARTING THEIR UNIVERSITY CAREERS

Characteristics of incoming students at the beginning of their study. Tables and graphs provide information on number of enrolled students (*new careers*), focusing on the characteristics of students and results of any entrance tests.

D.1.1. ENROLMENTS

The **graph** and the **table** show the number of **new careers** of the Study Programme compared with the **average of similar Study Programmes** (which belong to the same group), for the indicated academic years.

New careers



	a.y. 2010/2011		a.y. 2011/2012		a.y. 2012/2013	
	New careers	Total N. enrolled students	New careers	Total N. enrolled students	New careers	Total N. enrolled students
Study Programme	68	214	73	206	83	204
Average of similar Study Programmes	65	87,4	70,2	88	72,7	91,1

D.1.2. ADDITIONAL DATA ON STUDENTS' STARTING THEIR UNIVERSITY CAREERS

D.1.2.1. CANDIDATES REGISTERED FOR THE ENTRANCE EXAM

In academic year 2012/2013 access to this Study Programme was not restricted.

D.1.2.2. INCOMING STUDENTS

Geographic origin, type of 1st cycle degree, age and gender of students.

The data shows a homogeneous group of students (**cohort**) which started together their academic career.

Students which have **passed** to an other Study Programme, **transferred** from an other university, or registered to a 2nd degree are not included.

The **tables** show the number, geographic origin, gender, age, type and grade of 1st cycle degree of students enrolling in the degree programme.

The Study Programme data is compared with the average of similar Study Programmes (which belong to the same group), for the indicated academic years.

		New careers	Geographic origin						Gender		Average age of new career students		
			Students coming from the province of the Study Programme site	Students coming from other provinces where Unibo has a site	Students coming from other provinces of Emilia Romagna region	Students coming from other Italian regions	Students coming from abroad	Not available	M	F	22 or less	23 - 24	25 or more
Students 2010/2011	Study Programme	68	19,1%	1,5%	7,4%	70,6%	1,5%		25,0%	75,0%	13,2%	50,0%	36,8%
	Average of similar Study Programmes	65	19,7%	11,7%	11,2%	54,2%	3,3%		26,1%	73,9%	24,3%	44,6%	31,1%
Students 2011/2012	Study Programme	73	19,2%	5,5%	8,2%	65,8%	1,4%		31,5%	68,5%	16,4%	34,2%	49,3%
	Average of similar Study Programmes	70,2	19,4%	12,9%	11,8%	52,3%	3,7%	0,0%	24,8%	75,2%	25,1%	43,7%	31,2%
Students 2012/2013	Study Programme	83	18,1%	9,6%	6,0%	63,9%	2,4%		25,3%	74,7%	15,7%	44,6%	39,8%
	Average of similar Study Programmes	72,7	17,8%	11,4%	11,2%	55,3%	4,2%		24,5%	75,5%	26,7%	45,5%	27,9%

		First Cycle Degree: University of previous studies				First Cycle Degree: more frequent class		First Cycle Degree: grade					
		University of Bologna	Other Italian Universities	Foreign University	Other not defined	Class code and name	% of students	First Cycle Degree grade between 66 and 90	First Cycle Degree grade between 91 and 100	First Cycle Degree grade between 101 and 105	First Cycle Degree grade between 106 and 110	First Cycle Degree grade 110 and honors	First Cycle Degree grade not available
Students 2010/2011	Study Programme	60,3%	16,2%		23,5%	29 FILOSOFIA	47,1%	2,9%	14,7%	20,6%	26,5%	11,8%	23,5%
	Average of similar Study Programmes	56,4%	30,8%	1,6%	11,2%	0 SENZA CLASSE	18,3%	4,2%	22,3%	21,2%	22,7%	18,6%	11,0%
Students 2011/2012	Study Programme	54,8%	12,3%	2,7%	30,1%	0 SENZA CLASSE	39,7%	4,1%	16,4%	15,1%	20,5%	13,7%	30,1%
	Average of similar Study Programmes	54,8%	22,6%	2,1%	20,5%	0 SENZA CLASSE	26,4%	4,9%	19,4%	19,4%	21,1%	15,4%	19,9%
Students 2012/2013	Study Programme	57,8%	34,9%		7,2%	L-42 STORIA	25,3%	6,0%	16,9%	24,1%	25,3%	21,7%	6,0%
	Average of similar Study Programmes	51,5%	40,8%	2,6%	5,1%	0 SENZA CLASSE	13,0%	4,4%	24,6%	22,0%	27,3%	17,5%	4,2%

D.2. REGULARITY OF STUDIES

Insight into the regularity with which the students pass their exams. The graphs and the tables provide information on the number of students who leave the programme between the first and second year and the number of regular graduates, focusing on the number of credits obtained at the end of the first year, on the exams passed and average grade achieved for each course unit.

D.2.1. STUDENTS LEAVING THE PROGRAMME BETWEEN YEARS 1 AND 2

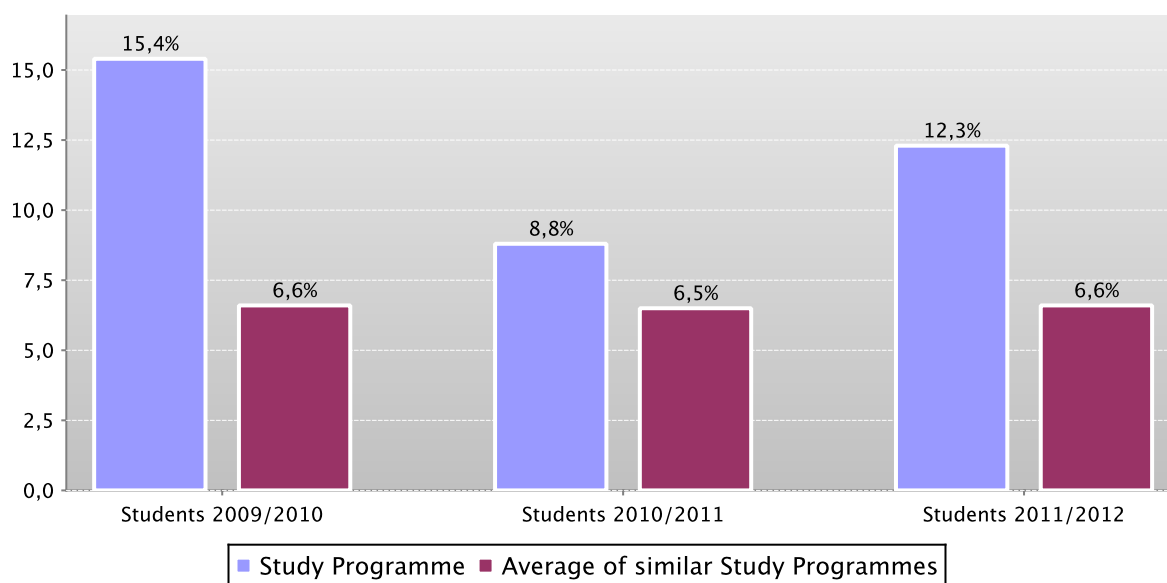
Here the number of students leaving the Study Programme is shown.

The **graph** shows the percentage of students who leave the programme after the first year compared to the **average of similar Study Programmes** (belonging to the same group).

The **table** shows the registered students (**new careers**), the percentage of students leaving the programme who **pass** to a different Study Programme in the same university, **transfer** to another university or **withdraw** from studies as well as the enrolled **repeating** students and those enrolled in the second year.

The Study Programme data is compared with the **average of similar Study Programmes** (which belong to the same group), for students registered (**new careers**) in the indicated academic years.

Percentage of withdrawals between years 1 and 2



		New careers	% withdrawals	% passages and transfers	% repeating students	Students enrolled in the second year
Students 2009/2010	Study Programme	65	15,4%	0,0%	0,0%	55
	Average of similar Study Programmes	60,9	6,6%	1,3%	0,0%	56,1
Students 2010/2011	Study Programme	68	8,8%	1,5%	0,0%	61
	Average of similar Study Programmes	65	6,5%	1,1%	0,0%	60
Students 2011/2012	Study Programme	73	12,3%	1,4%	0,0%	63
	Average of similar Study Programmes	70,2	6,6%	1,4%	0,0%	64,5

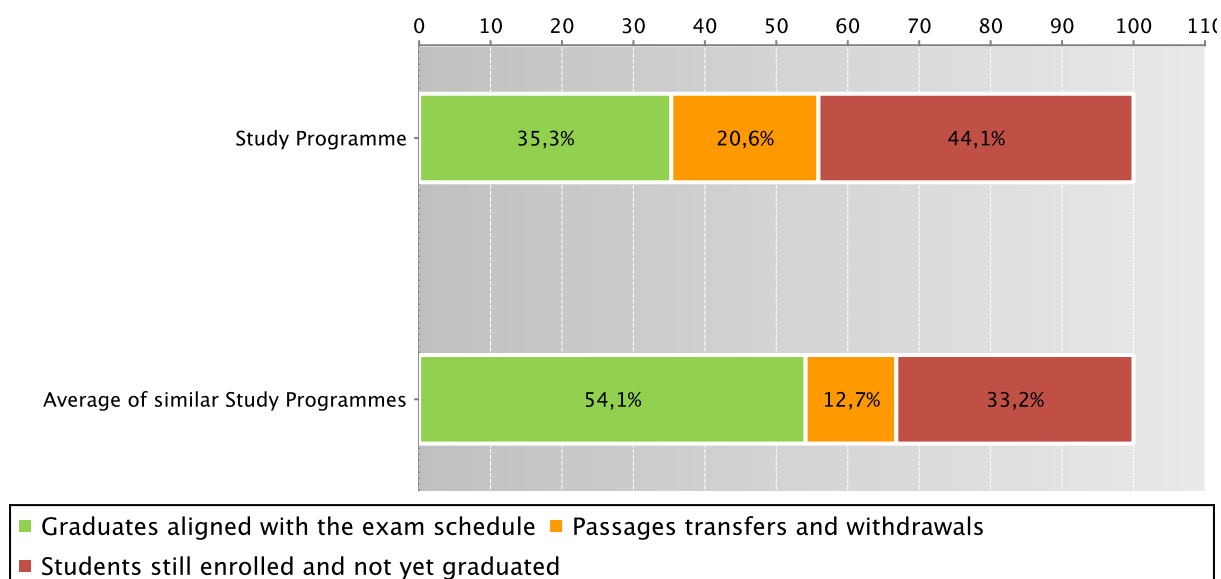
D.2.2. REGULAR GRADUATES

Here you will find information on regular graduates, on how many students, at the end of the regular programme duration, left the programme and how many are still enrolled but **not aligned to the exam schedule**.

The **graph** and the **table** show the situation concerning the **registered students (new careers)** for the indicated academic year, at the end of the regular duration of the Study Programme, highlighting the percentage of regular graduates, the number of students still enrolled (**not aligned to the exam schedule** and **repeating** students), students who have left the programme (including **passages, transfers** and **withdrawals**).

The Study Programme data is compared with the **average of similar Study Programmes** (which belong to the same group), for students enrolled in the indicated academic year.

Situation of students 2010/2011 at the end of regular duration of the study programme



		New careers	Regular graduates		Passages transfers and withdrawals		Students still enrolled and not yet graduated	
		N.	%	N.	%	N.	%	
Students 2008/2009	Study Programme	107	28	26,2%	17	15,9%	62	57,9%
	Average of similar Study Programmes	67,9	31,3	46,1%	8,9	13,1%	27,8	40,9%
Students 2009/2010	Study Programme	65	29	44,6%	12	18,5%	24	36,9%
	Average of similar Study Programmes	60,9	32,1	52,6%	7,2	11,8%	21,6	35,5%
Students 2010/2011	Study Programme	68	24	35,3%	14	20,6%	30	44,1%
	Average of similar Study Programmes	65	35,2	54,1%	8,3	12,7%	21,5	33,2%

D.2.3. ADDITIONAL DATA ON REGULARITY OF STUDIES

D.2.3.1. CREDITS OBTAINED BY STUDENTS IN THE 1ST YEAR

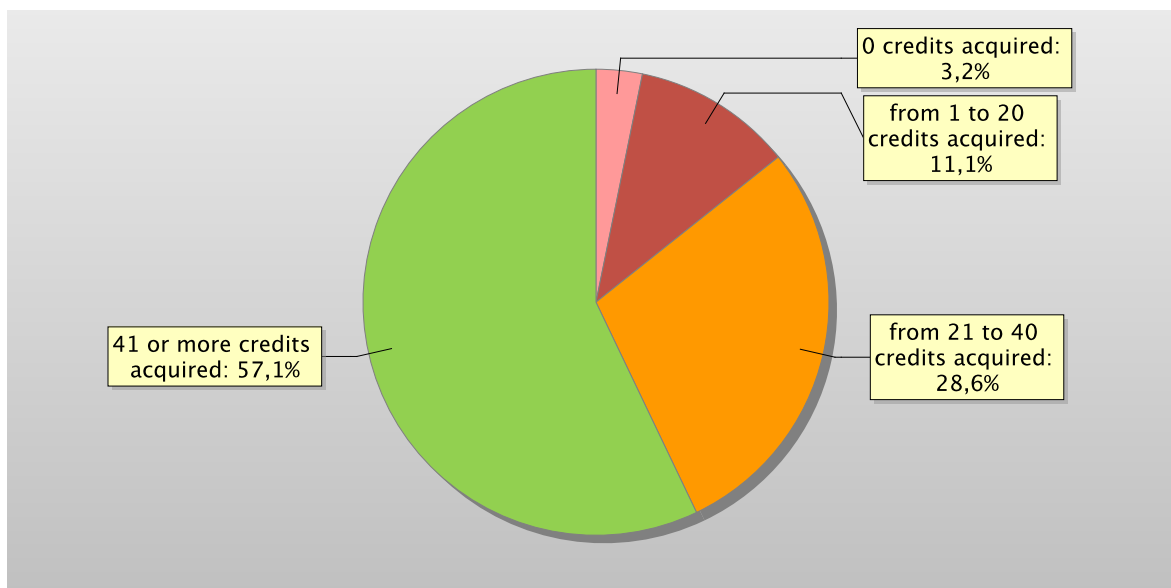
This offers an insight into how regularly students pass their exams.

The **graph** shows the distribution of the students according to the number of **credits** obtained at the end of the first year.

In addition, the **table** shows the number of students registered at the second year and average **credits** obtained during the first year.

The Study Programme data is compared with the **average of similar Study Programmes** (which belong to the same group), for students registered in the indicated academic years.

Distribution of the students in 2011/2012 according to the number of credits obtained at the end of the first year*



		Students enrolled in the 2nd year	% students with *				Average credits per student
			0 credits acquired	from 1 to 20 credits acquired	from 21 to 40 credits acquired	41 or more credits acquired	
Students 2009/2010	Study Programme	55	3,6%	3,6%	27,3%	65,5%	42,3
	Average of similar Study Programmes	56,1	4,4%	12,6%	32,7%	50,3%	38,7
Students 2010/2011	Study Programme	61	4,9%	24,6%	34,4%	36,1%	31
	Average of similar Study Programmes	60	3,5%	9,4%	28,9%	58,2%	41,7
Students 2011/2012	Study Programme	63	3,2%	11,1%	28,6%	57,1%	38,6
	Average of similar Study Programmes	64,5	3,2%	9,8%	31,4%	55,7%	40,7

*Note: by convention, credits are considered to be obtained by students by 31st October of the year following the year of enrolment.

D.2.3.2. EXAMS PASSED AND AVERAGE GRADE

The **table** shows number of exams passed and average grade achieved for each course unit in the calendar year 2011. Marks for the exams passed are expressed out of thirty.

The data refers to the course unit code and therefore includes the various branches of the programme divided into channels or sub-groups, divided by letter.

It considers all subjects for which a grade is assigned, and therefore excludes all those to which a pass/fail score is allocated.

The data concerning previous programmes is given in a separate section.

Data of the Study Programme D.M. 270/04 Antropologia culturale ed etnologia (code 0964)

	N. of exams passed	Average grade *
27853 FORME AUDIOVISIVE DELLA CULTURA POPOLARE (1) (LM)	45	28,4
27867 CINEMA E STUDI CULTURALI (1) (LM)	6	28
28230 TEORIE E STORIA DELL'ANTROPOLOGIA (LM)	23	28
28234 ANTROPOLOGIA DEI SISTEMI RELIGIOSI (LM)	92	28,9
28243 ANTROPOLOGIA MUSEALE (1) (LM)	35	29,2
28252 STORIA SOCIALE (1) (LM)	28	28,9
28260 RELIGIONI E SOCIETÀ (LM)	1	
28263 STORIA DEL CRISTIANESIMO (LM)	33	29
28267 STORIA DEL CRISTIANESIMO ANTICO (LM)	2	
28271 STORIA DELLE CHIESE E DEI MOVIMENTI RELIGIOSI (LM)	42	29,6
28278 STORIA ELLENISTICA (1) (LM)	1	

	N. of exams passed	Average grade *
28284 STUDI SOCIALI DELLE SCIENZE (1) (LM)	14	29,5
28287 DEMOGRAFIA (1) (LM)	2	
28303 ERGONOMIA DEI PROCESSI COGNITIVI (1) (LM)	4	
28304 ANTROPOLOGIA APPLICATA (1) (LM)	40	29,7
28337 STORIA DELLE RELIGIONI (1) (LM)	8	27,6
28339 EBRAICO (1) (LM)	1	
28341 ISLAMISTICA (1) (LM)	2	
28342 LINGUA E LETTERATURA ARABA I (1) (LM)	31	29,1
28343 LINGUA E LETTERATURA ARMENA I (1) (LM)	22	28,3
28344 LINGUA E LETTERATURA SANSCRITA I (1) (LM)	17	26,9
28346 ANTROPOLOGIA DEL CORPO E DELLA MALATTIA (LM)	53	29,1
28347 ANTROPOLOGIA DEI PROCESSI POLITICI (LM)	99	28,6
28353 STORIA DEL CRISTIANESIMO (1) (LM)	3	
28953 LETTERATURA CRISTIANA ANTICA (1) (LM)	1	
29446 STORIA DELL'IMPERO ROMANO (1) (LM)	2	
30737 TEORIE E STORIA DELL'ANTROPOLOGIA (1) (LM)	49	28,5
30774 TEORIA E PRATICA DELLA FORMAZIONE (1) (LM)	1	
30879 STORIA DELLE CHIESE IN ORIENTE (1) (LM)	2	
31592 ANTROPOLOGIA E MODELLI SOCIALI (1) (LM)	4	
33691 TEATRI ORIENTALI (1) (LM)	10	29,6
37618 STORIA DELL'EBRAISMO MODERNO E CONTEMPORANEO (LM)	1	
39426 ANTROPOLOGIA STORICA (1) (LM)	26	29,4

* Note: no average grade is given if the number of exams passed is less than or equal to 5.

D.3. OPINIONS OF GRADUATES AND ATTENDING STUDENTS

Opinions of graduates on the Study Programme.

Tables and graphs provide information on the number of graduates who expressed positive opinions on the Study Programme, focusing on opinions expressed by attending students on course units.

D.3.1. OPINION OF GRADUATES

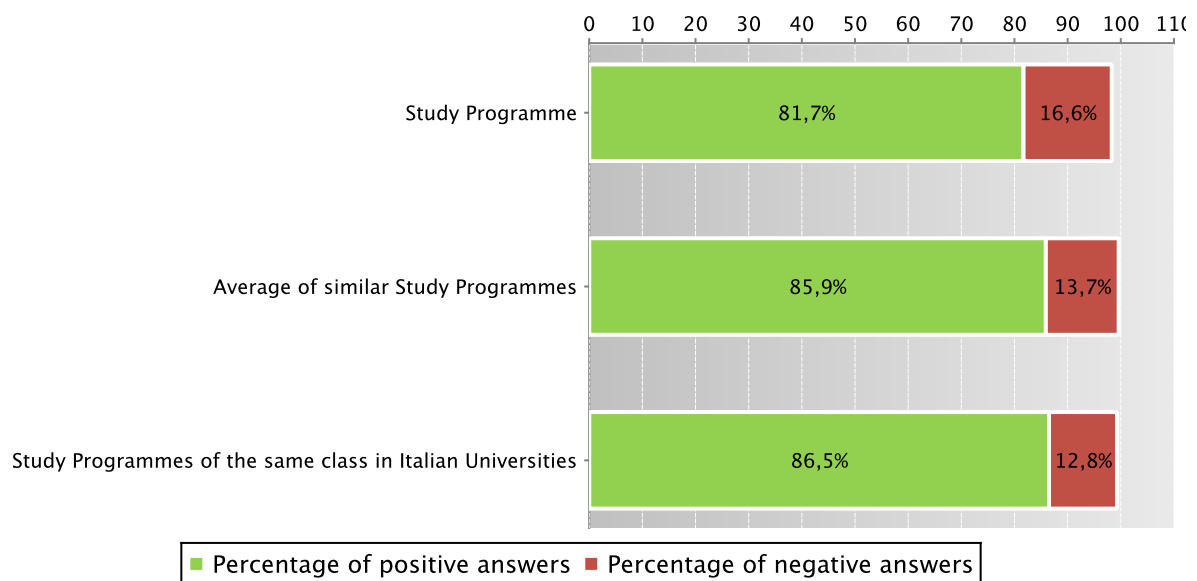
The **graph** shows the percentage of graduates (AlmaLaurea survey) who responded positively to the question: “**Are you generally satisfied with the Study Programme**”.

In addition, the **table** shows the percentage of students who answered “Yes, to the same programme at the university” to the question “Would you register again to the university?”.

The Study Programme data is compared with the **average of similar Study Programmes (which belong to the same group)**, and the average of Study Programmes of the same **class** of other Italian universities for the graduates of the indicated years.

Graduates in 2012 who responded positively to the question: “Are you generally satisfied with this Study Programme?”

Data of the Study Programme D.M. 270/04 Antropologia culturale ed etnologia (code 0964)



		N. graduates	Completed Questionnaires	% of positive answers to the question: "Are you generally satisfied with this Study Programme?"	% of answers "yes to the same Programme in the same University" to the question "Would you register again to the University"
2010	Study Programme	10	6	100,0%	83,3%
	Average of similar Study Programmes	24,4	21,3	83,1%	69,6%
	Study Programmes of the same class in Italian Universities	37	25	76,0%	76,0%
2011	Study Programme	56	49	83,7%	53,1%
	Average of similar Study Programmes	29,3	25,9	84,9%	69,7%
	Study Programmes of the same class in Italian Universities	146	127	85,0%	63,8%
2012	Study Programme	71	60	81,7%	60,0%
	Average of similar Study Programmes	32,8	29,6	85,9%	71,9%
	Study Programmes of the same class in Italian Universities	166	148	86,5%	63,5%

Symbols:

(*) The opinions of the Study Programmes with less than 5 graduates are not shown.

Further information on [Graduates' Profile Report](#).

D.3.2 ADDITIONAL DATA ON OPINIONS OF STUDENTS

D.3.2.1. OPINION OF ATTENDING STUDENTS

The **graph** shows the percentage of attending students who responded positively to the question in the questionnaire: “Are you generally satisfied with this course unit?” in academic year 2011/2012.

The **table** also shows the number of completed questionnaires.

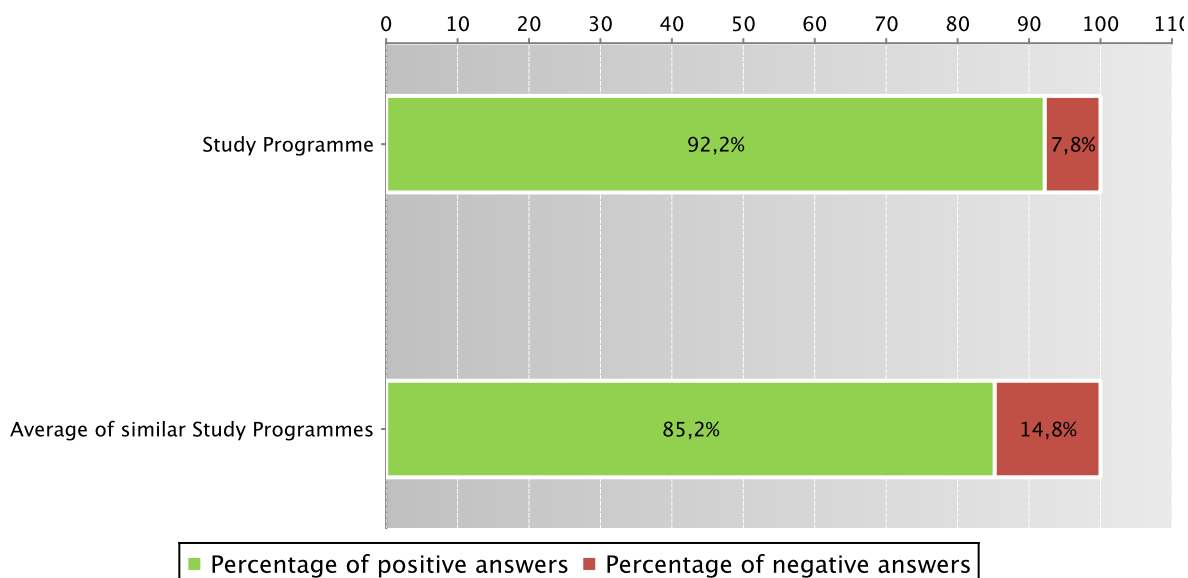
The Study Programme data is compared with the **average of similar Study Programmes** (which belong to the same group), for the indicated academic years.

The data concerning the students' opinion refers to the opinions of those attending lessons, whether they are enrolled in the current programme or a Study Programme running under pre-reform regulations (under D.M. 509).

For the University of Bologna the survey and subsequently analysis of the opinions of students attending the course is cared by *Aform* - Quality Assurance Department and *Arug* - Support Planning and Evaluation Department. The overall results and the methods of collection and analysis are described in the document published online on the [Statistical Observatory of the University of Bologna](#) (see the note in the glossary).

Students who responded positively to the question: “Are you generally satisfied with this course unit?” in academic year 2011/2012

Data of the Study Programme D.M. 270/04 Antropologia culturale ed etnologia (code 0964) and of the Study Programme D.M. 509/99 Antropologia culturale ed etnologia (code 0433)



Data of the Study Programme D.M. 270/04 *Antropologia culturale ed etnologia* (code 0964) and of the Study Programme D.M. 509/99 *Antropologia culturale ed etnologia* (code 0433)

		Number of completed questionnaires	% of positive answers concerning the general satisfaction with the course unit – Question 19
a.y. 2009/2010	Study Programme	237	87,2%
	Average of similar Study Programmes	346,9	85,9%
a.y. 2010/2011	Study Programme	177	89,8%
	Average of similar Study Programmes	344,5	85,2%
a.y. 2011/2012	Study Programme	221	92,2%
	Average of similar Study Programmes	436,7	85,2%

Symbols:

(*) When there is a small number of questionnaires, the percentage of positive opinions on overall satisfaction is not presented. Further information on [Rapporto Opinione degli studenti frequentanti sulle attività didattiche](#) (the content is in Italian).

D.4. ENTRY INTO THE WORLD OF WORK

Employment situation of graduates of the Study Programme.

Tables and graphs provide information on the employment situation of graduates one year after graduating.

D.4.1. EMPLOYMENT SITUATION

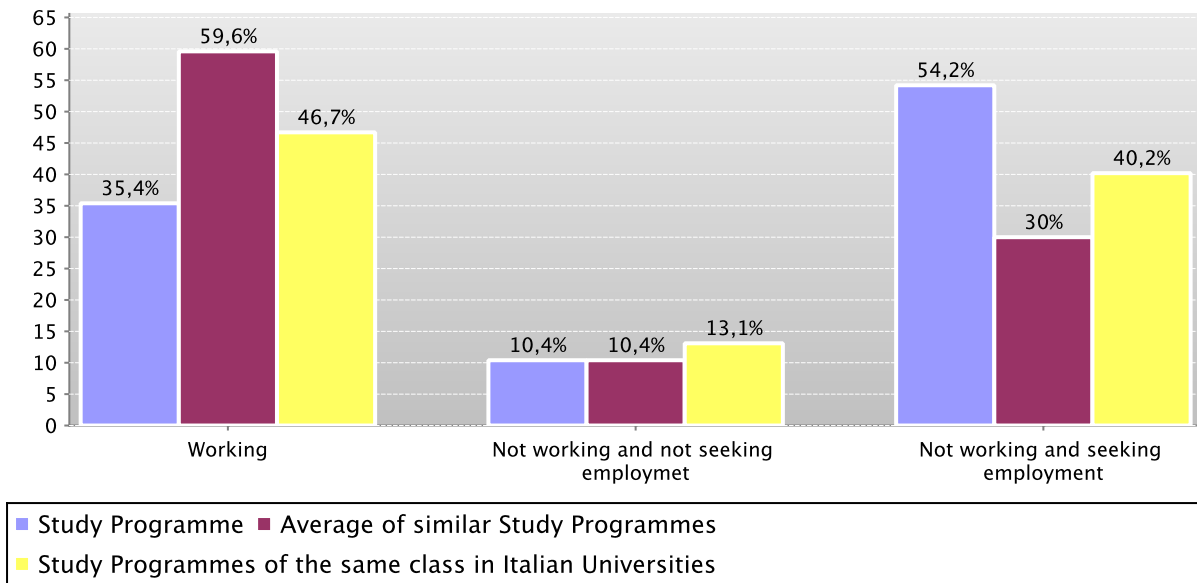
The paragraph shows the employment situation of graduates one year after graduating.

The data is taken from the [AlmaLaurea](#) reports on the employment situation of graduates.

The **graph** shows who is working, who is not working and is not seeking employment, who is not working but is seeking employment. In addition, the **table** shows the number of graduates interviewed, the number involved in internships and traineeships and the appropriateness of their degree to the job.

The Study Programme data is compared with the [average of similar Study Programmes \(which belong to the same group\)](#) and the average of Study Programmes of the same [class](#) of other Italian universities for the graduates of the indicated years.

Employment situation of graduates in 2011 one year after graduating



		N. graduates interviewed	Employment situation (1)			Not working, not seeking employment, but following a university programme/traineeship (2)	Degree's appropriateness for the job (referred to the graduates who just work) (3)	
			Working	Not working and not seeking employment	Not working and seeking employment		Effective / very effective	Quite effective
Graduation Year 2010	Study Programme	8	12,5%	37,5%	50,0%	37,5%		
	Average of similar Study Programmes	21,6	55,0%	15,8%	29,3%	7,6%	34,9%	29,1%
	Study Programmes of the same class in Italian Universities	31	35,5%	19,4%	45,2%	16,1%	40,0%	40,0%
Graduation Year 2011	Study Programme	48	35,4%	10,4%	54,2%	4,2%	35,3%	11,8%
	Average of similar Study Programmes	24,7	59,6%	10,4%	30,0%	5,1%	34,5%	29,2%
	Study Programmes of the same class in Italian Universities	122	46,7%	13,1%	40,2%	6,6%	28,6%	25,0%

Symbols:

(*) The opinions of the Study Programmes with less than 5 graduates are not shown.

Notes on the AlmaLaurea report on the employment situation of graduates

(1) "Employment situation": the definition includes the number of employed graduates who declaring to carry out a paid work activity, provided that is not training activity (internship, traineeship, PhD degrees, specialization schools).

(2) "Number of those who do not work, who are not seeking employment but who are following a university programme/traineeship": the definition includes those who are enrolled in traineeships, PhD degrees, specialisation schools, Italian "master universitari" (first and second level). The presentation of this data complies with article 2 of D.M. 544 of 31st October 2007, as later provided for in Management Decree no. 61 of 10th June 2008 (transparency requirements).

(3) The evaluation of the appropriateness of the degree is obtained by a combination of the requirement of the relative qualification for the job held and the level of usage of the skills learned at university.

Further information on [Graduates' Employment report](#).

See data of previous academic years – Study Programme D.M. 509/99 Cultural Anthropology and Ethnology (code 0433) [paragraph D.5.4.1](#).

D.5. INFORMATION ON PRE-REFORM PROGRAMMES (DM 509/99)

D.5.1. STUDENTS STARTING THEIR UNIVERSITY CAREERS

Characteristics of incoming students at the beginning of their study. Tables and graphs provide information on number of enrolled students (new careers), focusing on the characteristics of students.

D.5.1.1. ENROLMENTS

Data of enrolments of the last three academic years are shown in paragraph [D.1.1](#).

D.5.1.2. ADDITIONAL DATA ON STUDENTS' STARTING THEIR UNIVERSITY CAREERS

D.5.1.2.1. CANDIDATES REGISTERED FOR THE ENTRANCE EXAM

Data of candidates registered for the entrance exam are shown in paragraph [D.1.2.1](#).

D.5.1.2.2. INCOMING STUDENTS

Data of incoming students of the last three academic years are shown in paragraph [D.1.2.2](#).

D.5.2. REGULARITY OF STUDIES

Insight into the regularity with which the students pass their exams.

Graphs and tables provide information on the number of students who leave the programme after the first year and the number of regular graduates, focusing on the number of credits obtained at the end of the first year, number of exams passed and the average grade achieved for each course unit.

D.5.2.1. STUDENTS LEAVING THE PROGRAMME BETWEEN YEARS 1 AND 2

Data of students leaving the Study Programme of the last three academic years are shown in paragraph [D.2.1](#).

D.5.2.2. REGULAR GRADUATES

Data of regular graduates of the last three academic years are shown in paragraph [D.2.2](#).

D.5.2.3. ADDITIONAL DATA ON REGULARITY OF STUDIES

D.5.2.3.1. CREDITS OBTAINED BY STUDENTS IN THE 1ST YEAR

Data of credits obtained by students in the 1st year of the last three academic years are shown in paragraph [D.2.3.1](#).

D.5.2.3.2. EXAMS PASSED AND AVERAGE GRADE

Data of exams passed and average grade are shown in paragraph [D.2.3.2](#).

D.5.3. OPINIONS OF ATTENDING STUDENTS AND GRADUATES

Opinions of graduates on the Study Programme.

Tables and graphs provide information on the number of graduates who expressed positive opinions on the Study Programme, focusing on opinions expressed by attending students on course units.

D.5.3.1. OPINION OF GRADUATES

Data of opinion of graduates are shown in paragraph [D.3.1](#).

D.5.3.2. ADDITIONAL DATA ON OPINIONS OF STUDENTS

D.5.3.2.1. OPINION OF ATTENDING STUDENTS

Data of opinion of attending students of the last three academic years are shown in paragraph [D.3.2.1](#).

D.5.4. ENTRY INTO THE WORLD OF WORK

Employment situation of graduates of the Study Programme.

Tables and graphs provide information on the employment situation of graduates one year after graduating.

D.5.4.1. EMPLOYMENT SITUATION

The paragraph shows the employment situation of graduates one year after graduating.

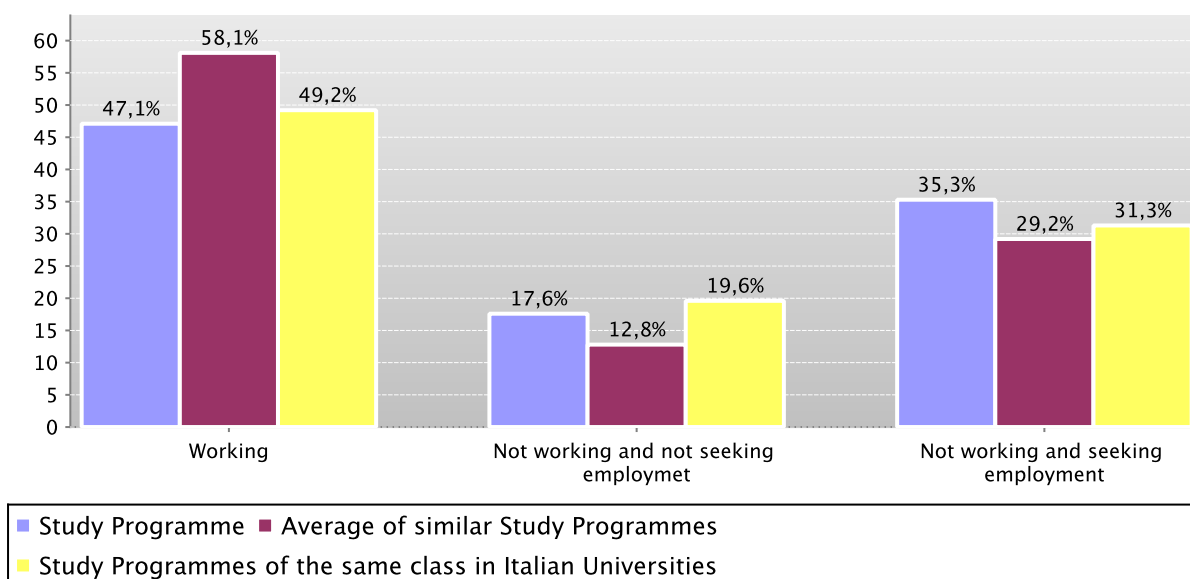
The data is taken from the [AlmaLaurea](#) reports on the employment situation of graduates.

The **graph** shows who is working, who is not working and is not seeking employment, who is not working but is seeking employment. In addition, the **table** shows the number of graduates interviewed, the number involved in internships and traineeships and the appropriateness of their degree to the job.

The Study Programme data is compared with the [average of similar Study Programmes \(which belong to the same group\)](#) and the average of Study Programmes of the same [class](#) of other Italian universities for the graduates of the indicated years.

Employment situation of graduates in 2009 one year after graduating

Data of the Study Programme D.M. 509/99 Cultural Anthropology and Ethnology (code 0433)



Data of the Study Programme D.M. 509/99 Cultural Anthropology and Ethnology (code 0433)

	N. graduates interviewed	Employment situation (1)			Not working, not seeking employment, but following a university programme/traineeship (2)	Degree's appropriateness for the job (referred to the graduates who just work) (3)	
		Working	Not working and not seeking employment	Not working and seeking employment		Effective / very effective	Quite effective
Study Programme	51	47,1%	17,6%	35,3%	3,9%	21,7%	30,4%
Average of similar Study Programmes	43,4	58,1%	12,8%	29,2%	5,6%	34,9%	33,8%
Graduation Year 2009 Study Programmes of the same class in Italian Universities	179	49,2%	19,6%	31,3%	9,5%	18,6%	24,4%

Symbols:

(*) The opinions of the Study Programmes with less than 5 graduates are not shown.

Notes on the AlmaLaurea report on the employment situation of graduates

(1) "Employment situation": the definition includes the number of employed graduates who declaring to carry out a paid work activity, provided that is not training activity (internship, traineeship, PhD degrees, specialization schools).

(2) "Number of those who do not work, who are not seeking employment but who are following a university programme/traineeship": the definition includes those who are enrolled in traineeships, PhD degrees, specialisation schools, Italian "master universitari" (first and second level). The presentation of this data complies with article 2 of D.M. 544 of 31st October 2007, as later provided for in Management Decree no. 61 of 10th June 2008 (transparency requirements).

(3) The evaluation of the appropriateness of the degree is obtained by a combination of the requirement of the relative qualification for the job held and the level of usage of the skills learned at university.

Further information on [Graduates' Employment report](#).

Go back to [D.4.1. Employment situation](#)

E. FIND OUT MORE: THE QUALITY OF YOUR STUDY PROGRAMME

The University of Bologna has identified its objectives as the *personal, cultural and professional growth of students and the improvement of the quality of learning, also in relation to the needs of society* (Strategic Plan 2010-2013).

Students, employers and society as a whole, have the right to effective learning for individual and intellectual growth, to develop critical sense and to prepare for the world of work.

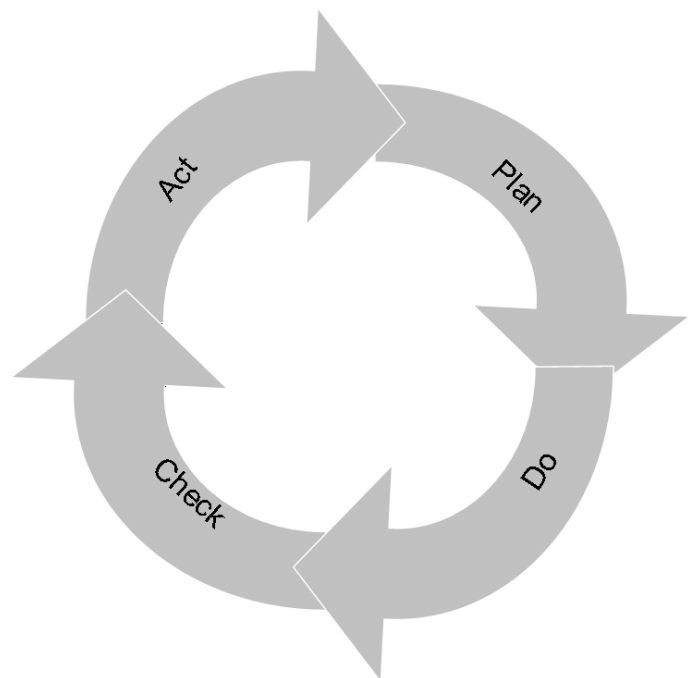
In the Statute and the Strategic Plan 2010-2013 the University of Bologna acknowledges its responsibility in guaranteeing the quality of its study programmes, and for this purpose adopts an "internal quality assurance system".

The Internal Quality Assurance system

The internal quality assurance system is a set of processes and responsibilities adopted to guarantee the quality of Study Programmes at the University of Bologna.

The guarantee of the quality of a Study Programme is the correspondence of the results achieved with the set objectives, in the following phases:

- Plan: defining the objectives
- Do: implementing the planned actions
- Check: checking that the objectives have been achieved
- Act: planning improvement action



This path responds to the expectations of students, guides teaching behaviour and provides indicators for the assessment of results. Self-assessment is based on the analysis of significant data (for example, the number of students graduating in line with the exam schedule, students' opinions and the employment rates of graduates) and highlights strengths and weaknesses in order to reflect on the achieved results, critically consider one's own working methods and take steps for the continual improvement of the Programme. This path involves all educational stakeholders, including students, in order to make use of the contributions of everyone with first-hand knowledge of the Study Programme. Improvement is therefore a day to day development, concerning all aspects of teaching: from the lesson timetable to the publication of on-line programmes, from classroom management to exam methods, and the actual design of the Programme.

This is what happens in each phase:

- **Planning:** the Study Programme is the result of a proposal from the teaching structures and approved by the Academic Bodies.
- **Management:** Schools, Departments and Study Programmes manage the activities required to ensure teaching. The activities are organised as follows:

What we do	Who does what				
	Professors	Study Programme	Schools	Departments	General Administration
Teaching calendar, lessons programme and exam schedules			x		
Management of financial resources			x	x	
Classroom teaching	x				
Management of classrooms and laboratories			x	x	
Libraries and study rooms			x	x	
Approval of individual study plans		x			
Communication and information		x	x		Academic Affairs Division
Guidance service		x	x		Academic Affairs Division
Internships		x	x		Academic Affairs Division
Administrative services: Student Administration Office					Academic Affairs Division
Administration services: Degree programme office			x		Academic Affairs Division
Study grants and loans ad honorem					Academic Affairs Division
Student mobility: university subsidies and programmes					International Relations Division
Mobility: study grants for dissertations abroad			x		
Mobility: authorisations and recognitions		x			
Other students support services		x	x		x

- Internal assessment:** every Study Programme periodically assesses its own results, evaluating, for example, the number of enrolled students, the number of withdrawing students, student opinions etc.; in this way, the strengths and weaknesses, as well as any implemented improvement actions, are highlighted. This phase is organised as follows:

What we do	Who does what
<p>Definition, gathering and publication of evaluation data According to the general guidelines of the University and national and international standards, are defined the tools through which should be evaluated the results (indicators). The survey data to be evaluate are published every year on the Report of the Study Program.</p>	Academic Bodies
<p>Self-Assessment The Schools and Study Programmes assess the effectiveness of the previously adopted solutions, analyse the progress of their learning activities and draw up proposals for improvement.</p>	Schools and Study Programmes
<p>Internal audit</p> <p>The results of the self-assessment process are reviewed in the following phases:</p> <ul style="list-style-type: none"> • Analysis: the University Quality Manager analyses the review documents, considering the ability to identify problems, propose solutions and the overall development of the internal quality assurance system. • Review: The observations on the results obtained and the good practices adopted are examined together with the persons in charge of the Schools and Study Programmes in meetings organised by scientific-disciplinary field. The persons in charge receive the observations and inputs on the areas for development and the actions to be adopted in future to improve results. • Sharing: the conclusions of the review activities are submitted to the Academic Bodies and the University Evaluation Board. 	<p>Quality Manager</p> <p>Vice Rector for Teaching and Education</p> <p>Academic Bodies</p>
<ul style="list-style-type: none"> • Improvement: on the basis of the results of the internal audit, the Schools and Study Programmes plan improvement activities, to ensure that the Study Programmes increasingly respond to the needs of society. The cycle then starts over again, with the definition of actions to be implemented, the results of which are in turn verified, in a continuous path that guarantees the quality of education. 	

F. GLOSSARY TERMS

Additional Learning Requirements

Students enrolling in the first year of a first cycle or single cycle degree and who, following the results of the entrance exams established for each study programme, do not possess the knowledge required for access to the programme, are assigned additional learning requirements (OFA).

The OFA are fulfilled by passing an assessment test defined by the programme.

The non-fulfilment of the requirements by the date set by the Academic Bodies and published on the University Portal will lead to the re-enrolment in the first year of the programme.

AlmaLaurea

AlmaLaurea is an innovative in-line database service of graduates' curriculum vitae (1,620,000 CVs, from 53 Italian universities as of 05/07/2012), which offers a link between graduates, universities and businesses.

Created in 1994 on the initiative of the Statistical Observatory of the University of Bologna, managed by a consortium of Italian universities with the support of the Ministry of Education, University and Research, the purpose AlmaLaurea is to act as a point of contact between businesses and graduates, a reference within universities for anyone (students, businesses, etc...) working in the field of university studies, employment and the condition of young people at different levels.

Average of similar study programmes (belonging to the same group)

Average of the Study Programmes (which belong to the subject group)

Calculated average which refers to all study programmes of the same cycle which belong to the subject group.

There are four groups, composed as follows:

- **BIOMEDICAL** group: Study Programmes of the Schools of Pharmacy, Biotechnology and Sport Science; Medicine; Agriculture and Veterinary Medicine
- **SCIENTIFIC-TECHNOLOGICAL** group: Study Programmes of the Schools of Engineering and Architecture; Sciences
- **SOCIAL SCIENCES** group: Study Programmes of the Schools of Economics, Management, and Statistics; Law, Political Sciences
- **HUMANITIES** group: Study Programmes of the Schools of Arts, Humanities, and Cultural Heritage; Foreign Languages and Literatures, Interpreting and Translation; Psychology and Education

CFU University Learning Credits

University Learning Credits (CFU) were introduced under Italian Ministerial Decree no. 509/99 to comply with European legislation, and are a measurement of the volume of learning, including individual study, required of students; generally 1 CFU corresponds to 25 hours of a student's "overall learning effort".

Class

Degree classes group together study programmes of the same level and with the same key learning outcomes and available learning activities for a given number of credits and in sectors which are identified as indispensable. The features of the classes are set nationally, by Ministerial Decree, and are therefore common to all universities.

Cohort

Cohort refers to a group of students enrolled in the same academic year.

Enrolment status

In terms of enrolment, students may be:

- **Regularly enrolled:** students enrolled for as many or fewer years than the legal duration of the study programme, who do not fall into any of the following categories;
- **Not aligned with the exam schedule:** students who, without having graduated, have enrolled in all the years of the study programme and which, for programmes with compulsory attendance, have obtained all attendance certificates;
- **Repeating:** students re-enrolling in the same year of a programme again. Starting from academic year 2009-2010, students who have not fulfilled the assigned additional learning requirements within the deadline have to enrol in the 1st year as repeating students.

Entrance exam

Enrolment in a study programme may be free access or restricted access.

For all programmes with restricted access, candidates are required to sit an entrance exam and there are a limited number of places available. The entrance exam is a test which is used to draw up a graded list of candidates; students may enrol in the programme according to their place in the list. The methods of managing the call for applications and the list of candidates, including the methods for filling any unclaimed places, may vary from year to year. The test may be specific to a Degree Programme or may be part of a single exam covering several programmes from the same university or from other universities (during the registration the students should indicate their first choice).

The following definitions apply:

Available places = the number of places laid down in the call for applications to the Study Programme, or determined by subsequent legal provisions; these exclude any additional places reserved according to special provisions of the programme (e.g. for international study programmes, they do not include places for foreign students selected from other universities; for all programmes with restricted access regulated nationally, these do not include the places reserved for transferring students).

Number of candidates for the exam = number of students registered for the exam indicating the study programme as their first choice;

Number of participants in the exam = number of students participating in the exam indicating the study programme as their first choice;

Number of participants in the exam for every available place = number of students participating in the exam who indicated the study programme as their first choice as a ratio of the number of places available on the programme.

First year enrolments

This includes all students enrolled in the first year, including those joining the study programme in its first year through transferrals, as well as those enrolled in the first year but not for the first time (e.g. repeating students).

New Careers

Students who start a new university career (excluding transfers) from year one in a second cycle programme.

Passages and transfers

Passage: when a student applies to move to a different study programme from the one enrolled in the previous year, within the same university.

Transfer: when a student transfers from a study programme in one university to any programme in another university.

Registered students

Students who begin a career in the Italian University System for the first time and who enrol in the first year (i.e. for whom no previous university careers are recorded) of a First Cycle (L509, L) or Single Cycle programme (LSCU, LMCU)

Statistical Observatory of the University of Bologna

The Statistical Observatory was founded in 1997 in order to “provide the university governing bodies with a reliable and timely documentary and monitoring database aiming to promote decision-making processes and planning, particularly of learning activities and other services targeting the student population” (art.1 of the Founding and Operational Regulation). Following the disabling of the Statistical Observatory, as resolved by the Board of Governors on 14 December 2010, from the second semester of academic year 2010-11 the survey and subsequently analysis of the attending students opinion is cared for the University of Bologna by Academic Affairs Division - Quality Assurance Department and Control and Finance Division - Support Planning and Evaluation Department. The overall results and the methods of collection and analysis are described in the document published online on the [Statistical Observatory of the University of Bologna](#).

University DataWarehouse

In information service for the managers of the University of Bologna organisational departments which gathers, integrates and reorganises data from various sources and makes it available for analysis and evaluation for the purposes of planning and decision-making.

Withdrawal

Suspension of studies by students who do not register in the next academic year, or who drop out from the degree programme.