

2013



ALMA MATER STUDIORUM
UNIVERSITÀ DI BOLOGNA



School of Engineering and Architecture – Ravenna Campus
LAUREA MAGISTRALE (SECOND CYCLE
DEGREE/TWO YEAR MASTER - 120
ECTS) IN BUILDING AND URBAN
SYSTEMS A.Y. 2013/2014
Programme Director Prof. Gabriele Bitelli

REPORT

Study Programme Report
Building and Urban Systems
Programme ex D.M. 270/04 - Code 0941 - Class LM-24
School of Engineering and Architecture – Ravenna Campus
Programme Director Prof. Gabriele Bitelli

Created in collaboration with Teaching and Learning Administrative Area (AFORM – Area della Formazione) – Quality Assurance Unit

Edited by AAGG – University Web Portal Division and CeSLA – Web Technology Division, with MultiPublishing technology

Release date: July 2013

Academic year of reference: 2013/2014

www.unibo.it/QualityAssuranceEn

INDICE

What is the Study Programme Report?	1
A. Presentation and prospects	2
A.1. Presentation	2
A.2. Admission requirements	2
A.3. Learning outcomes	2
A.4. Career opportunities	3
A.5. Opinion of social partners and potential employers	4
A.6. Further studies	4
B. Teaching and Learning	5
B.1. Course Structure Diagram	5
B.2. Calendar and lecture timetable	5
C. Resources and services	6
C.1. Teachers	6
C.2. Student services: offices	6
C.2.1. Future students	6
C.2.2. Enrolled students	6
C.2.3. International students	6
C.2.4. Graduates	6
D. The Study Programme in figures	7
D.1. Students starting their university careers	7
D.1.1. Enrolments	7
D.1.2. Additional data on students' starting their university careers	8
D.1.2.1. Candidates registered for the entrance exam	8
D.1.2.2. Incoming students	9
D.2. Regularity of studies	11
D.2.1. Students leaving the Programme between years 1 and 2	11
D.2.2. Regular graduates	12
D.2.3. Additional data on regularity of studies	13
D.2.3.1. Credits obtained by students in the 1st year	13
D.2.3.2. Exams passed and average grade	14
D.3. Opinions of graduates and attending students	16
D.3.1. Opinion of graduates	16
D.3.2. Additional data on opinions of students	18
D.3.2.1. Opinion of attending students	18
D.4. Entry into the world of work	20
D.4.1. Employment situation	20
E. Find out more: the quality of your Study Programme	22
F. Glossary terms	25

WHAT IS THE STUDY PROGRAMME REPORT?

What is the Study Programme Report?

The Study Programme Report provides updated information which is important for the purposes of Quality Assurance and is published annually by the University of Bologna.

The main aspects of the teaching programme are described in detail, with a view to assuring the principle of transparency and promoting self-assessment and continuous improvement processes.

The document provides a concrete overview of the features and results of the Study Programme for students, families, employers and so on.

For example, regarding the current issue of employment, it describes the learning outcomes and career opportunities; it also includes statistics on the percentage of employed graduates (D.4. Employment situation).

The document is organised into five sections and a glossary:

A. Presentation and prospects

Key information on the Study Programme, including the expected learning outcomes, career opportunities and further studies.

B. Teaching and Learning

The updated course structure diagram with the full titles and listings of the course units and the latest published lecture timetable.

C. Resources and services

The list of teaching staff and their relative curricula, the offices (secretariats), services (work placements) and infrastructures (libraries, laboratories) available to students.

D. The Study Programme in Figures

Key data shows how many students are enrolled, how many have been assigned additional learning requirements, how many drop out after the first year, how many graduate in line with the programme schedule, the opinions of attending and graduating students on the teaching programmes and information concerning graduate employment.

E. Find out more: the quality of your Study Programme

How the quality system applied to your Study Programme works. The quality system of your Study Programme is a set of processes and responsibilities adopted to guarantee the quality of all Study Programmes at the University of Bologna.

NOTES:

- Reports are available for all Study Programmes for which it is possible to enrol in the first year in academic year 2012/2013: the information and data provided is as updated as possible.
- Sections A, B and C provide data for the academic year 2012/2013.
- Section D presents data regarding the Study Programmes in the last three academic years.
- The information and data were taken from the University databases and the reports published by the [Statistical Observatory of the University of Bologna](#) and [AlmaLaurea](#), and are updated to **15 June 2012**.

A. PRESENTATION AND PROSPECTS

This section presents the key information concerning the Study Programme, including the expected learning outcomes, career opportunities and further studies, updated to the academic year 2013/2014.

A.1. PRESENTATION

This paragraph provides information on the specific learning outcomes of the Study Programme and the curriculum.

The achievement of the professional learning outcomes of this class is assured through a specific study programme in which students develop competencies and technical skills which allow them to design buildings, building complexes and residential systems, organising their implementation and later management, evaluating the economic and environmental costs of the choices made in each phase of this process.

The study programme allows students to acquire a strong command of the methodological and operative aspects of the disciplinary fields of architectural and urban design, structural design and design of technological components for building, integrating this knowledge and these skills with knowledge of the physical analysis of the territory, the evolution of urban systems, economic organisation of projects and their environmental impact, to tackle and solve the typical problems of building and urban systems, including:

- executive implementation of complex building projects and urban development programmes;
- the inclusion of residential areas and infrastructures in the environmental and functional context, with particular reference to soil protection issues;
- the economic and environmental assessment of planning tools and interventions.

To consolidate and verify the ability to deal with these issues, work placements will be carried out in collaboration with public and private bodies operating in the territory.

A.2. ADMISSION REQUIREMENTS

This paragraph provides information on the knowledge required for admission to the Study Programme.

This information is not available in English at this time.

A.3. LEARNING OUTCOMES

This paragraph provides information on the knowledge and skills students will have acquired by the end of the Programme.

KNOWLEDGE AND UNDERSTANDING:

2nd cycle graduates will know:

- the methods and techniques of building design in terms of spatial, structural components and systems;
- building types, construction techniques and materials used now and in previous historical eras;
- the organisation criteria adopted in building and to assure safety;
- the methods of representation of buildings and the territory;
- the methods of economic evaluation used in the building sector;
- the methods and analysis techniques used for the territorial and environmental systems;
- economic and environmental assessment tools for buildings and urban plans on different scales.

The achievement of the ability to apply the above knowledge and understanding will be accomplished through the learning activities organised in the “Architecture and Town Planning” and “Building and the Environment” programme, supplementary and complementary activities as well as further activities including work placement and laboratories. The teaching methods include participation in seminars and exercises in the classroom and in the laboratory, individual and group projects, guided self-study and autonomous study. Assessment of the achievement of the described learning outcomes shall be mainly through tests, written and oral exams and project work.

ABILITY TO APPLY KNOWLEDGE AND UNDERSTANDING:

2nd cycle graduates will be able to apply their knowledge to solve concrete problems in a working environment, in particular concerning:

- the integrated design of buildings (spatial organisation, structures, systems, insertion in environmental contexts);
- restoration and structural rehabilitation of the existing building heritage;
- design of urban environments;
- organisation of infrastructure systems and territorial planning and protection.

The achievement of the ability to apply the above knowledge and understanding will be accomplished through the learning activities organised in the “Architecture and Town Planning” and “Building and the Environment” programme, supplementary and complementary activities as well as further activities including work placement and laboratories.

The teaching methods include participation in seminars and exercises in the classroom and in the laboratory, individual and group projects, guided self-study and autonomous study. Assessment of the achievement of the described learning outcomes shall be mainly through tests, written and oral exams and project work.

JUDGEMENT SKILLS:

2nd cycle graduates will be able to identify, formulate and solve problems relative to the design, implementation and management of complex interventions as part of their autonomous activities or coordinated work within public and private bodies.

The aforementioned judgement skills are accomplished through the learning activities organised in the “Architecture and Town Planning” and “Building and the Environment” programme, as well as further activities including work placement and laboratories and the preparation for the final examination.

The teaching methods include participation in seminars and exercises in the classroom and in the laboratory, individual and group projects, guided self-study and autonomous study.

Assessment of the achievement of the described learning outcomes shall be mainly through tests, written and oral exams and project work.

COMMUNICATION SKILLS:

2nd cycle graduates:

- will be able to interact with experts from other sectors and technicians of various levels, coordinating groups of staff for the design and execution of complex building projects, territorial planning and protection tools on different scales;
- will be able to communicate effectively in Italian and in English, produce reports and technical-regulatory documents.

The aforementioned communication skills are accomplished through the participation in core and supplementary learning activities as well as further activities including work placement and laboratories and the preparation for the final examination.

The teaching methods include participation in exercises in the classroom and in the laboratory, individual and group projects and guided self-study.

Assessment of the achievement of the described learning outcomes shall be mainly through written and oral exams and project work.

LEARNING SKILLS:

2nd cycle graduates will be able to:

- assure the continuous updating of their skills in a fully autonomous manner, as demanded by the continuous evolution of practices and regulations in the building and urban systems field.
- continue further studies and carry out independent research activities.

The aforementioned learning skills are achieved through learning activities in the disciplinary fields laid down in the degree programme system and in particular the activities carried out partly in an autonomous manner.

The specific teaching methodologies include tutorials. Assessment of the achievement of the learning skills shall be through the various exams organised throughout the programme.

A.4. CAREER OPPORTUNITIES

This paragraph provides information on the occupational profile, functions and fields of employment available to graduates of this Programme.

Professional figure:

BUILDING ENGINEER, FREELANCE OR PARTNER IN A PROFESSIONAL AND/OR ENGINEERING FIRM

Main functions:

- Designs buildings and infrastructures and managements all operational, technical and procedural execution phases (including liaison with customers, suppliers, the public administration, for the various regulatory areas);
- Analyses and assesses the existing building heritage and designs restoration works;
- Recognises the structural elements of the territory and the environment;
- Organises and manages building works, on site and in the relative industries, in compliance with the safety management and accident prevention regulations;
- Manages and coordinates the project engineering phases and complex technical-administrative procedures required for implementation;
- Participates, also in a coordinating role, in interdisciplinary working groups for the execution of complex urban projects, responsible not only for technical aspects but also cost feasibility and environmental compatibility.

Professional figure:

BUILDING ENGINEER IN REAL ESTATE AND CONSTRUCTION COMPANIES

Main functions:

- Manages companies working in the sector, or departments therein, with responsibility for the design and coordination of complex projects, in all phases, from planning to execution to management, with particular concern for economic feasibility and environmental compatibility.

- In particular, plans and manages activities for Project Management, Project Financing of Real Estate, Global Services and City Management.

Professional figure:

BUILDING ENGINEER FOR PUBLIC AUTHORITIES

Main functions:

- Manages departments and sectors in the civil services, with particular reference to the production and assessment of plan and programme feasibility;
- In particular, plans and manages on behalf of the public authority, activities for Project Management, Project Financing of Real Estate, Global Services and City Management.

Career opportunities:

Graduates from the Building and Urban Systems Engineering study programme carry out professional activities in various fields including design, production, management and organisation, technical and sales activities, both in construction companies and service industries in the building field, and in the civil service, as well as on a freelance basis, also through partnerships. In particular they may carry out activities in the Technical and Administrative management of large-scale projects in the private sector or Technical Management in the public administration.

In particular they will find career opportunities in innovative fields including:

- Project management and Project financing in the public and private sector;
- complex projects which require the coordination and monitoring of technical and administrative procedures, in engineering studies;
- the Real Estate sector, concerning both real estate management and urban development plans;
- Global Service and City Management sectors.

A.5. OPINION OF SOCIAL PARTNERS AND POTENTIAL EMPLOYERS

This paragraph describes the outcome of the consultation with the representative employment and trade organisations.

This information is not available in English at this time.

A.6. FURTHER STUDIES

It gives access to thirdcycle studies (PhD/Specialisation schools) and to professional master's programmes.

B. TEACHING AND LEARNING

This section describes the updated course structure diagram (for academic year 2013/2014), with the full titles and listings of the course units and the latest published lecture timetable.

B.1. COURSE STRUCTURE DIAGRAM

The link takes you to the Study Programme course structure diagrams. You can also access to each course unit content.

- [Study plan: all course units in the programme](#)

B.2. CALENDAR AND LECTURE TIMETABLE

The links take you to the teaching calendar (exam session and final examination session) and the lecture timetable (in Italian).

- [Lecture timetable](#)
- [Exam sessions](#)
- [Final examination sessions](#)

C. RESOURCES AND SERVICES

This section provides a list of teaching staff and their relative curricula and a description of the services available to students for the academic year 2013/2014.

C.1. TEACHERS

The paragraph lists the lecturers who teach in the Study Programme: from here you can access the personal web pages of each one (in Italian). Information updated to 28 May 2013 (in Italian).

Permanent teaching staff:

Agostini, Ilaria	Bitelli, Gabriele	Milan, Andreina	Zunarelli, Stefano
Antonini, Ernesto	Colla, Camilla	San Vicente Santiago, Felix	
Archetti, Renata	Landi, Luca	Toth, Elena	
Bartolomei, Luigi	Massaretti, Pier Giorgio	Zanutta, Antonio	

Contract teaching staff:

Brioli, Roberto Maria	Virgilio, Giovanni
Cagneschi, Claudia	
Marchetti, Leonardo	
Stanzani, Stefano	

C.2. STUDENT SERVICES: OFFICES

C.2.1. FUTURE STUDENTS

The link take you to the webpage which provides specific information about the offices and the services for the future students (in italian).

- [Future students](#)

C.2.2. ENROLLED STUDENTS

The link take you to the webpage which provides specific information about the offices and the services for the enrolled students (in italian).

- [Enrolled students](#)

C.2.3. INTERNATIONAL STUDENTS

The links take you to the reference Work Placement and International Relations office for the Study Programme, where available.

- [International students](#)

C.2.4. GRADUATES

- [Graduates](#)

D. THE STUDY PROGRAMME IN FIGURES

Information on students' starting their university careers, how many students are in line with the regular programme, opinions of students and graduates on the teaching programmes and information concerning graduate employment.

This section provides the data of the last academic years for the Study Programme (SP) and a comparison with similar Study Programmes. The University of Bologna has divided its Study Programmes into four groups:

- **BIOMEDICAL** group: Study Programmes of the Schools of Pharmacy, Biotechnology and Sport Science; Medicine; Agriculture and Veterinary Medicine
- **SCIENTIFIC-TECHNOLOGICAL** group: Study Programmes of the Schools of Engineering and Architecture; Sciences
- **SOCIAL SCIENCES** group: Study Programmes of the Schools of Economics, Management, and Statistics; Law, Political Sciences
- **HUMANITIES** group: Study Programmes of the Schools of Arts, Humanities, and Cultural Heritage; Foreign Languages and Literatures, Interpreting and Translation; Psychology and Education

The section presents the results of the Study Programme for the last three academic years.

Main data shows how many students enrolled, the number of students assigned OEA, how many drop out after the first year, how many graduate in line with the programme schedule, the opinions of attending and graduating students on the teaching programmes and information concerning graduate employment.

The information and data presented in this section, updated to 28 May 2013, were taken from University databases and [AlmaLaurea](#).

Study Programmes may be subject to degree programme system modifications from one academic year to the next, and the data provided in this section may refer to a programme with a slightly different system to the one currently running (such as programme title, course structure diagram and list of lecturers). However, indicatively the data presents the general trend of the Study Programme over the past three years.

Most of the Study Programmes running at the University of Bologna have been reformed in compliance with DM 270/04, most of them from the academic year 2008/2009. For this reason for the previous academic years for some information, as opinion of the graduates and employment situation, are provided in the reports of those Programmes, on the paragraph D.5. refers to the Study Programmes as they were presented prior to the reform.

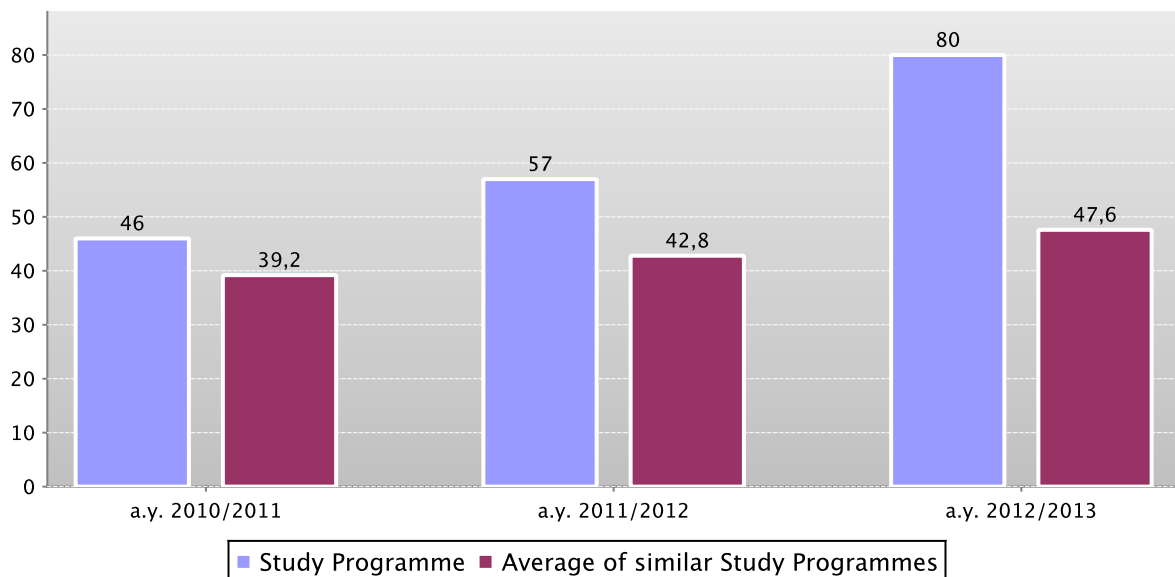
D.1. STUDENTS STARTING THEIR UNIVERSITY CAREERS

Characteristics of incoming students at the beginning of their study. Tables and graphs provide information on number of enrolled students (*new careers*), focusing on the characteristics of students and results of any entrance tests.

D.1.1. ENROLMENTS

The **graph** and the **table** show the number of **new careers** of the Study Programme compared with the **average of similar Study Programmes** (which belong to the same group), for the indicated academic years.

New careers



	a.y. 2010/2011		a.y. 2011/2012		a.y. 2012/2013	
	New careers	Total N. enrolled students	New careers	Total N. enrolled students	New careers	Total N. enrolled students
Study Programme	46	103	57	143	80	182
Average of similar Study Programmes	39,2	60,4	42,8	62,9	47,6	62,6

D.1.2. ADDITIONAL DATA ON STUDENTS' STARTING THEIR UNIVERSITY CAREERS

D.1.2.1. CANDIDATES REGISTERED FOR THE ENTRANCE EXAM

In academic year 2012/2013 access to this Study Programme was not restricted.

D.1.2.2. INCOMING STUDENTS

Geographic origin, type of 1st cycle degree, age and gender of students.

The data shows a homogeneous group of students (**cohort**) which started together their academic career.

Students which have **passed** to an other Study Programme, **transferred** from an other university, or registered to a 2nd degree are not included.

The **tables** show the number, geographic origin, gender, age, type and grade of 1st cycle degree of students enrolling in the degree programme.

The Study Programme data is compared with the average of similar Study Programmes (which belong to the same group), for the indicated academic years.

		New careers	Geographic origin					Gender		Average age of new career students		
			Students coming from the province of the Study Programme site	Students coming from other provinces where Unibo has a site	Students coming from other provinces of Emilia Romagna region	Students coming from other Italian regions	Students coming from abroad	M	F	22 or less	23 - 24	25 or more
Students 2010/2011	Study Programme	46	13,0%	58,7%	8,7%	19,6%		65,2%	34,8%	6,5%	52,2%	41,3%
	Average of similar Study Programmes	39,2	26,0%	19,0%	8,2%	42,6%	4,3%	70,2%	29,8%	36,7%	42,3%	21,0%
Students 2011/2012	Study Programme	57	21,1%	49,1%	3,5%	26,3%		61,4%	38,6%	5,3%	54,4%	40,4%
	Average of similar Study Programmes	42,8	25,6%	18,3%	8,1%	44,8%	3,2%	66,3%	33,7%	31,2%	46,7%	22,2%
Students 2012/2013	Study Programme	80	17,5%	40,0%	1,3%	40,0%	1,3%	65,0%	35,0%	6,3%	51,3%	42,5%
	Average of similar Study Programmes	47,6	27,9%	18,2%	6,2%	43,2%	4,6%	68,2%	31,8%	32,0%	44,7%	23,3%

		First Cycle Degree: University of previous studies				First Cycle Degree: more frequent class		First Cycle Degree: grade					
		University of Bologna	Other Italian Universities	Foreign University	Other not defined	Class code and name	% of students	First Cycle Degree grade between 66 and 90	First Cycle Degree grade between 91 and 100	First Cycle Degree grade between 101 and 105	First Cycle Degree grade between 106 and 110	First Cycle Degree grade 110 and honors	First Cycle Degree grade not available
Students 2010/2011	Study Programme	73,9%	23,9%	2,2%		4 SCIENZE DELL'ARCHITETTURA E DELL'INGEGNERIA EDILE	73,9%	13,0%	34,8%	21,7%	23,9%	6,5%	
	Average of similar Study Programmes	75,1%	17,9%	0,6%	6,4%	10 INGEGNERIA INDUSTRIALE	25,3%	16,3%	31,8%	16,8%	14,2%	14,5%	6,4%
Students 2011/2012	Study Programme	82,5%	7,0%	1,8%	8,8%	4 SCIENZE DELL'ARCHITETTURA E DELL'INGEGNERIA EDILE	66,7%	7,0%	38,6%	26,3%	17,5%	1,8%	8,8%
	Average of similar Study Programmes	71,3%	21,4%	0,4%	6,9%	10 INGEGNERIA INDUSTRIALE	15,9%	15,3%	34,0%	17,7%	13,6%	12,5%	6,8%
Students 2012/2013	Study Programme	66,3%	15,0%		18,8%	4 SCIENZE DELL'ARCHITETTURA E DELL'INGEGNERIA EDILE	35,0%	11,3%	48,8%	8,8%	8,8%	3,8%	18,8%
	Average of similar Study Programmes	67,6%	15,8%	0,4%	16,3%	L-9 INGEGNERIA INDUSTRIALE	21,0%	16,4%	33,9%	12,8%	11,1%	9,5%	16,3%

D.2. REGULARITY OF STUDIES

Insight into the regularity with which the students pass their exams. The graphs and the tables provide information on the number of students who leave the programme between the first and second year and the number of regular graduates, focusing on the number of credits obtained at the end of the first year, on the exams passed and average grade achieved for each course unit.

D.2.1. STUDENTS LEAVING THE PROGRAMME BETWEEN YEARS 1 AND 2

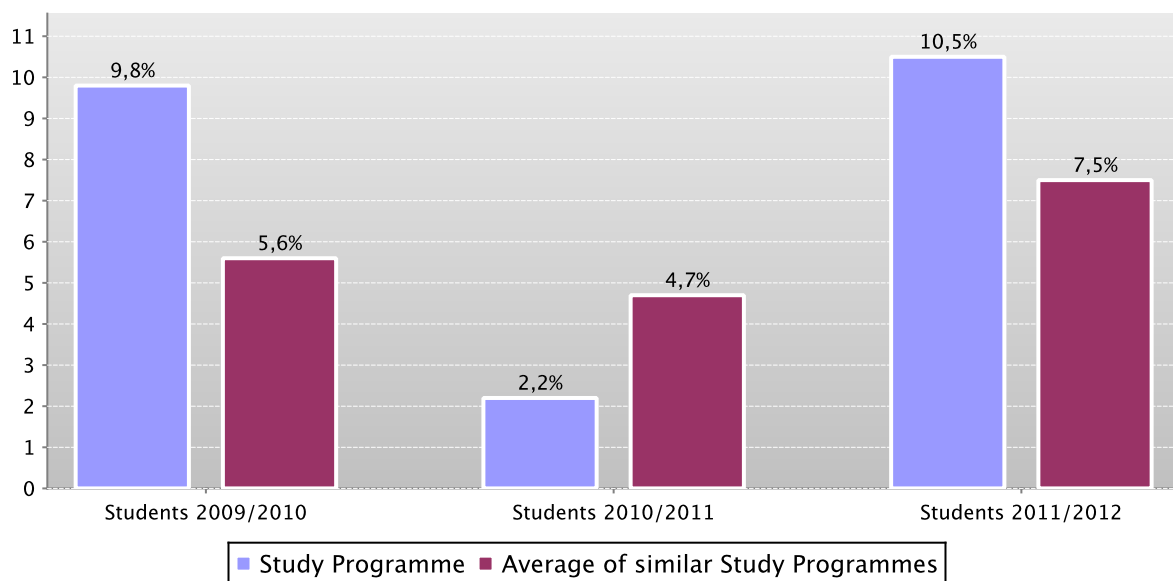
Here the number of students leaving the Study Programme is shown.

The **graph** shows the percentage of students who leave the programme after the first year compared to the **average of similar Study Programmes** (belonging to the same group).

The **table** shows the registered students (**new careers**), the percentage of students leaving the programme who **pass** to a different Study Programme in the same university, **transfer** to another university or **withdraw** from studies as well as the enrolled **repeating** students and those enrolled in the second year.

The Study Programme data is compared with the **average of similar Study Programmes** (which belong to the same group), for students registered (**new careers**) in the indicated academic years.

Percentage of withdrawals between years 1 and 2



		New careers	% withdrawals	% passages and transfers	% repeating students	Students enrolled in the second year
Students 2009/2010	Study Programme	61	9,8%	0,0%	0,0%	55
	Average of similar Study Programmes	40,5	5,6%	0,8%	0,1%	37,9
Students 2010/2011	Study Programme	46	2,2%	2,2%	0,0%	44
	Average of similar Study Programmes	39,2	4,7%	0,7%	0,0%	37,1
Students 2011/2012	Study Programme	57	10,5%	0,0%	0,0%	51
	Average of similar Study Programmes	42,8	7,5%	1,3%	0,1%	39

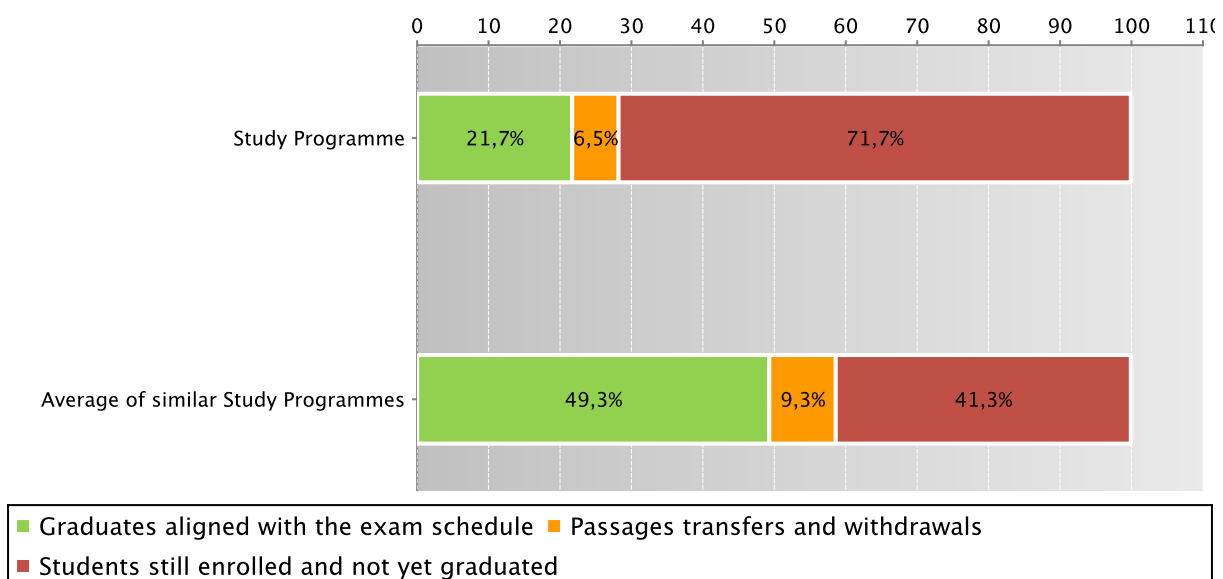
D.2.2. REGULAR GRADUATES

Here you will find information on regular graduates, on how many students, at the end of the regular programme duration, left the programme and how many are still enrolled but **not aligned to the exam schedule**.

The **graph** and the **table** show the situation concerning the **registered students (new careers)** for the indicated academic year, at the end of the regular duration of the Study Programme, highlighting the percentage of regular graduates, the number of students still enrolled (**not aligned to the exam schedule** and **repeating** students), students who have left the programme (including **passages, transfers** and **withdrawals**).

The Study Programme data is compared with the **average of similar Study Programmes** (which belong to the same group), for students enrolled in the indicated academic year.

Situation of students 2010/2011 at the end of regular duration of the study programme



		New careers	Regular graduates		Passages transfers and withdrawals		Students still enrolled and not yet graduated	
		N.	%	N.	%	N.	%	
Students 2009/2010	Study Programme	61	13	21,3%	7	11,5%	41	67,2%
	Average of similar Study Programmes	40,5	17	42,0%	4,3	10,7%	19,1	47,2%
Students 2010/2011	Study Programme	46	10	21,7%	3	6,5%	33	71,7%
	Average of similar Study Programmes	39,2	19,3	49,3%	3,7	9,3%	16,2	41,3%

D.2.3. ADDITIONAL DATA ON REGULARITY OF STUDIES

D.2.3.1. CREDITS OBTAINED BY STUDENTS IN THE 1ST YEAR

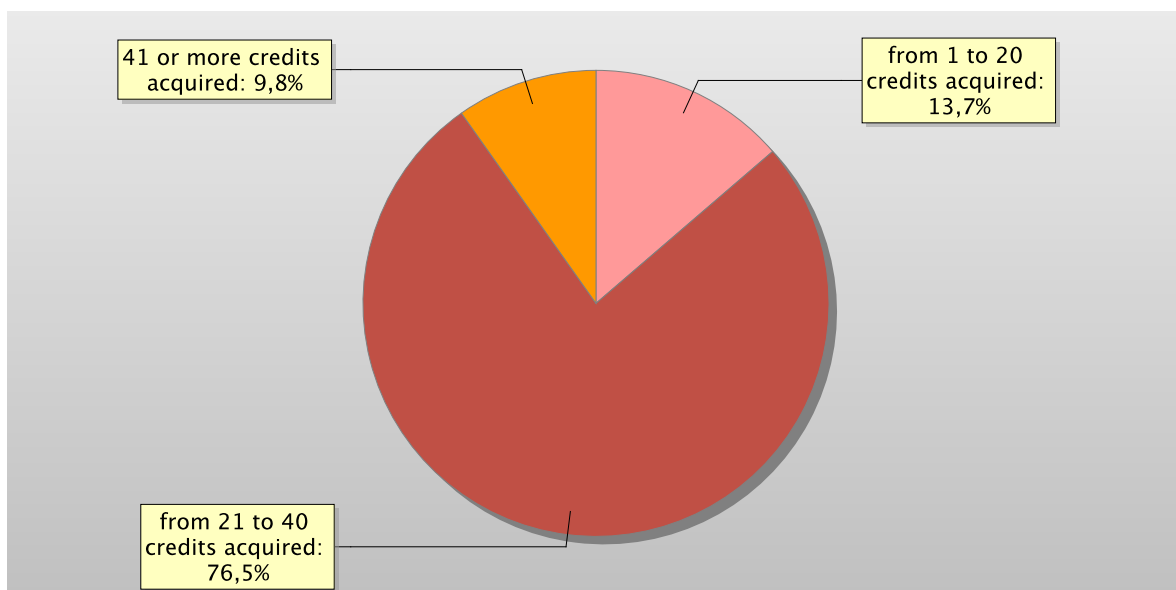
This offers an insight into how regularly students pass their exams.

The **graph** shows the distribution of the students according to the number of **credits** obtained at the end of the first year.

In addition, the **table** shows the number of students registered at the second year and average **credits** obtained during the first year.

The Study Programme data is compared with the **average of similar Study Programmes** (wich belong to the same group), for students registered in the indicated academic years.

Distribution of the students in 2011/2012 according to the number of credits obtained at the end of the first year*



	Study Programme	Students enrolled in the 2nd year	% students with *				Average credits per student
			0 credits acquired	from 1 to 20 credits acquired	from 21 to 40 credits acquired	41 or more credits acquired	
Students 2009/2010	Study Programme	55	3,6%	27,3%	36,4%	32,7%	31,6
	Average of similar Study Programmes	37,9	8,1%	22,8%	42,5%	26,7%	29
Students 2010/2011	Study Programme	44	2,3%	4,5%	70,5%	22,7%	35,1
	Average of similar Study Programmes	37,1	6,8%	17,0%	45,8%	30,4%	31,2
Students 2011/2012	Study Programme	51		13,7%	76,5%	9,8%	30
	Average of similar Study Programmes	39	3,1%	16,3%	45,0%	35,6%	33,9

*Note: by convention, credits are considered to be obtained by students by 31st October of the year following the year of enrolment.

D.2.3.2. EXAMS PASSED AND AVERAGE GRADE

The **table** shows number of exams passed and average grade achieved for each course unit in the calendar year 2011. Marks for the exams passed are expressed out of thirty.

The data refers to the course unit code and therefore includes the various branches of the programme divided into channels or sub-groups, divided by letter.

It considers all subjects for which a grade is assigned, and therefore excludes all those to which a pass/fail score is allocated.

The data concerning previous programmes is given in a separate section.

Data of the Study Programme D.M. 270/04 Ingegneria dei sistemi edilizi e urbani (code 0941)

	N. of exams passed	Average grade *
34724 PIANIFICAZIONE TERRITORIALE M	50	26,2
35125 TECNICA DELLE COSTRUZIONI M	25	25,6
35172 COMPOSIZIONE ARCHITETTONICA M	46	27,5
35175 ELEMENTI DI PROGETTAZIONE EDILIZIA SOSTENIBILE M	41	29,2
35178 ANALISI DEI SISTEMI URBANI M	52	28,3
35185 ECONOMIA DELL'EDILIZIA M	43	25,7
35188 PIANIFICAZIONE E DIFESA DEL SUOLO M	47	26,8
35191 TECNICHE DI VALUTAZIONE ECONOMICA E AMBIENTALE DI PIANI E PROGETTI M	44	27,3
35194 ARCHITETTURA DELLE INFRASTRUTTURE E DEL PAESAGGIO M	53	26,7
35201 CHIMICA DELL'AMBIENTE E DEI BENI CULTURALI M	7	26,1

	N. of exams passed	Average grade *
35204 COMPLEMENTI DI TOPOGRAFIA M C.I.	1	
35209 DIFESA IDRAULICA DEL TERRITORIO URBANO E COSTIERO M-1 C.I.	6	25
35210 ELEMENTI DI PROGETTAZIONE EDILIZIA SOSTENIBILE M C.I.	1	
35211 DIFESA IDRAULICA DEL TERRITORIO URBANO E COSTIERO M-2 C.I.	4	
65660 DIFESA IDRAULICA DEL TERRITORIO URBANO E COSTIERO M	17	28,1
65665 DIRITTO DELL'ENERGIA E DEI TRASPORTI M	6	27,8
65666 IDRAULICA E IMPIANTI ACQUEDOTTISTICI M	20	26,5
65682 RILIEVO E SISTEMI PER LA GESTIONE DEI DATI TERRITORIALI M	20	26,9

* Note: no average grade is given if the number of exams passed is less than or equal to 5.

D.3. OPINIONS OF GRADUATES AND ATTENDING STUDENTS

Opinions of graduates on the Study Programme.

Tables and graphs provide information on the number of graduates who expressed positive opinions on the Study Programme, focusing on opinions expressed by attending students on course units.

D.3.1. OPINION OF GRADUATES

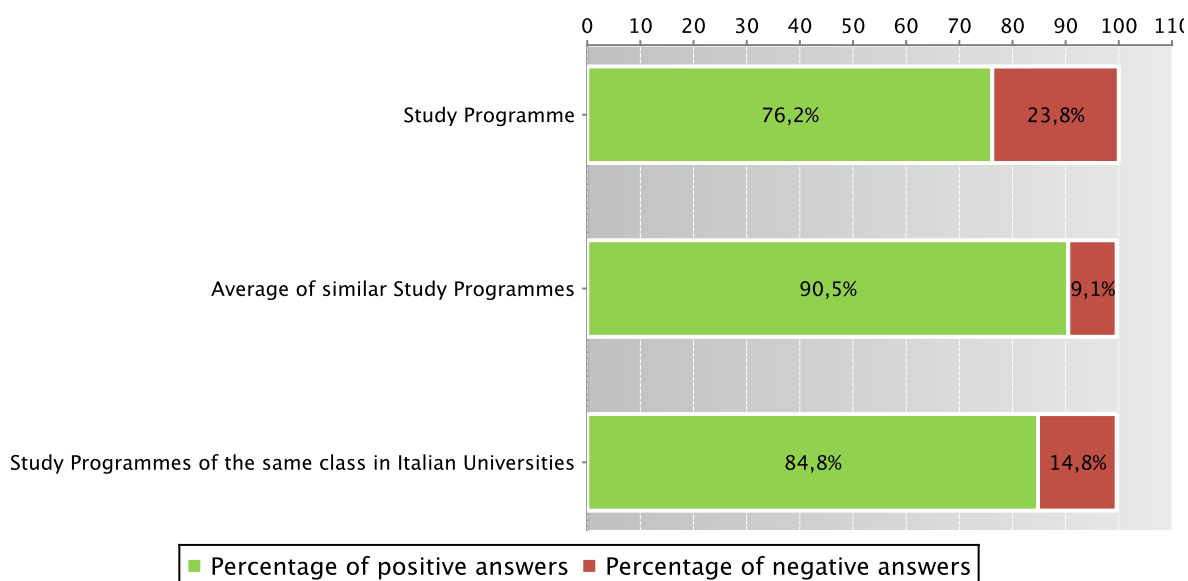
The **graph** shows the percentage of graduates (*AlmaLaurea* survey) who responded positively to the question: “**Are you generally satisfied with the Study Programme**”.

In addition, the **table** shows the percentage of students who answered “Yes, to the same programme at the university” to the question “Would you register again to the university?”.

The Study Programme data is compared with the **average of similar Study Programmes (which belong to the same group)**, and the average of Study Programmes of the same **class** of other Italian universities for the graduates of the indicated years.

Graduates in 2012 who responded positively to the question: “Are you generally satisfied with this Study Programme?”

Data of the Study Programme D.M. 270/04 Ingegneria dei sistemi edilizi e urbani (code 0941)



Data of the Study Programme D.M. 270/04 Ingegneria dei sistemi edilizi e urbani (code 0941)

		N. graduates	Completed Questionnaires	% of positive answers to the question: “Are you generally satisfied with this Study Programme?”	% of answers “yes to the same Programme in the same University” to the question “Would you register again to the University”
2011	Study Programme	8	8	100,0%	100,0%
	Average of similar Study Programmes	20	19,4	90,0%	78,4%
	Study Programmes of the same class in Italian Universities	66	62	96,8%	83,9%
2012	Study Programme	21	21	76,2%	61,9%
	Average of similar Study Programmes	22	21,5	90,5%	78,6%
	Study Programmes of the same class in Italian Universities	285	270	84,8%	72,6%

Symbols:

(*) The opinions of the Study Programmes with less than 5 graduates are not shown.

Further information on [Graduates' Profile Report](#).

D.3.2 ADDITIONAL DATA ON OPINIONS OF STUDENTS

D.3.2.1. OPINION OF ATTENDING STUDENTS

The **graph** shows the percentage of attending students who responded positively to the question in the questionnaire: “Are you generally satisfied with this course unit?” in academic year 2011/2012.

The **table** also shows the number of completed questionnaires.

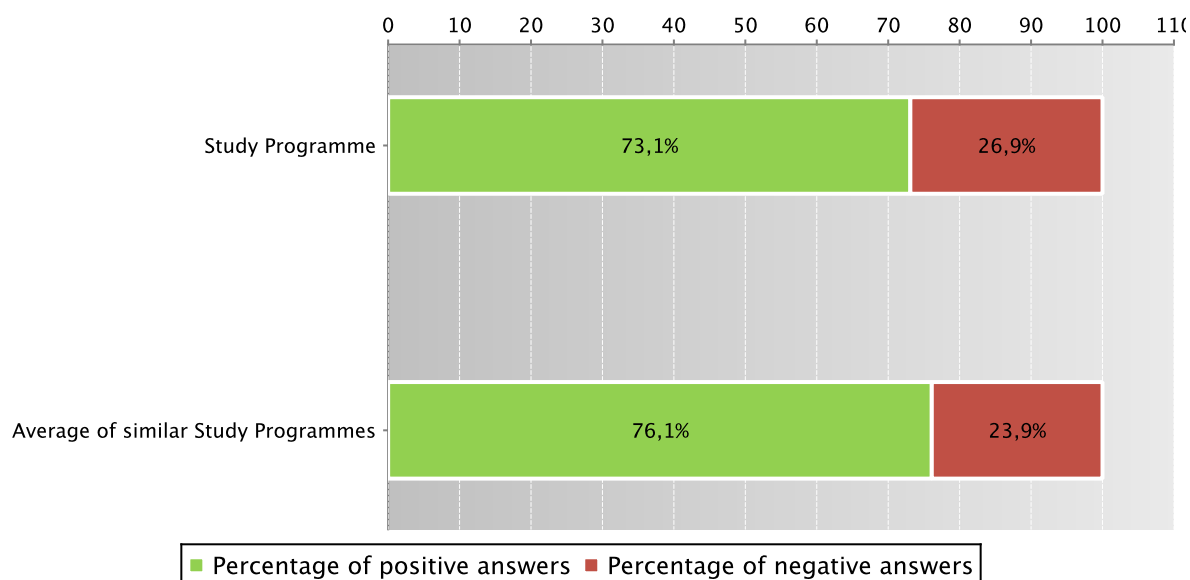
The Study Programme data is compared with the **average of similar Study Programmes** (which belong to the same group), for the indicated academic years.

The data concerning the students' opinion refers to the opinions of those attending lessons, whether they are enrolled in the current programme or a Study Programme running under pre-reform regulations (under D.M. 509).

For the University of Bologna the survey and subsequently analysis of the opinions of students attending the course is cared by *Aform* - Quality Assurance Department and *Arag* - Support Planning and Evaluation Department. The overall results and the methods of collection and analysis are described in the document published online on the [Statistical Observatory of the University of Bologna](#) (see the note in the glossary).

Students who responded positively to the question: “Are you generally satisfied with this course unit?” in academic year 2011/2012

Data of the Study Programme D.M. 270/04 Ingegneria dei sistemi edilizi e urbani (code 0941)



Data of the Study Programme D.M. 270/04 Ingegneria dei sistemi edilizi e urbani (code 0941)

		Number of completed questionnaires	% of positive answers concerning the general satisfaction with the course unit – Question 19
a.y. 2009/2010	Average of similar Study Programmes	386,1	77,1%
a.y. 2010/2011	Study Programme	8	87,5%
	Average of similar Study Programmes	372,6	77,9%
a.y. 2011/2012	Study Programme	294	73,1%
	Average of similar Study Programmes	422,1	76,1%

Symbols:

(*) When there is a small number of questionnaires, the percentage of positive opinions on overall satisfaction is not presented.

Further information on [Rapporto Opinione degli studenti frequentanti sulle attività didattiche](#) (the content is in Italian).

D.4. ENTRY INTO THE WORLD OF WORK

Employment situation of graduates of the Study Programme.

Tables and graphs provide information on the employment situation of graduates one year after graduating.

D.4.1. EMPLOYMENT SITUATION

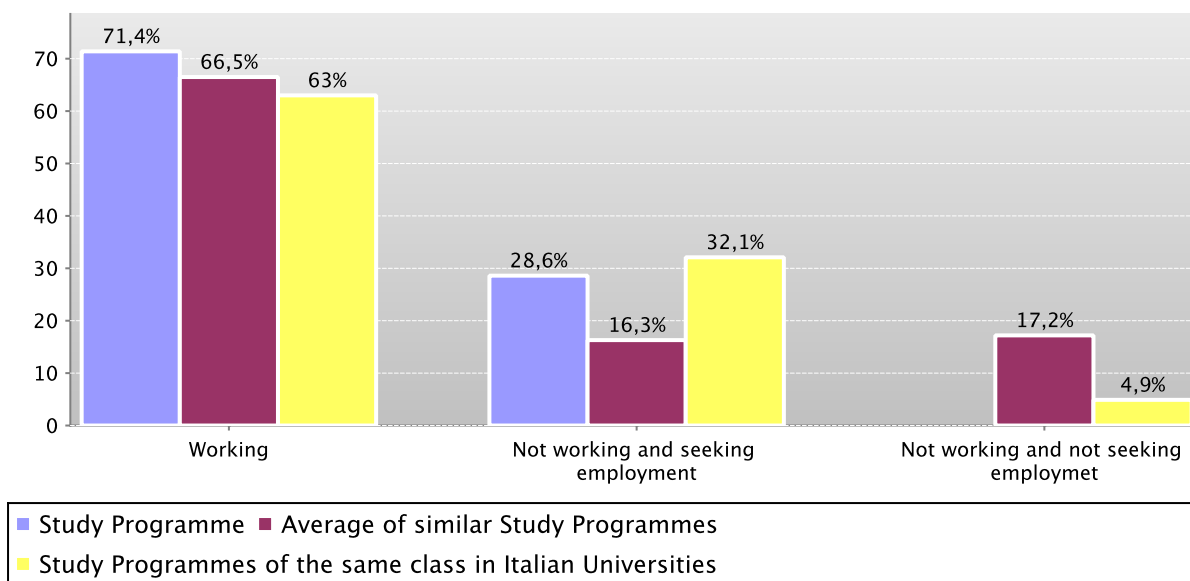
The paragraph shows the employment situation of graduates one year after graduating.

The data is taken from the [AlmaLaurea](#) reports on the employment situation of graduates.

The **graph** shows who is working, who is not working and is not seeking employment, who is not working but is seeking employment. In addition, the **table** shows the number of graduates interviewed, the number involved in internships and traineeships and the appropriateness of their degree to the job.

The Study Programme data is compared with the [average of similar Study Programmes \(which belong to the same group\)](#) and the average of Study Programmes of the same [class](#) of other Italian universities for the graduates of the indicated years.

Employment situation of graduates in 2011 one year after graduating



	Study Programme	N. graduates interviewed	Employment situation (1)			Not working, not seeking employment, but following a university programme/traineeship (2)	Degree's appropriateness for the job (referred to the graduates who just work) (3)	
			Working	Not working and not seeking employment	Not working and seeking employment		Effective / very effective	Quite effective
Graduation Year 2011	Study Programme	7	71,4%		28,6%		60,0%	40,0%
	Average of similar Study Programmes	17,8	66,5%	17,2%	16,3%	12,3%	58,1%	30,8%
	Study Programmes of the same class in Italian Universities	81	63,0%	4,9%	32,1%	1,2%	72,5%	17,6%

Symbols:

(*) The opinions of the Study Programmes with less than 5 graduates are not shown.

Notes on the AlmaLaurea report on the employment situation of graduates

(1) "Employment situation": the definition includes the number of employed graduates who declaring to carry out a paid work activity, provided that is not training activity (internship, traineeship, PhD degrees, specialization schools).

(2) "Number of those who do not work, who are not seeking employment but who are following a university programme/traineeship": the definition includes those who are enrolled in traineeships, PhD degrees, specialisation schools, Italian "master universitari" (first and second level). The presentation of this data complies with article 2 of D.M. 544 of 31st October 2007, as later provided for in Management Decree no. 61 of 10th June 2008 (transparency requirements).

(3) The evaluation of the appropriateness of the degree is obtained by a combination of the requirement of the relative qualification for the job held and the level of usage of the skills learned at university.

Further information on [Graduates' Employment report](#).

E. FIND OUT MORE: THE QUALITY OF YOUR STUDY PROGRAMME

The University of Bologna has identified its objectives as the *personal, cultural and professional growth of students and the improvement of the quality of learning, also in relation to the needs of society* (Strategic Plan 2010-2013).

Students, employers and society as a whole, have the right to effective learning for individual and intellectual growth, to develop critical sense and to prepare for the world of work.

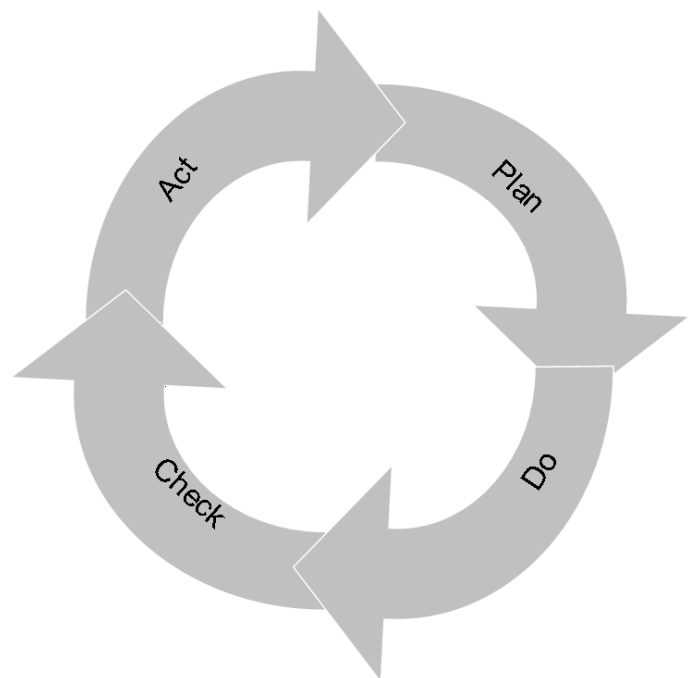
In the Statute and the Strategic Plan 2010-2013 the University of Bologna acknowledges its responsibility in guaranteeing the quality of its study programmes, and for this purpose adopts an "internal quality assurance system".

The Internal Quality Assurance system

The internal quality assurance system is a set of processes and responsibilities adopted to guarantee the quality of Study Programmes at the University of Bologna.

The guarantee of the quality of a Study Programme is the correspondence of the results achieved with the set objectives, in the following phases:

- Plan: defining the objectives
- Do: implementing the planned actions
- Check: checking that the objectives have been achieved
- Act: planning improvement action



This path responds to the expectations of students, guides teaching behaviour and provides indicators for the assessment of results. Self-assessment is based on the analysis of significant data (for example, the number of students graduating in line with the exam schedule, students' opinions and the employment rates of graduates) and highlights strengths and weaknesses in order to reflect on the achieved results, critically consider one's own working methods and take steps for the continual improvement of the Programme. This path involves all educational stakeholders, including students, in order to make use of the contributions of everyone with first-hand knowledge of the Study Programme. Improvement is therefore a day to day development, concerning all aspects of teaching: from the lesson timetable to the publication of on-line programmes, from classroom management to exam methods, and the actual design of the Programme.

This is what happens in each phase:

- **Planning:** the Study Programme is the result of a proposal from the teaching structures and approved by the Academic Bodies.
- **Management:** Schools, Departments and Study Programmes manage the activities required to ensure teaching. The activities are organised as follows:

What we do	Who does what				
	Professors	Study Programme	Schools	Departments	General Administration
Teaching calendar, lessons programme and exam schedules			x		
Management of financial resources			x	x	
Classroom teaching	x				
Management of classrooms and laboratories			x	x	
Libraries and study rooms			x	x	
Approval of individual study plans		x			
Communication and information		x	x		Academic Affairs Division
Guidance service		x	x		Academic Affairs Division
Internships		x	x		Academic Affairs Division
Administrative services: Student Administration Office					Academic Affairs Division
Administration services: Degree programme office			x		Academic Affairs Division
Study grants and loans ad honorem					Academic Affairs Division
Student mobility: university subsidies and programmes					International Relations Division
Mobility: study grants for dissertations abroad			x		
Mobility: authorisations and recognitions		x			
Other students support services		x	x		x

- Internal assessment:** every Study Programme periodically assesses its own results, evaluating, for example, the number of enrolled students, the number of withdrawing students, student opinions etc.; in this way, the strengths and weaknesses, as well as any implemented improvement actions, are highlighted. This phase is organised as follows:

What we do

Definition, gathering and publication of evaluation data

According to the general guidelines of the University and national and international standards, are defined the tools through which should be evaluated the results (indicators). The survey data to be evaluate are published every year on the Report of the Study Program.

Who does what

Academic Bodies

Self-Assessment

The Schools and Study Programmes assess the effectiveness of the previously adopted solutions, analyse the progress of their learning activities and draw up proposals for improvement.

Schools and Study Programmes

Internal audit

The results of the self-assessment process are reviewed in the following phases:

- **Analysis:** the University Quality Manager analyses the review documents, considering the ability to identify problems, propose solutions and the overall development of the internal quality assurance system.
- **Review:** The observations on the results obtained and the good practices adopted are examined together with the persons in charge of the Schools and Study Programmes in meetings organised by scientific-disciplinary field. The persons in charge receive the observations and inputs on the areas for development and the actions to be adopted in future to improve results.
- **Sharing:** the conclusions of the review activities are submitted to the Academic Bodies and the University Evaluation Board.

Quality Manager

Vice Rector for Teaching and Education

Academic Bodies

-
- **Improvement:** on the basis of the results of the internal audit, the Schools and Study Programmes plan improvement activities, to ensure that the Study Programmes increasingly respond to the needs of society. The cycle then starts over again, with the definition of actions to be implemented, the results of which are in turn verified, in a continuous path that guarantees the quality of education.

F. GLOSSARY TERMS

Additional Learning Requirements

Students enrolling in the first year of a first cycle or single cycle degree and who, following the results of the entrance exams established for each study programme, do not possess the knowledge required for access to the programme, are assigned additional learning requirements (OFA).

The OFA are fulfilled by passing an assessment test defined by the programme.

The non-fulfilment of the requirements by the date set by the Academic Bodies and published on the University Portal will lead to the re-enrolment in the first year of the programme.

AlmaLaurea

AlmaLaurea is an innovative in-line database service of graduates' curriculum vitae (1,620,000 CVs, from 53 Italian universities as of 05/07/2012), which offers a link between graduates, universities and businesses.

Created in 1994 on the initiative of the Statistical Observatory of the University of Bologna, managed by a consortium of Italian universities with the support of the Ministry of Education, University and Research, the purpose AlmaLaurea is to act as a point of contact between businesses and graduates, a reference within universities for anyone (students, businesses, etc...) working in the field of university studies, employment and the condition of young people at different levels.

Average of similar study programmes (belonging to the same group)

Average of the Study Programmes (which belong to the subject group)

Calculated average which refers to all study programmes of the same cycle which belong to the subject group.

There are four groups, composed as follows:

- **BIOMEDICAL** group: Study Programmes of the Schools of Pharmacy, Biotechnology and Sport Science; Medicine; Agriculture and Veterinary Medicine
- **SCIENTIFIC-TECHNOLOGICAL** group: Study Programmes of the Schools of Engineering and Architecture; Sciences
- **SOCIAL SCIENCES** group: Study Programmes of the Schools of Economics, Management, and Statistics; Law, Political Sciences
- **HUMANITIES** group: Study Programmes of the Schools of Arts, Humanities, and Cultural Heritage; Foreign Languages and Literatures, Interpreting and Translation; Psychology and Education

CFU University Learning Credits

University Learning Credits (CFU) were introduced under Italian Ministerial Decree no. 509/99 to comply with European legislation, and are a measurement of the volume of learning, including individual study, required of students; generally 1 CFU corresponds to 25 hours of a student's "overall learning effort".

Class

Degree classes group together study programmes of the same level and with the same key learning outcomes and available learning activities for a given number of credits and in sectors which are identified as indispensable. The features of the classes are set nationally, by Ministerial Decree, and are therefore common to all universities.

Cohort

Cohort refers to a group of students enrolled in the same academic year.

Enrolment status

In terms of enrolment, students may be:

- **Regularly enrolled:** students enrolled for as many or fewer years than the legal duration of the study programme, who do not fall into any of the following categories;
- **Not aligned with the exam schedule:** students who, without having graduated, have enrolled in all the years of the study programme and which, for programmes with compulsory attendance, have obtained all attendance certificates;
- **Repeating:** students re-enrolling in the same year of a programme again. Starting from academic year 2009-2010, students who have not fulfilled the assigned additional learning requirements within the deadline have to enrol in the 1st year as repeating students.

Entrance exam

Enrolment in a study programme may be free access or restricted access.

For all programmes with restricted access, candidates are required to sit an entrance exam and there are a limited number of places available. The entrance exam is a test which is used to draw up a graded list of candidates; students may enrol in the programme according to their place in the list. The methods of managing the call for applications and the list of candidates, including the methods for filling any unclaimed places, may vary from year to year. The test may be specific to a Degree Programme or may be part of a single exam covering several programmes from the same university or from other universities (during the registration the students should indicate their first choice).

The following definitions apply:

Available places = the number of places laid down in the call for applications to the Study Programme, or determined by subsequent legal provisions; these exclude any additional places reserved according to special provisions of the programme (e.g. for international study programmes, they do not include places for foreign students selected from other universities; for all programmes with restricted access regulated nationally, these do not include the places reserved for transferring students).

Number of candidates for the exam = number of students registered for the exam indicating the study programme as their first choice;

Number of participants in the exam = number of students participating in the exam indicating the study programme as their first choice;

Number of participants in the exam for every available place = number of students participating in the exam who indicated the study programme as their first choice as a ratio of the number of places available on the programme.

First year enrolments

This includes all students enrolled in the first year, including those joining the study programme in its first year through transferrals, as well as those enrolled in the first year but not for the first time (e.g. repeating students).

New Careers

Students who start a new university career (excluding transfers) from year one in a second cycle programme.

Passages and transfers

Passage: when a student applies to move to a different study programme from the one enrolled in the previous year, within the same university.

Transfer: when a student transfers from a study programme in one university to any programme in another university.

Registered students

Students who begin a career in the Italian University System for the first time and who enrol in the first year (i.e. for whom no previous university careers are recorded) of a First Cycle (L509, L) or Single Cycle programme (LSCU, LMCU)

Statistical Observatory of the University of Bologna

The Statistical Observatory was founded in 1997 in order to “provide the university governing bodies with a reliable and timely documentary and monitoring database aiming to promote decision-making processes and planning, particularly of learning activities and other services targeting the student population” (art.1 of the Founding and Operational Regulation). Following the disabling of the Statistical Observatory, as resolved by the Board of Governors on 14 December 2010, from the second semester of academic year 2010-11 the survey and subsequently analysis of the attending students opinion is cared for the University of Bologna by Academic Affairs Division - Quality Assurance Department and Control and Finance Division - Support Planning and Evaluation Department. The overall results and the methods of collection and analysis are described in the document published online on the [Statistical Observatory of the University of Bologna](#).

University DataWarehouse

Information service for the managers of the University of Bologna organisational departments which gathers, integrates and reorganises data from various sources and makes it available for analysis and evaluation for the purposes of planning and decision-making.

Withdrawal

Suspension of studies by students who do not register in the next academic year, or who drop out from the degree programme.