

2013



ALMA MATER STUDIORUM  
UNIVERSITÀ DI BOLOGNA



School of Arts, Humanities, and Cultural Heritage – Ravenna Campus  
**LAUREA (FIRST CYCLE DEGREE/  
BACHELOR - 180 ECTS) IN CULTURAL  
HERITAGE A.Y. 2013/2014**  
Programme Director Prof. Luigi Tomassini

REPORT

Study Programme Report  
CULTURAL HERITAGE  
Programme ex D.M. 270/04 - Code 0886 - Class L-1  
School of Arts, Humanities, and Cultural Heritage – Ravenna Campus  
Programme Director Prof. Luigi Tomassini

Created in collaboration with Teaching and Learning Administrative Area (AFORM – Area della Formazione) – Quality Assurance Unit

Edited by AAGG – *University Web Portal Division* and CeSLA – *Web Technology Division*, with MultiPublishing technology

Release date: July 2013

Academic year of reference: 2013/2014

[www.unibo.it/QualityAssuranceEn](http://www.unibo.it/QualityAssuranceEn)

# INDICE

|   |    |
|---|----|
| <b>What is the Study Programme Report?</b> .....                              | 1  |
| <b>A. Presentation and prospects</b> .....                                    | 2  |
| A.1. Presentation .....   | 2  |
| A.2. Admission requirements .....   | 2  |
| A.3. Learning outcomes .....  | 3  |
| A.4. Career opportunities .....   | 4  |
| A.5. Opinion of social partners and potential employers .....                 | 4  |
| A.6. Further studies .....  | 4  |
| <b>B. Teaching and Learning</b> .....   | 5  |
| B.1. Course Structure Diagram .....   | 5  |
| B.2. Calendar and lecture timetable .....                                     | 5  |
| <b>C. Resources and services</b> .....  | 6  |
| C.1. Teachers .....   | 6  |
| C.2. Student services: offices .....  | 6  |
| C.2.1. Future students .....  | 6  |
| C.2.2. Enrolled students .....  | 6  |
| C.2.3. International students .....   | 6  |
| C.2.4. Graduates .....  | 6  |
| <b>D. The Study Programme in figures</b> .....                                | 7  |
| D.1. Students starting their university careers .....                         | 7  |
| D.1.1. Enrolments and registrations .....                                     | 7  |
| D.1.2. Additional data on students' starting their university careers .....   | 8  |
| D.1.2.1. Candidates registered for the entrance exam .....                    | 8  |
| D.1.2.2. Incoming students .....  | 8  |
| D.1.2.3. Additional Learning Requirements .....                               | 9  |
| D.2. Regularity of studies .....  | 10 |
| D.2.1. Students leaving the Programme between years 1 and 2 .....             | 10 |
| D.2.2. Regular graduates .....  | 11 |
| D.2.3. Additional data on regularity of studies .....                         | 12 |
| D.2.3.1. Credits obtained by students in the 1st year .....                   | 12 |
| D.2.3.2. Exams passed and average grade .....                                 | 13 |
| D.3. Opinions of graduates and attending students .....                       | 17 |
| D.3.1. Opinion of graduates .....   | 17 |
| D.3.2. Additional data on opinions of students .....                          | 18 |
| D.3.2.1. Opinion of attending students .....                                  | 18 |
| D.4. Entry into the world of work .....                                       | 19 |
| D.4.1. Employment situation .....   | 19 |
| D.5. Information on pre-reform programmes (DM 509/99) .....                   | 20 |
| D.5.1. Students starting their university careers .....                       | 20 |
| D.5.1.1. Enrolments and registrations .....                                   | 20 |
| D.5.1.2. Additional data on students' starting their university careers ..... | 20 |
| D.5.1.2.1. Candidates registered for the entrance exam .....                  | 20 |
| D.5.1.2.2. Incoming students .....  | 20 |
| D.5.2. Regularity of studies .....  | 20 |
| D.5.2.1. Students leaving the Programme between years 1 and 2 .....           | 20 |
| D.5.2.2. Regular graduates .....  | 21 |
| D.5.2.3. Additional data on regularity of studies .....                       | 23 |
| D.5.2.3.1. Credits obtained by students in the 1st year .....                 | 23 |
| D.5.2.3.2. Exams passed and average grade .....                               | 23 |

|  |           |
|--|-----------|
| D.5.3. Opinions of attending students and graduates .....          | 24        |
| D.5.3.1. Opinion of graduates .....                                | 24        |
| D.5.3.2 Additional data on opinions of students .....              | 26        |
| D.5.3.2.1. Opinion of attending students .....                     | 26        |
| D.5.4. Entry into the world of work .....                          | 27        |
| D.5.4.1. Employment situation .....                                | 27        |
| <b>E. Find out more: the quality of your Study Programme .....</b> | <b>31</b> |
| <b>F. Glossary terms .....</b>                                     | <b>34</b> |

## WHAT IS THE STUDY PROGRAMME REPORT?

### What is the Study Programme Report?

The Study Programme Report provides updated information which is important for the purposes of Quality Assurance and is published annually by the University of Bologna.

The main aspects of the teaching programme are described in detail, with a view to assuring the principle of transparency and promoting self-assessment and continuous improvement processes.

The document provides a concrete overview of the features and results of the Study Programme for students, families, employers and so on.

For example, regarding the current issue of employment, it describes the learning outcomes and career opportunities; it also includes statistics on the percentage of employed graduates (D.4. Employment situation).

The document is organised into five sections and a glossary:

### A. Presentation and prospects

Key information on the Study Programme, including the expected learning outcomes, career opportunities and further studies.

### B. Teaching and Learning

The updated course structure diagram with the full titles and listings of the course units and the latest published lecture timetable.

### C. Resources and services

The list of teaching staff and their relative curricula, the offices (secretariats), services (work placements) and infrastructures (libraries, laboratories) available to students.

### D. The Study Programme in Figures

Key data shows how many students are enrolled, how many have been assigned additional learning requirements, how many drop out after the first year, how many graduate in line with the programme schedule, the opinions of attending and graduating students on the teaching programmes and information concerning graduate employment.

### E. Find out more: the quality of your Study Programme

How the quality system applied to your Study Programme works. The quality system of your Study Programme is a set of processes and responsibilities adopted to guarantee the quality of all Study Programmes at the University of Bologna.

### NOTES:

- Reports are available for all Study Programmes for which it is possible to enrol in the first year in academic year 2012/2013: the information and data provided is as updated as possible.
- Sections A, B and C provide data for the academic year 2012/2013.
- Section D presents data regarding the Study Programmes in the last three academic years.
- The information and data were taken from the University databases and the reports published by the [Statistical Observatory of the University of Bologna](#) and [AlmaLaurea](#), and are updated to **15 June 2012**.

## A. PRESENTATION AND PROSPECTS

*This section presents the key information concerning the Study Programme, including the expected learning outcomes, career opportunities and further studies, updated to the academic year 2013/2014.*

### A.1. PRESENTATION

*This paragraph provides information on the specific learning outcomes of the Study Programme and the curriculum.*

This degree programme aims firstly to provide a basic training in the humanistic and philological, juridical, historical and anthropological disciplines which provide the background for an understanding of cultural heritage. In addition, to highlight the paths of the collective memory throughout history, there is a second set of disciplines, focusing on the cultural heritage.

These include the sciences of preservation, archaeology, history of art, musicology, archives and library science, cultural and physical anthropology, landscape and environment, computer science applied to cultural heritage; this is a further set of more specific technical subjects which allow the development of better targeted knowledge.

The complexity of the field of cultural heritage has led to the identification of three steps: the learning activities allowing the graduates to intervene in a highly complex and diversified subjects, which spans from “objects” of archaeological or art-historical interest to symbols, myths, sounds and intangible traditions; the need to select an individual programme in one of the many available fields which can satisfy the students; the need in any case to provide a set of technical knowledge gained also through specific training ships such as excavations or other field experiences, that are able to provide actual opportunities in the job market.

Graduates will acquire the ability to identify a specific cultural asset in the geographical and chronological area of the selected course programme, to recognise its state of preservation, to reconstruct and outline its context of origin. They will therefore be able to draw a plan to safeguard and promote it.

They will be able to understand the importance that heritage assets hold within the community, starting from a local dimension; in order to do so, they will be able to operate in both historical terms and in the analysis of the relationship between society and culture in the context they are working in.

They will also be able to organise the available data to assure the correct analysis of the asset, both with a view to cataloguing and for its historical description and critical analysis.

They will be able to produce technical reports, short summaries concerning excavation activities and archiving, as well as more complex texts, targeting a wider public, for the presentation, preservation and valorisation of the asset.

They will be familiar with the law and regulations framework of the cultural heritage, as well as with the softwares currently adopted by the institutions and organisations working in the field of cultural heritage, and will have a good command of at least one foreign language.

### A.2. ADMISSION REQUIREMENTS

*This paragraph provides information on the knowledge required for admission to the Study Programme.*

Admission requirements and evaluation

Applicants to the degree programme shall hold a five-year secondary school diploma or an equivalent suitable qualification obtained abroad. If the secondary school diploma has a duration of four years only, the missing year must be supplemented either with a further year, when possible, or with an additional learning requirement which the student will be assigned by the Programme Director.

Students shall also possess the skills and knowledge required in the study programme regulations.

These will be assessed on the basis of the score of the secondary school diploma, as described below:

- students enrolling with Italian secondary school diploma with a score of at least 70/100 (or an equivalent foreign diploma) do not need further assessment.
- students enrolling with an Italian secondary school diploma score of between 60 and 69/100 (or an equivalent foreign diploma) shall undergo an entrance verification through the following method:

individual oral exam concerning historical and linguistic capabilities

The entrance exam procedure will be decided upon by the Degree Programme Board / School Board and published on the University web site.

Additional learning requirements and relative testing

Students who do not pass the entrance exam will be assigned additional learning requirements, consisting of:

- individual activities in the fields of history and Italian language defined by the Degree Programme Board according to the specific results of each interview.

The additional learning requirements will be deemed to have been achieved:

following a specific test, which will be held on the days set by the Degree Programme Board, which will be published on the University web site.

Students who have not fulfilled the OFA by 20 September of the academic year of registration must enroll, in the following year, as “repeating students” in the first year of the degree programme.

### A.3. LEARNING OUTCOMES

*This paragraph provides information on the knowledge and skills students will have acquired by the end of the Programme.*

#### KNOWLEDGE AND UNDERSTANDING:

Graduates:

- will have a basic command of the basic subjects, such as: history, geography, anthropology, Italian Literature
- will have a general knowledge of the laws and regulations for the cultural heritage
- will have a general knowledge of preservation and computer sciences for the cultural heritage
- will have specific skills in a set of disciplines included in one of the available fields: archaeology, history of art, musicology, archives and library science, cultural and physical anthropology, landscape and environment.

The aforementioned knowledge and understanding are achieved by the students through the participation in lectures, supported, where necessary, by seminars, and through targeted tutoring as well as guided self-study and individual research, as required during the study programme, both in the subject areas which concern the background of cultural heritage (humanistic and philological, juridical, historical, geographic and anthropological) and in those specific activities in the fields of the science of preservation, archaeology, history of art, musicology, archives and library science, cultural and physical anthropology, landscape and environment.

Assessment of the achievement of the described learning outcomes shall be mainly tested through oral exams and presentations or possibly written tests.

#### ABILITY TO APPLY KNOWLEDGE AND UNDERSTANDING:

Graduates:

- will have a basic knowledge of preservation, archaeology, history of art, musicology, archives and library science, cultural and physical anthropology, landscape and environment, and will be able to apply the methods and techniques of these fields;
- will be able to design a general path of action to safeguard and promote a given cultural heritage;
- will be able to use the main soft-wares currently adopted by the institutions and organisations working in the field of cultural heritage.

The achievement of the ability to apply this knowledge and understanding will be accomplished through critical study stimulated by classroom activities and the recommended readings. The teaching tools used to achieve these skills within the core or the supplementary learning activities in the programme include the analysis and demonstration of more technical matters linked to historical, archaeological, artistic, archiving and library disciplines, personal research into case studies and the application of the methods demonstrated in the lectures, practical computer studies, in particular as part of the computer sciences applied to the cultural heritage, as well as individual and/or group projects and field work and the preparation of the final examination.

The tests, oral exams, laboratory work and/or archaeological excavations, as well as the preparation for the final examination imply the execution of specific tasks which aim to demonstrate the student's command of tools, methods and critical autonomy. During the field work activities, students will be assessed through the presentation of a report.

#### JUDGEMENT SKILLS:

Graduates:

- will be able to identify a specific cultural asset, to recognise its state of conservation and to reconstruct and outline its historical context of origin.
- will be able to acquire and organise the available data to assure the correct analysis of the asset, both with a view to cataloguing and for its historical description and critical analysis, as well as the correct preservation and use of the asset.

The acquisition of the above judgement skills is guaranteed by the learning activity focusing the importance of role of the cultural heritage within the community, starting from a local dimension, and in both historical terms and in the analysis of the relationship between society and culture, as well as more specific activities which allow the students to develop skills for the description, evaluation and organisation of the cultural heritage.

A constant approach which aims to allow the students to place the studied subjects in a social and cultural context and to evaluate autonomously the recommended readings studied on each occasion, will stimulate their autonomy, offering the best possibilities for development in the short dissertation, at the end of the traineeship, on which the final examination is carried out.

The acquisition of judgement skills is assessed through the evaluation of the students' individual study plan; during oral exams and through the presentation of reports; during seminar activities, where the ability to participate autonomously and in an original manner can also be assessed mutually among the students; during the report activities, at the end of the traineeship, and the dissertation presented for the final examination.

#### COMMUNICATION SKILLS:

Graduates:

- will be able to produce documents and information materials, technical reports and activity reports on excavations, archiving and laboratory work bearing in mind the context and the audience;

- will have a command of a European language to B1 level.

Oral communication skills are developed in particular during all learning activities which require the presentation of the knowledge acquired, oral exams and reports on seminar activities; written communication skills are developed during learning activities which require the production of reports and written documents (traineeship, practical exercises, final dissertation). The tutoring activities foreseen for the production of the dissertation for the final examination shall in any case constitute the most important learning activity for the achievement of these skills. The study plan also includes learning activities in foreign languages, which will broaden the students' communication skills.

The acquisition of the above communication skills will also be assessed and evaluated during the exams, through the production and presentation of the dissertation for the final examination, and through the reports produced in the traineeship activities. Foreign language skills are verified through a specific test.

#### LEARNING SKILLS:

Graduates:

- will be able to increase their knowledge in particular in one of the following fields: archaeological and marine archaeological heritage, historical-artistic heritage, musical heritage, libraries and archives, heritage of the civilisations of Venice and the Levant (12th-18th centuries), heritage of Eastern Europe and the Mediterranean, heritage of the ancient Middle-East, anthropological heritage, environmental and landscape heritage.

Learning skills are acquired and assessed throughout the study period, particularly concerning self-study, which stimulates the organisation and review of study methods, and supplementary activities which include the study and orientation towards specific methodologies in certain sectors of the cultural heritage and the activities implemented in preparation of the final examination, which sets out in particular to verify the bibliographic research and the consequent ability to understand new information and develop programming skills.

## A.4. CAREER OPPORTUNITIES

*This paragraph provides information on the occupational profile, functions and fields of employment available to graduates of this Programme.*

Graduates will fit in the following professional roles and relative functions in the listed fields of employment:

#### CULTURAL HERITAGE WORKER

(with particular reference to the following sectors: archaeological and marine archaeological heritage, historical-artistic heritage, musical heritage, libraries and archives, heritage of the civilisations of Venice and the Levant (12th-18th centuries), heritage of Eastern Europe and the Mediterranean, heritage of the ancient Middle-East, anthropological heritage, environmental and landscape heritage.

Functions:

- Collaboration in the design of valorisation and promotion initiatives, activities and events in the field of cultural heritage;
- Direct participation in the management of activities in the field of cultural heritage;
- Collaboration for dissemination, raising awareness and education in the field of cultural heritage, developing and implementing specific interventions for distinct recipient groups;
- Contribution to activities concerning preservation, documentation, cataloguing and bibliographic research;
- Production of information and promotional materials.

Career opportunities:

Employed by or freelance consultant working for:

Business consulting companies and cooperatives working to contract, institutes and public and private authorities (Museums, Libraries, Archives, archaeological parks, local authorities, Ministries and Superintendencies) in the tertiary sector of cultural heritage, in the fields of archaeological, historic-artistic, musical, archiving and library, anthropological and environmental/landscaping.

## A.5. OPINION OF SOCIAL PARTNERS AND POTENTIAL EMPLOYERS

*This paragraph describes the outcome of the consultation with the representative employment and trade organisations.*

This information is not available in English at this time.

## A.6. FURTHER STUDIES

It gives access to second cycle studies (laurea specialistica/magistrale) and master universitario di primo livello.



## B. TEACHING AND LEARNING

*This section describes the updated course structure diagram (for academic year 2013/2014), with the full titles and listings of the course units and the latest published lecture timetable.*

### B.1. COURSE STRUCTURE DIAGRAM

*The link takes you to the Study Programme course structure diagrams. You can also access to each course unit content.*

- [Study plan: all course units in the programme](#)

### B.2. CALENDAR AND LECTURE TIMETABLE

*The links take you to the teaching calendar (exam session and final examination session) and the lecture timetable (in Italian).*

- [Lecture timetable](#)
- [Exam sessions](#)
- [Final examination sessions](#)

## C. RESOURCES AND SERVICES

*This section provides a list of teaching staff and their relative curricula and and description of the services available to students for the academic year 2013/2014.*

### C.1. TEACHERS

*The paragraph lists the lecturers who teach in the Study Programme: from here you can access the personal web pages of each one. Information updated to 28 May 2013 (in Italian).*

#### **Permanent teaching staff:**

|   |   |   |                                     |
|---|---|---|-------------------------------------|
| <a href="#">Aicardi, Nicola</a>         | <a href="#">Cottignoli, Alfredo</a>           | <a href="#">Guidobaldi, Nicoletta</a>   | <a href="#">Pompilio, Angelo</a>    |
| <a href="#">Andreolli, Bruno</a>        | <a href="#">Curci, Antonio</a>                | <a href="#">Iannucci, Alessandro</a>    | <a href="#">Restani, Donatella</a>  |
| <a href="#">Augenti, Andrea</a>         | <a href="#">David, Max Victor</a>             | <a href="#">Lepore, Giuseppe</a>        | <a href="#">Savigni, Raffaele</a>   |
| <a href="#">Baldacchini, Lorenzo</a>    | <a href="#">De Maria, Sandro</a>              | <a href="#">Lorusso, Salvatore</a>      | <a href="#">Secci, Raimondo</a>     |
| <a href="#">Beretta, Marco</a>          | <a href="#">De Nicolò, Maria Lucia</a>        | <a href="#">Marchetti, Elisabetta</a>   | <a href="#">Tomassini, Luigi</a>    |
| <a href="#">Callieri, Pierfrancesco</a> | <a href="#">Degni, Paola</a>                  | <a href="#">Martelli, Fabio</a>         | <a href="#">Tosi, Maurizio</a>      |
| <a href="#">Canetti, Luigi</a>          | <a href="#">Faraggiana di Sarzana, Chiara</a> | <a href="#">Morelli, Anna</a>           | <a href="#">Tronchin, Lamberto</a>  |
| <a href="#">Cattani, Maurizio</a>       | <a href="#">Francesca</a>                     | <a href="#">Muccioli, Federicomaria</a> | <a href="#">Turchini, Angelo</a>    |
| <a href="#">Cavallini, Eleonora</a>     | <a href="#">Fiori, Cesare</a>                 | <a href="#">Neve, Mario Angelo</a>      | <a href="#">Tusini, Gian Luca</a>   |
| <a href="#">Cecchi, Paolo</a>           | <a href="#">Funaioli, Maria Paola</a>         | <a href="#">Perani, Mauro</a>           | <a href="#">Vandini, Mariangela</a> |
| <a href="#">Citti, Francesco</a>        | <a href="#">Ghelfi, Barbara</a>               | <a href="#">Pescerelli, Beatrice</a>    | <a href="#">Vespignani, Giorgio</a> |
| <a href="#">Comellini, Carla</a>        | <a href="#">Giorgetti, Dario</a>              | <a href="#">Piras, Andrea</a>           |                                     |
| <a href="#">Cosentino, Salvatore</a>    | <a href="#">Gnoli, Tommaso</a>                | <a href="#">Pizzirani, Chiara</a>       |                                     |
|   | <a href="#">Grupponi, Giorgio</a>             |   |                                     |

#### **Contract teaching staff:**

[Biscioni, Raffaella](#)  
[Cottino, Alberto](#)  
[Latini, Elena](#)  
[Morgante, Michela](#)  
[Pellegrino, Angelo](#)  
[Pini, Raffaella](#)  
[Taddei, Alessandro](#)  
[Ziosi, Antonio](#)

### C.2. STUDENT SERVICES: OFFICES

#### C.2.1. FUTURE STUDENTS

*The link take you to the webpage which provides specific information about the offices and the services for the future students (in Italian).*

- [Future students](#)

#### C.2.2. ENROLLED STUDENTS

*The link take you to the webpage with the information on the offices and the services for the enrolled students (in Italian).*

- [Enrolled students](#)

#### C.2.3. INTERNATIONAL STUDENTS

*The link take you to the webpage with the information on the offices and the services for the international students (in Italian).*

- [International students](#)

#### C.2.4. GRADUATES

*The link take you to the webpage with the information on the offices and the services for the graduates (in Italian).*

- [Graduates](#)

## D. THE STUDY PROGRAMME IN FIGURES

Information on students' starting their university careers, how many students are in line with the regular programme, opinions of students and graduates on the teaching programmes and information concerning graduate employment.

This section provides the data of the last academic years for the Study Programme (SP) and a comparison with similar Study Programmes. The University of Bologna has divided its Study Programmes into four groups:

- **BIOMEDICAL** group: Study Programmes of the Schools of Pharmacy, Biotechnology and Sport Science; Medicine; Agriculture and Veterinary Medicine
- **SCIENTIFIC-TECHNOLOGICAL** group: Study Programmes of the Schools of Engineering and Architecture; Sciences
- **SOCIAL SCIENCES** group: Study Programmes of the Schools of Economics, Management, and Statistics; Law, Political Sciences
- **HUMANITIES** group: Study Programmes of the Schools of Arts, Humanities, and Cultural Heritage; Foreign Languages and Literatures, Interpreting and Translation; Psychology and Education

The section presents the results of the Study Programme for the last three academic years.

Main data shows how many students enrolled, the number of students assigned OEA, how many drop out after the first year, how many graduate in line with the programme schedule, the opinions of attending and graduating students on the teaching programmes and information concerning graduate employment.

The information and data presented in this section, updated to 28 May 2013, were taken from University databases and *AlmaLaurea*.

Study Programmes may be subject to degree programme system modifications from one academic year to the next, and the data provided in this section may refer to a programme with a slightly different system to the one currently running (such as programme title, course structure diagram and list of lecturers). However, indicatively the data presents the general trend of the Study Programme over the past three years.

Most of the Study Programmes running at the University of Bologna have been reformed in compliance with DM 270/04, most of them from the academic year 2008/2009. In the reports provided for these Programmes, paragraph D.5. refers to the Study Programmes as they were presented prior to the reform.

### D.1. STUDENTS STARTING THEIR UNIVERSITY CAREERS

Characteristics of incoming students at the beginning of their university careers. Tables and graphs provide information on the number of registered students, focusing on the characteristics of the students, results of any entrance tests and the students assigned any additional learning requirements.

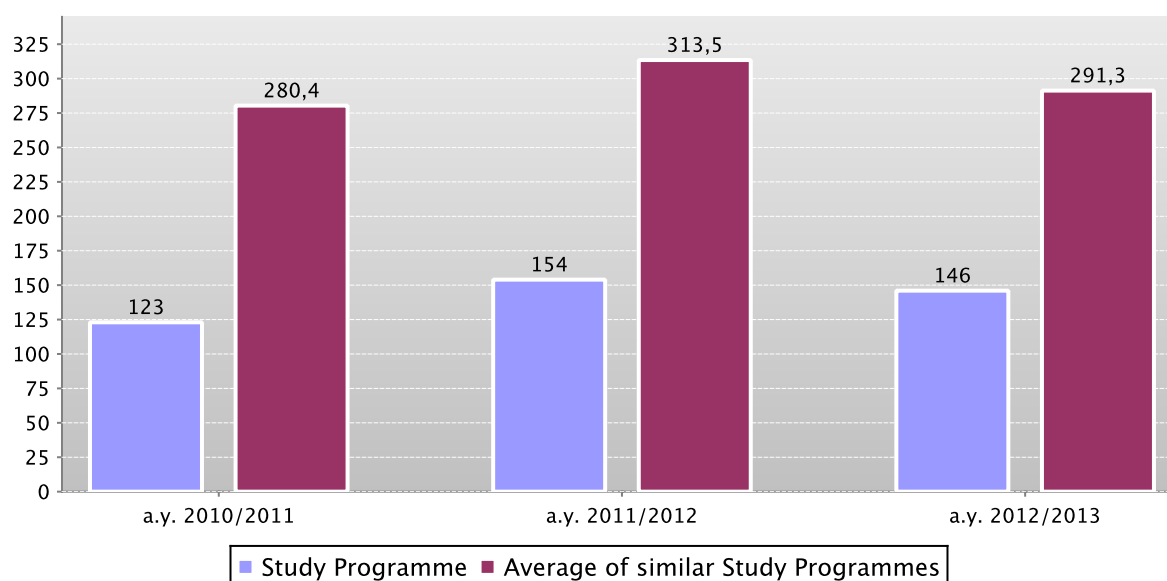
#### D.1.1. ENROLMENTS AND REGISTRATIONS

The **graph** shows the number of students enrolled in the 1st year compared with the average of similar Study Programmes (which belong to the same group).

In addition, the **table** shows the total number of registered students and the total number of enrolled students.

Data of the Study Programme is compared with the average of the Study Programmes of average of similar Study Programmes (which belong to the same group) for the indicated academic years.

First year enrolments



|                                     | a.y. 2010/2011      |                          |                            | a.y. 2011/2012      |                          |                            | a.y. 2012/2013      |                          |                            |
|-------------------------------------|---------------------|--------------------------|----------------------------|---------------------|--------------------------|----------------------------|---------------------|--------------------------|----------------------------|
|                                     | Registered students | N. first year enrolments | Total N. enrolled students | Registered students | N. first year enrolments | Total N. enrolled students | Registered students | N. first year enrolments | Total N. enrolled students |
| Study Programme                     | 105                 | 123                      | 410                        | 131                 | 154                      | 467                        | 125                 | 146                      | 479                        |
| Average of similar Study Programmes | 231,5               | 280,4                    | 380,7                      | 263,1               | 313,5                    | 373,9                      | 247,4               | 291,3                    | 358,7                      |

## D.1.2. ADDITIONAL DATA ON STUDENTS' STARTING THEIR UNIVERSITY CAREERS

### D.1.2.1. CANDIDATES REGISTERED FOR THE ENTRANCE EXAM

In academic year 2012/2013 access to this Study Programme was not restricted.

### D.1.2.2. INCOMING STUDENTS

Geographic origin, type of high school certificate, age and gender of students.

Data shows a homogeneous group of students (*cohort*) which started together their academic career. Students which have passed to an other Study Programme, transferred from an other university, or registered to a 2nd degree are not included.

The **tables** show the number, geographic origin, gender, age, type and grade of high school certificate of students enrolling in the degree programme.

Data of the Study Programme is compared with the average of the Study Programmes of *average of similar Study Programmes* (which belong to the same group) for the indicated academic years.

|                    | Registered students                 | Geographic origin   |   |   |  |                             | Gender |       | Average age of registered students |         |            |       |
|--------------------|-------------------------------------|---|---|---|--|-----------------------------|--------|-------|------------------------------------|---------|------------|-------|
|                    |                                     | Students coming from the province of the Study Programme site | Students coming from other provinces where Unibo has a site | Students coming from other provinces of Emilia Romagna region | Students coming from other Italian regions | Students coming from abroad | M      | F     | 19 or less                         | 20 - 24 | 25 or more |       |
| Students 2010/2011 | Study Programme                     | 105   | 16,2%   | 41,0%   | 9,5%                                       | 27,6%                       | 5,7%   | 21,0% | 79,0%                              | 64,8%   | 23,8%      | 11,4% |
|                    | Average of similar Study Programmes | 231,5   | 21,9%   | 16,3%   | 16,3%                                      | 42,9%                       | 2,6%   | 27,6% | 72,4%                              | 60,8%   | 31,4%      | 7,8%  |
| Students 2011/2012 | Study Programme                     | 131   | 18,3%   | 32,1%   | 14,5%                                      | 30,5%                       | 4,6%   | 22,9% | 77,1%                              | 67,2%   | 27,5%      | 5,3%  |
|                    | Average of similar Study Programmes | 263,1   | 20,5%   | 16,6%   | 15,4%                                      | 45,0%                       | 2,5%   | 29,5% | 70,5%                              | 61,4%   | 33,2%      | 5,4%  |
| Students 2012/2013 | Study Programme                     | 125   | 14,4%   | 34,4%   | 8,0%                                       | 34,4%                       | 8,8%   | 16,0% | 84,0%                              | 60,8%   | 29,6%      | 9,6%  |
|                    | Average of similar Study Programmes | 247,4   | 20,7%   | 15,4%   | 14,7%                                      | 45,9%                       | 3,3%   | 29,1% | 70,9%                              | 61,3%   | 32,8%      | 5,8%  |

|                    |                                     | High school certificate |                    |   |   |                                       | Grade of High school        |                             |                             |                              |
|--------------------|-------------------------------------|-------------------------|--------------------|---|---|---------------------------------------|-----------------------------|-----------------------------|-----------------------------|------------------------------|
|                    |                                     | Vocational schools      | Technical Colleges | High school specializing in education and in psycho-pedagogical science | High schools specializing in classical studies, modern languages, science education | Other Italian or foreign high schools | Grade ranging from 60 to 69 | Grade ranging from 70 to 79 | Grade ranging from 80 to 89 | Grade ranging from 90 to 100 |
| Students 2010/2011 | Study Programme                     | 13,3%                   | 12,4%              | 5,7%  | 56,2%   | 12,4%                                 | 27,6%                       | 32,4%                       | 24,8%                       | 15,2%                        |
|                    | Average of similar Study Programmes | 9,5%                    | 16,3%              | 8,5%  | 57,8%   | 8,0%                                  | 25,6%                       | 31,1%                       | 23,7%                       | 19,1%                        |
| Students 2011/2012 | Study Programme                     | 17,6%                   | 10,7%              | 13,7%   | 50,4%   | 7,6%                                  | 13,0%                       | 38,9%                       | 29,8%                       | 18,3%                        |
|                    | Average of similar Study Programmes | 8,9%                    | 13,4%              | 14,7%   | 55,8%   | 7,1%                                  | 24,0%                       | 32,8%                       | 23,0%                       | 19,4%                        |
| Students 2012/2013 | Study Programme                     | 15,2%                   | 12,8%              | 7,2%  | 55,2%   | 9,6%                                  | 22,4%                       | 37,6%                       | 24,8%                       | 15,2%                        |
|                    | Average of similar Study Programmes | 8,2%                    | 13,1%              | 14,4%   | 55,3%   | 8,9%                                  | 24,9%                       | 28,5%                       | 23,7%                       | 18,1%                        |

#### D.1.2.3. ADDITIONAL LEARNING REQUIREMENTS

Students on the programme assigned **additional learning requirements** (OFA). OFA are learning requirements assigned to enrolled students who have not demonstrated the full possession of the entrance requirements. The assessment methods of students' initial preparation and the fulfilment of the OFA are described in the Study Programme Regulations, and may change each year. Students not completing the additional learning requirements are obliged to re-enrol in year 1 as repeating students.

The **table** shows the number of **registered students**, the number of students assigned OFA, the number who fulfilled them, the percentage of students assigned the OFA compared to the number of enrolled students and the percentage fulfilling the OFA compared to those assigned them.

|                    | Registered students (a) | Students assigned OFA (b) | Students who fulfilled OFA (c) | % of students assigned OFA compared to the number of enrolled students (b/a) | % of students fulfilling the OFA compared to number of students assigned (c/b) |
|--------------------|-------------------------|---------------------------|--------------------------------|--|--|
| Students 2010/2011 | 105                     | 12                        | 9                              | 11,4%  | 75,0%  |
| Students 2011/2012 | 131                     | 0                         |                                |  |  |
| Students 2012/2013 | 125                     | 16                        |                                |  |  |

\*Note: At the time of publication of this report the number of students fulfilling the OFA can be measured for a.y. 2009/2010 and a.y. 2010/2011 only.

## D.2. REGULARITY OF STUDIES

*Insight into the regularity with which the students pass their exams.*

*Graphs and tables provide information on the number of students who leave the programme after the first year and the number of regular graduates, focusing on the number of credits obtained at the end of the first year, on the exams passed and average grade achieved for each course unit.*

### D.2.1. STUDENTS LEAVING THE PROGRAMME BETWEEN YEARS 1 AND 2

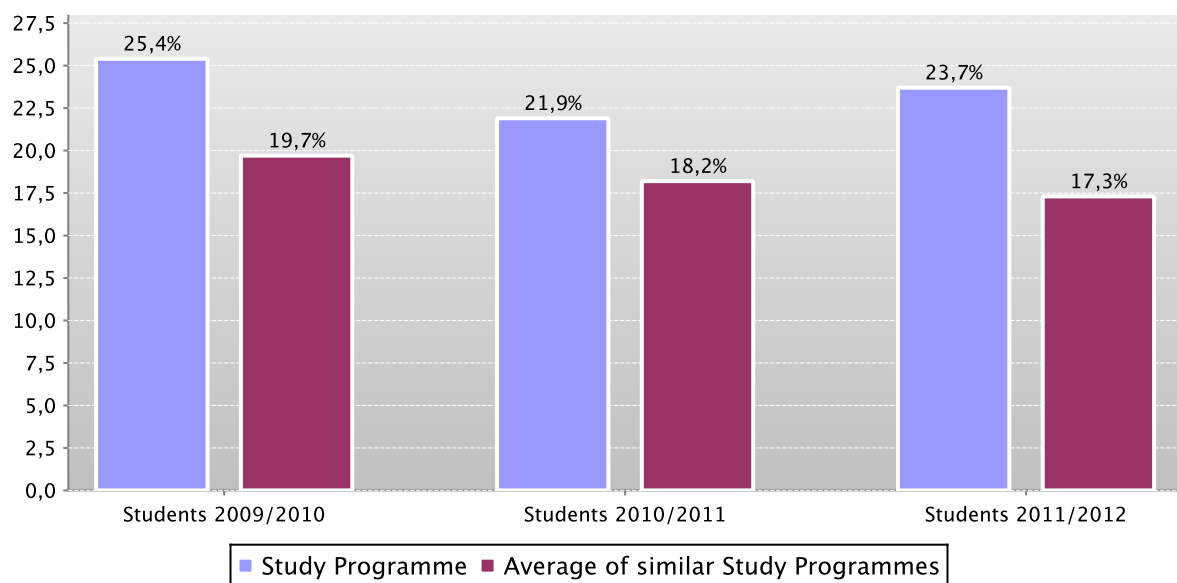
Here the number of students leaving the Study Programme is shown.

The **graph** shows the percentage of students who leave the programme after the first year compared to the average of similar Study Programmes (belonging to the same group).

The **table** shows the registered students, the percentage of students leaving the programme who pass to a different Study Programme in the same university, transfer to another university or withdraw from studies, as well as the enrolled repeating students and those enrolled in the second year.

The Study Programme data is compared with the average of similar Study Programmes of (which belong to the same group), for students registered in the indicated academic years.

Percentage of withdrawals between years 1 and 2



|                    |                                     | Registered students | % withdrawals | % passages and transfers | % repeating students | Students enrolled in the second year |
|--------------------|-------------------------------------|---------------------|---------------|--------------------------|----------------------|--------------------------------------|
| Students 2009/2010 | Study Programme                     | 130                 | 25,4%         | 3,8%                     | 0,8%                 | 91                                   |
|                    | Average of similar Study Programmes | 189,8               | 19,7%         | 5,6%                     | 0,4%                 | 141,1                                |
| Students 2010/2011 | Study Programme                     | 105                 | 21,9%         | 0,0%                     | 4,8%                 | 77                                   |
|                    | Average of similar Study Programmes | 231,5               | 18,2%         | 5,9%                     | 1,4%                 | 172,5                                |
| Students 2011/2012 | Study Programme                     | 131                 | 23,7%         | 6,9%                     | 0,0%                 | 91                                   |
|                    | Average of similar Study Programmes | 263,1               | 17,3%         | 6,1%                     | 0,5%                 | 200,4                                |

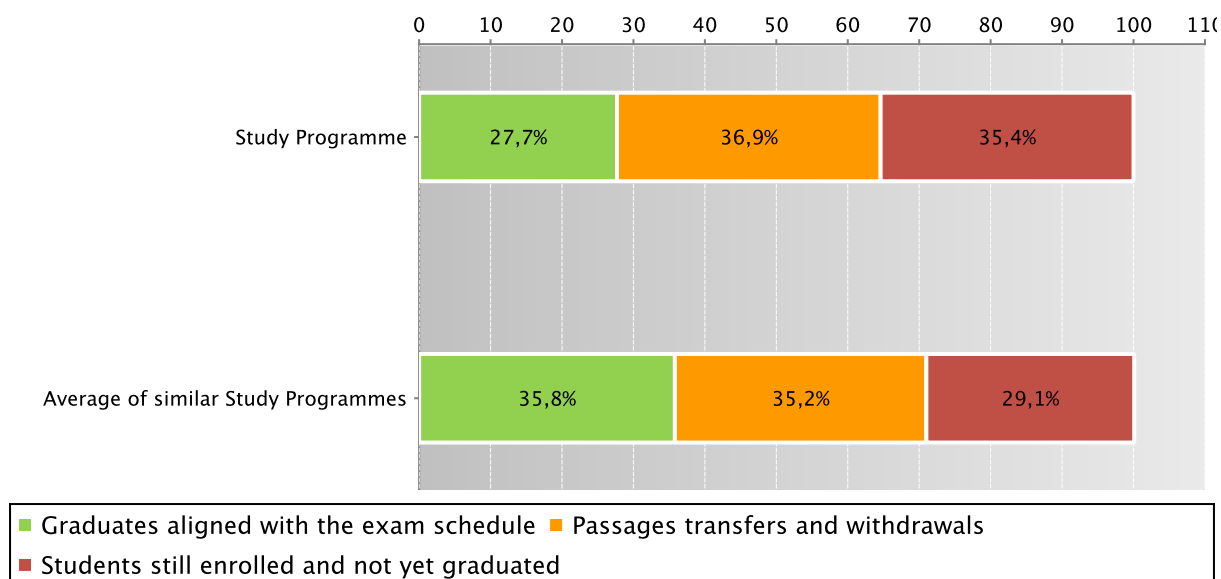
## D.2.2. REGULAR GRADUATES

Here you will find information on regular graduates, on how many students, at the end of the regular programme duration, left the programme and how many are still enrolled but **not aligned to the exam schedule**.

The **graph** and the **table** show the situation concerning **registered students** for the indicated academic year, at the end of the regular duration of the Study Programme, highlighting the percentage of regular graduates, the number of students still enrolled (**not aligned to the exam schedule** and **repeating students**), students who have left the programme (including **passages**, **transfers** and **withdrawals**).

The Study Programme data is compared with the average of **similar Study Programmes** (which belong to the same group) for students registered in the indicated academic years.

Situation of students 2009/2010 at the end of regular duration of the study programme



|                    | Registered students                 | Regular graduates |      | Passages transfers and withdrawals |      | Students still enrolled and not yet graduated |      |       |
|--------------------|-------------------------------------|-------------------|------|------------------------------------|------|---|------|-------|
|                    |                                     | N.                | %    | N.                                 | %    | N.  | %    |       |
| Students 2008/2009 | Study Programme                     | 138               | 46   | 33,3%                              | 50   | 36,2%   | 42   | 30,4% |
|                    | Average of similar Study Programmes | 188,1             | 66,7 | 35,4%                              | 63,1 | 33,5%   | 58,3 | 31,0% |
| Students 2009/2010 | Study Programme                     | 130               | 36   | 27,7%                              | 48   | 36,9%   | 46   | 35,4% |
|                    | Average of similar Study Programmes | 189,8             | 67,9 | 35,8%                              | 66,7 | 35,2%   | 55,2 | 29,1% |

See data of previous academic years – Study Programme D.M. 509/99 Eastern European and Mediterranean Civilizations (code 0019), Historic-artistic and Musical Heritage (code 0401), Archaeological Heritage (code 0546) [paragraph D.5.2.2.](#)

### D.2.3. ADDITIONAL DATA ON REGULARITY OF STUDIES

#### D.2.3.1. CREDITS OBTAINED BY STUDENTS IN THE 1ST YEAR

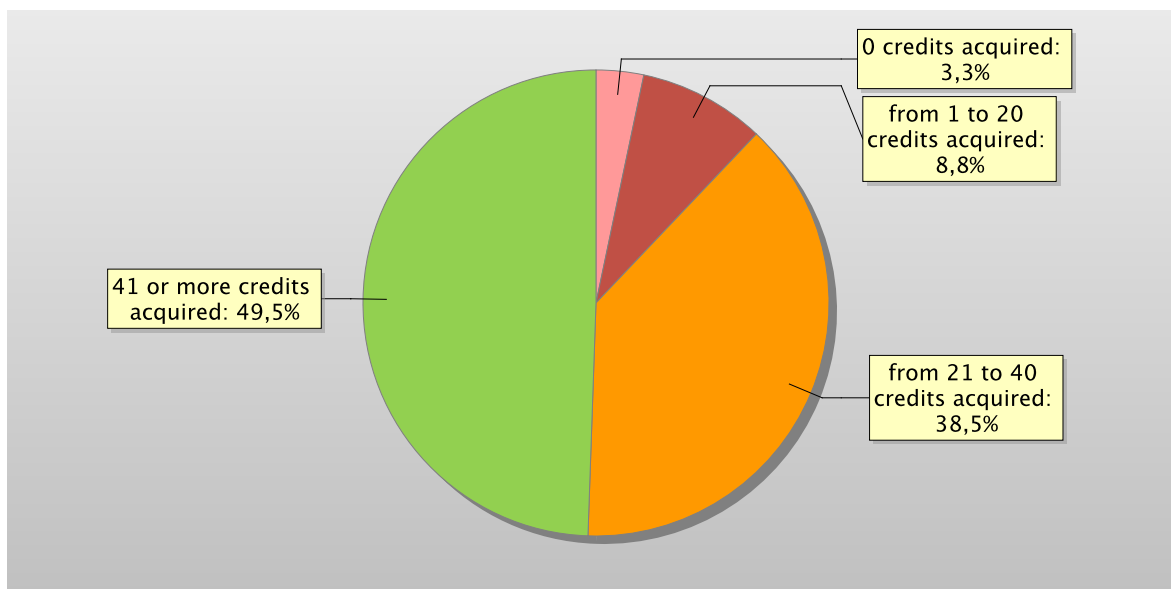
This offers an insight into how regularly students pass their exams.

The **graph** shows the distribution of the students according to the number of **credits** obtained at the end of the first year.

In addition, the **table** shows the number of students registered at the second year and average **credits** obtained during the first year.

The Study Programme data is compared with the average of **similar Study Programmes** (which belong to the same group) for the indicated academic years.

Distribution of the students in 2011/2012 according to the number of credits obtained at the end of the first year\*



|                    |                                     | Students enrolled in the 2nd year | % students with *  |                               |                                |                             | Average credits per student |
|--------------------|-------------------------------------|-----------------------------------|--------------------|-------------------------------|--------------------------------|-----------------------------|-----------------------------|
|                    |                                     |                                   | 0 credits acquired | from 1 to 20 credits acquired | from 21 to 40 credits acquired | 41 or more credits acquired |                             |
| Students 2009/2010 | Study Programme                     | 91                                | 6,6%               | 14,3%                         | 31,9%                          | 47,3%                       | 35,1                        |
|                    | Average of similar Study Programmes | 148,9                             | 3,5%               | 11,2%                         | 30,7%                          | 54,6%                       | 40,2                        |
| Students 2010/2011 | Study Programme                     | 77                                | 7,8%               | 5,2%                          | 44,2%                          | 42,9%                       | 36,2                        |
|                    | Average of similar Study Programmes | 172,5                             | 3,7%               | 9,8%                          | 31,0%                          | 55,6%                       | 40,6                        |
| Students 2011/2012 | Study Programme                     | 91                                | 3,3%               | 8,8%                          | 38,5%                          | 49,5%                       | 36,3                        |
|                    | Average of similar Study Programmes | 200,4                             | 2,9%               | 8,7%                          | 29,0%                          | 59,4%                       | 42                          |

\*Note: by convention, credits are considered to be obtained by students by 31st October of the year following the year of enrolment.



## D.2.3.2. EXAMS PASSED AND AVERAGE GRADE

The **table** shows number of exams passed and average grade achieved for each course unit in the calendar year 2011. Marks for the exams passed are expressed out of thirty.

The data refers to the course unit code and therefore includes the various branches of the programme divided into channels or sub-groups, divided by letter.

It considers all subjects for which a grade is assigned, and therefore excludes all those to which a pass/fail score is allocated.

*Data of the Study Programme D.M. 270/04 Beni culturali (code 0886)*

|  | N. of exams passed | Average grade * |
|--|--------------------|-----------------|
| 00044 ANTROPOLOGIA                                     | 30                 | 28,6            |
| 00045 ANTROPOLOGIA CULTURALE                           | 3                  |                 |
| 00049 ARCHEOLOGIA E STORIA DELL'ARTE GRECA E ROMANA    | 29                 | 28              |
| 00348 ETRUSCOLOGIA                                     | 1                  |                 |
| 00455 GEOGRAFIA  | 6                  | 26,7            |
| 00460 GEOGRAFIA I                                      | 4                  |                 |
| 00555 LETTERATURA CRISTIANA ANTICA                     | 16                 | 27,3            |
| 00562 LETTERATURA ITALIANA                             | 72                 | 24,7            |
| 00603 LINGUA E LETTERATURA LATINA                      | 1                  |                 |
| 00759 PALEONTOLOGIA UMANA                              | 19                 | 28,6            |
| 00929 STORIA MODERNA                                   | 14                 | 29,9            |
| 00932 STORIA CONTEMPORANEA                             | 10                 | 27,9            |
| 00938 STORIA DEL CRISTIANESIMO                         | 17                 | 27,1            |
| 00950 STORIA DELL'ARTE BIZANTINA                       | 17                 | 27,2            |
| 00951 STORIA DELL'ARTE CONTEMPORANEA                   | 32                 | 28              |
| 00981 STORIA DELLA SCIENZA                             | 5                  |                 |
| 00996 STORIA GRECA                                     | 19                 | 26,5            |
| 01007 STORIA MODERNA II                                | 15                 | 29,7            |
| 01009 STORIA ROMANA                                    | 17                 | 27,5            |
| 01090 STORIA BIZANTINA II                              | 1                  |                 |
| 02110 STORIA ROMANA I                                  | 1                  |                 |
| 02196 STORIA GRECA I                                   | 4                  |                 |
| 02210 STORIA ROMANA II                                 | 12                 | 28,6            |
| 02232 STORIA DELL'ARTE MODERNA II                      | 6                  | 27,5            |
| 02249 ARCHEOLOGIA E STORIA DELL'ARTE GRECA E ROMANA II | 15                 | 27,9            |
| 02250 STORIA DELL'ARTE BIZANTINA II                    | 12                 | 27,8            |
| 02290 STORIA DELL'ARTE MODERNA                         | 22                 | 28              |
| 02296 STORIA GRECA II                                  | 6                  | 29,3            |
| 02604 EGITTOLOGIA                                      | 29                 | 27,6            |
| 03342 STORIA CONTEMPORANEA II                          | 15                 | 28,6            |
| 03507 TEORIA MUSICALE                                  | 3                  |                 |
| 03527 ETNOMUSICOLOGIA                                  | 1                  |                 |
| 03541 STORIA DEL CINEMA                                | 2                  |                 |
| 03618 ARCHEOLOGIA E STORIA DELL'ARTE GRECA             | 2                  |                 |
| 03619 ARCHEOLOGIA E STORIA DELL'ARTE ROMANA            | 1                  |                 |
| 03991 ANTROPOLOGIA CULTURALE I                         | 1                  |                 |

|  | N. of exams passed | Average grade * |
|--|--------------------|-----------------|
| 04159 ANTICHITA' CELTICHE                          | 4                  |                 |
| 04272 STORIA DELL'ARTE CONTEMPORANEA II            | 29                 | 28              |
| 04324 ECOLOGIA PREISTORICA                         | 2                  |                 |
| 04346 TOPOGRAFIA ANTICA                            | 21                 | 26              |
| 04349 EBRAICO                                      | 2                  |                 |
| 04360 STORIA BIZANTINA                             | 18                 | 28,2            |
| 04926 ARCHEOLOGIA FENICIO-PUNICA I                 | 1                  |                 |
| 04927 ARCHEOLOGIA FENICIO-PUNICA II                | 5                  |                 |
| 04954 EGITTOLOGIA I                                | 4                  |                 |
| 06938 STORIA DELLA MUSICA MODERNA                  | 5                  |                 |
| 06940 STORIA DELLA MUSICA MODERNA II               | 1                  |                 |
| 07020 ARCHEOLOGIA SUBACQUEA                        | 8                  | 27,5            |
| 07021 ARCHEOMETRIA                                 | 5                  |                 |
| 07052 CHIMICA DEL RESTAURO                         | 5                  |                 |
| 07078 ARCHIVISTICA GENERALE E STORIA DEGLI ARCHIVI | 10                 | 29,9            |
| 07490 ARCHEOLOGIA E STORIA DELL'ARTE IRANICA       | 18                 | 28,2            |
| 08473 LINGUA E LETTERATURA GRECA                   | 3                  |                 |
| 08482 METODOLOGIA DELLA RICERCA ARCHEOLOGICA       | 64                 | 28,1            |
| 09379 TOPOGRAFIA ANTICA II                         | 1                  |                 |
| 09617 NUMISMATICA GRECA E ROMANA                   | 10                 | 27,2            |
| 10067 ICONOLOGIA E ICONOGRAFIA                     | 7                  | 29,4            |
| 10439 METODOLOGIA DELLA STORIA DELL'ARTE           | 25                 | 27,2            |
| 10699 DRAMMATURGIA DEL MONDO GRECO E ROMANO        | 8                  | 27,5            |
| 10702 ARCHEOLOGIA DELLA TARDA ANTICHITA'           | 7                  | 28,6            |
| 10855 STORIA DEL RESTAURO                          | 6                  | 27,3            |
| 10876 STORIA CONTEMPORANEA A                       | 10                 | 28,5            |
| 10898 MUSEOGRAFIA E MUSEOTECNICA                   | 41                 | 28,6            |
| 11219 STORIA DELLA MUSICA CONTEMPORANEA            | 1                  |                 |
| 11378 ARCHEOLOGIA MEDIEVALE                        | 13                 | 26,9            |
| 11379 STORIA MEDIEVALE                             | 45                 | 29              |
| 11382 STORIA DELL'ARTE MEDIEVALE                   | 26                 | 28,5            |
| 11408 ARCHEOLOGIA CLASSICA                         | 3                  |                 |
| 11521 ANTROPOLOGIA I                               | 4                  |                 |
| 11686 STORIA MEDIEVALE A                           | 7                  | 29,9            |
| 11687 STORIA MODERNA A                             | 25                 | 29,7            |
| 11692 STORIA ROMANA A                              | 4                  |                 |
| 12048 STORIA DELL'ARTE MEDIEVALE II                | 10                 | 29,1            |
| 12481 ARCHEOLOGIA MEDIEVALE II                     | 9                  | 28,7            |
| 12602 GEOGRAFIA CULTURALE                          | 32                 | 28,4            |
| 13653 STORIA DEL RESTAURO II                       | 6                  | 28,5            |
| 13774 STORIA MEDIEVALE I                           | 1                  |                 |
| 13775 STORIA MEDIEVALE II                          | 12                 | 28,9            |
| 13812 STORIA DEL MEDITERRANEO IN ETA' MODERNA      | 7                  | 28,3            |

|   | N. of exams passed | Average grade * |
|---|--------------------|-----------------|
| 14402 PREISTORIA E PROTOSTORIA                                  | 11                 | 28,6            |
| 15130 ACUSTICA MUSICALE   | 6                  | 26,8            |
| 15133 CONSERVAZIONE E TRATTAMENTO DEI MATERIALI                 | 18                 | 27,4            |
| 15137 STORIA E TECNICA DELLA FOTOGRAFIA E DEGLI AUDIOVISIVI     | 20                 | 28,9            |
| 16045 ARCHEOLOGIA FENICIO PUNICA                                | 9                  | 28,3            |
| 17270 SOCIOLOGIA DEI PROCESSI CULTURALI E COMUNICATIVI          | 3                  |                 |
| 18095 LETTERATURA INGLESE                                       | 7                  | 28,6            |
| 19144 FISICA APPLICATA AI BENI CULTURALI                        | 11                 | 27,3            |
| 19146 ARCHITETTURA NAVALE                                       | 23                 | 27,4            |
| 19735 LETTERATURA BIZANTINA                                     | 3                  |                 |
| 23212 STORIA DELLA CITTA' E DEL TERRITORIO                      | 5                  |                 |
| 23899 DIRITTO DEI BENI CULTURALI                                | 91                 | 26,7            |
| 25041 PALEONTOLOGIA E PALEOECOLOGIA I                           | 12                 | 30              |
| 31891 FILOLOGIA E STORIA RELIGIOSA DELL'IRAN                    | 5                  |                 |
| 31908 LINGUA E LETTERATURA GRECA II                             | 2                  |                 |
| 31923 CIVILTA' LETTERARIA GRECA                                 | 21                 | 28,3            |
| 31924 CIVILTA' LETTERARIA GRECA II                              | 6                  | 28,8            |
| 31926 DRAMMATURGIA DEL MONDO ROMANO                             | 1                  |                 |
| 31968 CHIMICA DELL'AMBIENTE E DEI BENI CULTURALI                | 38                 | 25,1            |
| 31969 PREISTORIA E PROTOSTORIA II                               | 1                  |                 |
| 31979 ARCHEOLOGIA E STORIA DELL'ARTE IRANICA II                 | 6                  | 28,2            |
| 31984 PREISTORIA E PROTOSTORIA I                                | 2                  |                 |
| 31989 ARCHEOLOGIA CLASSICA I                                    | 2                  |                 |
| 32160 STORIA DELLA NAVIGAZIONE                                  | 17                 | 28,4            |
| 32194 STORIA E TECNICA DELLA FOTOGRAFIA E DEGLI AUDIOVISIVI II  | 2                  |                 |
| 32240 STORIA DELLA MUSICA ANTICA, MEDIEVALE E RINASCIMENTALE II | 1                  |                 |
| 32445 BIBLIOGRAFIA E ESEGESI DELLA DOCUMENTAZIONE               | 4                  |                 |
| 32449 STORIA DEL LIBRO E BIBLIOTECONOMIA                        | 16                 | 28,5            |
| 32461 MUSEOGRAFIA E MUSEOTECNICA II                             | 30                 | 28,7            |
| 32532 DRAMMATURGIA DEL MONDO GRECO E ROMANO B                   | 7                  | 28,1            |
| 32543 CIVILTA' LATINA II  | 2                  |                 |
| 32548 FILOLOGIA E STORIA RELIGIOSA DELL'IRAN II                 | 2                  |                 |
| 32554 ARCHIVISTICA GENERALE E STORIA DEGLI ARCHIVI II           | 9                  | 30              |
| 32555 BIBLIOGRAFIA E ESEGESI DELLA DOCUMENTAZIONE II            | 1                  |                 |
| 32556 STORIA DEL LIBRO E BIBLIOTECONOMIA II                     | 4                  |                 |
| 32560 SOCIOLOGIA DEI PROCESSI CULTURALI E COMUNICATIVI II       | 3                  |                 |
| 32572 DRAMMATURGIA DEL MONDO GRECO E ROMANO II                  | 4                  |                 |
| 32620 CONSERVAZIONE E TRATTAMENTO DEI MATERIALI II              | 6                  | 27,8            |
| 32706 PALEONTOLOGIA UMANA I                                     | 6                  | 29,7            |
| 32707 ECOLOGIA E DINAMICHE DELLE POPOLAZIONI UMANE              | 10                 | 29,6            |
| 32754 PREISTORIA E PROTOSTORIA A                                | 11                 | 28,5            |

|   | N. of exams passed | Average grade * |
|---|--------------------|-----------------|
| 32757 CIVILTA' LETTERARIA GRECA I                                 | 4                  |                 |
| 32759 GEOARCHEOLOGIA I  | 1                  |                 |
| 32769 FILOLOGIA E STORIA RELIGIOSA DELL'IRAN A                    | 2                  |                 |
| 32790 DOCUMENTAZIONE ELETTRONICA                                  | 2                  |                 |
| 32792 GEOGRAFIA CULTURALE I                                       | 5                  |                 |
| 34759 ANTROPOLOGIA, ECOLOGIA E DINAMICHE DELLE POPOLAZIONI UMANE  | 9                  | 28,8            |
| 34767 PALEONTOLOGIA UMANA ED ECOLOGIA PREISTORICA                 | 3                  |                 |
| 37435 ARCHEOLOGIA DEL LIBRO ANTICO                                | 9                  | 28,7            |
| 37452 ARCHEOLOGIA DEL LIBRO ANTICO II                             | 5                  |                 |
| 39596 DOCUMENTAZIONE PER I BENI MUSICALI                          | 7                  | 29              |
| 39597 STORIA DELLE CHIESE IN ETA' MODERNA E CONTEMPORANEA         | 17                 | 29,3            |
| 41615 STORIA DEL TARDOANTICO CRISTIANO                            | 5                  |                 |
| 41887 CIVILTA' LATINA   | 19                 | 27,2            |
| 41894 STORIA DELLA MUSICA ANTICA, MEDIEVALE E RINASCIMENTALE      | 5                  |                 |
| 50234 ARCHEOLOGIA E STORIA DELL'ARTE DEL VICINO ORIENTE ANTICO    | 8                  | 27,5            |
| 50236 ARCHEOLOGIA E STORIA DELL'ARTE DEL VICINO ORIENTE ANTICO II | 9                  | 28,7            |
| 58283 MUSEOLOGIA E CRITICA ARTISTICA DEL RESTAURO                 | 9                  | 30              |
| 58500 ARCHEOLOGIA CRISTIANA E MEDIEVALE                           | 5                  |                 |
| 67044 INTRODUZIONE ALLA ETRUSCOLOGIA                              | 5                  |                 |

\* Note: no average grade is given if the number of exams passed is less than or equal to 5.

## D.3. OPINIONS OF GRADUATES AND ATTENDING STUDENTS

*Opinions of graduates on the Study Programme.*

*Tables and graphs provide information on the number of graduates who expressed positive opinions on the Study Programme, focusing on opinions expressed by attending students on course units.*

### D.3.1. OPINION OF GRADUATES

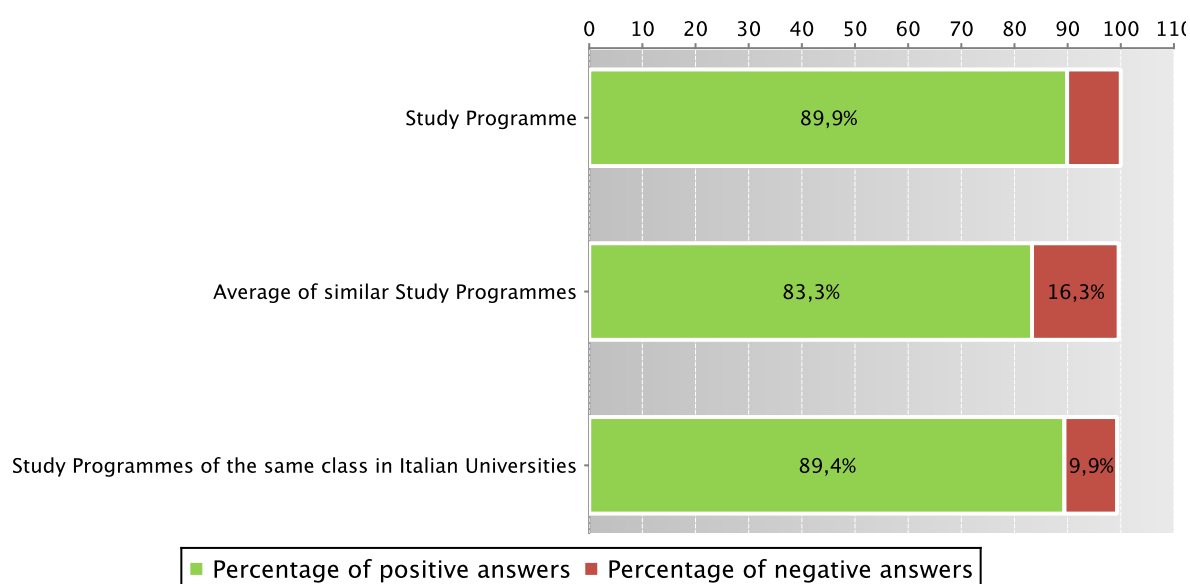
The **graph** shows the percentage of graduates (AlmaLaurea survey) who responded positively to the question: “**Are you generally satisfied with the Study Programme**”.

In addition, the **table** shows the percentage of students who answered “Yes, to the same programme at the university” to the question “Would you register again to the university?”.

The Study Programme data is compared with the average of similar Study Programmes (which belong to the same group), and the average of Study Programmes of the same class of other Italian universities for the graduates of the indicated years.

Graduates in 2012 who responded positively to the question: “Are you generally satisfied with this Study Programme?”

*Data of the Study Programme D.M. 270/04 Beni culturali (code 0886)*



*Data of the Study Programme D.M. 270/04 Beni culturali (code 0886)*

|      |  | N. graduates | Completed Questionnaires | % of positive answers to the question: “Are you generally satisfied with this Study Programme?” | % of answers “yes to the same Programme in the same University” to the question “Would you register again to the University” |
|------|--|--------------|--------------------------|---|--|
| 2011 | Study Programme  | 37           | 33                       | 93,9%   | 84,8%  |
|      | Average of similar Study Programmes                        | 70,9         | 65,6                     | 81,3%   | 63,8%  |
|      | Study Programmes of the same class in Italian Universities | 421          | 389                      | 87,4%   | 67,1%  |
| 2012 | Study Programme  | 75           | 69                       | 89,9%   | 68,1%  |
|      | Average of similar Study Programmes                        | 72,1         | 68,4                     | 83,3%   | 67,0%  |
|      | Study Programmes of the same class in Italian Universities | 1206         | 1127                     | 89,4%   | 67,9%  |

Symbols:

(\*) The opinions of the Study Programmes with less than 5 graduates are not shown.

Further information on [Graduates' Profile Report](#).

See data of previous academic years – Study Programme D.M. 509/99 Eastern European and Mediterranean Civilizations (code 0019), Historic-artistic and Musical Heritage (code 0401), Archaeological Heritage (code 0546) [paragraph D.5.3.1](#).

### D.3.2 ADDITIONAL DATA ON OPINIONS OF STUDENTS

#### D.3.2.1. OPINION OF ATTENDING STUDENTS

The **graph** shows the percentage of attending students who responded positively to the question in the questionnaire: “Are you generally satisfied with this course unit?” in academic year 2011/2012.

The **table** also shows the number of completed questionnaires.

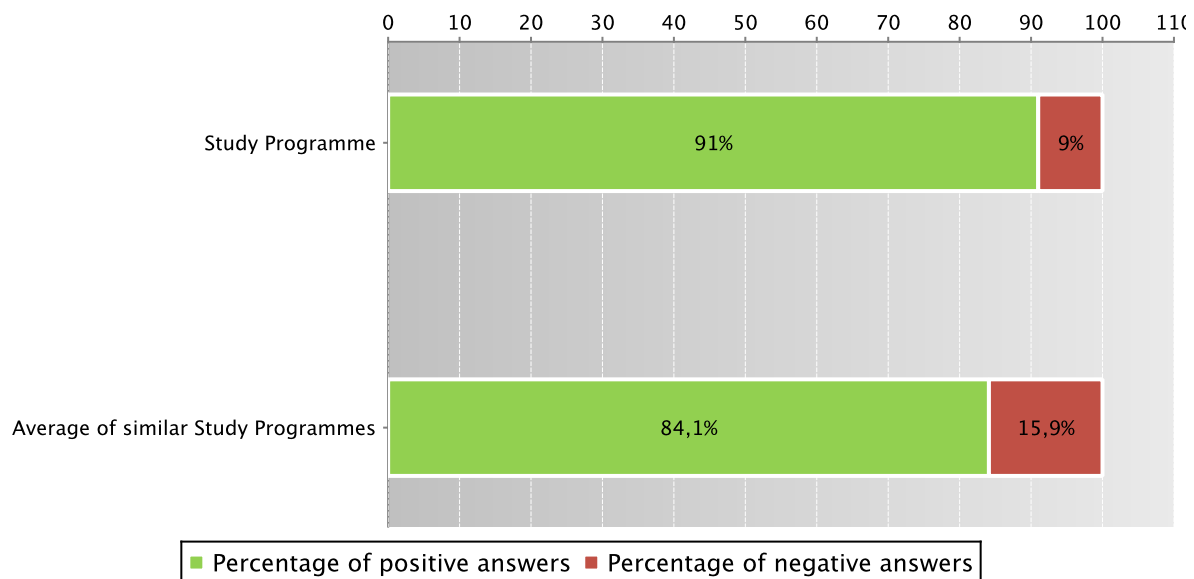
The Study Programme data is compared with the [average of similar Study Programmes \(which belong to the same group\)](#), for the indicated academic years.

The data concerning the students' opinion refers to the opinions of those attending lessons, whether they are enrolled in the current programme or a Study Programme running under pre-reform regulations (under D.M. 509).

For the University of Bologna the survey and subsequently analysis of the opinions of students attending the course is cared by Academic Affairs Division - Quality Assurance Department and Control and Finance Division - Support Planning and Evaluation Department. The overall results and the methods of collection and analysis are described in the document published online on the [Statistical Observatory of the University of Bologna](#) (see the note in the glossary).

Students who responded positively to the question: “Are you generally satisfied with this course unit?” in academic year 2011/2012

*Data of the Study Programme D.M. 270/04 Beni culturali (code 0886) and of the Study Programmes D.M. 509/99 Civiltà dell'Europa orientale e del Mediterraneo (code 0019), Beni storico-artistici e musicali (code 0401), Beni archeologici (code 0546)*



Data of the Study Programme D.M. 270/04 Beni culturali (code 0886) and of the Study Programmes D.M. 509/99 Civiltà dell'Europa orientale e del Mediterraneo (code 0019), Beni storico-artistici e musicali (code 0401), Beni archeologici (code 0546)

|                |                                     | Number of completed questionnaires | % of positive answers concerning the general satisfaction with the course unit – Question 19 |
|----------------|-------------------------------------|------------------------------------|--|
| a.y. 2009/2010 | Study Programme                     | 903                                | 90,6%  |
|                | Average of similar Study Programmes | 1529,9                             | 83,6%  |
| a.y. 2010/2011 | Study Programme                     | 796                                | 93,7%  |
|                | Average of similar Study Programmes | 1445,9                             | 83,8%  |
| a.y. 2011/2012 | Study Programme                     | 896                                | 91,0%  |
|                | Average of similar Study Programmes | 1839,3                             | 84,1%  |

Symbols:

(\*) When there is a small number of questionnaires, the percentage of positive opinions on overall satisfaction is not presented.

Further information on [Rapporto Opinione degli studenti frequentanti sulle attività didattiche](#) (the content is in Italian).

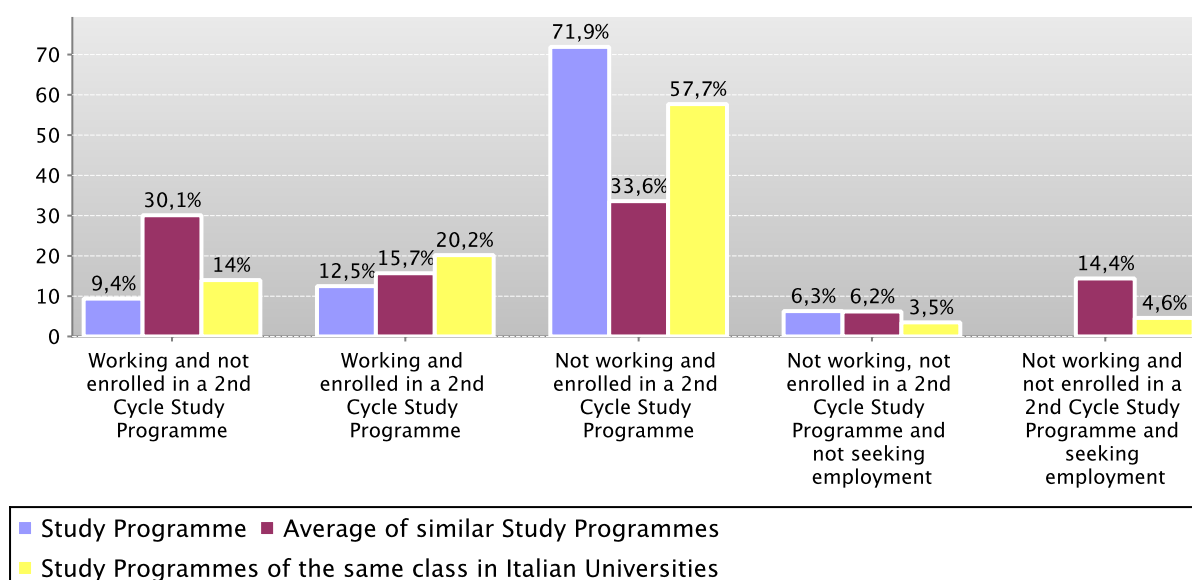
## D.4. ENTRY INTO THE WORLD OF WORK

*Employment situation of graduates of the Study Programme.*

*Tables and graphs provide information on the employment situation of graduates one year after graduating.*

### D.4.1. EMPLOYMENT SITUATION

Employment situation of graduates in 2011 one year after graduating



|                      |  | N. graduates interviewed | Employment and education situation (1)                  |   |   |   |  | Not working, not seeking employment, but following a university programme/traineeship (2) | Degree's appropriateness for the job (referred to the graduates who just work) (3) |                 |
|----------------------|--|--------------------------|---|---|---|---|--|---|--|-----------------|
|                      |  |                          | Working and not enrolled in a 2nd Cycle Study Programme | Working and enrolled in a 2nd Cycle Study Programme | Not working and enrolled in a 2nd Cycle Study Programme | Not working, not enrolled in a 2nd Cycle Study Programme and not seeking employment | Not working and not enrolled in a 2nd Cycle Study Programme and seeking employment |   | Effective / very effective   | Quite effective |
| Graduation Year 2011 | Study Programme  | 32                       | 9,4%  | 12,5%   | 71,9%   | 6,3%  |  | 65,6%   | 28,6%  | 14,3%           |
|                      | Average of similar Study Programmes                        | 61,3                     | 30,1%   | 15,7%   | 33,6%   | 6,2%  | 14,4%  | 26,9%   | 30,2%  | 27,8%           |
|                      | Study Programmes of the same class in Italian Universities | 371                      | 14,0%   | 20,2%   | 57,7%   | 3,5%  | 4,6%   | 42,6%   | 13,0%  | 16,3%           |

See data of previous academic years – Study Programme D.M. 509/99 Eastern European and Mediterranean Civilizations (code 0019), Historic-artistic and Musical Heritage (code 0401), Archaeological Heritage (code 0546) paragraph D.5.4.1.

## D.5. INFORMATION ON PRE-REFORM PROGRAMMES (DM 509/99)

### D.5.1. STUDENTS STARTING THEIR UNIVERSITY CAREERS

*Characteristics of incoming students at the beginning of their university careers. Tables and graphs provide information on the number of registered students, focusing on the characteristics of the students, results of any entrance tests and students assigned additional learning requirements.*

#### D.5.1.1. ENROLMENTS AND REGISTRATIONS

Data of enrolments and registrations of the last three academic years are shown in paragraph D.1.1.

#### D.5.1.2. ADDITIONAL DATA ON STUDENTS' STARTING THEIR UNIVERSITY CAREERS

##### D.5.1.2.1. CANDIDATES REGISTERED FOR THE ENTRANCE EXAM

Data of candidates registered for the entrance exam are shown in paragraph D.1.2.1.

##### D.5.1.2.2. INCOMING STUDENTS

Data of incoming students of the last three academic years are shown in paragraph D.1.2.2.

### D.5.2. REGULARITY OF STUDIES

*Insight into the regularity with which the students pass their exams.*

*Graphs and tables provide information on the number of students who leave the programme after the first year and the number of regular graduates, focusing on the number of credits obtained at the end of the first year, the number of exams passed and the average grade achieved for each course unit.*

#### D.5.2.1. STUDENTS LEAVING THE PROGRAMME BETWEEN YEARS 1 AND 2

Data of students leaving the Study Programme of the last three academic years are shown in paragraph D.2.1.



### D.5.2.2. REGULAR GRADUATES

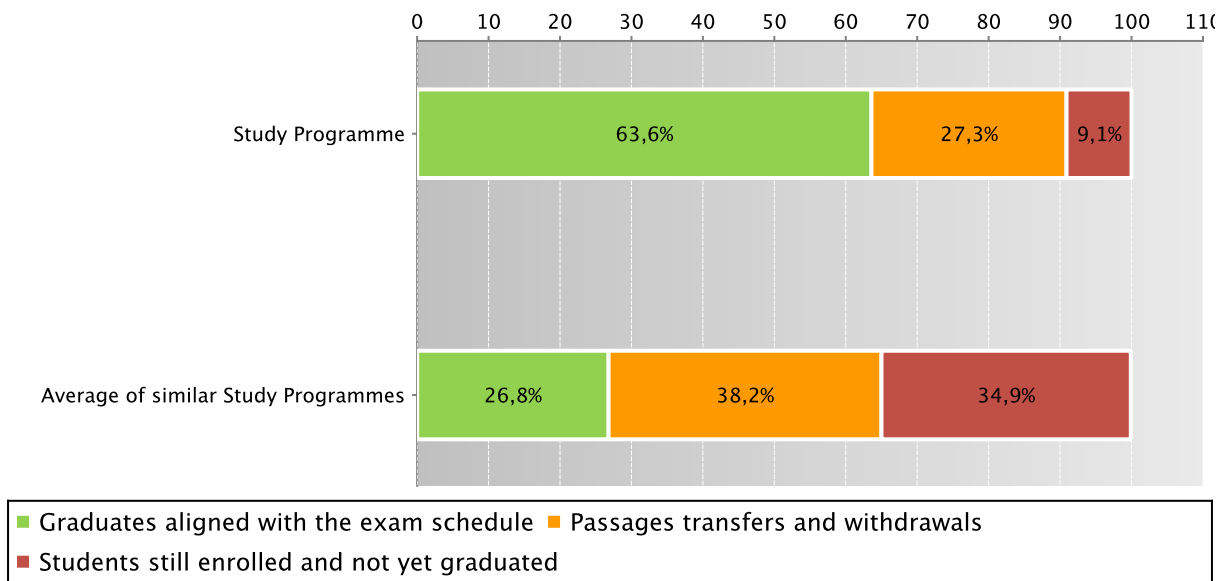
Here you will find information on regular graduates, on how many students, at the end of the regular programme duration, left the programme and how many are still enrolled but not aligned to the exam schedule.

The **graph** and the **table** show the situation concerning **registered students** for the indicated academic year, at the end of the regular duration of the Study Programme, highlighting the percentage of regular graduates, the number of students still enrolled (**not aligned to the exam schedule** and **repeating** students), students who have left the programme (including **passages**, **transfers** and **withdrawals**).

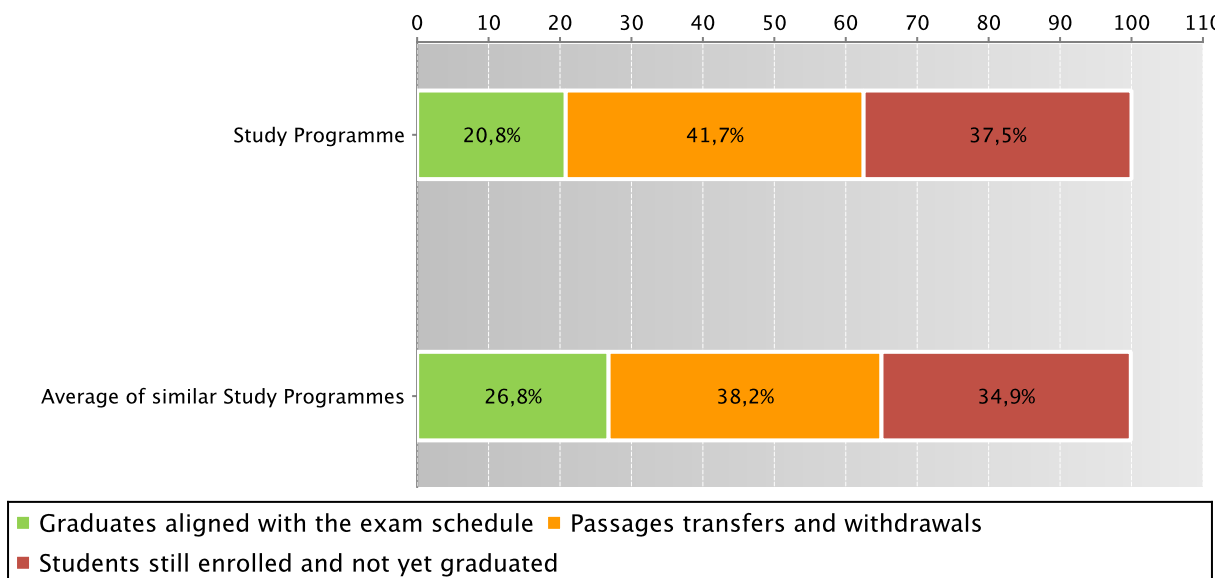
The Study Programme data is compared with the average of **similar Study Programmes** (which belong to the same group) for students registered in the indicated academic years.

Situation of students 2007/2008 at the end of regular duration of the study programme

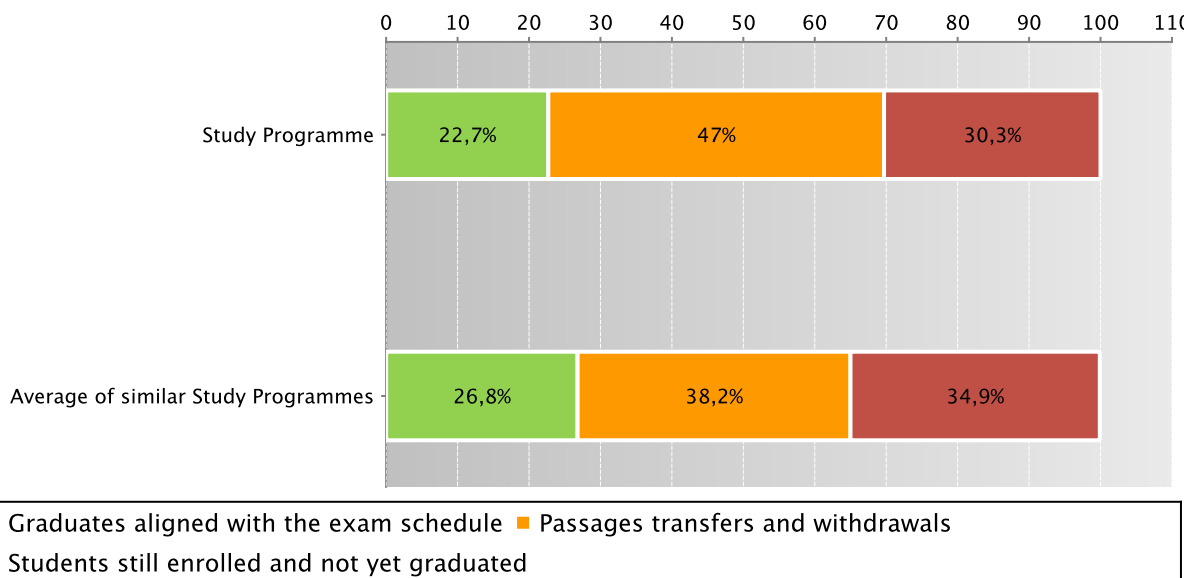
*Data of the Study Programme D.M. 509/99 Eastern European and Mediterranean Civilizations (code 0019)*



*Data of the Study Programme D.M. 509/99 Historic-artistic and Musical Heritage (code 0401)*



Data of the Study Programme D.M. 509/99 Archaeological Heritage (code 0546)



Data of the Study Programme D.M. 509/99 Eastern European and Mediterranean Civilizations (code 0019)

|                    | Registered students                 | Regular graduates |    | Passages transfers and withdrawals |    | Students still enrolled and not yet graduated |      |       |
|--------------------|-------------------------------------|-------------------|----|------------------------------------|----|---|------|-------|
|                    |                                     | N.                | %  | N.                                 | %  | N.  | %    |       |
| Students 2007/2008 | Study Programme                     | 11                | 7  | 63,6%                              | 3  | 27,3%   | 1    | 9,1%  |
|                    | Average of similar Study Programmes | 175               | 47 | 26,8%                              | 67 | 38,2%   | 61,1 | 34,9% |

Data of the Study Programme D.M. 509/99 Historic-artistic and Musical Heritage (code 0401)

|                    | Registered students                 | Regular graduates |    | Passages transfers and withdrawals |    | Students still enrolled and not yet graduated |      |       |
|--------------------|-------------------------------------|-------------------|----|------------------------------------|----|---|------|-------|
|                    |                                     | N.                | %  | N.                                 | %  | N.  | %    |       |
| Students 2007/2008 | Study Programme                     | 24                | 5  | 20,8%                              | 10 | 41,7%   | 9    | 37,5% |
|                    | Average of similar Study Programmes | 175               | 47 | 26,8%                              | 67 | 38,2%   | 61,1 | 34,9% |

Data of the Study Programme D.M. 509/99 Archaeological Heritage (code 0546)

|  |                                     | Registered students | Regular graduates  |                 | Passages transfers and withdrawals |       | Students still enrolled and not yet graduated |       |
|--|-------------------------------------|---------------------|--------------------|-----------------|------------------------------------|-------|---|-------|
|  |                                     |                     | N.                 | %               | N.                                 | %     | N.  | %     |
|  |                                     |                     | Students 2007/2008 | Study Programme | 66                                 | 15    | 22,7%   | 31    |
|  | Average of similar Study Programmes | 175                 | 47                 | 26,8%           | 67                                 | 38,2% | 61,1  | 34,9% |

[Go back to D.2.2. Regular graduates](#)

### D.5.2.3. ADDITIONAL DATA ON REGULARITY OF STUDIES

#### D.5.2.3.1. CREDITS OBTAINED BY STUDENTS IN THE 1ST YEAR

Data of credits obtained by students in the 1st year of the last three academic years are shown in paragraph [D.2.3.1.](#)

#### D.5.2.3.2. EXAMS PASSED AND AVERAGE GRADE

Data of exams passed and average grade are shown in paragraph [D.2.3.2.](#)

### D.5.3. OPINIONS OF ATTENDING STUDENTS AND GRADUATES

*Opinions of graduates on the Study Programme.*

*Tables and graphs provide information on the number of graduates who expressed positive opinions on the Study Programme, focusing on opinions expressed by attending students on course units.*

#### D.5.3.1. OPINION OF GRADUATES

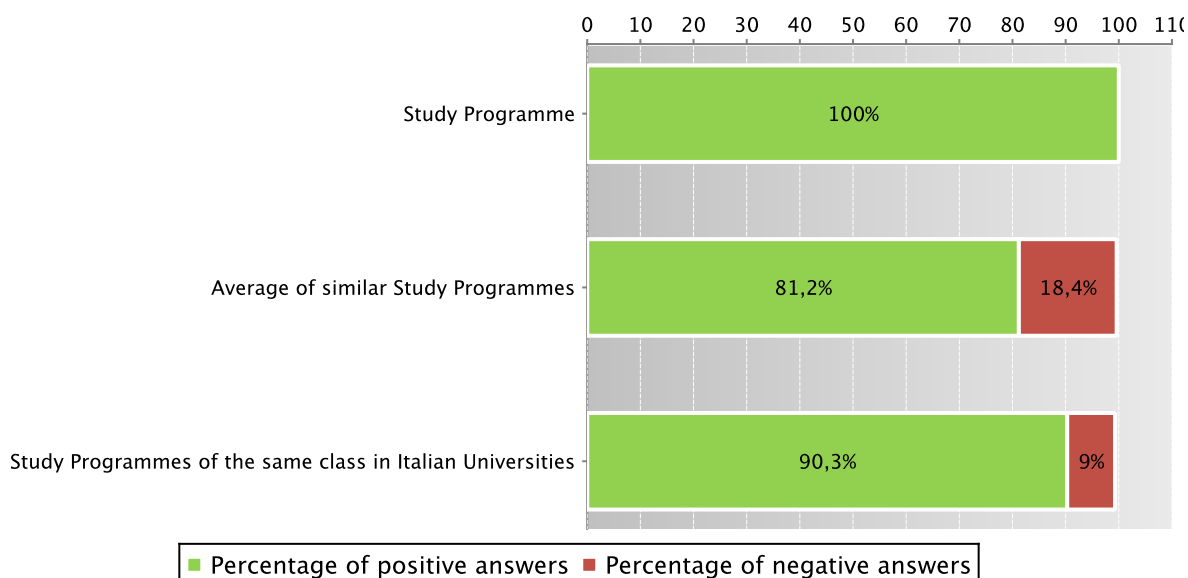
The **graph** shows the percentage of graduates (AlmaLaurea survey) who responded positively to the question: “**Are you generally satisfied with the Study Programme**”.

In addition, the **table** shows the percentage of students who answered “Yes, to the same programme at the university” to the question “Would you register again to the university?”.

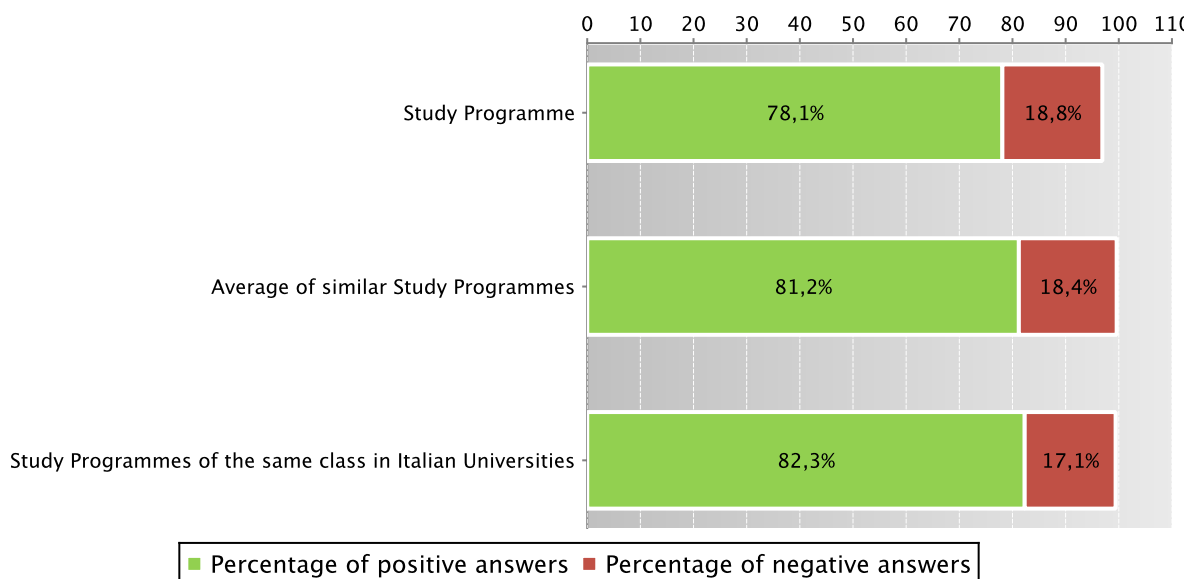
The Study Programme data is compared with the average of similar Study Programmes (which belong to the same group), for the indicated years.

Graduates in 2010 who responded positively to the question: “Are you generally satisfied with this Study Programme?”

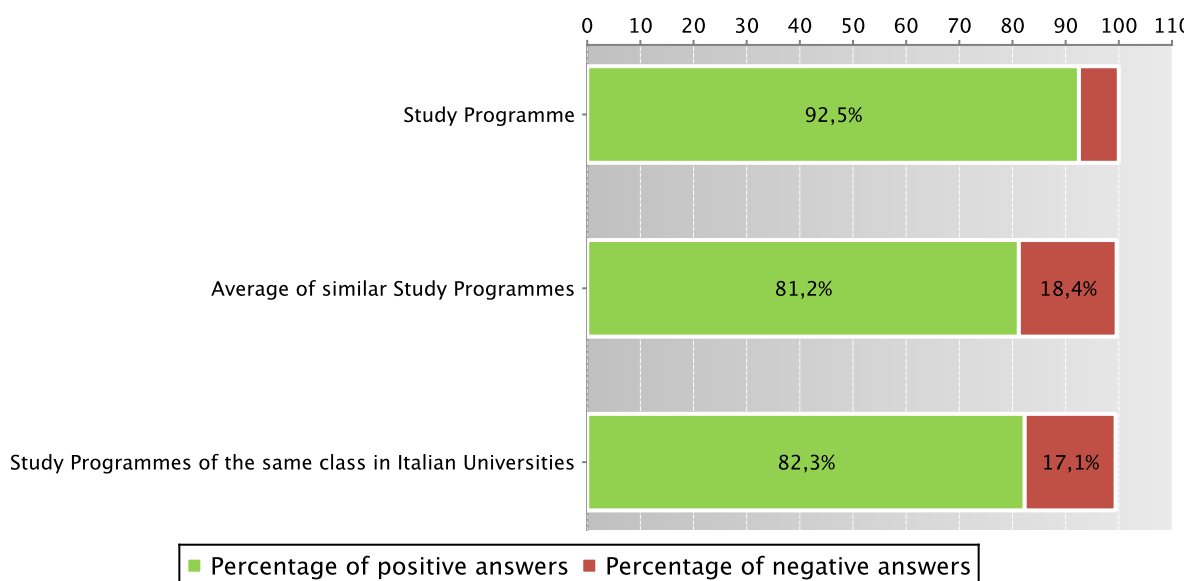
*Data of the Study Programme D.M. 509/99 Civiltà dell'Europa orientale e del Mediterraneo (code 0019)*



*Data of the Study Programme D.M. 509/99 Beni storico-artistici e musicali (code 0401)*



Data of the Study Programme D.M. 509/99 Beni archeologici (code 0546)



Data of the Study Programme D.M. 509/99 Civiltà dell'Europa orientale e del Mediterraneo (code 0019)

|      |  | N. graduates | Completed Questionnaires | % of positive answers to the question: "Are you generally satisfied with this Study Programme?" | % of answers "yes to the same Programme in the same University" to the question "Would you register again to the University" |
|------|--|--------------|--------------------------|---|--|
| 2010 | Study Programme  | 17           | 13                       | 100,0%  | 69,2%  |
|      | Average of similar Study Programmes                        | 114,7        | 103                      | 81,2%   | 63,5%  |
|      | Study Programmes of the same class in Italian Universities | 4318         | 3806                     | 90,3%   | 68,3%  |

Data of the Study Programme D.M. 509/99 Beni storico-artistici e musicali (code 0401)

|      |  | N. graduates | Completed Questionnaires | % of positive answers to the question: "Are you generally satisfied with this Study Programme?" | % of answers "yes to the same Programme in the same University" to the question "Would you register again to the University" |
|------|--|--------------|--------------------------|---|--|
| 2010 | Study Programme  | 37           | 32                       | 78,1%   | 62,5%  |
|      | Average of similar Study Programmes                        | 114,7        | 103                      | 81,2%   | 63,5%  |
|      | Study Programmes of the same class in Italian Universities | 2748         | 2497                     | 82,3%   | 57,1%  |

Data of the Study Programme D.M. 509/99 Beni archeologici (code 0546)

|      |  | N. graduates | Completed Questionnaires | % of positive answers to the question: "Are you generally satisfied with this Study Programme?" | % of answers "yes to the same Programme in the same University" to the question "Would you register again to the University" |
|------|--|--------------|--------------------------|---|--|
| 2010 | Study Programme  | 69           | 53                       | 92,5%   | 69,8%  |
|      | Average of similar Study Programmes                        | 114,7        | 103                      | 81,2%   | 63,5%  |
|      | Study Programmes of the same class in Italian Universities | 2748         | 2497                     | 82,3%   | 57,1%  |

Symbols:

(\*) The opinions of the Study Programmes with less than 5 graduates are not shown.

Further information on [Graduates' Profile Report](#).

Go back to [D.3.1. Opinion of graduates](#)

### D.5.3.2 ADDITIONAL DATA ON OPINIONS OF STUDENTS

#### D.5.3.2.1. OPINION OF ATTENDING STUDENTS

Data of opinion of attending students of the last three academic years are shown in paragraph [D.3.2.1](#).

### D.5.4. ENTRY INTO THE WORLD OF WORK

Employment situation of graduates of the Study Programme.

Tables and graphs provide information on the employment situation of graduates one year after graduating.

#### D.5.4.1. EMPLOYMENT SITUATION

The paragraph shows the employment situation of graduates one year after graduating.

The data is taken from the AlmaLaurea reports on the employment situation of graduates.

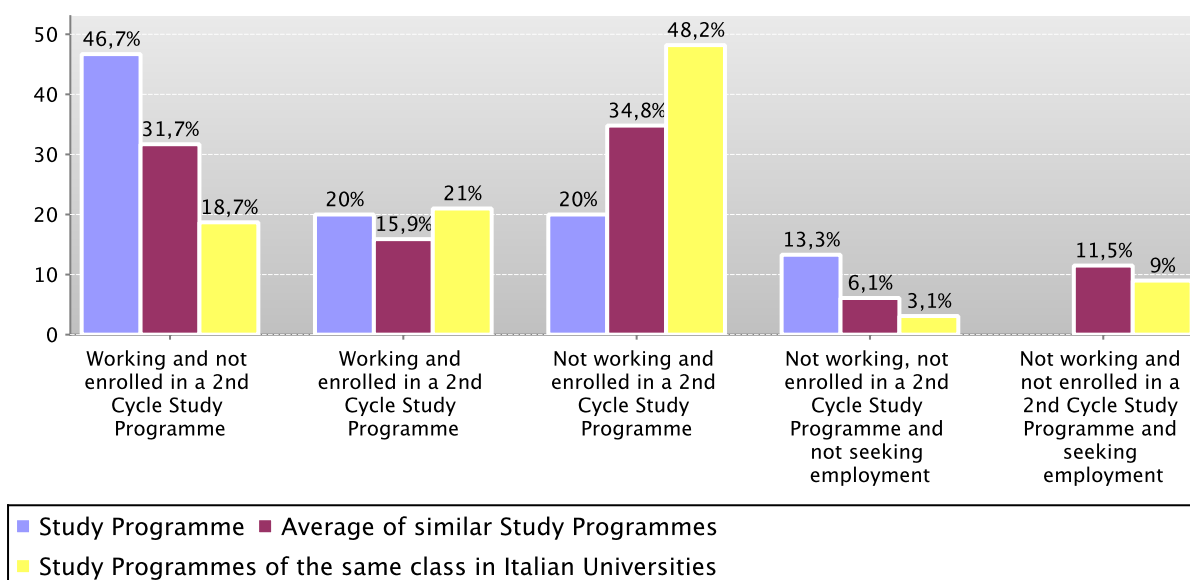
The **graph** shows who is working, who is not working but has enrolled in a Second Cycle study programme, who is not working and is not seeking employment, who is not working but is seeking employment.

In addition, the **table** shows the number of graduates interviewed, the number involved in internships and traineeships and the appropriateness of their degree to the job.

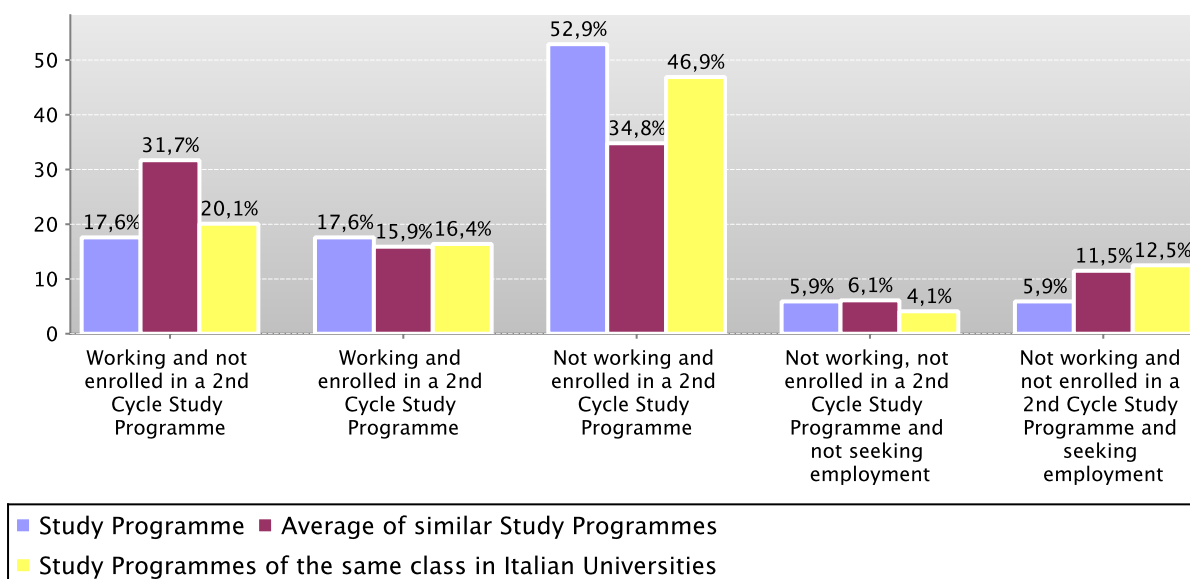
The Study Programme data is compared with the average of similar Study Programmes (which belong to the same group) and the average of Study Programmes of the same faculty of other Italian universities for the graduates of the indicated years.

Employment situation of graduates in 2010 one year after graduating

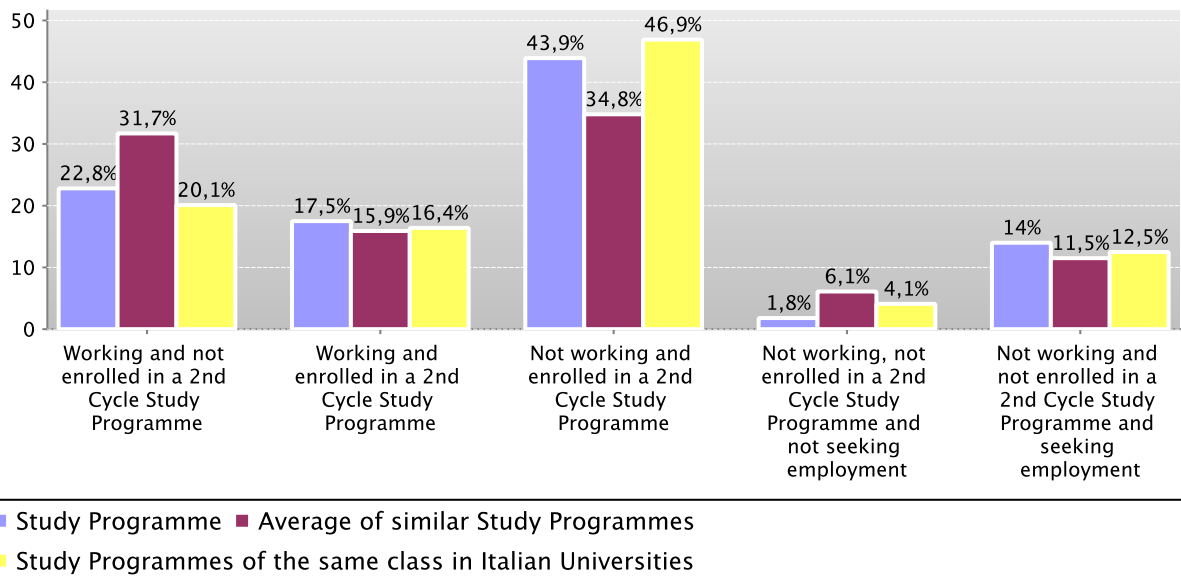
Data of the Study Programme D.M. 509/99 Eastern European and Mediterranean Civilizations (code 0019)



Data of the Study Programme D.M. 509/99 Historic-artistic and Musical Heritage (code 0401)



Data of the Study Programme D.M. 509/99 Archaeological Heritage (code 0546)



Data of the Study Programme D.M. 509/99 Eastern European and Mediterranean Civilizations (code 0019)

|                      |  | N. graduates interviewed | Employment and education situation (1)                  |   |   |   |  | Not working, not seeking employment, but following a university programme/traineeship (2) | Degree's appropriateness for the job (referred to the graduates who just work) (3) |                 |
|----------------------|--|--------------------------|---|---|---|---|--|---|--|-----------------|
|                      |  |                          | Working and not enrolled in a 2nd Cycle Study Programme | Working and enrolled in a 2nd Cycle Study Programme | Not working and enrolled in a 2nd Cycle Study Programme | Not working, not enrolled in a 2nd Cycle Study Programme and not seeking employment | Not working and not enrolled in a 2nd Cycle Study Programme and seeking employment |   | Effective / very effective   | Quite effective |
| Graduation Year 2009 | Study Programme  | 27                       | 85,2%   | 3,7%  | 11,1%   |   | 3,7%   | 12,5%   | 54,2%  |                 |
|                      | Average of similar Study Programmes                        | 117,8                    | 30,0%   | 17,9%   | 35,5%   | 5,8%  | 10,8%  | 28,8%   | 33,7%  | 28,1%           |
|                      | Study Programmes of the same class in Italian Universities | 3231                     | 17,4%   | 18,8%   | 52,2%   | 3,5%  | 8,1%   | 35,9%   | 11,8%  | 31,4%           |
| Graduation Year 2010 | Study Programme  | 15                       | 46,7%   | 20,0%   | 20,0%   | 13,3%   |  | 6,7%  |  | 20,0%           |
|                      | Average of similar Study Programmes                        | 97                       | 31,7%   | 15,9%   | 34,8%   | 6,1%  | 11,5%  | 26,7%   | 32,4%  | 25,8%           |
|                      | Study Programmes of the same class in Italian Universities | 3065                     | 18,7%   | 21,0%   | 48,2%   | 3,1%  | 9,0%   | 31,1%   | 16,6%  | 31,9%           |



Data of the Study Programme D.M. 509/99 Historic-artistic and Musical Heritage (code 0401)

|                      |  | N. graduates interviewed | Employment and education situation (1)                  |   |   |   |  | Not working, not seeking employment, but following a university programme/traineeship (2) | Degree's appropriateness for the job (referred to the graduates who just work) (3) |                 |
|----------------------|--|--------------------------|---|---|---|---|--|---|--|-----------------|
|                      |  |                          | Working and not enrolled in a 2nd Cycle Study Programme | Working and enrolled in a 2nd Cycle Study Programme | Not working and enrolled in a 2nd Cycle Study Programme | Not working, not enrolled in a 2nd Cycle Study Programme and not seeking employment | Not working and not enrolled in a 2nd Cycle Study Programme and seeking employment |   | Effective / very effective   | Quite effective |
| Graduation Year 2009 | Study Programme  | 22                       | 13,6%   | 13,6%   | 54,5%   | 13,6%   | 4,5%   | 31,8%   | 16,7%  | 16,7%           |
|                      | Average of similar Study Programmes                        | 117,8                    | 30,0%   | 17,9%   | 35,5%   | 5,8%  | 10,8%  | 28,8%   | 33,7%  | 28,1%           |
|                      | Study Programmes of the same class in Italian Universities | 2834                     | 18,6%   | 20,4%   | 45,9%   | 4,0%  | 11,2%  | 26,5%   | 15,3%  | 21,6%           |
| Graduation Year 2010 | Study Programme  | 34                       | 17,6%   | 17,6%   | 52,9%   | 5,9%  | 5,9%   | 26,5%   | 8,3%   | 16,7%           |
|                      | Average of similar Study Programmes                        | 97                       | 31,7%   | 15,9%   | 34,8%   | 6,1%  | 11,5%  | 26,7%   | 32,4%  | 25,8%           |
|                      | Study Programmes of the same class in Italian Universities | 2470                     | 20,1%   | 16,4%   | 46,9%   | 4,1%  | 12,5%  | 27,2%   | 13,7%  | 22,4%           |

Data of the Study Programme D.M. 509/99 Archaeological Heritage (code 0546)

|                      |  | N. graduates interviewed | Employment and education situation (1)                  |   |   |   |  | Not working, not seeking employment, but following a university programme/traineeship (2) | Degree's appropriateness for the job (referred to the graduates who just work) (3) |                 |
|----------------------|--|--------------------------|---|---|---|---|--|---|--|-----------------|
|                      |  |                          | Working and not enrolled in a 2nd Cycle Study Programme | Working and enrolled in a 2nd Cycle Study Programme | Not working and enrolled in a 2nd Cycle Study Programme | Not working, not enrolled in a 2nd Cycle Study Programme and not seeking employment | Not working and not enrolled in a 2nd Cycle Study Programme and seeking employment |   | Effective / very effective   | Quite effective |
| Graduation Year 2009 | Study Programme  | 90                       | 21,1%   | 15,6%   | 46,7%   | 4,4%  | 12,2%  | 24,4%   | 20,7%  | 34,5%           |
|                      | Average of similar Study Programmes                        | 117,8                    | 30,0%   | 17,9%   | 35,5%   | 5,8%  | 10,8%  | 28,8%   | 33,7%  | 28,1%           |
|                      | Study Programmes of the same class in Italian Universities | 2834                     | 18,6%   | 20,4%   | 45,9%   | 4,0%  | 11,2%  | 26,5%   | 15,3%  | 21,6%           |
| Graduation Year 2010 | Study Programme  | 57                       | 22,8%   | 17,5%   | 43,9%   | 1,8%  | 14,0%  | 28,1%   | 9,1%   | 9,1%            |
|                      | Average of similar Study Programmes                        | 97                       | 31,7%   | 15,9%   | 34,8%   | 6,1%  | 11,5%  | 26,7%   | 32,4%  | 25,8%           |
|                      | Study Programmes of the same class in Italian Universities | 2470                     | 20,1%   | 16,4%   | 46,9%   | 4,1%  | 12,5%  | 27,2%   | 13,7%  | 22,4%           |

Symbols:

(\*) The opinions of the Study Programmes with less than 5 graduates are not shown.

**Notes on the AlmaLaurea report on the employment situation of graduates**

**(1)** "Employment and education situation": the number of employed graduates is the sum of those working and those working who are also enrolled in a 2nd cycle degree programme. The number of those enrolled in a 2nd cycle degree programme is the sum of those who are working and studying and those who are only studying.

**(2)** "Number of those who do not work, who are not seeking employment but who are following a university programme/traineeship": the definition includes those who are enrolled in traineeships, PhD degrees, specialisation schools, Italian "master universitari" (first and second level). The presentation of this data complies with article 2 of D.M. 544 of 31st October 2007, as later provided for in Management Decree no. 61 of 10th June 2008 (transparency requirements).

**(3)** The evaluation of the appropriateness of the degree is obtained by a combination of the requirement of the relative qualification for the job held and the level of usage of the skills learned at university.

Further information on [Graduates' Employment report](#).

[Go back to D.4.1. Employment situation](#)

## E. FIND OUT MORE: THE QUALITY OF YOUR STUDY PROGRAMME

The University of Bologna has identified its objectives as the *personal, cultural and professional growth of students and the improvement of the quality of learning, also in relation to the needs of society* (Strategic Plan 2010-2013).

Students, employers and society as a whole, have the right to effective learning for individual and intellectual growth, to develop critical sense and to prepare for the world of work.

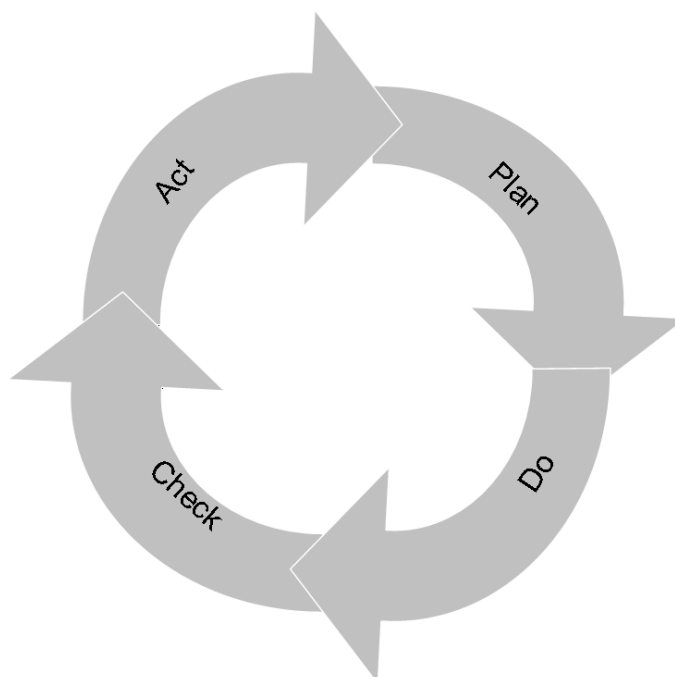
In the Statute and the Strategic Plan 2010-2013 the University of Bologna acknowledges its responsibility in guaranteeing the quality of its study programmes, and for this purpose adopts an "internal quality assurance system".

### The Internal Quality Assurance system

The internal quality assurance system is a set of processes and responsibilities adopted to guarantee the quality of Study Programmes at the University of Bologna.

The guarantee of the quality of a Study Programme is the correspondence of the results achieved with the set objectives, in the following phases:

- Plan: defining the objectives
- Do: implementing the planned actions
- Check: checking that the objectives have been achieved
- Act: planning improvement action



This path responds to the expectations of students, guides teaching behaviour and provides indicators for the assessment of results. Self-assessment is based on the analysis of significant data (for example, the number of students graduating in line with the exam schedule, students' opinions and the employment rates of graduates) and highlights strengths and weaknesses in order to reflect on the achieved results, critically consider one's own working methods and take steps for the continual improvement of the Programme. This path involves all educational stakeholders, including students, in order to make use of the contributions of everyone with first-hand knowledge of the Study Programme. Improvement is therefore a day to day development, concerning all aspects of teaching: from the lesson timetable to the publication of on-line programmes, from classroom management to exam methods, and the actual design of the Programme.

This is what happens in each phase:

- **Planning:** the Study Programme is the result of a proposal from the teaching structures and approved by the Academic Bodies.
- **Management:** Schools, Departments and Study Programmes manage the activities required to ensure teaching. The activities are organised as follows:

| What we do  | Who does what |                 |         |             |                                  |
|---|---------------|-----------------|---------|-------------|----------------------------------|
|   | Professors    | Study Programme | Schools | Departments | General Administration           |
| Teaching calendar, lessons programme and exam schedules |               |                 | x       |             |                                  |
| Management of financial resources                       |               |                 | x       | x           |                                  |
| Classroom teaching                                      | x             |                 |         |             |                                  |
| Management of classrooms and laboratories               |               |                 | x       | x           |                                  |
| Libraries and study rooms                               |               |                 | x       | x           |                                  |
| Approval of individual study plans                      |               | x               |         |             |                                  |
| Communication and information                           |               | x               | x       |             | Academic Affairs Division        |
| Guidance service  |               | x               | x       |             | Academic Affairs Division        |
| Internships   |               | x               | x       |             | Academic Affairs Division        |
| Administrative services: Student Administration Office  |               |                 |         |             | Academic Affairs Division        |
| Administration services: Degree programme office        |               |                 | x       |             | Academic Affairs Division        |
| Study grants and loans ad honorem                       |               |                 |         |             | Academic Affairs Division        |
| Student mobility: university subsidies and programmes   |               |                 |         |             | International Relations Division |
| Mobility: study grants for dissertations abroad         |               |                 | x       |             |                                  |
| Mobility: authorisations and recognitions               |               | x               |         |             |                                  |
| Other students support services                         |               | x               | x       |             | x                                |

- Internal assessment:** every Study Programme periodically assesses its own results, evaluating, for example, the number of enrolled students, the number of withdrawing students, student opinions etc.; in this way, the strengths and weaknesses, as well as any implemented improvement actions, are highlighted. This phase is organised as follows:

| What we do  | Who does what   |
|---|---|
| <p><b>Definition, gathering and publication of evaluation data</b><br/>According to the general guidelines of the University and national and international standards, are defined the tools through which should be evaluated the results (indicators). The survey data to be evaluate are published every year on the Report of the Study Program.</p>  | Academic Bodies   |
| <p><b>Self-Assessment</b><br/>The Schools and Study Programmes assess the effectiveness of the previously adopted solutions, analyse the progress of their learning activities and draw up proposals for improvement.</p>   | Schools and Study Programmes  |
| <p><b>Internal audit</b></p> <p>The results of the self-assessment process are reviewed in the following phases:</p> <ul style="list-style-type: none"> <li>• <b>Analysis:</b> the University Quality Manager analyses the review documents, considering the ability to identify problems, propose solutions and the overall development of the internal quality assurance system.</li> <li>• <b>Review:</b> The observations on the results obtained and the good practices adopted are examined together with the persons in charge of the Schools and Study Programmes in meetings organised by scientific-disciplinary field. The persons in charge receive the observations and inputs on the areas for development and the actions to be adopted in future to improve results.</li> <li>• <b>Sharing:</b> the conclusions of the review activities are submitted to the Academic Bodies and the University Evaluation Board.</li> </ul> | <p>Quality Manager</p> <p>Vice Rector for Teaching and Education</p> <p>Academic Bodies</p> |
| <ul style="list-style-type: none"> <li>• <b>Improvement:</b> on the basis of the results of the internal audit, the Schools and Study Programmes plan improvement activities, to ensure that the Study Programmes increasingly respond to the needs of society. The cycle then starts over again, with the definition of actions to be implemented, the results of which are in turn verified, in a continuous path that guarantees the quality of education.</li> </ul>  |   |

## F. GLOSSARY TERMS

### Additional Learning Requirements

Students enrolling in the first year of a first cycle or single cycle degree and who, following the results of the entrance exams established for each study programme, do not possess the knowledge required for access to the programme, are assigned additional learning requirements (OFA).

The OFA are fulfilled by passing an assessment test defined by the programme.

The non-fulfilment of the requirements by the date set by the Academic Bodies and published on the University Portal will lead to the re-enrolment in the first year of the programme.

### AlmaLaurea

AlmaLaurea is an innovative in-line database service of graduates' curriculum vitae (1,620,000 CVs, from 53 Italian universities as of 05/07/2012), which offers a link between graduates, universities and businesses.

Created in 1994 on the initiative of the Statistical Observatory of the University of Bologna, managed by a consortium of Italian universities with the support of the Ministry of Education, University and Research, the purpose AlmaLaurea is to act as a point of contact between businesses and graduates, a reference within universities for anyone (students, businesses, etc...) working in the field of university studies, employment and the condition of young people at different levels.

### Average of similar study programmes (belonging to the same group)

Average of the Study Programmes (which belong to the subject group)

Calculated average which refers to all study programmes of the same cycle which belong to the subject group.

There are four groups, composed as follows:

- **BIOMEDICAL group:** Study Programmes of the Schools of Pharmacy, Biotechnology and Sport Science; Medicine; Agriculture and Veterinary Medicine
- **SCIENTIFIC-TECHNOLOGICAL group:** Study Programmes of the Schools of Engineering and Architecture; Sciences
- **SOCIAL SCIENCES group:** Study Programmes of the Schools of Economics, Management, and Statistics; Law, Political Sciences
- **HUMANITIES group:** Study Programmes of the Schools of Arts, Humanities, and Cultural Heritage; Foreign Languages and Literatures, Interpreting and Translation; Psychology and Education

### CFU University Learning Credits

University Learning Credits (CFU) were introduced under Italian Ministerial Decree no. 509/99 to comply with European legislation, and are a measurement of the volume of learning, including individual study, required of students; generally 1 CFU corresponds to 25 hours of a student's "overall learning effort".

### Class

Degree classes group together study programmes of the same level and with the same key learning outcomes and available learning activities for a given number of credits and in sectors which are identified as indispensable. The features of the classes are set nationally, by Ministerial Decree, and are therefore common to all universities.

### Cohort

Cohort refers to a group of students enrolled in the same academic year.

### Enrolment status

In terms of enrolment, students may be:

- **Regularly enrolled:** students enrolled for as many or fewer years than the legal duration of the study programme, who do not fall into any of the following categories;
- **Not aligned with the exam schedule:** students who, without having graduated, have enrolled in all the years of the study programme and which, for programmes with compulsory attendance, have obtained all attendance certificates;
- **Repeating:** students re-enrolling in the same year of a programme again. Starting from academic year 2009-2010, students who have not fulfilled the assigned additional learning requirements within the deadline have to enrol in the 1st year as repeating students.

### Entrance exam

Enrolment in a study programme may be free access or restricted access.

For all programmes with restricted access, candidates are required to sit an entrance exam and there are a limited number of places available. The entrance exam is a test which is used to draw up a graded list of candidates; students may enrol in the programme according to their place in the list. The methods of managing the call for applications and the list of candidates, including the methods for filling any unclaimed places, may vary from year to year. The test may be specific to a Degree Programme or may be part of a single exam covering several programmes from the same university or from other universities (during the registration the students should indicate their first choice).

The following definitions apply:

**Available places** = the number of places laid down in the call for applications to the Study Programme, or determined by subsequent legal provisions; these exclude any additional places reserved according to special provisions of the programme (e.g. for international study programmes, they do not include places for foreign students selected from other universities; for all programmes with restricted access regulated nationally, these do not include the places reserved for transferring students).

**Number of candidates for the exam** = number of students registered for the exam indicating the study programme as their first choice;

**Number of participants in the exam** = number of students participating in the exam indicating the study programme as their first choice;

**Number of participants in the exam for every available place** = number of students participating in the exam who indicated the study programme as their first choice as a ratio of the number of places available on the programme.

#### First year enrolments

This includes all students enrolled in the first year, including those joining the study programme in its first year through transferrals, as well as those enrolled in the first year but not for the first time (e.g. repeating students).

#### New Careers

Students who start a new university career (excluding transfers) from year one in a second cycle programme.

#### Passages and transfers

**Passage:** when a student applies to move to a different study programme from the one enrolled in the previous year, within the same university.

**Transfer:** when a student transfers from a study programme in one university to any programme in another university.

#### Registered students

Students who begin a career in the Italian University System for the first time and who enrol in the first year (i.e. for whom no previous university careers are recorded) of a First Cycle (L509, L) or Single Cycle programme (LSCU, LMCU)

#### Statistical Observatory of the University of Bologna

The Statistical Observatory was founded in 1997 in order to “provide the university governing bodies with a reliable and timely documentary and monitoring database aiming to promote decision-making processes and planning, particularly of learning activities and other services targeting the student population” (art.1 of the Founding and Operational Regulation). Following the disabling of the Statistical Observatory, as resolved by the Board of Governors on 14 December 2010, from the second semester of academic year 2010-11 the survey and subsequently analysis of the attending students opinion is cared for the University of Bologna by Academic Affairs Division - Quality Assurance Department and Control and Finance Division - Support Planning and Evaluation Department. The overall results and the methods of collection and analysis are described in the document published online on the [Statistical Observatory of the University of Bologna](#).

#### University DataWarehouse

In information service for the managers of the University of Bologna organisational departments which gathers, integrates and reorganises data from various sources and makes it available for analysis and evaluation for the purposes of planning and decision-making.

#### Withdrawal

Suspension of studies by students who do not register in the next academic year, or who drop out from the degree programme.