



Internet access system through the Wireless Network of the University of Bologna

Printable service summary document: the updated version is available online at the following address <http://www.unibo.it/almawifi>

A WPA security access system has been implemented on every access point according to the requirements of WI-FI Alliance, which guarantees complete encryption of all the traffic flows. In more detail, the WPA system has been configured with TKIP and EAP (IEEE 802.1x) standards, where active directory users of the University DSA are validated by a centralized Radius Server.

We remind you that user credentials should be activated by setting a personal password via the following website <https://www.dsa.unibo.it>

For further information about connection problem please consult FAQ ALMAWIFI at <http://www.unibo.it/almawifi>

Configuration client for Symbian S60 3rd edition

The OS in consideration is Symbian S60 3rd edition for Nokia E65.
Some considerations:

- It is not necessary to import certificate
- in case of account name.surname2 it is necessary to specify this account and not the alias (es. name.surname)

Configuration Nokia E65

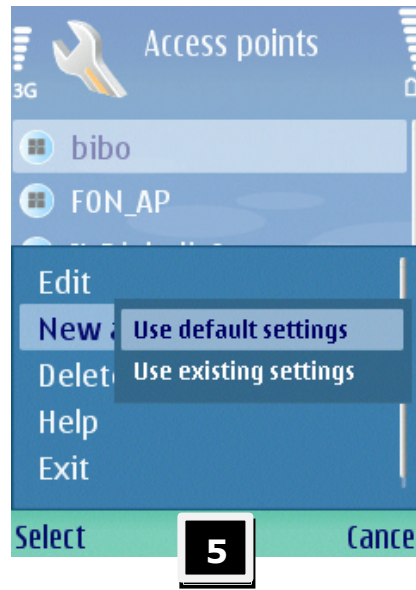
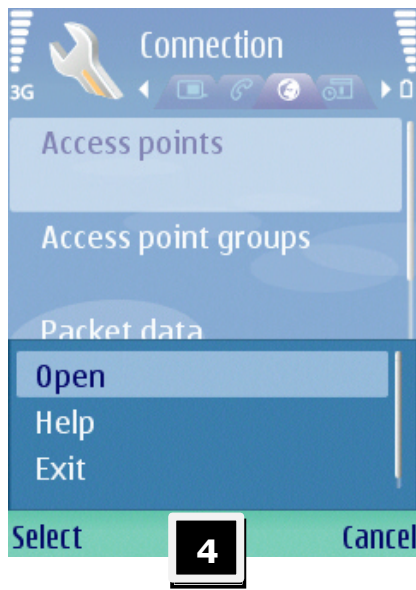
Create a "Access points" to the net ALMAWIFI.

Menu ? Tools ? Settings ? Connection



Wireless Netw ALMAWIFI

Access points ? Options ? Open ? New Access point ? Use default settings



Connection name: ALMAWIFI

Data bearer: Wireless LAN

WLAN netw. name: ALMAWIFI

Network status: Public

WLAN netw. mode: Infrastructure

WLAN security mode: WPA/WPA2

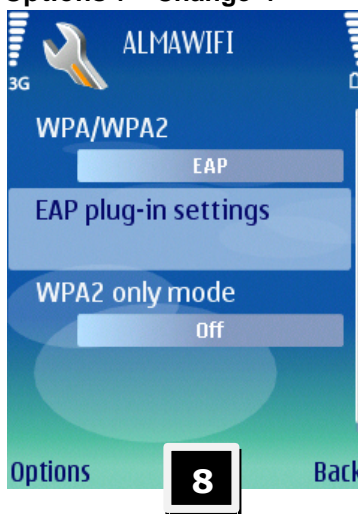


In:

WLAN security sett. ? Options ? Change ?

WPA/WPA2: EAP

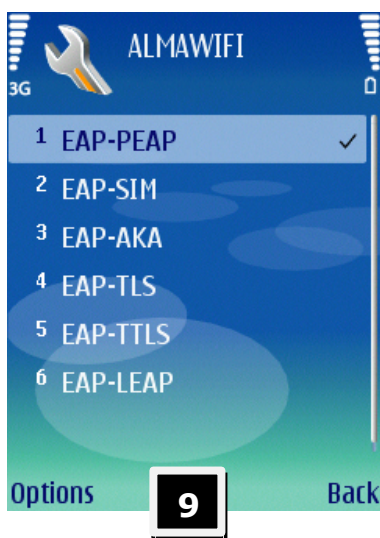
WPA2 only mode: off



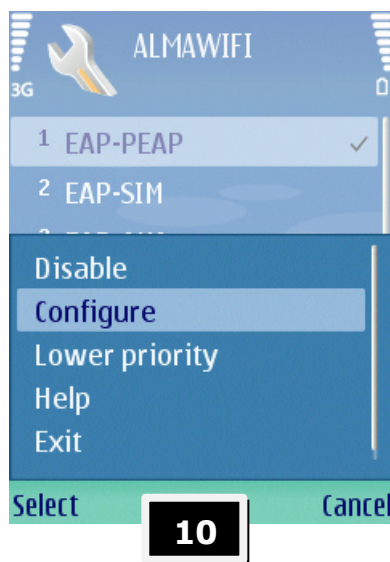
Wireless Network – ALMAWIFI

EAP plug-in settings ? Options ? Change ?

- activate **EAP-PEAP** and move it on top of the list
- disable the other encryptions voices



Select **Options** ? **Configure**



In the tab "**General**" complete the fields with:

User certificate: (not defined)

CA certificate: Thawte Premium Server

User name in use: User-configured

***User name:** personale\name.surname

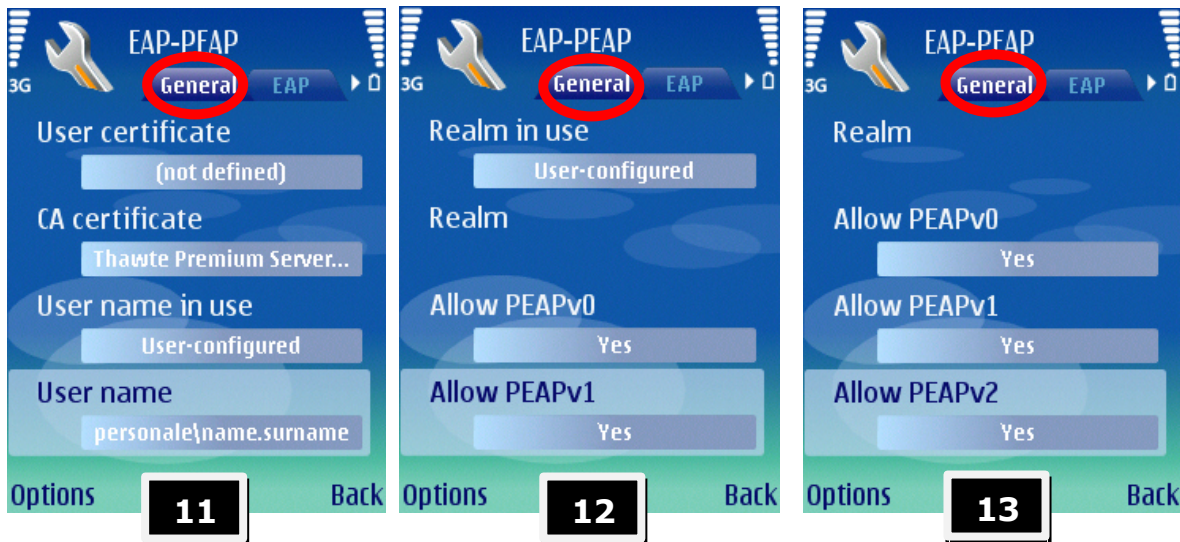
Realm in use: User-configured

Realm: (empty field)

Allow PEAPv0: Yes

Allow PEAPv1: Yes

Allow PEAPv2: Yes



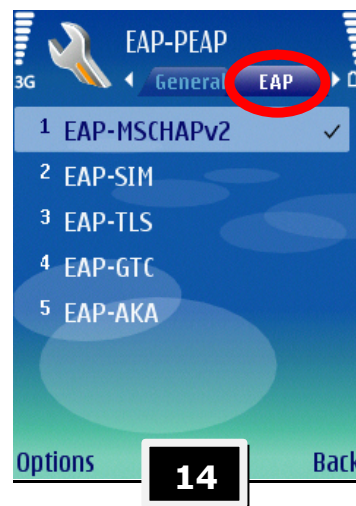
***Attention:** if the “User name” of DSA contains a final number (es. name.surname2), it is necessary to specify it in order to complete the access profile.

personale\name.surname ? for staff of University of Bologna

studenti\name.surname ? for students of University of Bologna

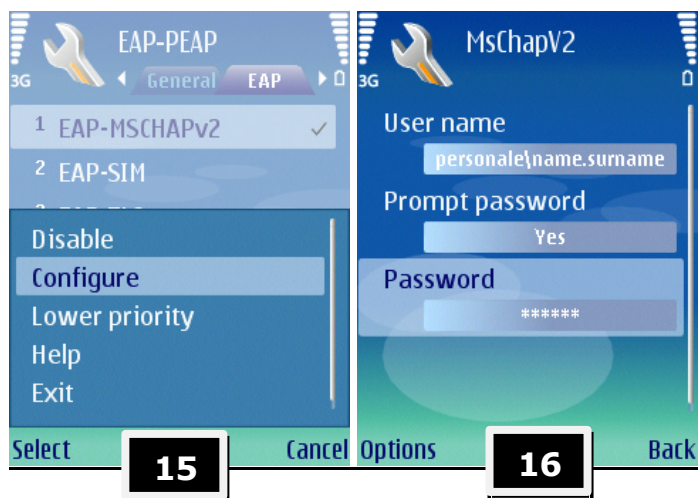
Configure the tab **EAP** (menu up):

- active **EAP-MSCHAPv2** and move it on top of the list
- disable the other encryptions voices



Select **Options ? Configure**

- Write the **User Name** of DSA
- **Prompt password:** Yes
- Insert **Password**



Wireless Network – ALMAWIFI

4

Select **Back** until the desktop of the mobile phone

**Activate WLAN scansion ? ALMAWIFI ? Start Web browsing ? Insert URL ? Click on Go to ?
Insert your password**

